

U.S. PUBLIC LAND SURVEY MONUMENT RECORD

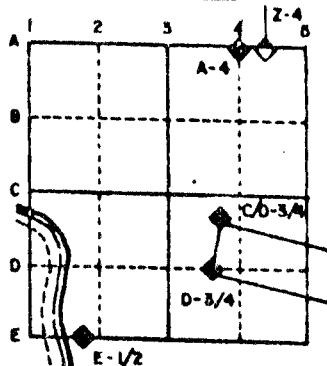
For Public Land Survey Corners in the
T. 1 N., R. 11 E.

CORNER CODE INDEX

	1	2	3	4	5	6	7	8	9	10	11	12	13	14	15	16	17	18	19	20	21	22	23	24	25
A																									
B																									
C	6																								
D		5																							
E			4																						
F				3																					
G					2																				
H																									
I																									
J																									
K																									
L																									
M																									
N																									
O																									
P																									
Q																									
R																									
S																									
T																									
U																									
V																									
W																									
X																									
Y																									
Z																									

PLACE MONUMENT SYMBOL (◆) AT PROPER LOCATION ON ABOVE INDEX

EXAMPLE



NEWARK TWP
ROCK COUNTY WI

IF AVAILABLE
STATE PLANE COORDINATES

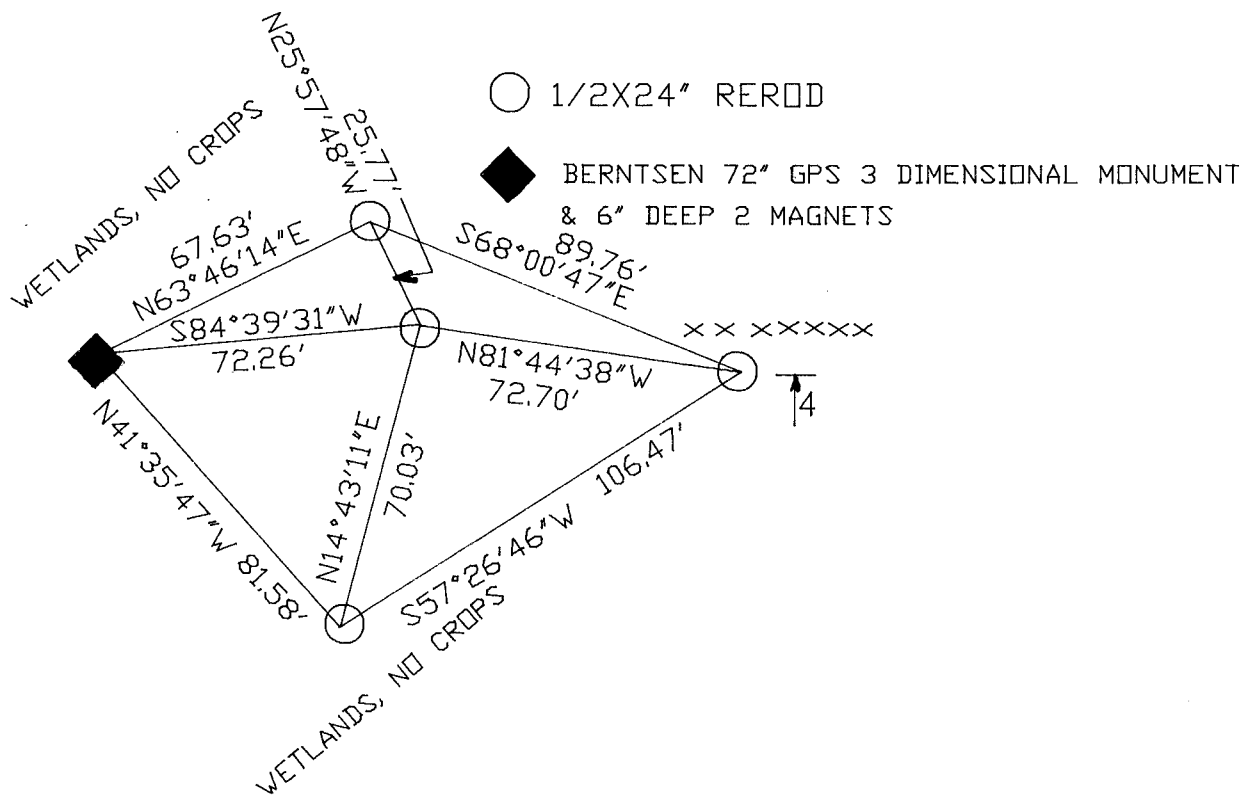
North (Y) _____ Eleve. (Z) _____
 East (X) _____ Zone _____
 Hor. Datum _____ Vert. Datum _____

(c)

◆ CORNER MONUMENT

○ WITNESS MONUMENT

BEARINGS ARE BASED ON: STATE PLANE
1927 DATUM



F.B #2
PAGE 1, 2

SHEET ___ OF ___

CORNER CODE: L9

(B) Describe any record evidence, monument evidence, occupational evidence, testimonial evidence or any other material evidence you considered, and whether the monument was found or placed.

1871 COLLINS. HIS FIELD NOTES STATE "SET 1/4 STONE IN MARSH IN LINE WITH FENCES EAST AND WEST AND ON WEST SIDE OF NORTH AND SOUTH DITCH." SHOWS A DISTANCE OF 2638.68 TO THE SOUTHEAST AND 2655.18 TO THE NORTHEAST CORNERS OF SECTION 17.

BATTERMAN FOUND THE STONE BROKEN AND FOUND THE BOTTOM HALF. USED TO SUBDIVIDE SECTION 16.

FOUND BROKEN STONE AND WOOD HUB. THIS IS IN HARMONY WITH THE EAST/WEST CENTER LINE OF SECTION 16 THAT BATTERMAN ESTABLISHED. IT IS ALSO IN HARMONY WITH COLLINS DISTANCE TO THE SOUTHWEST AND NORTHWEST CORNERS OF SECTION 16. PLACED BERNTSEN 72" GPS 3 DIMENSIONAL MONUMENT WITH DRILL HOLE IN TOP. PLACED 2 MAGNETS AT A DEPTH OF 6 INCHES. PLACED YELLOW CARSONITE NEXT TO MONUMENT.

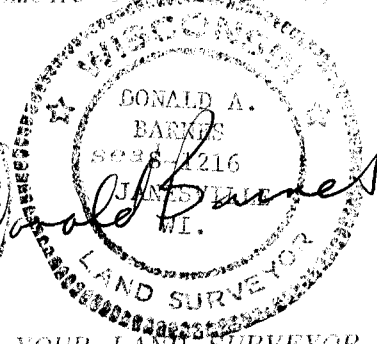
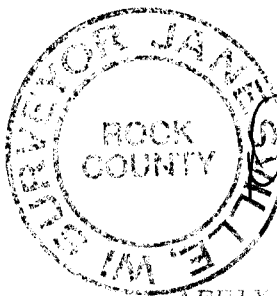
(C) Was the corner restored through acceptance of (1) an obliterated evidence location, or, (2) a found perpetuated location?

ACCEPTED FOUND PERPETUATED LOCATION.

(D) Describe any material discrepancy between the location of the corner as restored or reestablished and the location of that corner as previously restored or reestablished by distance and direction. Show the discrepancy on the plan view drawing under (a), above. Show the distances between the corner as previously restored or reestablished and (1) the corner as restored or reestablished, and (2) to at least 4 of the witness monuments shown on the drawing in (a), above.

(E) Was the corner reestablished through lost corner proportionate methods? If so, show the method, including the directions and distances to other public land survey corners used as evidence or used for proportioning the corner location.

I, Donald Barnes, hereby certify that the corner points as identified by the corner code index were, in a field survey on, OCTOBER 11, 1989, established, re-established, monumented, re-monumented, recovered or restored as expressed below and in conformance with the regulations and rules as required in the current manual of survey instructions of the United States Department of Interior, Bureau of Land Management.



COUNTY SURVEYOR FILING DATA

Date of computer entry _____

Date microfilmed _____

Number of included sheets _____
CORNER CODE

AFFIX YOUR LAND SURVEYOR SEAL