

# U.S. PUBLIC LAND SURVEY MONUMENT RECORD

For Public Land Survey Corners in:

WI ADMINISTRATIVE CODE A-E 7.08 REQUIREMENT

T. 1N., R. 11E

CORNER CODE INDEX

NEWARK TWP

ROCK COUNTY WI

IF AVAILABLE  
ROCK COUNTY COORDINATES PREFERRED

A	1	2	3	4	5	6	7	8	9	10	11	12	13	14	15	16	17	18	19	20	21	22	23	24	25
B																									
C	6																								
D		5																							
E																									
F																									
G	1																								
H		8																							
I																									
J																									
K	18																								
L		17																							
M																									
N																									
O																									
P	19																								
Q		20																							
R																									
S																									
T	30																								
U		29																							
V																									
W																									
X	31																								
Y		32																							
Z																									

PLACE MONUMENT SYMBOL  AT PROPER LOCATION ON ABOVE INDEX

North \_\_\_\_\_ Elev. \_\_\_\_\_

East \_\_\_\_\_

Hor. Datum \_\_\_\_\_ Vert. Datum \_\_\_\_\_

LATITUDE \_\_\_\_\_ ELLIPS. HT. \_\_\_\_\_

LONGITUDE \_\_\_\_\_

GPS (X) \_\_\_\_\_ TRAVERSE (X) \_\_\_\_\_

BASED ON THE FOLLOWING CONTROL:

CORNER MONUMENT

WITNESS MONUMENT

(a)

BEARINGS ARE BASED ON: \_\_\_\_\_

FIELD BOOK \_\_\_\_\_ PAGE # \_\_\_\_\_

SHEET 1 OF 3

SHOW A PLAN VIEW DRAWING DEPICTING THE CORNER MONUMENT AND SURROUNDING PHYSICAL FEATURES, INCLUDING THE EXCAVATION AREA AND DEPTH.

PLANNING & ZONING COMMITTEE ADOPTED THE ABOVE FORM ON 12/2/1982

CORNER CODE J-1

NE541

(B) Describe any record evidence, monument evidence, occupational evidence, testimonial evidence or any other material evidence you considered, and whether the monument was found or placed.

- 1833 MULLETT SEP 4 NORTH ON EAST SIDE SECTION 13  
2640 SET QUARTER SECTION POST BUR OAK 18 S35W 104.28'; BUR OAK 6 N13W 40.92'  
3201 ENTER MARSH  
5280 SET POST CORNER SECTION 12 & 13 MADE A MOUND OF EARTH AND SODS FIRST 1/2 LAND ROLLING SECOND RATE THICKLY TIMBERED WITH BLACK WHITE AND BUR OAK LAST 1/2 LEVEL WET MARSH.  
NORTH ON EAST SIDE SECTION 12  
1254 LEAVE MARSH  
2640 SET QUARTER SECTION POST BUR OAK 18 N75W 49.5'; BLACK OAK 8 N73E 38.28'  
2904 ENTER MARSH  
3696 LEAVE MARSH  
5280 SET POST CORNER SECTIONS 1 & 12. BLACK OAK 10 N47W 19.8'; BLACK OAK 10 S42W 58.74'. EXCEPT MARSH LAND ROLLING SECOND RATE TIMBER WHITE BLACK AND BUR OAK
- 1834 MILLER MARCH WEST RANDOM BETWEEN SEC 7 & 18  
3762 ENTER MARSH CR SOUTH  
5341.38 INTERSECTED RANGE LINE 2.64' NORTH OF POST. LAND SAME TO MARSH WHICH IS 3RD RATE  
EAST MARKED BACK  
2701.38 SET 1/4 SEC POST. BUR OAK 14 IN N81E 132'; BUR OAK 20 S82W 75.9'  
3131.7 YELLOW OAK 12 IN DIAMETER  
4385.7 BUR OAK 15 IN DIAMETER  
5341.38 SEC. COR. MARCH 12, 1834
- 1834 HARRISON JANY EAST ON RANDOM BETWEEN SECS 12 & 13  
2640 TEMPY 1/4 P & ENTER MARSH  
5306.4 INT EAST BDY 13.2' SOUTH OF POST LAND 1ST 1/2 LEVEL 2ND RATE. TIMBER BURR O 2ND 1/2 LEVEL & WET 3RD RATE  
WEST COR BET 12 & 13  
2653.2 QUARTER SEC COR. BUR OAK 12 N49E 59.4'; BUR OAK 12 N80W 231' BUR OAK 12 MARKED BUR OAK 12 MARKED  
5306.4 SEC COR
- 1871 COLLINS NORTH ON WEST LINE OF 7 VARIATION 6  
2664.42 SET 1/4 STONE BY ROOTS OF WITNESS TREES.  
CONTINUED NORTH VARIATION 6-30  
5333.46 SET STONE FOR CORNER OF 6 & 7 BY WITNESS TREE AND STUMP.  
NORTH ON WEST LINE OF SEC 18 VARIATION 6-30  
2658.48 INTERSECT 1/4 LINE 7.26' EAST OF CORNER. SET 1/4 STONE IN PLACE OF STONE SET BY RUGER AGREEING WITH STUMPS OF WITNESS TREES. CORRECTED VARIATION 6-20  
CONTINUED NORTH VARIATION 5-45  
5330.82 SET STONE IN MARSH FOR CORNER OF 7 & 18 IN PLACE OF STAKE AND STONES IN MOUND.  
EAST BETWEEN 7 & 18 VAR 4-45  
2735.7 SET 1/4 STONE BY LINE TREE AND ROOTS OF WITNESS TREES.  
CONTINUED EAST SAME VARIATION  
5429.16 SECTION CORNER
- 1871 RUGER VOL 2 PG 65 CORNER IN MARSH. LOST ESTABLISHED IT FROM NEAREST KNOWN CORNERS OF U.S. SURVEY. DROVE STAKE DEEP AND PUT ON TOP OF IT LIMESTONE 12X7X5. VAR 6-39 2668.05 TO E 1/4 COR SEC 12 (AVON), VAR 6-14 2702.7, S 1/4 COR SEC 12 (AVON), S 1/4 COR SEC 12 TO SW COR SEC 12 VAR 6-14 2665.74, & AT S 1/4 COR SEC 12 FD STAKE.
- 1974 LEE VOL 5 PG 52 SEARCH FD NOTHING.

PAGE 1 OF 3

J-1

Donald Barnes  
6-21-01

DUG LARGE HOLE & DID NOT FIND LIMESTONE. FOUND OLD BARB WIRE FENCE.

*C) Was the corner restored through acceptance of (1) an obliterated evidence location, or, (2) a found perpetuated location?*

**CORNER WAS RESTORED THROUGH ACCEPTANCE OF OBLITERATED EVIDENCE LOCATION. COLLIN'S PRORATION WAS IN HARMONY WITH OCCUPATION.**

*D) Describe any material discrepancy between the location of the corner as restored or reestablished and the location of that corner as previously restored or reestablished by distance and direction. Show the discrepancy on the plan view drawing under (a), above. Show the distances between the corner as previously restored or reestablished and (1) the corner as restored or reestablished, and (2) to at least 4 of the witness monuments shown on the drawing in (a), above.*

*(E) Was the corner reestablished through lost corner proportionate methods? If so, show the method, including the directions and distances to other public land survey corners used as evidence or used for proportioning the corner location.*

I, Donald Barnes, hereby certify that the corner location as identified by the corner code index was determined by me under my direction and control and that this U.S. Public Land Survey Monument Record is correct and complete to the best of my knowledge and belief.

seal



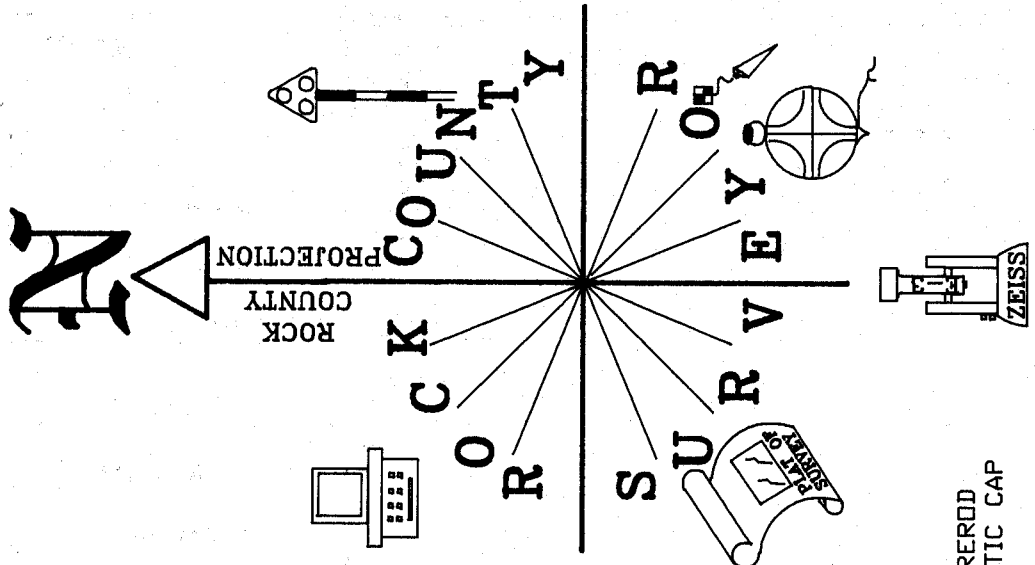
SHEET 2 OF 3

emboss

6-21-01

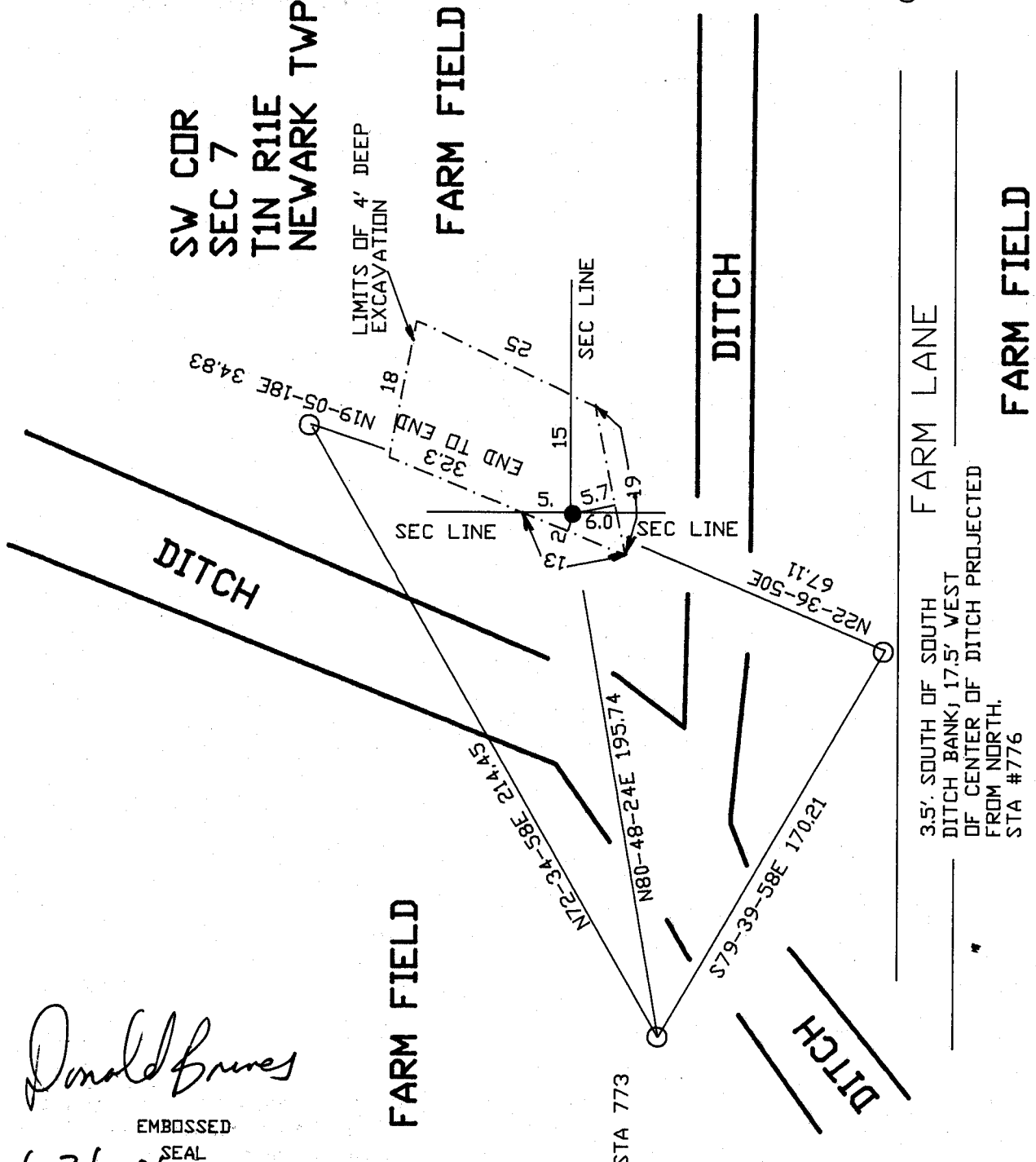
CORNER CODE **J-1**

A-E 7.08 REQUIREMENT



SW COR  
SEC 7  
T1N R11E  
NEWARK TWP

FARM FIELD



○ 3/4X24 REROD WITH PLASTIC CAP

FARM LANE

FARM FIELD

3.5' SOUTH OF SOUTH DITCH BANK, 17.5' WEST OF CENTER OF DITCH PROJECTED FROM NORTH.  
STA #776

*Donald Brunes*

EMBOSSED SEAL

6-21-01

11