

U.S. PUBLIC LAND SURVEY MONUMENT RECORD

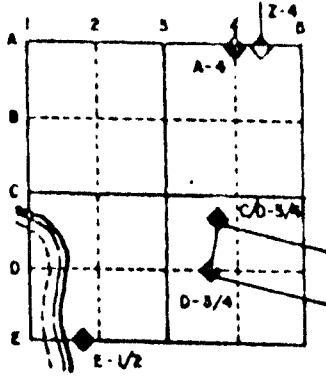
For Public Land Survey Corners in the
T. 1 N., R. 11 E.

CORNER CODE INDEX

	1	2	3	4	5	6	7	8	9	10	11	12	13	14	15	16	17	18	19	20	21	22	23	24	25
A																									
B																									
C	6	5	4	3	2																				
D																									
E																									
F																									
G	7	8	9	10	11	12																			
H																									
I																									
J																									
K	18	17	16	15	14	13																			
L																									
M																									
N																									
O																									
P	19	20	21	22	23	24																			
Q																									
R																									
S																									
T	30	29	28	27	26	25																			
U																									
V																									
W																									
X																									
Y	31	32	33	34	35	36																			
Z																									

PLACE MONUMENT SYMBOL (◆) AT PROPER LOCATION ON ABOVE INDEX

EXAMPLE



NEWARK TWP
ROCK COUNTY WI

IF AVAILABLE
STATE PLANE COORDINATES

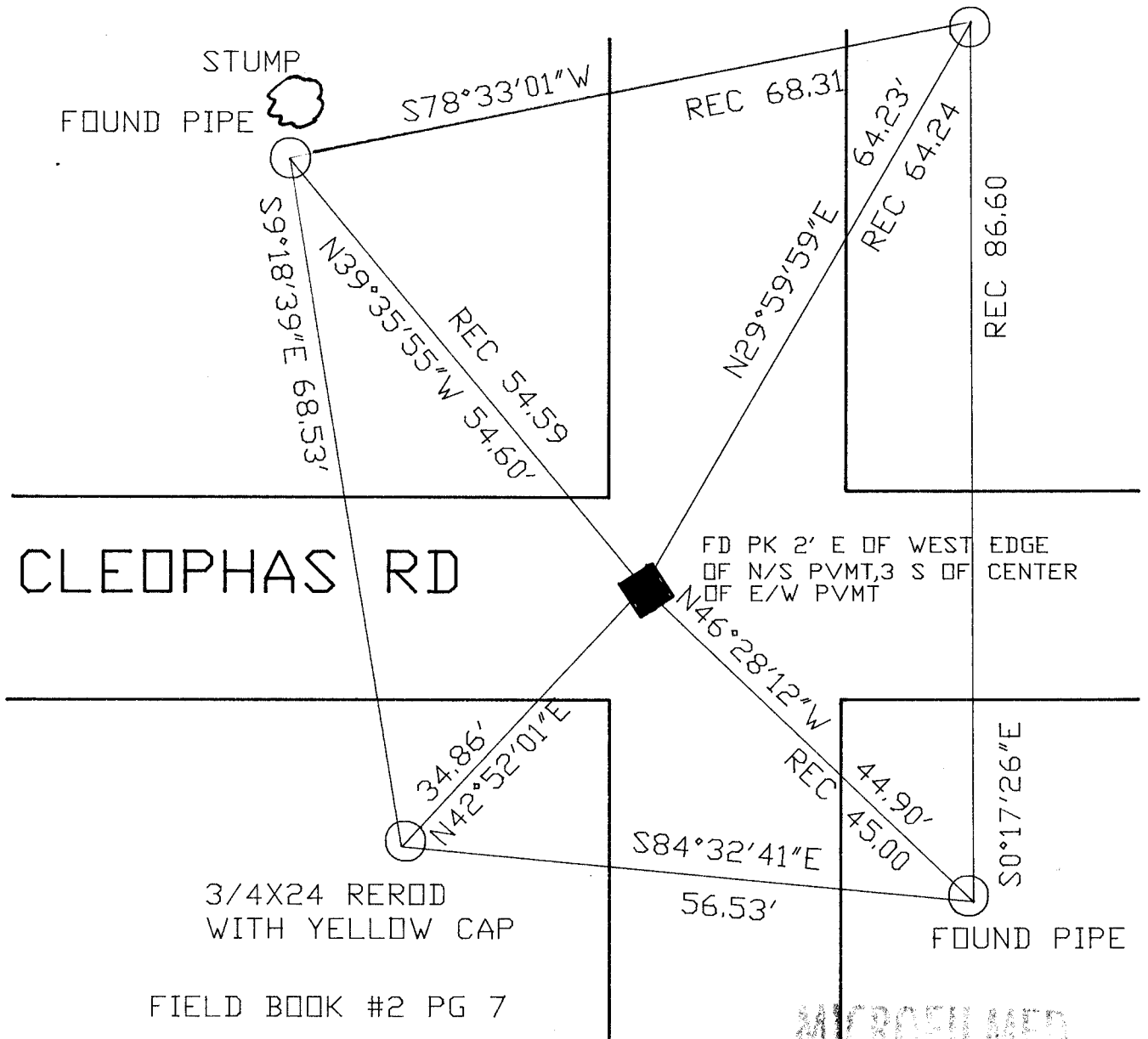
North (Y) _____ Eleve. (Z) _____
 East (X) _____ Zone _____
 Hor. Datum _____ Vert. Datum _____

◆ CORNER MONUMENT

○ WITNESS MONUMENT

C.T.H. "H" FOUND PIPE

BEARINGS ARE BASED ON: **ASSUMED**



SHEET _____ OF _____

CORNER CODE: **J 17**

(B) Describe any record evidence, monument evidence, occupational evidence, testimonial evidence or any other material evidence you considered, and whether the monument was found or placed.
SEE SKETCH.

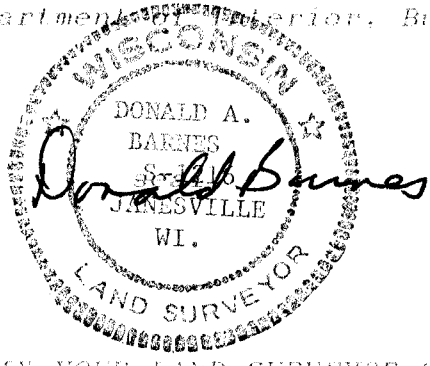
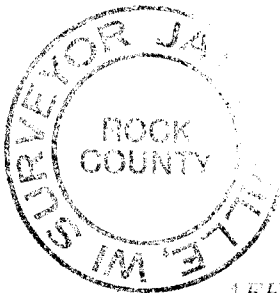
(C) Was the corner restored through acceptance of (1) an obliterated evidence location, or, (2) a found perpetuated location?

ROAD PAVING PROJECT WILL INVOLVE THIS CORNER. DID NOT ACCEPT NOR REJECT MONUMENT. REFERENCED FOUND MONUMENT SO IT WOULD NOT BE DESTROYED BY THE PAVING PROJECT.

(D) Describe any material discrepancy between the location of the corner as restored or reestablished and the location of that corner as previously restored or reestablished by distance and direction. Show the discrepancy on the plan view drawing under (a), above. Show the distances between the corner as previously restored or reestablished and (1) the corner as restored or reestablished, and (2) to at least 4 of the witness monuments shown on the drawing in (a), above.

(E) Was the corner reestablished through lost corner proportionate methods? If so, show the method, including the directions and distances to other public land survey corners used as evidence or used for proportioning the corner location.

I, Donald Barnes, hereby certify that the corner points as identified by the corner code index were, in a field survey on, AUGUST 1 1991, established, re-established, monumented, re-monumented, recovered or restored as expressed below and in conformance with the regulations and rules as required in the current manual of survey instructions of the United States Department of the Interior, Bureau of Land Management.



AFFIX YOUR LAND SURVEYOR SEAL

COUNTY SURVEYOR FILING DATA

Date of computer entry _____

Date microfilmed _____

Number of included sheets _____
CORNER CODE

J17