

# U.S. PUBLIC LAND SURVEY MONUMENT RECORD

For Public Land Survey Corners in:

WI ADMINISTRATIVE CODE A-E 7.08 REQUIREMENT

T. 1 N., R. 11 E

### CORNER CODE INDEX

A	1	2	3	4	5	6	7	8	9	10	11	12	13	14	15	16	17	18	19	20	21	22	23	24	25
B																									
C	6																								
D																									
E																									
F																									
G	7																								
H																									
I																									
J																									
K																									
L	18																								
M																									
N																									
O																									
P	19																								
Q																									
R																									
S																									
T	20																								
U																									
V																									
W																									
X	21																								
Y																									
Z																									

NEWARK TWP

ROCK COUNTY WI

IF AVAILABLE  
ROCK COUNTY COORDINATES PREFERRED

North \_\_\_\_\_ Elev. \_\_\_\_\_

East \_\_\_\_\_

Hor. Datum \_\_\_\_\_ Vert. Datum \_\_\_\_\_

LATITUDE \_\_\_\_\_ ELLIPS. HT. \_\_\_\_\_

LONGITUDE \_\_\_\_\_

GPS (X) \_\_\_\_\_ TRAVERSE (X) \_\_\_\_\_

BASED ON THE FOLLOWING CONTROL:

PLACE MONUMENT SYMBOL  AT PROPER LOCATION ON ABOVE INDEX

CORNER MONUMENT

WITNESS MONUMENT

(a)

BEARINGS ARE BASED ON:

FIELD BOOK \_\_\_\_\_ PAGE # \_\_\_\_\_

SHEET 1 OF 3

SHOW A PLAN VIEW DRAWING DEPICTING THE CORNER MONUMENT AND SURROUNDING PHYSICAL FEATURES, INCLUDING THE EXCAVATION AREA AND DEPTH.

PLANNING & ZONING COMMITTEE ADOPTED THE ABOVE FORM ON 12/2/1982

CORNER CODE E9

NE525

(B) Describe any record evidence, monument evidence, occupational evidence, testimonial evidence or any other material evidence you considered, and whether the monument was found or placed.

1834 MILLER PG 37 EAST RANDOM BETWEEN SECS 5 & 8

2046 ENTER MARSH  
2508 LEAVE MARSH  
2970 CREEK BOTTOM  
3960 CREEK 5.28' SW  
4884 LEAVE CREEK BOTTOM  
5267.46 INTERSECTED SEC LINE 7.92' SOUTH POST  
WEST CORRECTED BETWEEN SEC 5 & 8  
2537.7 HICKORY 12 IN DIAMETER  
2634.06 SET 1/4 SEC. POST HICKORY 10 S70W 54.78'; BUR OAK N82E 51.48'  
3729.66 HICKORY 12 IN DIAMETER  
5267.46 SEC COR.

PG 30 NORTH BETWEEN SEC 4 & 5

264 ENTER CREEK BOTTOM  
1683 BROOK 6.6' S,W, BOTTOM MARSH  
1980 LEAVE SAME (BOTTOM)  
2640 SET 1/4 SEC POST. BUR OAK 14 IN S4E 54.78'; BUR OAK 12 IN N49W  
58.08'  
2818.2 BUR OAK 14 IN DIAMETER  
3630 ENTER PRAIRIE  
3729 BROOK 3.3' S.E.  
5267.46 INTERSECT NORTH BOUNDARY 36.96' EAST OF POST SET POST IN  
MOUND OF EARTH AND SOD COR OF SEC 4 & 5. LAND ROLLING 2ND  
RATE OAK & HICKORY TIMBER. OAK & HAZEL UNDERGROWTH  
MARCH 11, 1834

PG 29 EAST RANDOM BETWEEN SECS 4 & 9

5016 ENTER PRAIRIE  
5256.9 INTERSECT SEC LINE 6.6' SOUTH POST  
LAND GENTLY ROLLING 2ND RATE TIMBER OAK & HICKORY, OAK &  
HAZEL UNDERGROWTH. PRAIRIE GRASS 2ND RATE  
WEST CORRECTED BETWEEN SEC 4 & 9

\*  
2628.12 SET 1/4 SEC POST. WHITE OAK 4 IN S82E 9.9'; HICKORY N55W 89.1'  
3785.1 HICKORY 12 IN DIA  
4872.78 WHITE OAK 15 IN DIAMETER.  
\*2491.5 BUR OAK 16 IN DIA. (BOTTOM OF PAGE)

PG 29 NORTH BETWEEN 8 & 9

1320 LEAVE MARSH  
1749 BUR OAK 16 IN DIAMETER  
2600.4 BUR OAK 12 IN DIAMETER  
2640 SET 1/4 SEC POST. BUR OAK 14 N31W 24.42'  
BUR OAK 14 S15E 28.38'  
3876.84 HICKORY 12 IN DIAMETER  
4676.1 WHITE OAK 20 IN DIAMETER  
5045.04 BUR OAK 12" IN DIAMETER  
5280 SET POST COR OF SEC 4,5,8,9  
BUR OAK 12 S32E 11.88'; BUR OAK 12 N25W 85.8' LAND SLIGHTLY  
ROLLING 2ND RATE TIMBER OAK & HICKORY

1871 COLLINS REMONUMENTATION

PG 196 EAST BETWEEN 5 & 8 VARIATION 6-30

2641.32 SET 1/4 STONE BY WITNESS TREES  
CONTINUED EAST VARIATION 6

3986.4 CREEK  
5336.76 INTERSECT SECTION LINE 3.96' SOUTH OF CORNER. CORRECTED  
VARIATION 6-05

PG 197 NORTH BETWEEN 4 & 5 VARIATION 6-30

2570.04 SET STONE FOR 1/4 COR BY STUMPS OF WITNESS TREES SOUTH VARIATION OF NEEDLE REVERSED.

CONTINUED NORTH VARIATION 7-3

5109.72 SET STONE FOR CORNER OF 4 & 5 36.96' EAST OF PLYMOUTH CORNER NOV 2 1871

PG 184 EAST BETWEEN 4 & 9 VARIATION 5-45

2643.96 INTERSECT 1/4 LINE 19.8' NORTH OF CORNER. SET 1/4 STONE BY WITNESS TREE IN PLACE OF OLD STAKE. CORRECTED VARIATION 6-12

CONTINUED EAST VARIATION 5

5293.86 SECTION CORNER OCT 28, 1871

PG 183 NORTH BETWEEN 8 & 9 VARIATION 6

2652.54 INTERSECT 1/4 LINE 21.12' EAST OF CORNER. SET 1/4 STONE BY WITNESS TREE AND STUMP CORRECTED VARIATION 5-32

CONTINUED NORTH VARIATION 5-50

5308.38 INTERSECT SECTION LINE 6.6' EAST OF CORNER. SET STONE FOR CORNER OF 4,5,8,9 IN PLACE OF STAKE AGREEING WITH STUMPS OF WITNESS TREES. CORRECTED VARIATION 5-41

1878 RUGER VOL 2 PG 244 STONE MON VAR 5-40 2633.4' TO E 1/4 COR SEC 5 & VAR 5-51 2694.12' TO S 1/4 COR SEC 5.

1961 BATTERMAN VOL 4 PG 76 FD CUT STONE MON. REFERENCED SAME. BARNES IN 1975 ADDED DIFFERENT DRAWING FROM BELOIT RECORDS.

1975 BICKEL #3130 2701.04' TO S 1/4 COR SEC 5 & 2573.55' TO E 1/4 COR SEC 5.

FD NAIL IN HOLE & 3 REFERENCE PIPES. COMPUTED DISTANCE TO S 1/4 COR SEC 5 IS WITHIN .01' OF BICKEL'S DISTANCE & COMPUTED DISTANCE TO FD R/R NEAR E 1/4 COR SEC 5 IS WITHIN .15' OF BICKEL'S DISTANCE.

C) Was the corner restored through acceptance of (1) an obliterated evidence location, or, (2) a found perpetuated location?

ACCEPTED FOUND PERPETUATED LOCATION.

D) Describe any material discrepancy between the location of the corner as restored or reestablished and the location of that corner as previously restored or reestablished by distance and direction. Show the discrepancy on the plan view drawing under (a), above. Show the distances between the corner as previously restored or reestablished and (1) the corner as restored or reestablished, and (2) to at least 4 of the witness monuments shown on the drawing in (a), above.

(E) Was the corner reestablished through lost corner proportionate methods? If so, show the method, including the directions and distances to other public land survey corners used as evidence or used for proportioning the corner location.

I, Donald Barnes, hereby certify that the corner location as identified by the corner code index was determined by me under my direction and control and that this U.S. Public Land Survey Monument Record is correct and complete to the best of my knowledge and belief.

seal

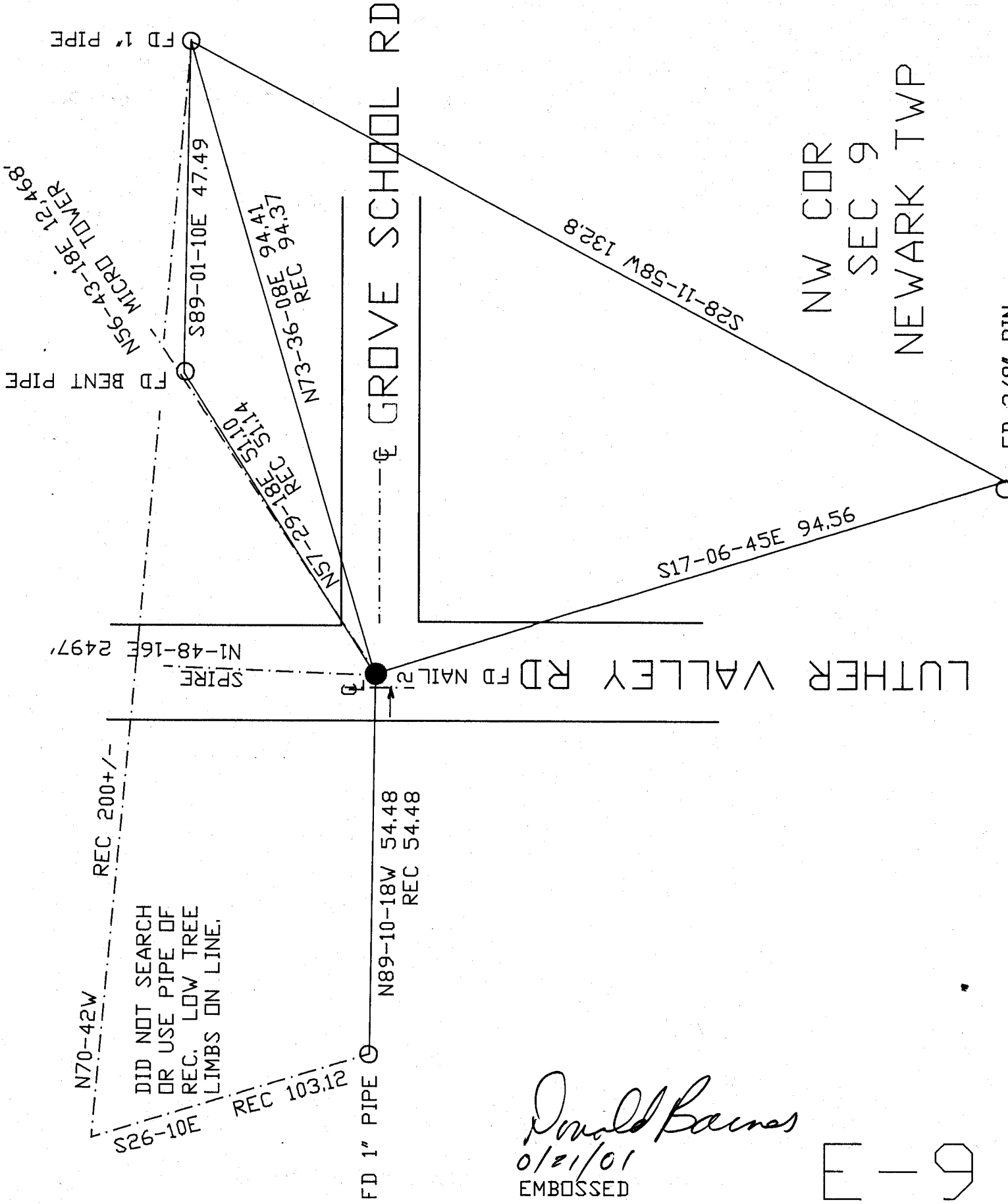
*Donald Barnes*

emboss

01/21/01

SHEET 2 OF 3

CORNER CODE **E-9**



NS6-43-18E 12.468'  
MICRO TOWER

FD BENT PIPE

N1-48-16E 2497'  
SPIRE

N70-42W  
REC 200+/-

DID NOT SEARCH  
OR USE PIPE OF  
REC. LOW TREE  
LIMBS ON LINE.

S26-10E  
REC 103.12

S89-01-10E 47.49

NS7-29-18E 51.14  
REC 51.14

N73-36-08E 94.41  
REC 94.37

N89-10-18W 54.48  
REC 54.48

FD 1" PIPE

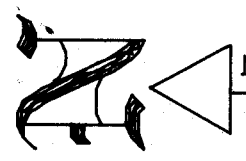
GROVE SCHOOL RD

S28-11-58W 132.8

S17-06-45E 94.56

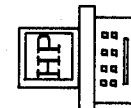
NW COR  
SEC 9  
NEWARK TWP

FD 3/8" PIN  
LAYING DOWN

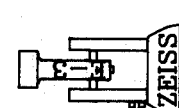
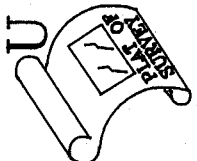


ROCK COUNTY

COUNTY



ROCK COUNTY SURVEY



OBSERVATION SHEET #525

NW COR SEC 9  
FD NAIL

OLD TIES VOL 4 PG 76

Donald Barnes  
01/21/01  
EMBOSSSED  
SEAL

