

U.S. PUBLIC LAND SURVEY MONUMENT RECORD

For Public Land Survey Corners in:

WI ADMINISTRATIVE CODE A-E 7.08 REQUIREMENT

T. 1 N., R. 11 E

CORNER CODE INDEX

A	2	3	4	5	6	7	8	9	10	11	12	13	14	15	16	17	18	19	20	21	22	23	24	25
B	6																							
C																								
D																								
E																								
F																								
G	1																							
H																								
I																								
J																								
K																								
L	18																							
M																								
N																								
O																								
P																								
Q	19																							
R																								
S																								
T																								
U																								
V																								
W																								
X	31																							
Y																								
Z																								

NEWARK TWP

ROCK COUNTY WI

IF AVAILABLE
ROCK COUNTY COORDINATES PERFERRED

North _____ Elev. _____

East _____

Hor. Datum _____ Vert. Datum _____

LATITUDE _____ ELLIPS. HT. _____

LONGITUDE _____

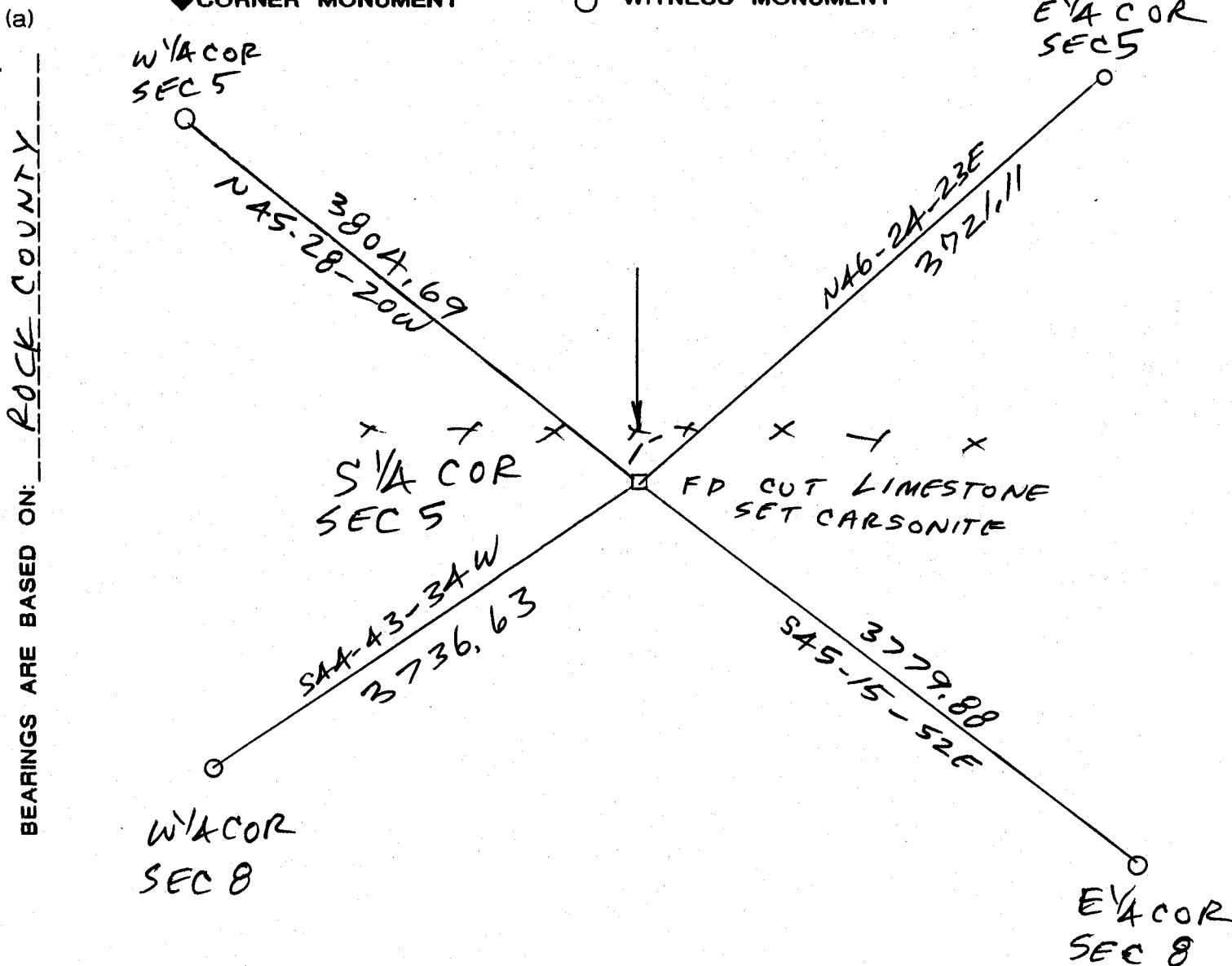
GPS (X) _____ TRAVERSE (X) _____

BASED ON THE FOLLOWING CONTROL:

PLACE MONUMENT SYMBOL \blacklozenge AT PROPER LOCATION ON ABOVE INDEX

\blacklozenge CORNER MONUMENT

\circ WITNESS MONUMENT



OBSERVATION SHEET 769

FIELD BOOK _____ PAGE # _____

SHEET 1 OF 1

SHOW A PLAN VIEW DRAWING DEPICTING THE CORNER MONUMENT AND SURROUNDING PHYSICAL FEATURES, INCLUDING THE EXCAVATION AREA AND DEPTH.

PLANNING & ZONING COMMITTEE ADOPTED THE ABOVE FORM ON 12/2/1982

CORNER CODE E-7

NE524

(B) Describe any record evidence, monument evidence, occupational evidence, testimonial evidence or any other material evidence you considered, and whether the monument was found or placed.

- 1834 MILLER PG 37 EAST RANDOM BETWEEN SECS 5 & 8
2046 ENTER MARSH
2508 LEAVE MARSH
2970 CREEK BOTTOM
3960 CREEK 5.28 SW
4884 LEAVE CREEK BOTTOM
5267.46 INTERSECTED SEC LINE 7.92' SOUTH POST
WEST CORRECTED BETWEEN SEC 5 & 8
2537.7 HICKORY 12 IN DIAMETER
2634.06 SET 1/4 SEC. POST HICKORY 10 S70W 54.78'; BUR OAK N82E 51.48'
3729.66 HICKORY 12 IN DIAMETER
5267.46 SEC COR.
- 1871 COLLINS REMONUMENTATION
PG 196 EAST BETWEEN 5 & 8 VARIATION 6-30
2641.32 SET 1/4 STONE BY WITNESS TREES
CONTINUED EAST VARIATION 6
3986.4 CREEK
5336.76 INTERSECT SECTION LINE 3.96' SOUTH OF CORNER
CORRECT VARIATION 6-05
- 1876 RUGER VOL 2 PG 244 VAR 5-45 2641.32 TO SW COR SEC 5 & VAR 5-51 2694.12 TO SE
COR SEC 5, 2608.32 TO CENTER 5, 5133.48 TO N 1/4 SEC 5
- 1975 BICKEL #3130 2650.0 TO S 1/4 COR SEC 5
- 1981 TOWNSEND #3198 2649.92 TO S 1/4 COR SEC 5, 2657.58 TO CENTER SEC 8, & 2658.92
TO W 1/4 COR SEC 8

FD CUT L.S. 0.2' ABOVE GROUND & 1' SOUTH OF E/W FENCE & ABOUT 200' EAST OF MARSHY AREA. PLACED CARSONITE POST NEXT TO L.S.

C) Was the corner restored through acceptance of (1) an obliterated evidence location, or, (2) a found perpetuated location?

ACCEPTED FOUND CUT LIMESTONE AS PERPETUATED.

D) Describe any material discrepancy between the location of the corner as restored or reestablished and the location of that corner as previously restored or reestablished by distance and direction. Show the discrepancy on the plan view drawing under (a), above. Show the distances between the corner as previously restored or reestablished and (1) the corner as restored or reestablished, and (2) to at least 4 of the witness monuments shown on the drawing in (a), above.

(E) Was the corner reestablished through lost corner proportionate methods? If so, show the method, including the directions and distances to other public land survey corners used as evidence or used for proportioning the corner location.

I, Donald Barnes, hereby certify that the corner location as identified by the corner code index was determined by me under my direction and control and that this U.S. Public Land Survey Monument Record is correct and complete to the best of my knowledge and belief.

seal



emboss

6-29-01

Number of included sheets 1

CORNER CODE E-7

A-E 7.08 REQUIREMENT