

# U.S. PUBLIC LAND SURVEY MONUMENT RECORD

For Public Land Survey Corners in:

WI ADMINISTRATIVE CODE A-E 7.08 REQUIREMENT

T. 1N., R. 11E

### CORNER CODE INDEX

	1	2	3	4	5	6	7	8	9	10	11	12	13	14	15	16	17	18	19	20	21	22	23	24	25
A																									
B																									
C																									
D																									
E																									
F																									
G																									
H																									
I																									
J																									
K																									
L																									
M																									
N																									
O																									
P																									
Q																									
R																									
S																									
T																									
U																									
V																									
W																									
X																									
Y																									
Z																									

NEWARK TWP

ROCK COUNTY WI

IF AVAILABLE  
ROCK COUNTY COORDINATES PREFERRED

North \_\_\_\_\_ Elev. \_\_\_\_\_

East \_\_\_\_\_

Hor. Datum \_\_\_\_\_ Vert. Datum \_\_\_\_\_

LATITUDE \_\_\_\_\_ ELLIPS. HT. \_\_\_\_\_

LONGITUDE \_\_\_\_\_

GPS (X) \_\_\_\_\_ TRAVERSE (X) \_\_\_\_\_

BASED ON THE FOLLOWING CONTROL:

PLACE MONUMENT SYMBOL  AT PROPER LOCATION ON ABOVE INDEX

CORNER MONUMENT

WITNESS MONUMENT

(a)

BEARINGS ARE BASED ON:

FIELD BOOK \_\_\_\_\_ PAGE # \_\_\_\_\_

SHEET 1 OF 2

SHOW A PLAN VIEW DRAWING DEPICTING THE CORNER MONUMENT AND SURROUNDING PHYSICAL FEATURES, INCLUDING THE EXCAVATION AREA AND DEPTH.

PLANNING & ZONING COMMITTEE ADOPTED THE ABOVE FORM ON 12/2/1982

CORNER CODE E-19

NE530

(B) Describe any record evidence, monument evidence, occupational evidence, testimonial evidence or any other material evidence you considered, and whether the monument was found or placed.

- 1834 MILLER EAST RANDOM BETWEEN SEC 2 & 11
  - 132 ENTER TIMBER
  - 5280 INTERSECTED SEC LINE 1.98' SOUTH OF POST. LAND GENTLY ROLLING 2<sup>ND</sup> RATE TIMBER OAK & HICKORY MUCH OAK HARD & ASPEN UNDER GROWTH.
    - WEST CORRECTED BETWEEN SECS 2 7 11
  - 2640 SET ¼ SEC POST
    - W.O. 22 N5 ½ W 118.8', W.O. 12 S56W 151.8'
    - 3960.66 WHITE OAK 20 IN. DIAM.
- 1871 COLLINS PG 158 EAST BETWEEN 2 & 11 VARIATION 7-30
  - 2647.92 SET 1/4 STONE IN PLACE OF STONE SET BY McVEAN AGREEING WITH STUMPS OF WITNESS TREES.
    - CONTINUED EAST SAME VARIATION
    - 5282.64 SEC CORNER
- 1882 HOLMES VOL 2 PG 347 CALLS FOR MON BUT STATES NOTHING ABOUT IT. 2648.91 TO CENTER OF SEC 11
- 1968 BATTERMAN VOL 4 PG 361 FD CUT STONE 2' DEEP & REFERENCED SAME.
- 1977 BARNES VOL 5 PG 332 FD REF PIPES
- 1977 BARNES VOL 5 PG 336 FD CUT STONE 2' DEEP. INSTALLED ALUM. MON. & REFERENCED SAME.

FOUND ALUM. MON LEANING TO THE NORTH. ACCEPTED INTERSECTION OF TIE DISTANCES.

C) Was the corner restored through acceptance of (1) an obliterated evidence location, or, (2) a found perpetuated location?


ACCEPTED OBLITERATED EVIDENCE LOCATION.

D) Describe any material discrepancy between the location of the corner as restored or reestablished and the location of that corner as previously restored or reestablished by distance and direction. Show the discrepancy on the plan view drawing under (a), above. Show the distances between the corner as previously restored or reestablished and (1) the corner as restored or reestablished, and (2) to at least 4 of the witness monuments shown on the drawing in (a), above.

DISCREPANCY OF 0.34 WITH FOUND LEANING ALUM. MON IS SHOWN ON DIAGRAM.

(E) Was the corner reestablished through lost corner proportionate methods? If so, show the method, including the directions and distances to other public land survey corners used as evidence or used for proportioning the corner location.

I, Donald Barnes, hereby certify that the corner location as identified by the corner code index was determined by me under my direction and control and that this U.S. Public Land Survey Monument Record is correct and complete to the best of my knowledge and belief.

seal  
  
 Dec 1 2000  
 emboss

Number of included sheets 1

CORNER CODE E-19

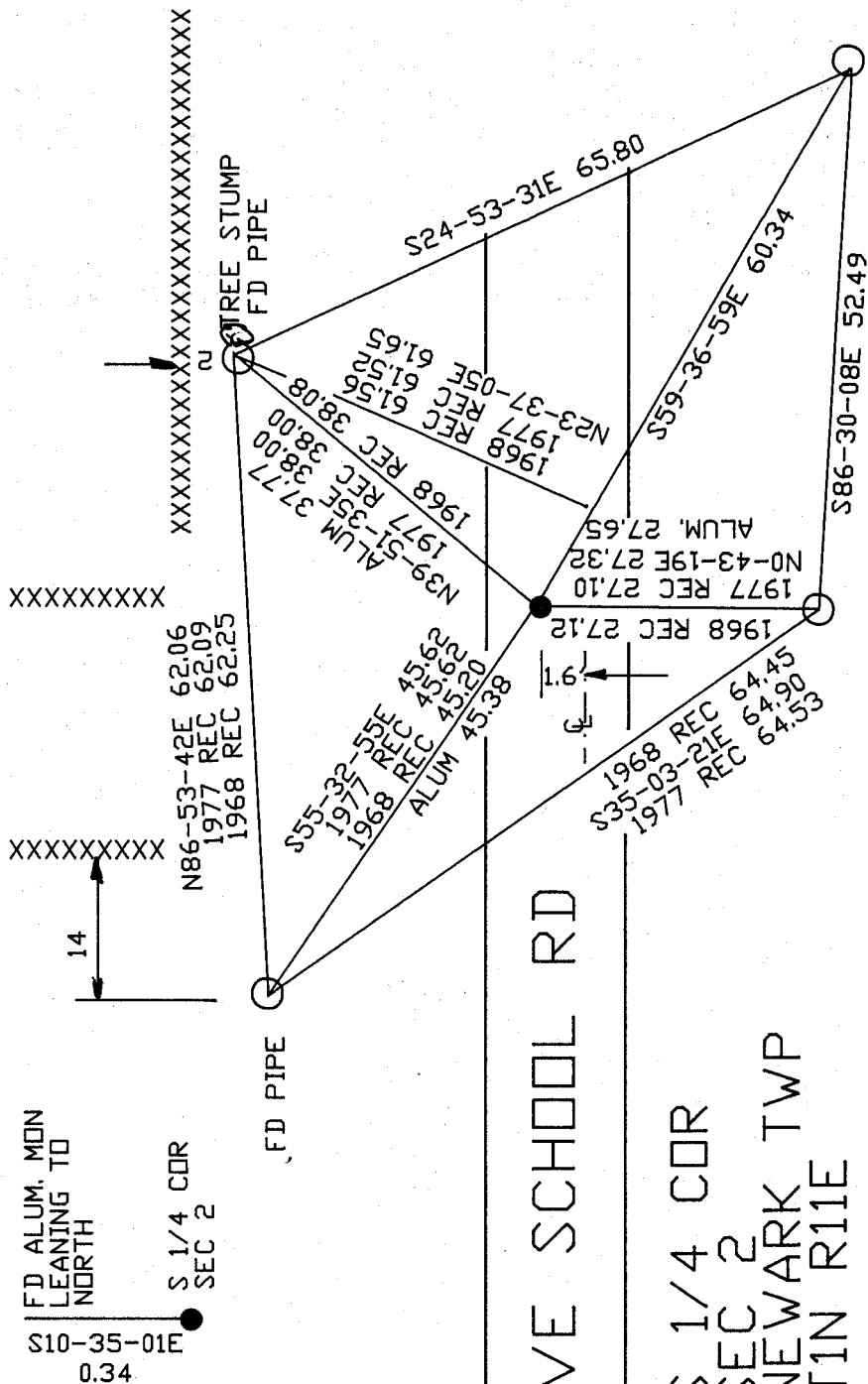
A-E 7.08 REQUIREMENT

EMBOSSSED SEAL

*Dec 1 2009  
Donald Barnes*

S 1/4 COR  
SEC 2  
NEWARK TWP  
T1N R11E

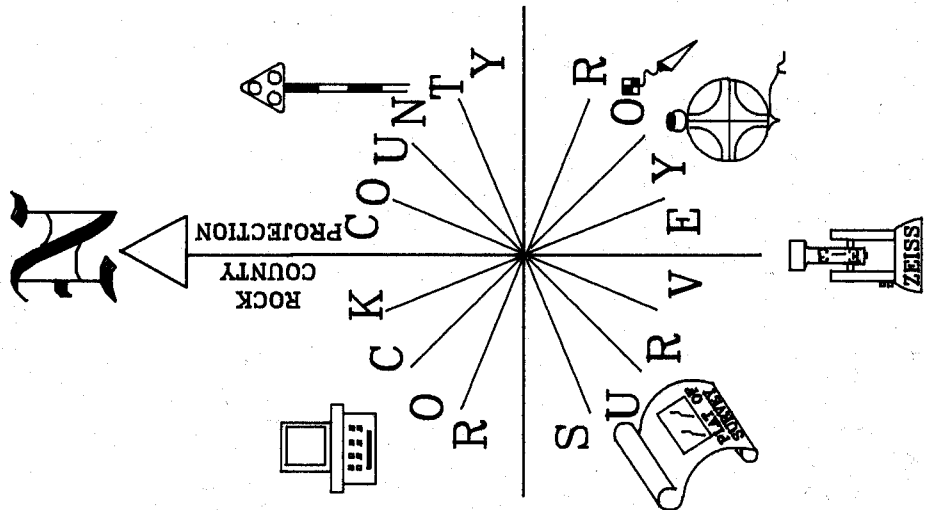
GROVE SCHOOL RD



FD PIPE LEANING EAST  
BECAUSE OF TREE ROOT

PLACED 3/4  
X 24" REROD/CAP

OBSERVATION SHEET #1530



E-19