

U.S. PUBLIC LAND SURVEY MONUMENT RECORD

For Public Land Survey Corners in:

WI ADMINISTRATIVE CODE A-E 7.08 REQUIREMENT

T. 1 N., R. 11 E

CORNER CODE INDEX

A	1	2	3	4	5	6	7	8	9	10	11	12	13	14	15	16	17	18	19	20	21	22	23	24	25
B		6				5				4				3				2			1				
C																									
D																									
E																									
F																									
G		7				8				9				10				11			12				
H																									
I																									
J																									
K																									
L		18				17				16				15				14			13				
M																									
N																									
O																									
P		19				20				21				22				23			24				
Q																									
R																									
S																									
T		30				29				28				27				26			25				
U																									
V																									
W																									
X		31				32				33				34				35			36				
Y																									
Z																									

NEWARK TWP
ROCK COUNTY WI

IF AVAILABLE
ROCK COUNTY COORDINATES PREFERRED

North _____ Elev. _____

East _____

Hor. Datum _____ Vert. Datum _____

LATITUDE _____ ELLIPS. HT. _____

LONGITUDE _____

GPS (X) _____ TRAVERSE (X) _____

BASED ON THE FOLLOWING CONTROL:

PLACE MONUMENT SYMBOL AT PROPER LOCATION ON ABOVE INDEX

CORNER MONUMENT WITNESS MONUMENT

(a) BEARINGS ARE BASED ON:

FIELD BOOK _____ PAGE # _____

SHEET 1 OF 3

SHOW A PLAN VIEW DRAWING DEPICTING THE CORNER MONUMENT AND SURROUNDING PHYSICAL FEATURES, INCLUDING THE EXCAVATION AREA AND DEPTH.

PLANNING & ZONING COMMITTEE ADOPTED THE ABOVE FORM ON 12/2/1982

CORNER CODE E-1

NE521

(B) Describe any record evidence, monument evidence, occupational evidence, testimonial evidence or any other material evidence you considered, and whether the monument was found or placed.

- 1833 MULLETT SEP 4 NORTH ON EAST SIDE SECTION 12
1254 LEAVE MARSH
2640 SET QUARTER SECTION POST BUR OAK 18 N75W 49.5'; BLACK OAK 8 N73E 38.28'
2904 ENTER MARSH
3696 LEAVE MARSH
5280 SET POST CORNER SECTIONS 1 & 12. BLACK OAK 10 N47W 19.8'; BLACK OAK 10 S42W 58.74'. EXCEPT MARSH LAND ROLLING SECOND RATE TIMBER WHITE BLACK AND BUR OAK
NORTH ON EAST SIDE SECTION 1
539.22 BLACK OAK 12 IN DIAMETER
2640 SET QUARTER SECTION POST BLACK OAK 18 N36W 65.34', BLACK OAK 8 S64W 177.54'
3794.34 BUR OAK 10 IN DIAMETER
5280 SET TEMPORARY 6 MILE POST LAND ROLLING SECOND RATE WHITE & BUR OAK SEP 4TH 1833
- 1834 HARRISON JAN 27 EAST ON RANDOM BETWEEN SEC 1 & 12
990 LEAVE MARSH & ENTER TIMBER
2640 SET TEMPY 1/4 P
5280 INT. E BDY 13.2' S OF P. LAND ? 2ND RATE, TIMBER ALL BURR
WEST COR
2640 QUARTER SEC COR. BUR OAK 10 N16E 46.2'; BURR OAK 10 N46E 54.12.
BUR OAK 10 MARKED, BURR 10 MARKED
3754.74 BURR OAK 18
5280 SEC COR
- 1834 MILLER WEST ON RAND BET. 6 & 7
132 ENTER MARSH S.E.
2838 LEAVE SAME
5336.76 INTERSECT RANGE LINE 3.96' S POST. LAND EAST HALF MARSH, W. HALF TIMBERED WITH OAK & HICKORY HAS ON IT SOME MARSHY ?
EAST CORRECTION BETWEEN SEC 6 & 7
2696.76 SET 1/4 SEC POST IN MARSH & THICKET OF SMALL ASPENS ASPEN 5 IN N45E 6.6', ASPEN 6 IN S45W 7.26' BEARINGS TO COR OF SECS 6 & 7 BUR OAK 6 N72E 31.68' & BUR OAK 8 S60E 33.66'
- 1871 COLLIN'S REMONUMENTATION NOTES
NORTH ON WEST LINE OF 7 VARIATION 6
2664.42 SET 1/4 STONE BY ROOTS OF WITNESS TREES.
CONTINUED NORTH VARIATION 6-30
5333.46 SET STONE FOR CORNER OF 6 & 7 BY WITNESS TREE AND STUMP.
EAST BETWEEN 6 & 7 VARIATION 4-30
2712.6 SET 1/4 STONE IN MARSH IN PLACE OF PLAINLY MARKED STAKE.
CONTINUED EAST SAME VARIATION
5390.88 SECTION CORNER
- 1871 RUGER VOL 2 PG 65 2669.04' TO W 1/4 COR SEC 7. STATES NOTHING ABOUT COR. SURVEY IN SEC 12 AVON.
1981 BARNES VOL 6 PG 160 DUG 10' DEEP & FD NOTHING

DUG 10' DEEP HOLE IN NEW LOCATION. DIGGERS HOTLINE FOUND NOTHING SO THE OLD STEEL UNDERGROUND CABLE SIGN WAS FOR AN ABANDONED LINE. TERRAIN INDICATES CUT L.S. SHOULD STILL BE THERE.

SHEET 1 OF 3

Donald Barnes

CORNER CODE **E-1**

7-20-01

NE521

C) Was the corner restored through acceptance of (1) an obliterated evidence location, or, (2) a found perpetuated location?

RESTORED CORNER THROUGH ACCEPTANCE OF OBLITERATED EVIDENCE LOCATION. USED COLLIN'S REMONUMENTATION DISTANCES FOR PRORATION. INSTALLED A POLY. MON. WITH CARSONITE SIGN.

D) Describe any material discrepancy between the location of the corner as restored or reestablished and the location of that corner as previously restored or reestablished by distance and direction. Show the discrepancy on the plan view drawing under (a), above. Show the distances between the corner as previously restored or reestablished and (1) the corner as restored or reestablished, and (2) to at least 4 of the witness monuments shown on the drawing in (a), above.

(E) Was the corner reestablished through lost corner proportionate methods? If so, show the method, including the directions and distances to other public land survey corners used as evidence or used for proportioning the corner location.

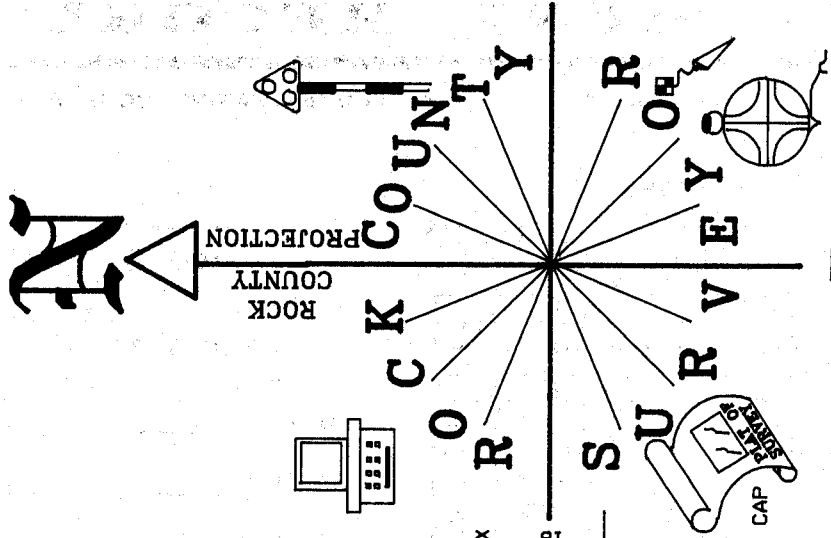
I, Donald Barnes, hereby certify that the corner location as identified by the corner code index was determined by me under my direction and control and that this U.S. Public Land Survey Monument Record is correct and complete to the best of my knowledge and belief.

^{seal}
Donald Barnes
7-20-01
emboss

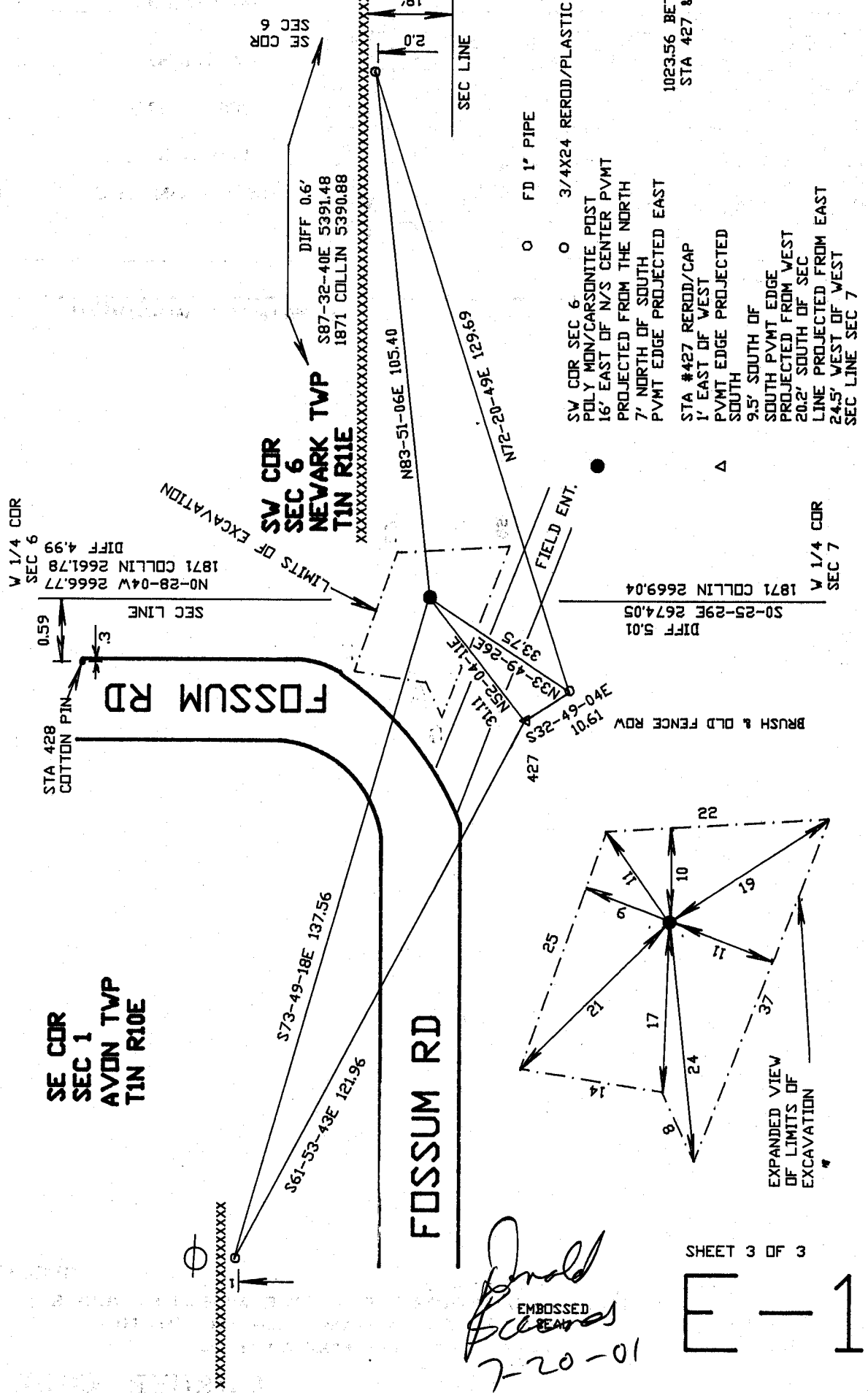
SHEET 2 OF 3

CORNER CODE **E-1**

A-E 7.08 REQUIREMENT



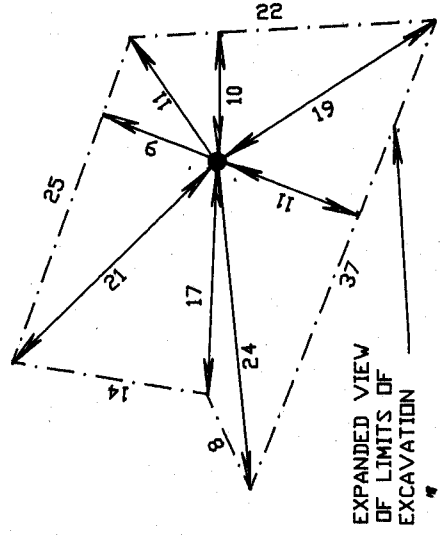
NOT TO SCALE
OBSERVATION SHEET #427



SW CDR SEC 6
POLY MON/CARSONITE POST
16' EAST OF N/S CENTER PVMT
PROJECTED FROM THE NORTH
7' NORTH OF SOUTH
PVTM EDGE PROJECTED EAST

STA #427 REROD/CAP
1' EAST OF WEST
PVTM EDGE PROJECTED
SOUTH
9.5' SOUTH OF
SOUTH PVMT EDGE
PROJECTED FROM WEST
20.2' SOUTH OF SEC
LINE PROJECTED FROM EAST
24.5' WEST OF WEST
SEC LINE SEC 7

1023.56 BETWEEN
STA 427 & 428



EXPANDED VIEW
OF LIMITS OF
EXCAVATION

SHEET 3 OF 3

E 1

Donald
EMBOSSED
SEALS
7-20-01

SE CDR
SEC 1
AVON TWP
TIN R10E

SW CDR
SEC 6
NEVARK TWP
TIN R10E

W 1/4 CDR
SEC 6
NO-28-04W 2666.77
DIFF 4.99
1871 COLLIN 2661.78

W 1/4 CDR
SEC 7
S0-25-29E 2674.05
DIFF 5.01
1871 COLLIN 2669.04

XXXXXXXXXXXXXXXXXXXXX
1