

# U.S. PUBLIC LAND SURVEY MONUMENT RECORD

For Public Land Survey Corners in:

WI ADMINISTRATIVE CODE A-E 7.08 REQUIREMENT

T. 1 N., R. 11 E

### CORNER CODE INDEX

NEWARK TWP

ROCK COUNTY WI

IF AVAILABLE  
ROCK COUNTY COORDINATES PREFERRED

A	1	2	3	4	5	6	7	8	9	10	11	12	13	14	15	16	17	18	19	20	21	22	23	24	25
B	6																								
C		5																							
D																									
E																									
F																									
G	1																								
H		8																							
I			9																						
J																									
K																									
L	18																								
M		11																							
N			16																						
O																									
P																									
Q	19																								
R		20																							
S			21																						
T																									
U																									
V																									
W																									
X																									
Y																									
Z																									

North \_\_\_\_\_ Elev. \_\_\_\_\_

East \_\_\_\_\_

Hor. Datum \_\_\_\_\_ Vert. Datum \_\_\_\_\_

LATITUDE \_\_\_\_\_ ELLIPSE \_\_\_\_\_

LONGITUDE \_\_\_\_\_

GPS (X) \_\_\_\_\_ TRAVERSE (X) \_\_\_\_\_

BASED ON THE FOLLOWING CONTROL:

PLACE MONUMENT SYMBOL  AT PROPER LOCATION ON ABOVE INDEX

CORNER MONUMENT

WITNESS MONUMENT

(a)

BEARINGS ARE BASED ON:

FIELD BOOK \_\_\_\_\_ PAGE # \_\_\_\_\_

SHEET 1 OF 2

SHOW A PLAN VIEW DRAWING DEPICTING THE CORNER MONUMENT AND SURROUNDING PHYSICAL FEATURES, INCLUDING THE EXCAVATION AREA AND DEPTH.

PLANNING & ZONING COMMITTEE ADOPTED THE ABOVE FORM ON 12/2/1982

CORNER CODE C 13

NE517

(B) Describe any record evidence, monument evidence, occupational evidence, testimonial evidence or any other material evidence you considered, and whether the monument was found or placed.

1834 MILLER MARCH 10

NORTH BETWEEN SECS 3 & 4

2319.9 TRAIL CRS N.W.

2640 SET 1/4 SECS POST IN MOUND OF EARTH AND SOD

5283.3 INTERSECT N. BOUNDARY. 33.66' EAST OF POST. SET POST IN MOUND OF STONE. COR OF SEC 3 & 4. LAND ROLLING 2ND RATE.

1871 COLLINS REMONUMENTATION

PG 172 NORTH BETWEEN 3 & 4 VARIATION 6-30

2682.9 SET 1/4 STONE IN LINE WITH FENCES EAST & WEST.

CONTINUED NORTH VARIATION 6-25

5134.8 SET STONE FOR CORNER OF 3 & 4 33.66' EAST OF PLYMOUTH CORNER. OCT 26, 1871

1873 RUGER VOL 2 PG 117 STONE MON. 2676.3 TO SW COR SEC 3, VAR 1-20 2658.65 TO CENTER OF SEC 3, VAR 1-20 5304.92 TO E 1/4 COR SEC 3

1882 HOLMES VOL 2 PG 349 1/4 MON. 2487.21 TO NW COR SEC 3.

1882 RUGER VOL 2 PG 403 STATE NOTHING ABOUT MON. 2659.64 TO CENTER OF SEC 3, 2676.52 TO SW COR SEC 3, 2488.86 TO NW COR SEC 3.

1959 BATTERMAN VOL 4 PG 31 FD CUT STONE MON 3' DEEP SET PIPE ON TOP & REF. SAME

1984 LEUENBERGER CSM VOL 11 PG 630 FD PK NAIL FROM TIES.

1987 LEUENBERGER CSM VOL 12 PG 601 FD PK CHECKED TIES.

#### FD PK AND TIES

C) Was the corner restored through acceptance of (1) an obliterated evidence location, or, (2) a found perpetuated location?

RESTORED CORNER THROUGH ACCEPTANCE OF INTERSECTION OF TIES TO REFERENCE PIPES.

D) Describe any material discrepancy between the location of the corner as restored or reestablished and the location of that corner as previously restored or reestablished by distance and direction. Show the discrepancy on the plan view drawing under (a), above. Show the distances between the corner as previously restored or reestablished and (1) the corner as restored or reestablished, and (2) to at least 4 of the witness monuments shown on the drawing in (a), above.

PK DOES NOT FIT REFERENCE TIES.

(E) Was the corner reestablished through lost corner proportionate methods? If so, show the method, including the directions and distances to other public land survey corners used as evidence or used for proportioning the corner location.

I, Donald Barnes, hereby certify that the corner location as identified by the corner code index was determined by me under my direction and control and that this U.S. Public Land Survey Monument Record is correct and complete to the best of my knowledge and belief.

seal

*Donald Barnes*

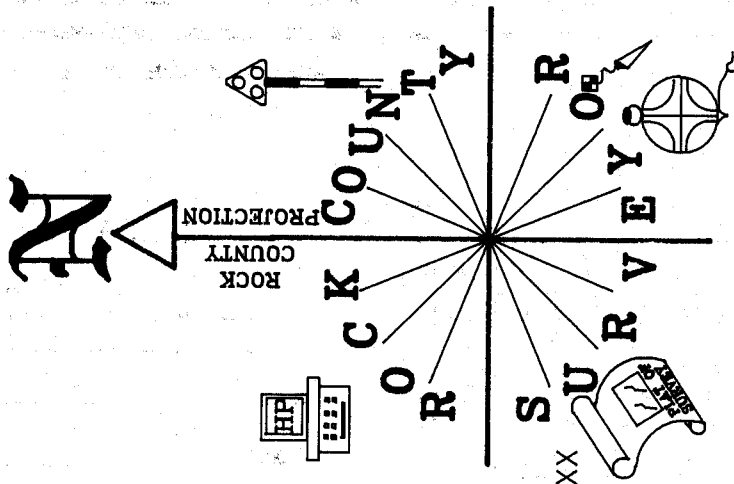
6-25-01

emboss

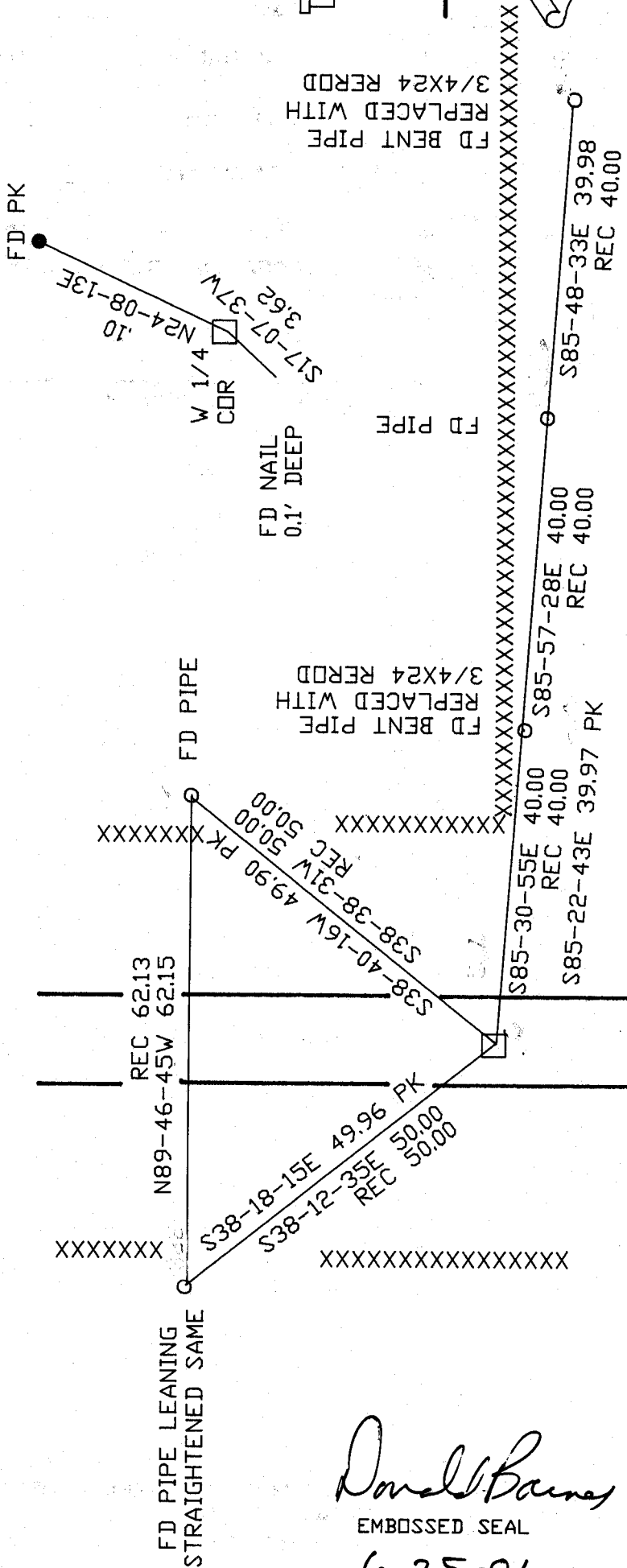
Number of included sheets 1

CORNER CODE **C-13**

A-E 7.08 REQUIREMENT

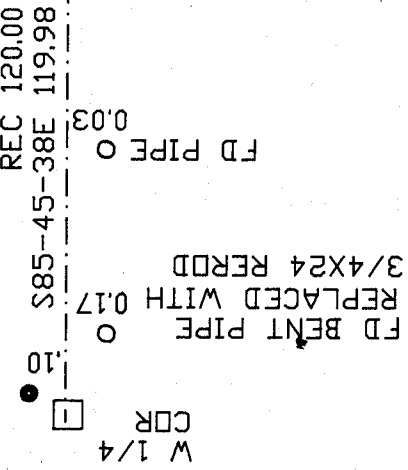


OBSERVATION SHEET 1517



**W 1/4 COR  
SEC 3  
NEWARK TWP**

*Donald Barney*  
EMBOSSSED SEAL  
6-25-01



W 1/4 COR  
INTERSECTION OF  
REC. TIES  
SET NOTHING

C-13