

Paper weight-110# (minimum)

Black nonfading ink required

U.S. PUBLIC LAND SURVEY MONUMENT RECORD

For Public Land Survey Corners In:

WI ADMINISTRATIVE CODE A-E 7.08 REQUIREMENT

T. 4 N. R. 11 E. 4th P.M.

REV 10/23/2004

USMONREC.DWG

CORNER CODE INDEX

PORTER TWP

ROCK COUNTY WI

IF AVAILABLE

ROCK COUNTY COORDINATES PREFERRED

| | | | | | | | | | | | | | | | | | | | | | | | | | |
|---|----|---|---|---|---|----|---|---|----|----|----|----|----|----|----|----|----|----|----|----|----|----|----|----|---|
| 1 | 2 | 3 | 4 | 5 | 6 | 7 | 8 | 9 | 10 | 11 | 12 | 13 | 14 | 15 | 16 | 17 | 18 | 19 | 20 | 21 | 22 | 23 | 24 | 25 | |
| A | | | | | | | | | | | | | | | | | | | | | | | | | A |
| B | 6 | | | | | 5 | | | | 4 | | | | 3 | | | | 2 | | | | 1 | | | B |
| C | | | | | | | | | | | | | | | | | | | | | | | | | C |
| D | | | | | | | | | | | | | | | | | | | | | | | | | D |
| E | | | | | | | | | | | | | | | | | | | | | | | | | E |
| F | | | | | | | | | | | | | | | | | | | | | | | | | F |
| G | 7 | | | | | 8 | | | | 9 | | | | 10 | | | | 11 | | | | 12 | | | G |
| H | | | | | | | | | | | | | | | | | | | | | | | | | H |
| J | | | | | | | | | | | | | | | | | | | | | | | | | J |
| K | 18 | | | | | 17 | | | | 16 | | | | 15 | | | | 14 | | | | 13 | | | K |
| L | | | | | | | | | | | | | | | | | | | | | | | | | L |
| M | | | | | | | | | | | | | | | | | | | | | | | | | M |
| N | | | | | | | | | | | | | | | | | | | | | | | | | N |
| O | | | | | | | | | | | | | | | | | | | | | | | | | O |
| P | 19 | | | | | 20 | | | | 21 | | | | 22 | | | | 23 | | | | 24 | | | P |
| Q | | | | | | | | | | | | | | | | | | | | | | | | | Q |
| R | | | | | | | | | | | | | | | | | | | | | | | | | R |
| S | | | | | | | | | | | | | | | | | | | | | | | | | S |
| T | 30 | | | | | 29 | | | | 28 | | | | 27 | | | | 26 | | | | 25 | | | T |
| U | | | | | | | | | | | | | | | | | | | | | | | | | U |
| V | | | | | | | | | | | | | | | | | | | | | | | | | V |
| W | | | | | | | | | | | | | | | | | | | | | | | | | W |
| X | 31 | | | | | 32 | | | | 33 | | | | 34 | | | | 35 | | | | 36 | | | X |
| Y | | | | | | | | | | | | | | | | | | | | | | | | | Y |
| Z | | | | | | | | | | | | | | | | | | | | | | | | | Z |

North _____ Elev. _____

East _____

Hor. Datum _____ Vert. Datum _____

LATITUDE _____ ELLIPS. HT. _____

LONGITUDE _____

NAD83(91) _____ NETWORK ADJ. YR _____

GPS (X) _____ TRAVERSE (X) _____

BASED ON THE FOLLOWING CONTROL:

PLACE MONUMENT SYMBOL AT PROPER LOCATION ON ABOVE INDEX

CORNER MONUMENT

WITNESS MONUMENT

(a)

BEARINGS ARE BASED ON: -----

FIELD BOOK _____ PAGE # _____

SHEET 1 OF 2

SHOW A PLAN VIEW DRAWING DEPICTING THE CORNER MONUMENT AND SURROUNDING PHYSICAL FEATURES, INCLUDING THE EXCAVATION AREA AND DEPTH.

PLANNING & ZONING COMMITTEE ADOPTED THIS FORM ON 12/2/1982

CORNER CODE T-6

P01595 N1/16THSW1/4SEC29

(B) Describe any record evidence, monument evidence, occupational evidence, testimonial evidence or any other material evidence you considered, and whether the monument was found or placed.

- 1857 RUGER VOL 2 PG 68 SET STAKE DEEP & PUT ON TOP IT HH STONE 12X6X6 SURROUNDED WITH 6 HH VAR 7-28 1326.44 TO GEN SEC 29 & W 1/4 COR SEC 29.
- 1973 LEE VOL 4 PG 596 DUG & FD HH OVER REMAINS OF STAKE SURROUNDED BY 6 HH. REFERENCED SAME
- 1978 PHILLIPSON CSM VOL 8 PG 33
FD 3/8 IRON ROD, 1322.84 TO GEN SEC 29, ANGLE 89-43-42 @ GEN SEC 29 FROM 1/16TH COR TO MON IN BOX @ N 1/4 COR SEC 29

I USED MY 1979 OBSERVATIONS TO FD PIPE & MY CURRENT TIE IN TO THE FD REFERENCE MONUMENTS TO NE, NW & SE.

C) Was the corner restored through acceptance of (1) an obliterated evidence location, or, (2) a found perpetuated location?

ACCEPTED FD PIPE & TIES

D) Describe any material discrepancy between the location of the corner as restored or reestablished and the location of that corner as previously restored or reestablished by distance and direction. Show the discrepancy on the plan view drawing under (a), above. Show the distances between the corner as previously restored or reestablished and (1) the corner as restored or reestablished, and (2) to at least 4 of the witness monuments shown on the drawing in (a), above.

(E) Was the corner reestablished through lost corner proportionate methods? If so, show the method, including the directions and distances to other public land survey corners used as evidence or used for proportioning the corner location.

I, DONALD BARNES, hereby certify that the corner location as identified by the corner code index was determined by me under my direction and control and that this U.S. Public Land Survey Monument Record is correct and complete to the best of my knowledge and belief.

Seal
Donald

SHEET 1 OF 2

EMBERS
Barnes

3-19-2009

CORNER CODE

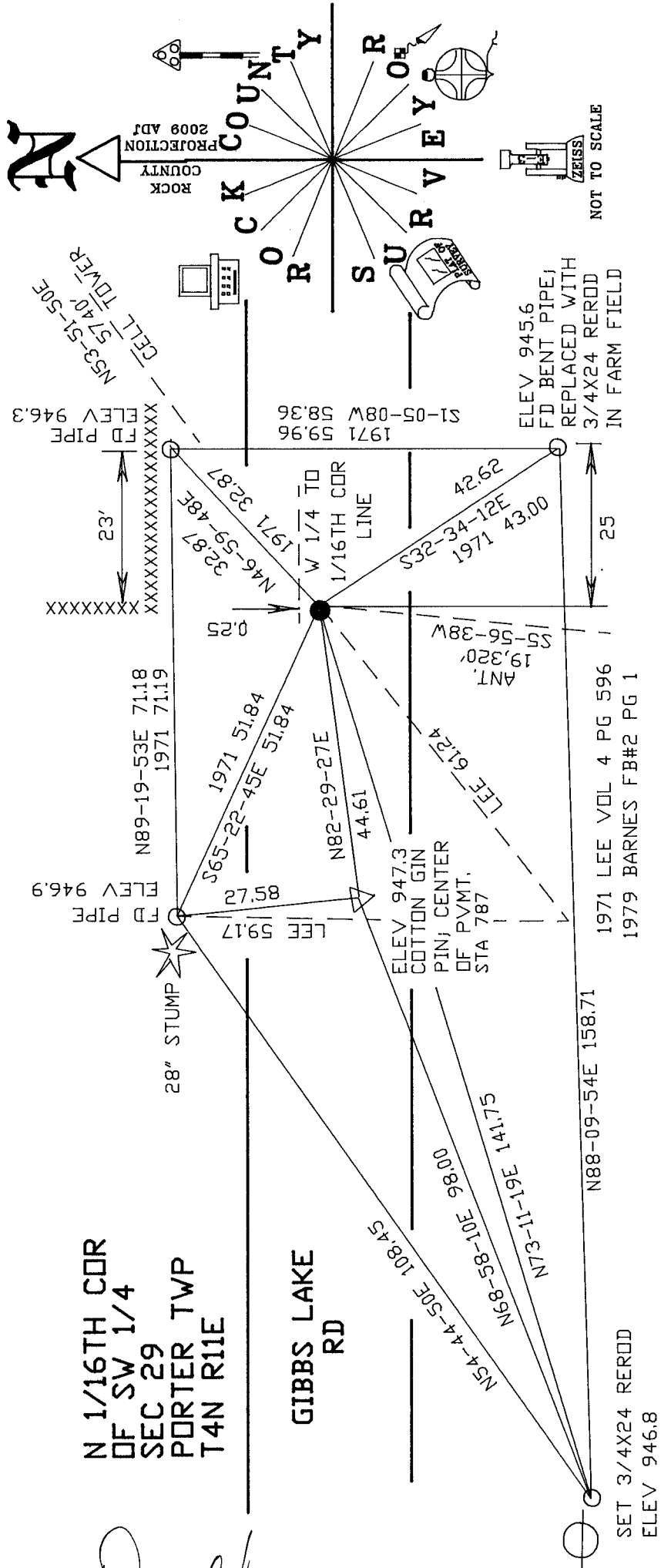
T-6

A.E. 7.08 REQUIREMENT

N 1/16TH CDR
 OF SW 1/4
 SEC 29
 PORTER TWP
 T4N R11E

GIBBS LAKE
 RD

Donald Barnes
 EMBOSSED
 SEAL
 3-20/2009



SHEET 2 OF 2

T-6

ROCK COUNTY
 PROJECTION
 2009 ADI

ROCK COUNTY
 SURVEY

NOT TO SCALE

SET 3/4X24 REROD
 ELEV 946.8

ELEV 945.6
 FD BENT PIPE,
 REPLACED WITH
 3/4X24 REROD
 IN FARM FIELD

1971 LEE VOL 4 PG 596
 1979 BARNES FB#2 PG 1

N88-09-54E 158.71

N13-11-19E 1141.75
 N68-58-10E 98.00
 N5-4-4-50E 108.45

ELEV 947.3
 COTTON GIN
 PIN; CENTER
 OF PVMT.
 STA 787

ANT.
 19,320
 55-56-38W

42.92
 S32-34-12E
 1971 43.00

1971 59.96
 S1-05-08W 58.36

FD PIPE
 ELEV 946.3

NS3-S1-50E
 CELL TOWER

N89-19-53E 71.18
 1971 71.19
 FD PIPE
 ELEV 946.9

1971 51.84
 S65-22-45E 51.84

N82-29-27E
 44.61

23'
 XXXXXXXXXXXXXXXXXXXXXXX

1971 32.87
 N46-59-48E

1971 32.87
 W 1/4 TO
 1/16TH CDR
 LINE

28" STUMP

0.25

