

U.S. PUBLIC LAND SURVEY MONUMENT RECORD

For Public Land Survey Corners in:

WI ADMINISTRATIVE CODE A-E 7.08 REQUIREMENT

T. 1 N., R. 11 E

CORNER CODE INDEX

A	1	2	3	4	5	6	7	8	9	10	11	12	13	14	15	16	17	18	19	20	21	22	23	24	25
B	6																								
C		5																							
D			4																						
E				3																					
F					2																				
G	1																								
H		8																							
J			9																						
K				10																					
L	18																								
M		11																							
N			16																						
O				15																					
P					14																				
Q	19																								
R		20																							
S			21																						
T				22																					
U					23																				
V						24																			
W							25																		
X								26																	
Y									27																
Z										28															
											29														
												30													
													31												
														32											
															33										
																34									
																	35								
																		36							

PLACE MONUMENT SYMBOL  AT PROPER LOCATION ON ABOVE INDEX

NEWARK TWP
ROCK COUNTY WI

IF AVAILABLE
ROCK COUNTY COORDINATES PREFERRED

North _____ Elev. _____

East _____

Hor. Datum _____ Vert. Datum _____

LATITUDE _____ ELLIPS. HT. _____

LONGITUDE _____

GPS (X) _____ TRAVERSE (X) _____

BASED ON THE FOLLOWING CONTROL:

 CORNER MONUMENT

 WITNESS MONUMENT

(a)

BEARINGS ARE BASED ON:

OBSERVATION sheet 848

FIELD BOOK _____ PAGE # _____

SHEET 1 OF 3

SHOW A PLAN VIEW DRAWING DEPICTING THE CORNER MONUMENT AND SURROUNDING PHYSICAL FEATURES, INCLUDING THE EXCAVATION AREA AND DEPTH.

PLANNING & ZONING COMMITTEE ADOPTED THE ABOVE FORM ON 12/2/1982

CORNER CODE 2 15

NE628

(B) Describe any record evidence, monument evidence, occupational evidence, testimonial evidence or any other material evidence you considered, and whether the monument was found or placed.

- 1832 LYONS PG 3 EAST ALONG THE SOUTH SIDE OF SEC 34 VAR 6-50E
2640 SET POST FOR 1/4 SECTION CORNER BLACK OAK 26 N50W 99.66';
BLACK OAK 24 N21E 31.02'
5134.8 TO A SPRING RUN 1.32' CR N
5280 SET POST FOR CORNER TO SEC 34 & 35 BUR OAK 17 N53W 64.02';
BUR OAK 12 N61E 85.14' LAND ROLLING 3RD RATE AND THINLY
WOODED WITH OAK
- 1840 SPAULDING ILLINOIS ORIG SURVEYOR (JAN & FEB)

PAGE 2

MEASURING CHAIN COMPARED WITH THE STANDARD CHAIN
AND FOUND TO BE OF THE RIGHT LENGTH ADJUST MY COMPASS
AT 6-53 VARIATION EAST TO AGREE WITH THE 3RD PRINCIPAL
MERIDIAN ALONG THE EAST BOUNDARY OF TOWNSHIP 28
NORTH RANGE 11 EAST OF THE 4TH PRINCIPAL MERIDIAN.
EAST ON A RANDOM LINE ALONG THE SOUTH BOUNDARY
OF SECTION 34 TOWNSHIP ONE NORTH RANGE 11 EAST OF THE
4TH PRINCIPAL MERIDIAN VARIATION 6-53 E FROM THE CORNER
TO SECTION 33 AND 34

- 2655.84 I FELL 23.76' NORTH OF THE POST FOR QUARTER SECTION
CORNER. MY OBJECT IN RUNNING THIS LINE WAS TO
ASCERTAIN ITS LENGTH AND BEARING. FEBRUARY 22, 1840
- 1863 LOCKE VOL 1 PG 176 VAR 6-00 ALONG SOUTH LINE OF SEC 34, VAR 5-45
2649.24 TO CENTER OF SEC 34, 5298.48 TO N 1/4 COR SEC 34. SET STAKE.
FD STUMPS OF BEARING TREES - STAKE GONE.
- 1871 COLLIN'S REMONUMENTATION NOTES
PG 161 WEST ON SOUTH LINE OF 34 VARIATION 5-30
2649.9 INTERSECT 1/4 LINE 5.28' SOUTH OF CORNER. SET 1/4 STONE
BY AND ROOTS OF WITNESS TREES. CORRECTED VARIATION
5-37

CONTINUED WEST VARIATION 5-30

- 5297.82 INTERSECT SECTION LINE 6.6' NORTH OF CORNER SET STONE
FOR CORNER OF 33,34 IN PLACE OF STAKE AND STONES
AGREEING WITH STUMPS OF WITNESS TREES. CORRECTED
VARIATION 5-21920? TISSANDIER SET CONC. MON. WITH BRASS
PLUG AT NW COR SEC 24. 3291.00' TO NE COR SEC 24, 5265.80' TO
COR SEC 23, & ANGLE OF 179-58-18 @ NW COR SEC 24 FROM NE
COR 24 TO NW COR SEC 24.

Donald Barnes
7-89-01

NE628

1979 THOM #3296 2681.18 TO S 1/4 COR SEC 35, 2606.64 TO W 1/4 COR SEC 35
1998 HOULE CSM 21 PG 260 2629.56 TO CENTER OF SEC 34

FD CUT LIMESTONE & CARSONITE IN FENCE ROW.

C) Was the corner restored through acceptance of (1) an obliterated evidence location, or, (2) a found perpetuated location?

ACCEPTED FD CUT LIMESTONE

D) Describe any material discrepancy between the location of the corner as restored or reestablished and the location of that corner as previously restored or reestablished by distance and direction. Show the discrepancy on the plan view drawing under (a), above. Show the distances between the corner as previously restored or reestablished and (1) the corner as restored or reestablished, and (2) to at least 4 of the witness monuments shown on the drawing in (a), above.

(E) Was the corner reestablished through lost corner proportionate methods? If so, show the method, including the directions and distances to other public land survey corners used as evidence or used for proportioning the corner location.

I, Donald Barnes, hereby certify that the corner location as identified by the corner code index was determined by me under my direction and control and that this U.S. Public Land Survey Monument Record is correct and complete to the best of my knowledge and belief.

seal

Donald Barnes

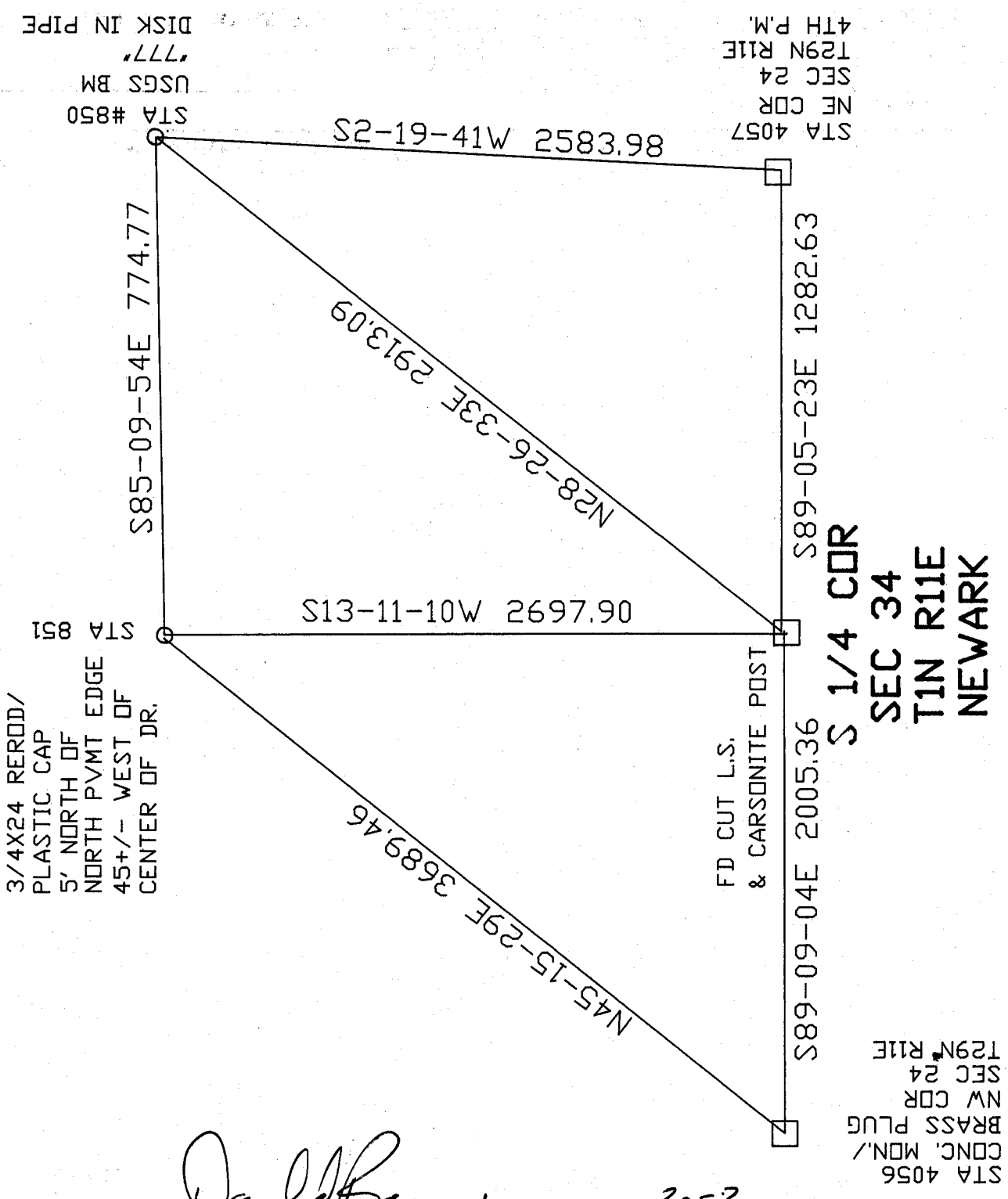
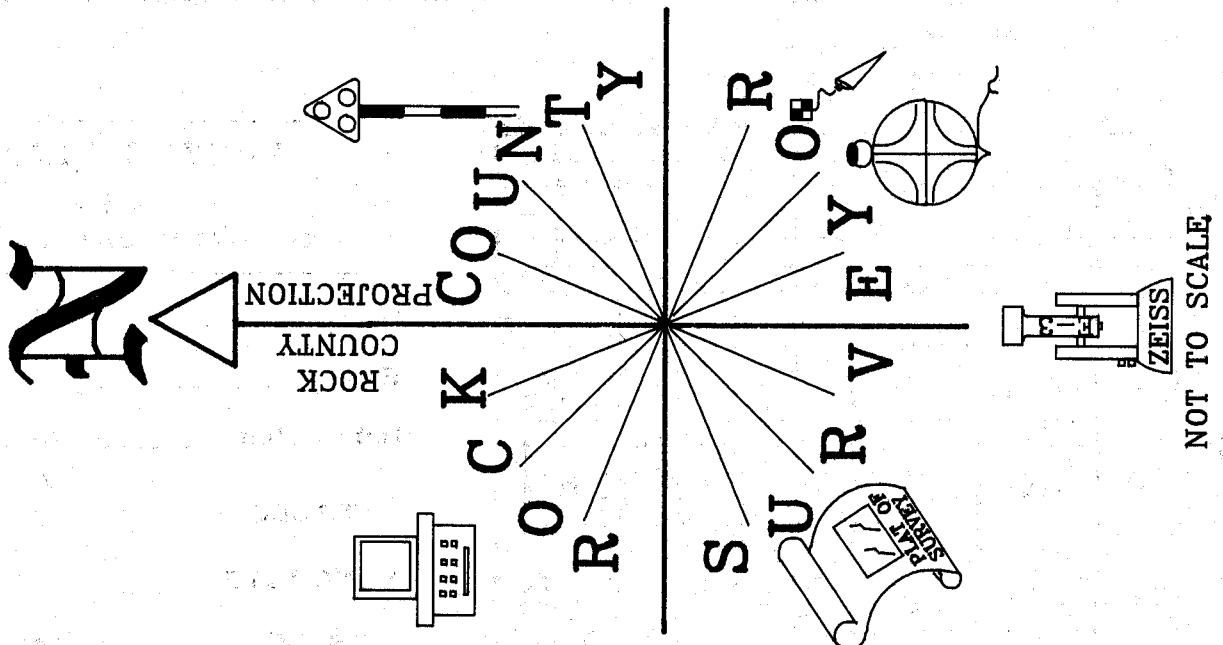
emboss

7-09-01

SHEET 2 OF 3

CORNER CODE **Z-15**

A-E 7.08 REQUIREMENT



Donald Barnes

EMBOSS
SEAL

7-11-01

3 OF 3

Z-15

NOT TO SCALE