

# U.S. PUBLIC LAND SURVEY MONUMENT RECORD

For Public Land Survey Corners in:

WI ADMINISTRATIVE CODE A-E 7.08 REQUIREMENT

T. 1 N., R. 11 E

### CORNER CODE INDEX

A	1	2	3	4	5	6	7	8	9	10	11	12	13	14	15	16	17	18	19	20	21	22	23	24	25
B																									
C	6																								
D																									
E																									
F	1																								
G		8																							
H																									
I																									
J																									
K	18																								
L		17																							
M																									
N																									
O																									
P	19																								
Q		20																							
R																									
S																									
T	30																								
U		29																							
V																									
W																									
X	31																								
Y		32																							
Z																									

NEWARK TWP

ROCK COUNTY WI

IF AVAILABLE  
ROCK COUNTY COORDINATES PREFERRED

North \_\_\_\_\_ Elev. \_\_\_\_\_

East \_\_\_\_\_

Hor. Datum \_\_\_\_\_ Vert. Datum \_\_\_\_\_

LATITUDE \_\_\_\_\_ ELLIPS. HT. \_\_\_\_\_

LONGITUDE \_\_\_\_\_

GPS (X) \_\_\_\_\_ TRAVERSE (X) \_\_\_\_\_

BASED ON THE FOLLOWING CONTROL:

PLACE MONUMENT SYMBOL  AT PROPER LOCATION ON ABOVE INDEX

CORNER MONUMENT

WITNESS MONUMENT

(a)

BEARINGS ARE BASED ON:

FIELD BOOK \_\_\_\_\_ PAGE # \_\_\_\_\_

SHEET 1 OF 2

SHOW A PLAN VIEW DRAWING DEPICTING THE CORNER MONUMENT AND SURROUNDING PHYSICAL FEATURES, INCLUDING THE EXCAVATION AREA AND DEPTH.

PLANNING & ZONING COMMITTEE ADOPTED THE ABOVE FORM ON 12/2/1982

CORNER CODE X5

NE615

(B) Describe any record evidence, monument evidence, occupational evidence, testimonial evidence or any other material evidence you considered, and whether the monument was found or placed.

- 1834 MILLER PG 30 NORTH BETWEEN SECS 31 & 32  
1454.64 BUR OAK 10 IN DIA  
2640 SET 1/4 SEC POST BUR OAK 12 S14W 203.28'; BUR OAK 12 N63E 409.86'  
4290 LEAVE PRAIRIE  
5280 CORNER OF 29,30,31,32 A YELLOW OAK 20 IN DIAMETER  
LAND LEVEL 2ND RATE SANDY PRAIRIE WITH SOME SCATTERING  
TREES
- 1871 COLLINS REMONUMENTATION NOTES  
PG 186 NORTH BETWEEN 31 & 32 VARIATION 5-15  
2641.32 SET 1/4 STONE BY LINE TREE AND STUMP OF WITNESS TREE  
AGREEING IN COURSE AND 137.28' INSTEAD OF 203.28'  
CONTINUED NORTH VARIATION 4-15  
5314.32 SET STONE FOR CORNER OF 29,30,32,32 IN PLACE OF CORNER TREE  
AS SHOWN BY ROOTS
- 1965 BATTERMAN VOL 4 PG 240 FD CUT STONE. 8.5' NORTH & 2' EAST OF CENTER  
RD. REFERENCED SAME. 44.14 NE OF U.G.S. BM #1917. R/R SPIKES 6.00 TO  
THE NORTH & EAST.
- 1974 SHIMEALL #3244 1319.8 SOUTH TO 1/16TH COR  
1988 COMBS CSM 13 PG 371 2661.36 TO CENTER OF SEC 32  
1994 KREBS CSM 17 PG 275 2633.52 TO CENTER OF SEC 31

FD MAG NAIL & OLD R/R 0.3' DEEP WHICH WAS AN OLD SHORT TIE.

C) Was the corner restored through acceptance of (1) an obliterated evidence location, or, (2) a found perpetuated location?

ACCEPTED PERPETUATED LOCATION. LOCATION IS IN HARMONY WITH OLD TIES, WHICH WERE NOT DISTURBED.

D) Describe any material discrepancy between the location of the corner as restored or reestablished and the location of that corner as previously restored or reestablished by distance and direction. Show the discrepancy on the plan view drawing under (a), above. Show the distances between the corner as previously restored or reestablished and (1) the corner as restored or reestablished, and (2) to at least 4 of the witness monuments shown on the drawing in (a), above.

FD MAG NAIL WHICH IS WITHIN 0.07' OF COMPUTED POSITION. MAG NAIL IS AT INTERSECTION OF NW & NE REFERENCE PIPES.

(E) Was the corner reestablished through lost corner proportionate methods? If so, show the method, including the directions and distances to other public land survey corners used as evidence or used for proportioning the corner location.

I, Donald Barnes, hereby certify that the corner location as identified by the corner code index was determined by me under my direction and control and that this U.S. Public Land Survey Monument Record is correct and complete to the best of my knowledge and belief.

seal

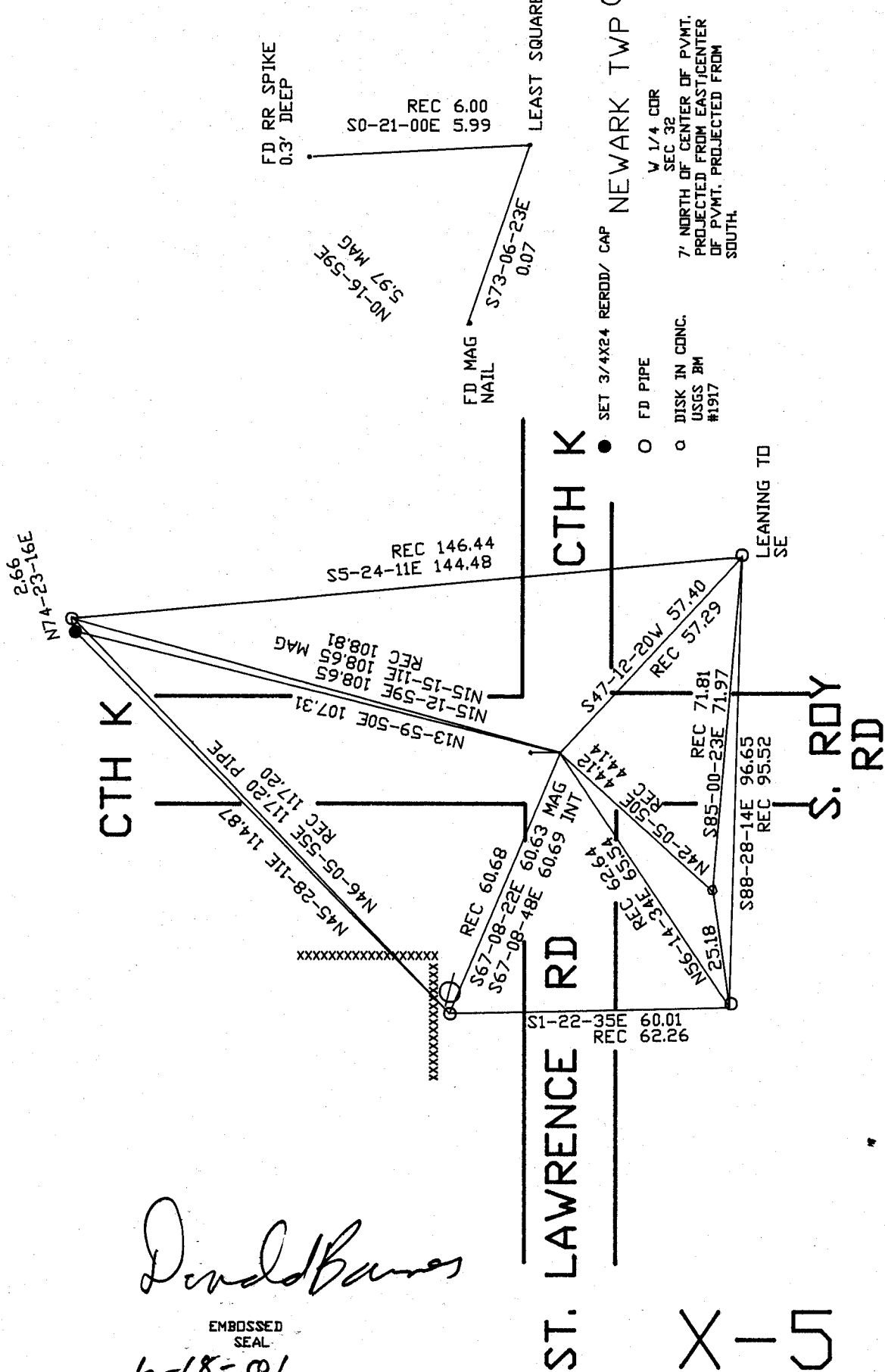
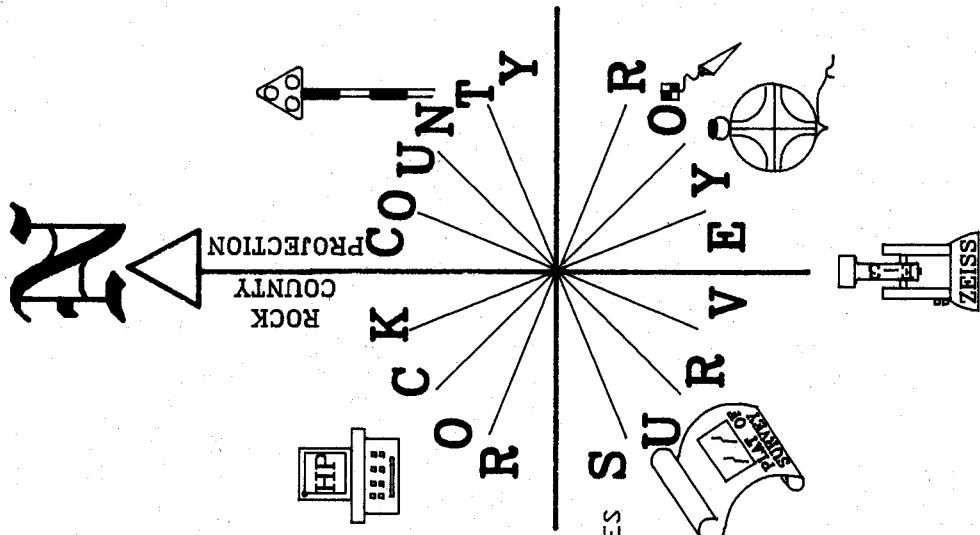
*Donald Barnes*

emboss

6-18-01

Number of included sheets 1

CORNER CODE X-5



*Dodd Barnes*

EMBOSSED SEAL  
6-18-01

X-5