

# U.S. PUBLIC LAND SURVEY MONUMENT RECORD

For Public Land Survey Corners in:

WI ADMINISTRATIVE CODE A-E 7.08 REQUIREMENT

T. 1 N., R. 11 E

### CORNER CODE INDEX

A	1	2	3	4	5	6	7	8	9	10	11	12	13	14	15	16	17	18	19	20	21	22	23	24	25
B	6																								
C	5																								
D																									
E																									
F	1																								
G		8																							
H			9																						
I				10																					
J					11																				
K						16																			
L	18						17																		
M								16																	
N									15																
O										14															
P											13														
Q												12													
R													11												
S														10											
T															9										
U																8									
V																	7								
W																		6							
X																			5						
Y																				4					
Z																					3				

NEWARK TWP  
ROCK COUNTY WI

IF AVAILABLE  
ROCK COUNTY COORDINATES PREFERRED

North \_\_\_\_\_ Elev. \_\_\_\_\_

East \_\_\_\_\_

Hor. Datum \_\_\_\_\_ Vert. Datum \_\_\_\_\_

LATITUDE \_\_\_\_\_ ELLIPS. HT. \_\_\_\_\_

LONGITUDE \_\_\_\_\_

GPS (X) \_\_\_\_\_ TRAVERSE (X) \_\_\_\_\_

BASED ON THE FOLLOWING CONTROL:

PLACE MONUMENT SYMBOL  AT PROPER LOCATION ON ABOVE INDEX

CORNER MONUMENT       WITNESS MONUMENT

(a)

BEARINGS ARE BASED ON:

FIELD BOOK \_\_\_\_\_ PAGE # \_\_\_\_\_

SHEET 1 OF 3

SHOW A PLAN VIEW DRAWING DEPICTING THE CORNER MONUMENT AND SURROUNDING PHYSICAL FEATURES, INCLUDING THE EXCAVATION AREA AND DEPTH.

PLANNING & ZONING COMMITTEE ADOPTED THE ABOVE FORM ON 12/2/1982

CORNER CODE V 5

NE603

(B) Describe any record evidence, monument evidence, occupational evidence, testimonial evidence or any other material evidence you considered, and whether the monument was found or placed.

- 1834 MILLER MARCH PG 31 WEST RANDOM BETWEEN SECS 30 & 31  
5016 ENTER MARSH S.E. 396' WIDE  
5364.48 INTERSECT RANGE LINE 12.54' SOUTH POST LAND LEVEL 2ND RATE  
TIMBER OAK & HICKORY  
\*WEST CORRECTED BETWEEN SECS 30 & 31  
SET POST TO COR OF 30 & 31 BUR OAK 14 S5E 168.3; BUR OAK 18 N88-  
30E { 5.33' OR 532.62' }  
652.74 BUR OAK 14 DIA  
2724.48 SET 1/4 SEC POST BUR OAK 10 S58E 50.82'; YELLOW OAK 22 IN N52W  
87.78'  
5364.48 SEC COR  
\* RANDOM & CORRECTION BOTH WEST?  
PG 32 NORTH BETWEEN SECS 29 & 30  
1478.4 BUR OAK 12  
2640 SET 1/4 SEC POST BUR OAK 20 S58E 23.1'; BUR OAK 12 N81W 8.58'  
4099.92 YELLOW 5 IN DIA  
5280 SET POST CORNER 19,20,29,30 WHITE 22 N67W 67.98, YELLOW OAK 6 S88-  
30E 47.52' LAND GENTLY ROLLING 2ND RATE SOIL SANDY TIMBER  
OAK & HICKORY  
PG 30 NORTH BETWEEN SECS 31 & 32  
1454.64 BUR OAK 10 IN DIA  
2640 SET 1/4 SEC POST BUR OAK 12 S14W 203.28'; BUR OAK 12 N63E 409.86'  
4290 LEAVE PRAIRIE  
5280 CORNER OF 29,30,31,32 A YELLOW OAK 20 IN DIAMETER  
LAND LEVEL 2ND RATE SANDY PRAIRIE WITH SOME SCATTERING  
TREES. MARCH 11, 1834  
PG 31 EAST RANDOM BETWEEN SECS 29 & 32  
5299.8 INTERSECT SEC LINE 5.94' NORTH POST LAND LEVEL 2ND RATE OAK &  
HICKORY TIMBER OAK & HAZEL U.G.  
WEST CORRECTED BETWEEN SECS 29 & 32  
531.3 BUR OAK 20  
2649.9 1/4 SEC POST BUR OAK 12 S10W 8.58'; BUR OAK 16 N43W 46.86'  
3464.34 WHITE OAK 22 IN DIA  
5045.7 BUR OAK 12 IN DIA  
5299.8 SEC CORNER  
1871 COLLINS REMONUMENTATION NOTES  
PG 188 NORTH BETWEEN 29 & 30 VARIATION 7-27  
2659.8 SET 1/4 STONE BY STUMPS OF WITNESS TREES. CONTINUED NORTH  
VARIATION 7-30  
5320.92 SET STONE FOR CORNER OF 19,20,29,30 IN PLACE OF STONE SET BY  
RUGER. AGREEING WITH WITNESS TREE AND STUMP. OCT 30 1871  
PG 200 EAST BETWEEN 30 & 31 VARIATION 5-45  
2766.72 SET 1/4 STONE BY ROOTS OF WITNESS TREES.  
CONTINUED EAST SAME VARIATION  
5405.4 SECTION CORNER  
PG 186 NORTH BETWEEN 31 & 32 VARIATION 5-15  
2641.32 SET 1/4 STONE BY LINE TREE AND STUMP OF WITNESS TREE  
AGREEING IN COURSE AND 137.28' INSTEAD OF 203.28'  
CONTINUED NORTH VARIATION 4-15  
5314.32 SET STONE FOR CORNER OF 29,30,32,32 IN PLACE OF CORNER TREE  
AS SHOWN BY ROOTS  
PG 187 EAST BETWEEN 29 & 32 VARIATION 7-30  
2686.2 INTERSECT 1/4 LINE 3.3' NORTH OF CORNER SET 1/4 STONE BY  
STUMPS OF WITNESS TREES CORRECTED VARIATION 7-34  
CONTINUED EAST VARIATION 7-30  
5350.62 SECTION CORNER {MY DISTANCES INDICATE THAT THIS DIRECTION  
MAY BE REVISED SINCE THE STONES WERE FD.} SHEET 1 OF 3

Donald Barnes  
6-21-01

V 5

- 1959 SHIMEALL #3230 2660.38 TO N 1/4 COR SEC 32  
 1959 SHIMEALL #3236 1319.50 FROM N 1/4 COR SEC 31 EAST TO 1/16 TH COR  
 1960 SHIMEALL #3250 1319.50 WEST TO 1/16TH COR  
 1962 BATTERMAN VOL 4 PG 65 FD BROKEN CUT STONE AT THE SEC COR SECTION 30-1-11. BOTTOM OF MON WAS IN-TACT. REFERENCED SAME.  
 1962 BATERMAN VOL 4 PG 209 FD BROKEN CUT STONE AT THE SEC COR SECTION 30-1-11. BOTTOM OF MON WAS IN-TACT. REFERENCED SAME.  
 1971 SHIMEALL #3235 1328.15 NORTH TO 1/16 TH COR  
 1991 ? #11560 1328.16 NORTH TO 1/16TH COR

FD 1/2" PIN 0.25' DEEP ON LINE WITH E/W CENTER LINE OF PVMT & 4.6' EAST OF N/S CENTER LINE OF PVMT. PIN IS IN HARMONY WITH NE & SW REFERENCE PIPES. BASED ON THE DISTANCE FROM THE INTERSECTION OF RECORD DISTANCES TO THE DESTROYED NW REFERENCE PIPE AND THE FOUND PIN, IT APPEARS THE RECORD DISTANCE TO THE SE REFERENCE PIPE MAY BE HAVE A BLUNDER OF A TENTH. THE RECORD DISTANCE OF "82.27" MIGHT ACTUALLY BE "82.17"

C) Was the corner restored through acceptance of (1) an obliterated evidence location, or, (2) a found perpetuated location?

ACCEPTED FOUND 1/2" PIN

D) Describe any material discrepancy between the location of the corner as restored or reestablished and the location of that corner as previously restored or reestablished by distance and direction. Show the discrepancy on the plan view drawing under (a), above. Show the distances between the corner as previously restored or reestablished and (1) the corner as restored or reestablished, and (2) to at least 4 of the witness monuments shown on the drawing in (a), above.

(E) Was the corner reestablished through lost corner proportionate methods? If so, show the method, including the directions and distances to other public land survey corners used as evidence or used for proportioning the corner location.

I, Donald Barnes, hereby certify that the corner location as identified by the corner code index was determined by me under my direction and control and that this U.S. Public Land Survey Monument Record is correct and complete to the best of my knowledge and belief.

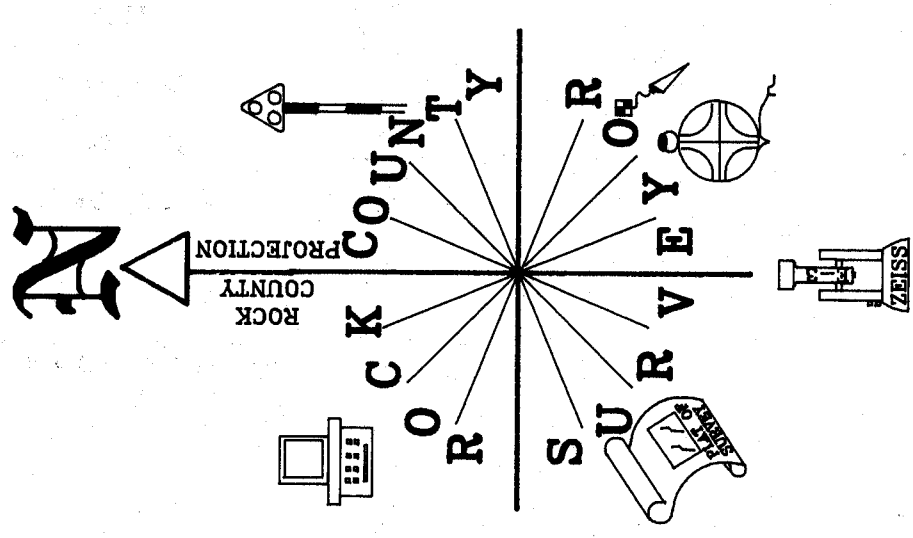
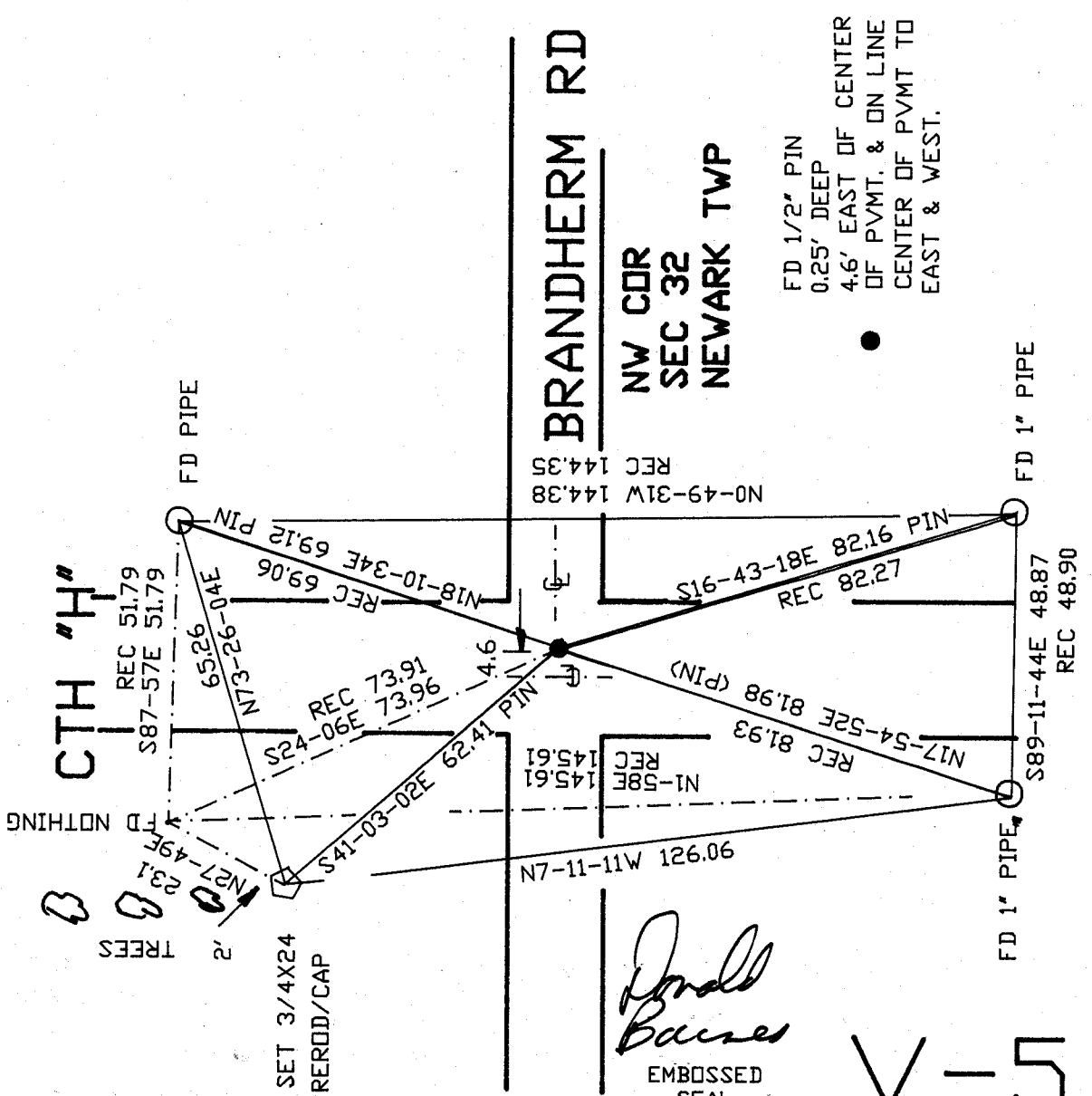
seal

SHEET 2 OF 3

emboss  
 Donald Barnes  
 6-21-01

CORNER CODE **V-5**

A-E 7.08 REQUIREMENT



OLD TIES VOL 4-65 & 4-209  
 OBSERVATION SHEET #1603

V-15