

U.S. PUBLIC LAND SURVEY MONUMENT RECORD

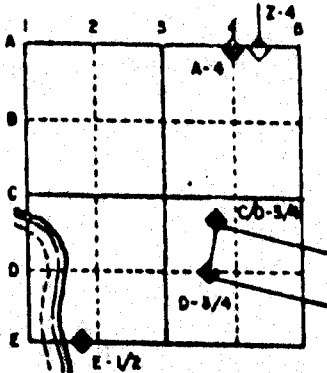
For Public Land Survey Corners in the
T. 1 N., R. 11 E.

CORNER CODE INDEX

	1	2	3	4	5	6	7	8	9	10	11	12	13	14	15	16	17	18	19	20	21	22	23	24	25
A																									
B																									
C	6																								
D		5																							
E			4																						
F				3																					
G					2																				
H	7																								
I		8																							
J			9																						
K				10																					
L					11																				
M						12																			
N	16																								
O		17																							
P			18																						
Q				19																					
R					20																				
S						21																			
T							22																		
U								23																	
V									24																
W	30																								
X		29																							
Y			28																						
Z				27																					
					26																				
						25																			
							24																		
								23																	
									22																
										21															
											20														
												19													
													18												
														17											
															16										
																15									
																	14								
																		13							
																			12						
																				11					
																					10				
																						9			
																							8		
																								7	
																									6
																									5
																									4
																									3
																									2
																									1

PLACE MONUMENT SYMBOL (◆) AT PROPER LOCATION ON ABOVE INDEX

EXAMPLE



NEWARK TWP
ROCK COUNTY WI

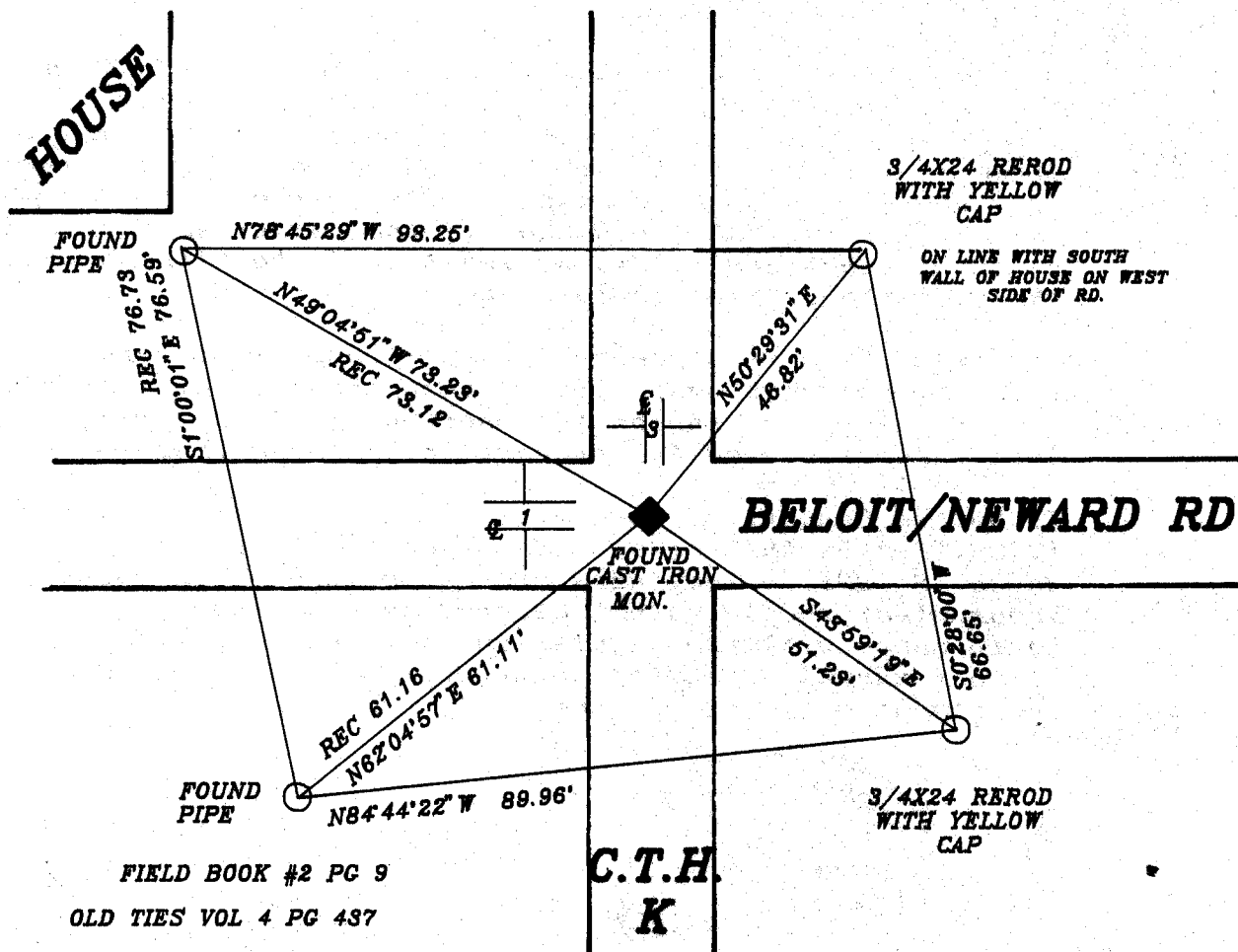
IF AVAILABLE
STATE PLANE COORDINATES

North (Y) _____ Elev. (Z) _____
 East (X) _____ Zone _____
 Hor. Datum _____ Vert. Datum _____

◆ CORNER MONUMENT

○ WITNESS MONUMENT

BEARINGS ARE BASED ON: ASSUMED



MICROFILMED

SHEET _____ OF _____

CORNER CODE: NS

(B) Describe any record evidence, monument evidence, occupational evidence, testimonial evidence or any other material evidence you considered, and whether the monument was found or placed.

- 1834 MILLER ORIG SURVEYOR SET POST COR SECTIONS 17,18,19,20 YEL O 10 N78E 100.32, BUR O 20 S44W 69.3. CALLS FOR 2640 TO E 1/4 COR SEC 19 AND E 1/4 COR SEC 18, 2636.70 TO S 1/4 COR SEC 17 AND 2640 TO S 1/4 COR SEC 18.
- 1870 RUGER VOL 2 PG 42 FOUND OLD STAKE, ALSO FOUND STUMP OF SW BT & WHERE STUMPS OF NE BT HAD BEEN DUG UP. SET L.S. 19X10X40 SURROUNDED BY 3 L.S. CALLS FOR 2653.20 TO E 1/4 COR SECT 19 AND 2647.04 TO N 1/4 COR SEC 19.
- 1871 COLLINS REMONUMENTATION PROJECT. NORTH BETWEEN SEC 19&20. INTERSECTED SECTION LINE 9.24' WEST OF CORNER. SET STONE FOR CORNER OF SEC 17,18,19,20 IN PLACE OF STONE SET BY RUGER. AGREEING WITH ROOTS OF WITNESS TREES. CORRECT VAR 5-42. CALLS FOR 2657.82 TO E 1/4 COR SEC 19, 2651.88 TO N 1/4 COR SEC 19, 2638.02 TO N 1/4 COR SEC 20, AND 2663.76 TO W 1/4 COR SEC 17.
- 1937 SUNNY VOL 3 PG 358 FOUND STONE 6X6. SET 1 1/2X12" CAPPED PIPE ON TOP. REFERENCED CORNER.
- 1958 SHIMEALL MAP #3178. PIPE OVER STONE. CALLS FOR AN ANGLE OF 88-50 FROM THE W 1/4 TO S 1/4 CORNERS OF SEC 17 AT THE SW CORNER OF SECTION 17.
- 1970 BATTERMAN JR. VOL 4 PG 437 CTH "K" UNDER CONSTRUCTION. CORNERS TO BE RESET. REFERENCED CORNER.
- 1977 PHILLIPSON CSM VOL 6 PG 288. TIED INTO IT BUT STATES NOTHING ABOUT THE CORNER.
- 1989 BARNES VOL 6 PG 401 FOUND CAST IRON MON. CALLS FOR 2651.09 TO S 1/4 COR SEC 17, 2659.05 TO E 1/4 COR SEC 19, 2666.32 TO W 1/4 COR SEC 17, AND AN ANGLE OF 89-00-23 FROM THE W 1/4 COR TO THE S 1/4 COR OF SEC 17 AT THE SW COR OF SEC 17.

FOUND CAST IRON MONUMENT.

C) Was the corner restored through acceptance of (1) an obliterated evidence location, or, (2) a found perpetuated location?

ACCEPTED FOUND MONUMENT.

D) Describe any material discrepancy between the location of the corner as restored or reestablished and the location of that corner as previously restored or reestablished by distance and direction. Show the discrepancy on the plan view drawing under (a), above. Show the distances between the corner as previously restored or reestablished and (1) the corner as restored or reestablished, and (2) to at least 4 of the witness monuments shown on the drawing in (a), above.

(E) Was the corner reestablished through lost corner proportionate methods? If so, show the method, including the directions and distances to other public land survey corners used as evidence or used for proportioning the corner location.

I, Donald Barnes, hereby certify that the corner points as identified by the corner code index were, in a field survey on, March 19 1992, established, re-established, monumented, re-monumented, recovered or restored as expressed below and in conformance with the regulations and rules as required in the current manual of survey instructions of the United States Department of Interior, Bureau of Land Management.



AFFIX YOUR LAND SURVEYOR SEAL

COUNTY SURVEYOR FILING DATA

Date of computer entry _____

Date microfilmed _____

Number of included sheets _____
CORNER CODE

N5