

U.S. PUBLIC LAND SURVEY MONUMENT RECORD

For Public Land Survey Corners in:

WI ADMINISTRATIVE CODE A-E 7.08 REQUIREMENT

T. 1 N., R. 11 E

CORNER CODE INDEX

A	2	3	4	5	6	7	8	9	10	11	12	13	14	15	16	17	18	19	20	21	22	23	24	25
B	6																							
C		5																						
D																								
E																								
F	1																							
G		8																						
H																								
I																								
J																								
K																								
L	18																							
M		11																						
N																								
O																								
P	19																							
Q		20																						
R																								
S																								
T	30																							
U		29																						
V																								
W																								
X	31																							
Y		32																						
Z																								

NEWARK TWP
ROCK COUNTY WI

IF AVAILABLE
ROCK COUNTY COORDINATES PREFERRED

North _____ Elev. _____

East _____

Hor. Datum _____ Vert. Datum _____

LATITUDE _____ ELLIPS. HT. _____

LONGITUDE _____

GPS (X) _____ TRAVERSE (X) _____

BASED ON THE FOLLOWING CONTROL:

PLACE MONUMENT SYMBOL  AT PROPER LOCATION ON ABOVE INDEX

 CORNER MONUMENT

 WITNESS MONUMENT

(a)

BEARINGS ARE BASED ON:

FIELD BOOK _____ PAGE # _____

SHEET 1 OF 2

SHOW A PLAN VIEW DRAWING DEPICTING THE CORNER MONUMENT AND SURROUNDING PHYSICAL FEATURES, INCLUDING THE EXCAVATION AREA AND DEPTH.

PLANNING & ZONING COMMITTEE ADOPTED THE ABOVE FORM ON 12/2/1982

CORNER CODE J-15

NE548 S1/4SEC10

(B) Describe any record evidence, monument evidence, occupational evidence, testimonial evidence or any other material evidence you considered, and whether the monument was found or placed.

- 1834 MILLER PG 23 EAST RANDOM BETWEEN SECS 10 & 15
4950 ENTER PRAIRIE
5303.1 INTERSECT SEC LINE 4.62' NORTH POST
2651.22 SET 1/4 SEC POST BUR OAK 12 S9W 72.6'; WHITE OAK 14 N56W 86.46'
3290.76 WHITE OAK 18 IN DIAMETER
5303.1 SEC CORNER LAND GENTLY ROLLING 2ND RATE, TIMBER OAK & HICKORY, SCATTERING
- 1871 COLLINS REMONUMENTATION NOTES
PG 169 WEST BETWEEN 10 & 15 VARIATION 3
2659.14 SET 1/4 STONE (UNDER BRIDGE) BY WITNESS TREE
CONTINUED WEST SAME VARIATION
5345.34 SECTION CORNER
COLLINS REMONUMENTATION MAP. 2659.14 VAR 3 FROM SW TO S 1/4 COR SEC 10 & S 1/4 COR TO SE COR SEC 10 2686.2 VAR 3. VAR INDICATES 1/4 COR IS ON LINE.
- 1965 BATTERMAN VOL 4 PG 219 DUG 20X16X3. FD NOTHING. (NO DIAGRAM).
- 1973 LEE CSM 3 PG 163 ANGLE OF 86-40-15 @ S 1/4 COR SEC 10 FROM SW TO N 1/4 CORNERS OF SEC 10 & 2668.50 TO SW COR SEC 10
- 1973 LEE CSM 3 PG 163 2668.50 TO SW COR SEC 10
- 1996 LEUENBERGER CSM 19 PG 393 1334.3 FROM SW COR SEC 10 TO S 1/16TH COR OF SW 1/4 SEC 10.

FD 1" PIPE 1.5' SOUTH OF CENTER OF PVMT. & REFERENCE TIES. SINCE PIPE WAS 13.7' WEST OF COLLIN'S PRORATED DISTANCE & THE N/S FENCE, I EXCAVATED FOR THE STONE. AT 5.5' DEEP I FD A 6"X3"X22" PIECE OF THE CUT LIMESTONE LYING HORIZONTALLY IN THE BOTTOM OF THE WEST CONCRETE WALL OF AN ABANDONED CONCRETE BRIDGE. THE STONE HAD THIN DIRT LAYER AROUND THE EAST AND WEST SIDES AND THERE WAS A DIRT LAYER BELOW THE STONE. I SURMISE THE OLD BRIDGE THAT WAS CALLED FOR IN COLLIN'S FIELD NOTES WAS REPLACED WITH THE CONCRETE BRIDGE. INSTEAD OF DIGGING HOLES FOR EACH WALL OF THE CONCRETE BRIDGE THEY USED THE EXISTING ABANDONED WOOD BRIDGE HOLE AND WHEN THEY ENCOUNTERED THE CUT LIMESTONE THEY JUST POURED CONCRETE AROUND IT. ALSO I FOUND A LOT OF BARB WIRE IN THE HOLE.

C) Was the corner restored through acceptance of (1) an obliterated evidence location, or, (2) a found perpetuated location?

ACCEPTED THE FOUND CUT LIMESTONE, WHICH IS IN HARMONY WITH COLLIN'S REMONUMENTATION DISTANCES AND THE CALL TO A BRIDGE AND THE N/S FENCE LINE.

D) Describe any material discrepancy between the location of the corner as restored or reestablished and the location of that corner as previously restored or reestablished by distance and direction. Show the discrepancy on the plan view drawing under (a), above. Show the distances between the corner as previously restored or reestablished and (1) the corner as restored or reestablished, and (2) to at least 4 of the witness monuments shown on the drawing in (a), above.

THE FOUND PIPE IS ON AT SINGLE PROPORTIONATE DISTANCE WITH THE ORIGINAL GOVERNMENT MEASUREMENTS. THE RECORDS INDICATE THE PIPE WAS PROBABLY SET BY THE FORMER COUNTY SURVEYOR.

(E) Was the corner reestablished through lost corner proportionate methods? If so, show the method, including the directions and distances to other public land survey corners used as evidence or used for proportioning the corner location.

I, Donald Barnes, hereby certify that the corner location as identified by the corner code index was determined by me under my direction and control and that this U.S. Public Land Survey Monument Record is correct and complete to the best of my knowledge and belief.

seal

Number of included sheets 1

2111033
Donald Barnes
6-28-01

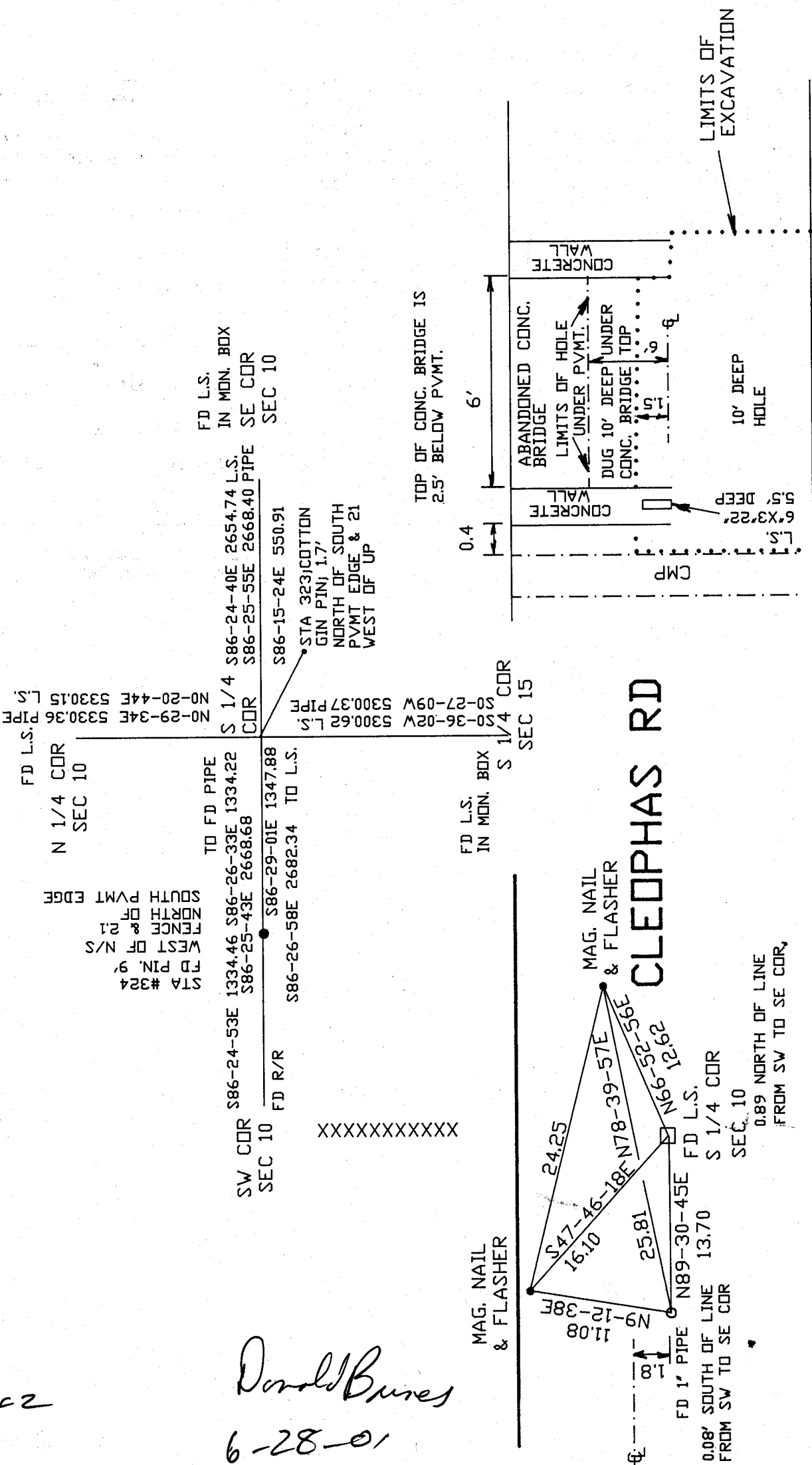
CORNER CODE J-15

20F2

Donald Bures
6-28-01

EMBOSSED SEAL

J-15

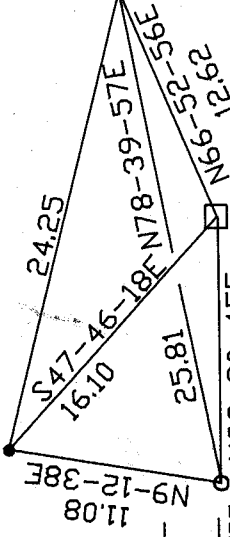


CLEOPHAS RD

MAG. NAIL & FLASHER

MAG. NAIL & FLASHER

0.08' SOUTH OF LINE FROM SW TO SE COR
0.89' NORTH OF LINE FROM SW TO SE COR



STA #324
FD PIN, 9'
WEST OF N/S
FENCE & 21
NORTH OF
SOUTH PVMT EDGE

N 1/4 COR SEC 10
FD L.S.
NO-29-34E S330.36 PIPE
NO-20-44E S330.15 L.S.

SW COR SEC 10
S86-24-53E 1334.46 S86-26-33E 1334.22 S86-25-43E 2668.68
TO FD PIPE
FD R/R
S86-29-01E 1347.88 S86-26-58E 2682.34 TO L.S.

S 1/4 COR SEC 15
FD L.S.
S86-36-02W S300.62 L.S.
S86-27-09W S300.37 PIPE
S86-15-24E 550.91

STA 323; COTTON GIN PIN; 1.7' NORTH OF SOUTH PVMT EDGE & 21 WEST OF UP

TOP OF CONC. BRIDGE IS 2.5' BELOW PVMT.

6'

0.4

S 1/4 COR SEC 15

FD L.S. IN MON. BOX

FD L.S. S 1/4 COR SEC 10

FD L.S. S 1/4 COR SEC 10

FD 1' PIPE N89-30-45E 13.70 FROM SW TO SE COR

0.08' SOUTH OF LINE FROM SW TO SE COR

0.89' NORTH OF LINE FROM SW TO SE COR