



ROCK COUNTY DEPARTMENT OF PUBLIC WORKS

Airport - Highways - Parks

3715 Newville Road, Janesville, WI 53545

Phone: (608)757-5450 Fax: (608)757-5470

www.co.rock.wi.us

A G E N D A

Ad Hoc Committee on Airport Future

Thursday, March 29, 2018 at 7:30 a.m.

Southern Wisconsin Regional Airport – Voyager Room

1716 W. Airport Rd.

Janesville, WI 53546

1. Call to Order – Brent Fox, Chair
2. Approval of Agenda
3. Citizen Participation, Communications, and Announcements
4. Review & Approve February 26, 2018 Minutes
5. Discussion on Future Meeting Schedule
6. Review of Background Information:
 - a. Common Airport acronyms & definitions
 - b. Federal & State Capital Projects
 - c. Runway Protection Zone & Ultimate Runway Protection Zone
 - d. Governance – Staffing of Other WI. Airports
 - e. Part 139 Certification
 - f. Comparable Airport Information
7. Timeline on Economic Impact Study
8. What is Missing - Next Steps
9. Next Meeting Date
10. Adjournment

1716 W. Airport Rd., Suite 100, Janesville, WI 53546

Phone: 608-757-5768 Fax: 608-758-3060

E-Mail: info@jvlairport.com Web: www.jvlairport.com

COMMON AIRPORT ACRONYMS AND DEFINITIONS

ACIP – Airport Capital Improvement Plan - is that portion of the NPIAS that provides additional details including the anticipated sources of funds for specific developments that are expected to be undertaken within the next 3 to 5 years and are considered likely to be funded through the Airport Improvement Program. In addition to the ACIP, airport operators also have their own Capital Improvement Plans that usually extend 5 to 6 years out, but include not just projects eligible for federal funding, but also projects that are funded by state grants, operational revenues, bonds, or other means.

AIP – Airport Improvement Program – project list where federal funds come from to pay for capital improvements

ALP – Airport Layout Plan – FAA approved document used as prerequisite to the granting of AIP funds for airport development. Reflects design standards and acts as an agreement between the FAA and the sponsor regarding the proposed allocation of airport areas to specific operational and support functions.

ARFF – Aircraft Rescue and Fire Fighting – refers to equipment or training required under Part 139.

ATC – Air Traffic Control

BOA – Bureau of Aeronautics – State agency that assists the airport with guidance, project management and financial support.

Concurrent Use – is a request to the FAA to use obligated airport property for a non-aeronautical use while it still serves its primary aeronautical purpose. Concurrent use is intended to be used when the property is still recoverable in the short term for aeronautical use. I.e., farming with a short-term lease agreement would be considered a concurrent use.

FAA – Federal Aviation Administration – Federal agency that sets standards, enforces rules and procedure and has overall responsibility for safe and efficient flow of air traffic control.

FBO – Fixed Base Operator – Janesville Jet sells gas and Jet fuel as private business to our airport.

GA – General Aviation – GA Airport=public use airports that do not have scheduled service or have less than 2,500 annual passenger enplanements.

Grant Assurances - When airport owners or sponsors, planning agencies, or other organizations accept funds from FAA-administered airport financial assistance programs, they must agree to certain obligations (or assurances). These obligations require the recipients to maintain and operate their facilities safely and efficiently and in accordance with specified conditions. The assurances may be attached to the application or the grant for Federal assistance and become part of the final grant offer or in restrictive covenants to property deeds. The duration of these

obligations depends on the type of recipient, the useful life of the facility being developed, and other conditions stipulated in the assurances.

IFR – instrument flight rules – qualified pilots use these rules to fly through clouds and follow specific routes and approaches in/out of airports

ILS – Instrument Landing System – is a precision approach to help a pilot in bad weather find the runway; using left/right & too high/low guidance; offers the lowest minimums to our airport meaning as long as the pilot has at least ½ mile visibility and 200' from the ground to base of clouds, the pilot can land. Otherwise, the pilot would have to go elsewhere.

Land Release – is a request to the FAA to fully remove all federal obligation from a piece of property in order to sell it. The land release process can take anywhere from a few months to a few years.

NAS – National Airspace System – through our frequencies and navigational aids pilots use at our airport, we are part of the overall network.

NPIAS - National Plan of Integrated Airport Systems – this creates airport classification system and they create reports to identify federal funding

Part 91 – commonly associated with GA operations; operating under general operating flight rules and used to describe a private flight.

Part 121 – certification needed for scheduled commercial aircraft operators (United, Delta, American, etc)

Part 135 – Commuter and on demand, unscheduled commercial, operating requirements (charter like SC Aviation)

Part 139 – certification of commercial service airports

Part 380 – Public charter certificate, such as, when an airline leases a plane to a resort company like Apple Vacations to use the plane to fly their members to a destination. They are required to operate to and from Part 139 airports.

RPZ – Runway Protection Zone - is an existing trapezoidal-shaped area located off the runway ends, designed to enhance the protection of people and property on the ground. It lies under the innermost portion of the runway's approach surface and is required to be under the control of the airport (through ownership or by easement). The RPZ begins 200 feet from the end of a runway area that is usable for takeoff or landing. The FAA recommends fee simple ownership (i.e., outright acquisition of the property) and complete land use control of the RPZ. It may, however, be impracticable for the airport owner to acquire and plan the land uses within the entire RPZ. The overall size of the zone varies with the Design Aircraft and approach visibility minimums used for a particular runway. It can vary in length from 1,000 feet to 2,500 feet. The smallest width of the trapezoid is the same as that of the primary surface area. It then widens as it moves

from the runway end into the approach area. Clearing all objects from the RPZ is desirable, but some uses are permitted, provided they do not attract wildlife. Some land uses, such as golf courses and agricultural operations are allowed, while others, such as churches, schools, hospitals, shopping centers, and fueling facilities, are expressly prohibited.

RSA – Runway Safe Area - is a defined area comprising either a runway or a taxiway and the surrounding surfaces, areas that are prepared for, or are suitable for, reducing the risk of damage to airplanes in the event of an undershoot, overshoot, or excursion from the runway or the unintentional departure from a taxiway. This safety area must be maintained so that it is clear of debris, drained, and graded, as it must be able to support aircraft in the event that they depart from the pavement. Safety Areas are also designed to support snow removal, aircraft rescue, and firefighting operations under normal conditions. The safety area includes the runway's structural pavement, shoulders, blast pad, and stop ways.

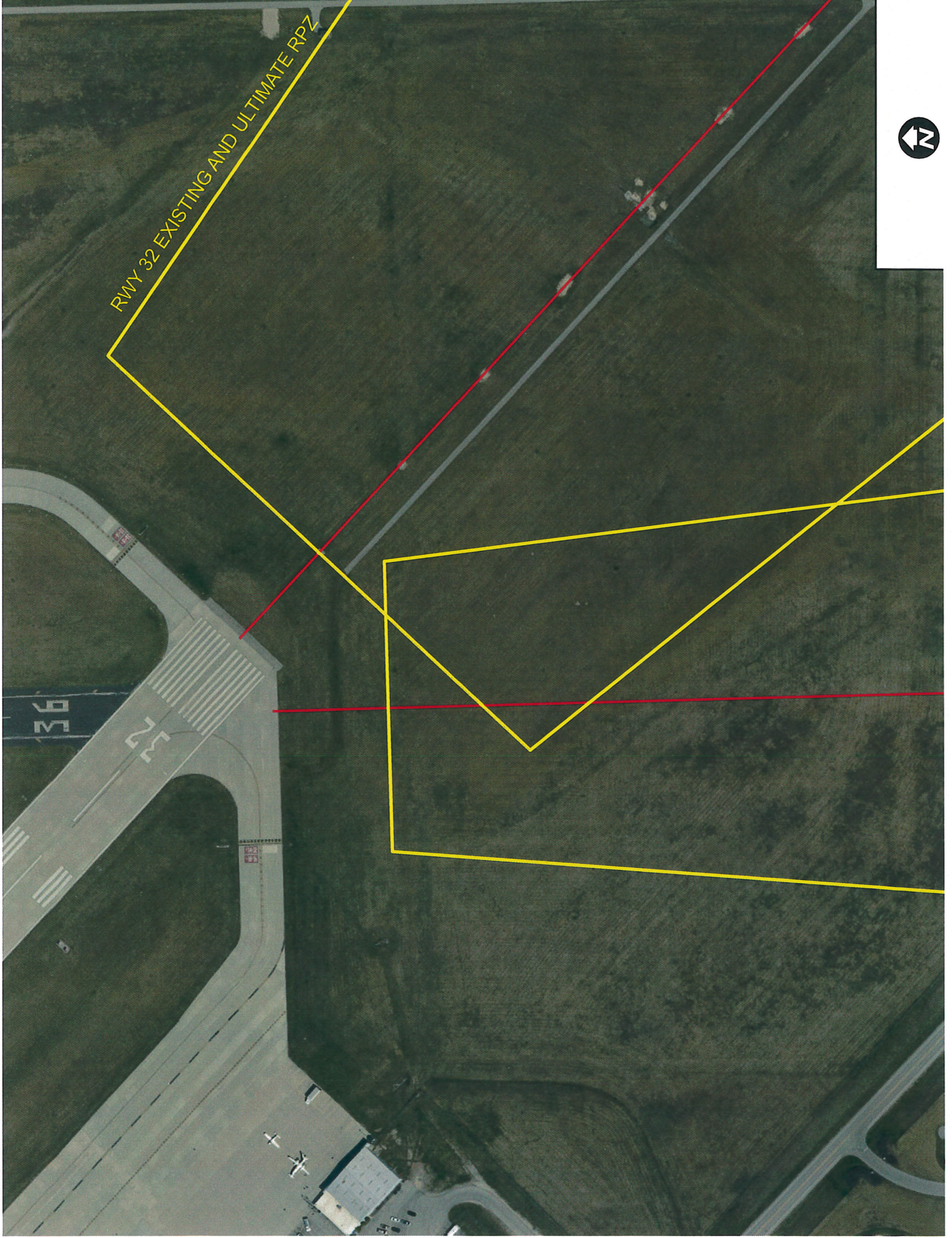
URPZ – Ultimate Runway Protection Zone – is future or ultimately planning how an airport wants to protect their RPZ area. The ALP would depict this area to show future plans for runway expansion, creating a new precision approach that would lower minimum weather standards, protecting from encroachment of obstacles that could interfere with navigational signals or other. The dimensions would be similar design to the RPZ.

VFR – visual flight rules – pilots fly clear of clouds and often use ground based geographic points to navigate.

PROJECT ID	Project Name	Project Finding	Project Closed	Sponsor Funds	State Funds	Federal Funds	Total Funds
AIP 08	Concrete Cargo Apron	July 1994	January 2000	\$28,771.43	\$28,771.43	\$517,885.00	\$575,427.86
AIP 09	Reconstruct Bituminous Aprons and Taxiways	September 1994	March 2000	\$26,124.87	\$26,124.87	\$470,246.92	\$522,496.66
AIP 10	Relight Runways/Taxiways, Security Fencing	August 1996	October 1999	\$57,388.61	\$57,388.61	\$791,389.00	\$906,166.22
AIP 11	Reconstruct Terminal & Cargo Aprons	May 1997	September 2002	\$213,465.80	\$213,465.79	\$640,395.00	\$1,067,326.59
AIP 12	Repair Runway 4/22	May 1998	March 2003	\$81,447.02	\$81,447.02	\$244,405.00	\$407,299.04
AIP 13	Install Deer Fence	August 2001	October 2003	\$127,872.49	\$127,872.48	\$383,615.00	\$639,359.97
AIP 14	Construct Perimeter Road	April 2001	December 2006	\$57,334.98	\$57,334.98	\$160,906.00	\$275,575.96
AIP 15	Environmental Assessment, Land Acquisition and Design for Extension & Strengthening of Runway 13/31 and Parallel Taxiway w/ ILS	September 2001	January 2007	\$392,000.00	\$392,000.00	\$1,176,000.00	\$1,960,000.00
AIP 16	Snow Removal Equipment	March 2002	January 2007	\$12,579.82	\$12,579.82	\$226,432.00	\$251,591.64
AIP 17	Land Acquisition for Runway 13/31 Extension	September 2001	January 2002	\$108,000.00	\$108,000.00	\$324,000.00	\$540,000.00
AIP 18	Extend & Strengthen Runway 13/31 & Parallel Taxiway w/ ILS	March 2002	January 2007	\$1,800,000.00	\$1,800,000.00	\$5,400,000.00	\$9,000,000.00
AIP 19	Land Acquisition Parcel 42 (Shelby)	June 2005	October 2005	\$85,088.21	\$85,088.20	\$255,264.00	\$425,440.41
AIP 20	Extend & Strengthen Runway 13/31 & Parallel Taxiway w/ ILS	September 2002	December 2006	\$444,939.68	\$444,939.67	\$1,334,302.00	\$2,224,181.35
AIP 22	Construct Sand Storage Building	June 2004	December 2007	\$16,060.57	\$16,060.56	\$361,866.00	\$393,987.13
AIP 23	Construct Northside Dev Area, Reconstruct North Twy A, Construct Twy C to D1	November 2003	December 2006	\$209,065.40	\$209,065.40	\$627,196.00	\$1,045,326.80
AIP 24	Reconstruct Wings Apron	May 2005	October 2009	\$59,549.51	\$59,549.51	\$1,612,078.00	\$1,731,177.02
AIP 25	Purchase De-icing Vehicle	July 2007	February 2009	\$5,499.01	\$5,499.00	\$208,958.00	\$219,956.01
AIP 26	Construct T-hangar Development and Obliterate T-hangars	August 2008	September 2010	\$18,564.72	\$18,564.71	\$705,444.00	\$742,573.43
AIP 27	Construct Taxiway D	June 2008	July 2013	\$54,037.47	\$54,037.46	\$2,031,688.00	\$2,139,762.93
AIP 28	Reconstruct SE Terminal Apron Area, Design Twy A (south), Develop Wildlife Hazard Study	February 2009	July 2013	\$22,054.16	\$22,054.16	\$838,039.00	\$882,147.32
AIP 29	Reconstruct Taxiway A (south), Apron, Crack Repair, Guard Lights, Sign Panels	August 2011	OPEN	\$30,000.00	\$30,000.00	\$1,143,000.00	\$1,203,000.00
AIP 30	Runway 14/32 & Twy B Concrete Joint Repairs & Sealing	May 2013	OPEN	\$32,250.00	\$32,250.00	\$580,000.00	\$644,500.00
AIP 31	Land Reimbursement (Parcel 41)	June 2013	OPEN	\$19,200.00	\$19,200.00	\$345,600.00	\$384,000.00
AIP 32	Land Reimbursement (Parcel 40)	April 2015	June 2015	\$16,900.00	\$16,900.00	\$304,200.00	\$338,000.00
AIP 33	Construct Perimeter Roads	September 2014	OPEN	\$91,500.00	\$91,500.00	\$864,000.00	\$1,047,000.00
AIP 34	Land Reimbursement (Parcels 39, 41), Sign & Building Removals and Misc Land Expenses	September 2015	OPEN	\$14,900.00	\$14,900.00	\$173,250.00	\$203,050.00
AIP 35	Runway Lighting Rehab	June 2016	OPEN	\$63,330.00	\$63,330.00	\$1,140,000.00	\$1,266,660.00
AIP 36	Land Reimbursement (Parcel 39)	September 2016	OPEN	\$20,210.00	\$20,210.00	\$363,780.00	\$404,200.00
AIP 37	Purchase ARFF Vehicle & Equipment	September 2017	OPEN	\$38,000.00	\$38,000.00	\$684,000.00	\$760,000.00
TOTALS				\$4,146,133.75	\$4,146,133.67	\$23,907,938.92	\$32,200,206.34

PROJECT ID	Project Name	Project Finding	Project Closed	Sponsor Funds	State Funds	Federal Funds	Total Funds
State Aid 54	Recon & Sealcoat Ramp Areas & Twys, Construct T-hangar Twys & Lighting	August 1996	February 1999	\$130,988.15	\$523,952.60		\$654,940.75
State Aid 55	Update Master Plan and Recon Terminal Auto Parking Lot	January 1999	May 2001	\$132,749.96	\$207,298.49		\$340,048.45
State Aid 58	Rehab/overlay Rwy 4/22 and Twys, Design Storage Building	December 2002	December 2006	\$367,972.20	\$1,471,888.79		\$1,839,860.99
State Aid 59	Design & Recon Wings Parking Lot	May 2005	June 2010	\$20,199.65	\$80,798.61		\$100,998.26
State Aid 60	Terminal Building	April 2005	September 2008	\$10,871.67	\$10,871.66		\$21,743.33
State Aid 62	Crack Sealing Rwy 4/22	October 2005	January 2006	\$3,454.30	\$13,817.18		\$17,271.48
State Aid 63	Recon Entrance Road, Design Engineering Twy D, Obliterate T-hangars, T-hangar Dev Area	August 2007	September 2009	\$107,410.82	\$429,643.27		\$537,054.09
State Aid 64	Reimbursement of Adopted Land Use Ordinance	August 2009	January 2010	\$16,918.55	\$67,674.22		\$84,592.77
State Aid 65	SRE, Design Terminal, Maintenance Bldg, Security & Landscaping	January 2010	July 2015	\$172,000.00	\$688,000.00		\$853,900.83
State Aid 66	Land Loan Parcels 39-41	May 2010	OPEN		Reimbursed with Federal Funds		
State Aid 67	Crack Sealing Rwy 4/22	August 2010	May 2011	\$4,014.66	\$16,058.63		\$20,073.29
State Aid 68	Replace Rotating Beacon	June 2011	January 2011	\$0.00	\$7,873.81		\$7,873.81
State Aid 69	West Side Terminal Building Expansion	April 2014	OPEN	\$280,110.00	\$1,120,440.00		\$1,400,550.00
State Aid 70	East Side Terminal Building Expansion	June 2013	OPEN	\$261,805.00	\$994,165.00		\$1,255,970.00
State Aid 71	Terminal Interior Renovations	May 2014	OPEN	\$301,295.00	\$787,825.00		\$1,089,120.00
State Aid 72	Reconstruct Terminal Parking Lot	March 2015	OPEN	\$106,660.00	\$426,640.00		\$533,300.00
State Aid 73	Taxiway Lighting Replacement	July 2017	OPEN	\$190,000.00	\$760,000.00		\$950,000.00
State Aid 92	2012 State Sealcoat	April 2012	September 2014	\$64,189.53	\$256,758.10		\$320,947.63
TOTALS				\$2,170,639.49	\$7,863,705.36		\$10,028,245.68

RWY 32 EXISTING AND ULTIMATE RPZ



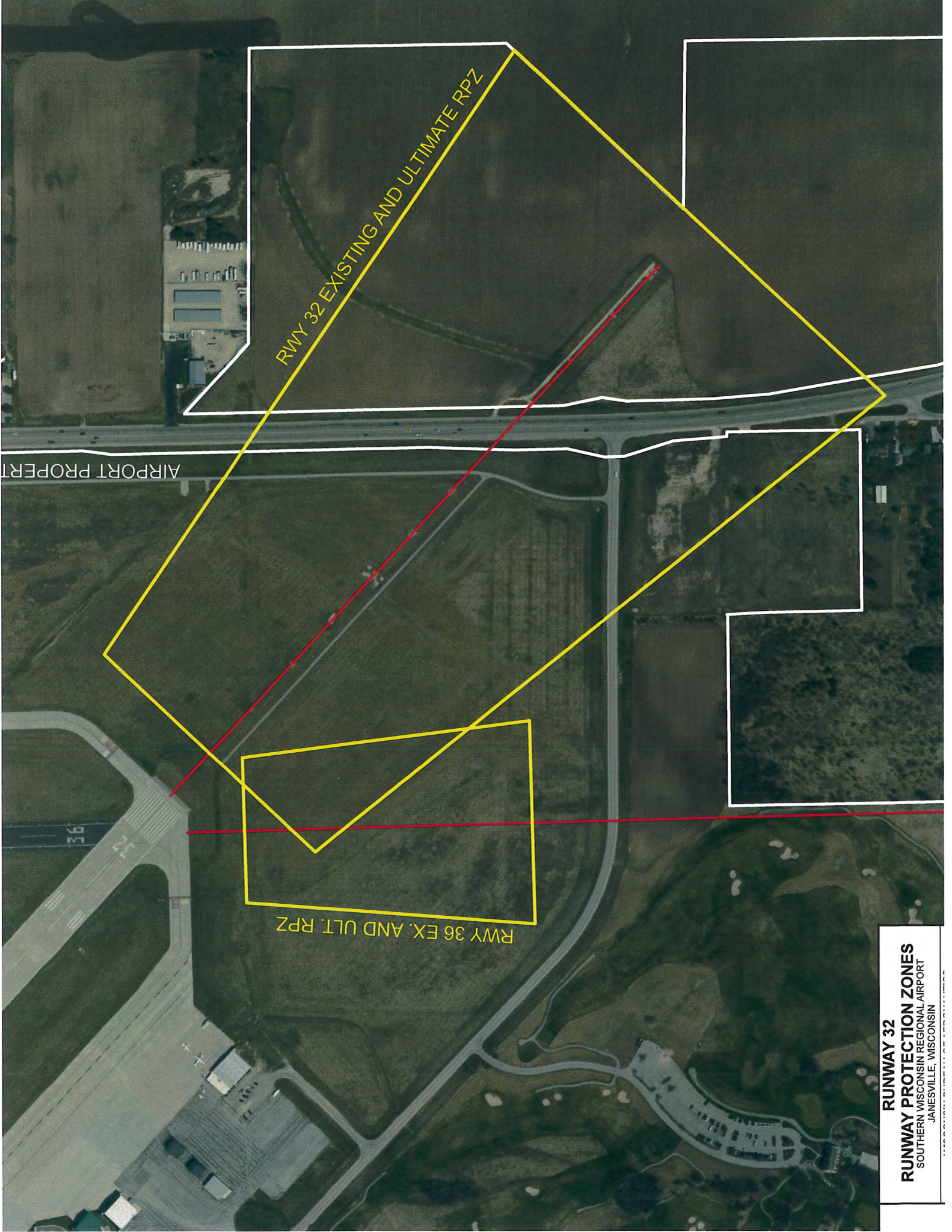
RWY 18 EXISTING AND ULTIMATE RPZ

AIRPORT PROPERTY LINE

EXISTING AND ULTIMATE RPZ

RUNWAY 18
RUNWAY PROTECTION ZONES
SOUTHERN WISCONSIN REGIONAL AIRPORT
JANESVILLE, WISCONSIN

WISCONSIN DEPARTMENT OF TRANSPORTATION

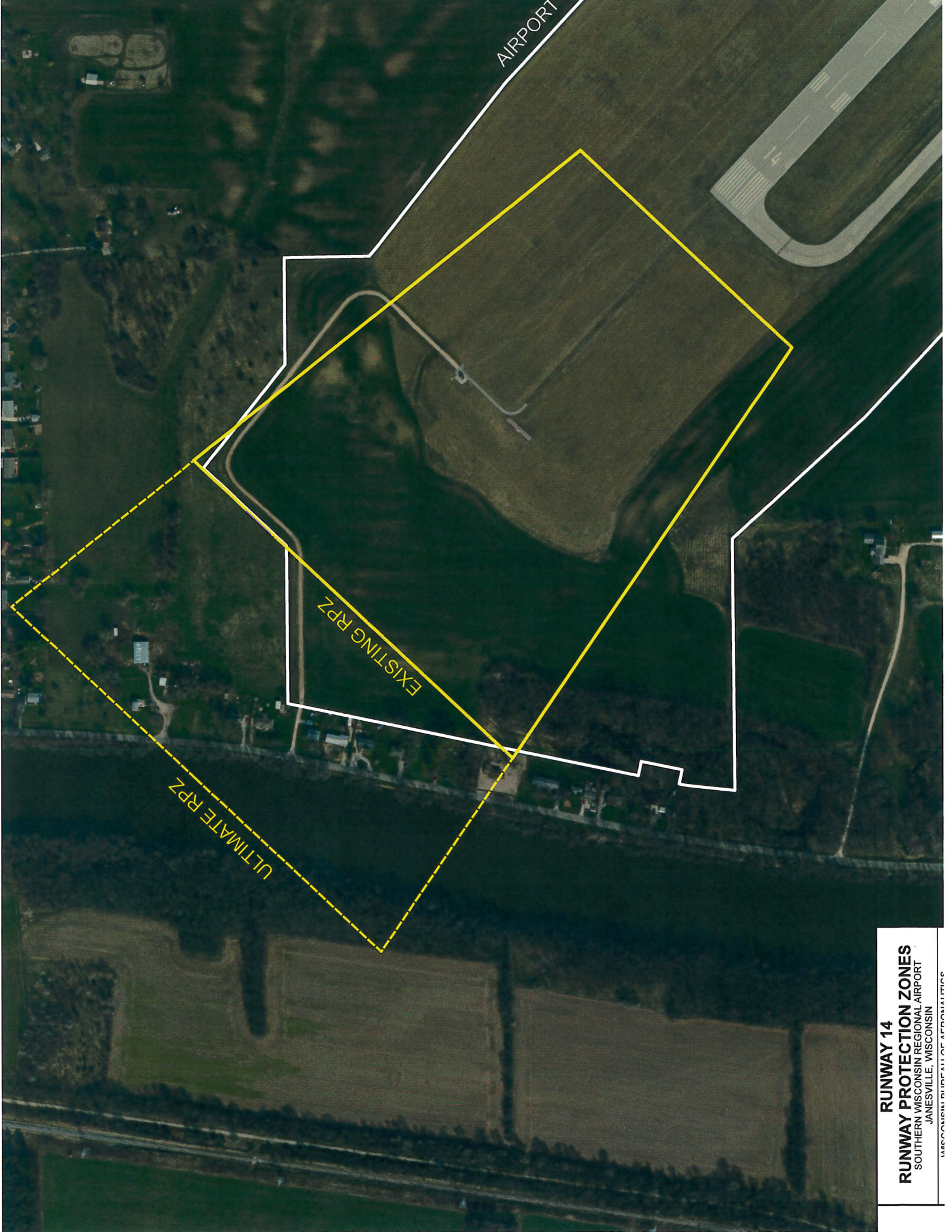


RWY 32 EXISTING AND ULTIMATE RPZ

RWY 36 EX. AND ULT. RPZ

AIRPORT PROPERTY

RUNWAY 32
RUNWAY PROTECTION ZONES
SOUTHERN WISCONSIN REGIONAL AIRPORT
JANESVILLE, WISCONSIN



AIRPORT

EXISTING RPZ

ULTIMATE RPZ

RUNWAY 14
RUNWAY PROTECTION ZONES
SOUTHERN WISCONSIN REGIONAL AIRPORT
JANESVILLE, WISCONSIN
WISCONSIN DEPARTMENT OF TRANSPORTATION



EXISTING RPZ

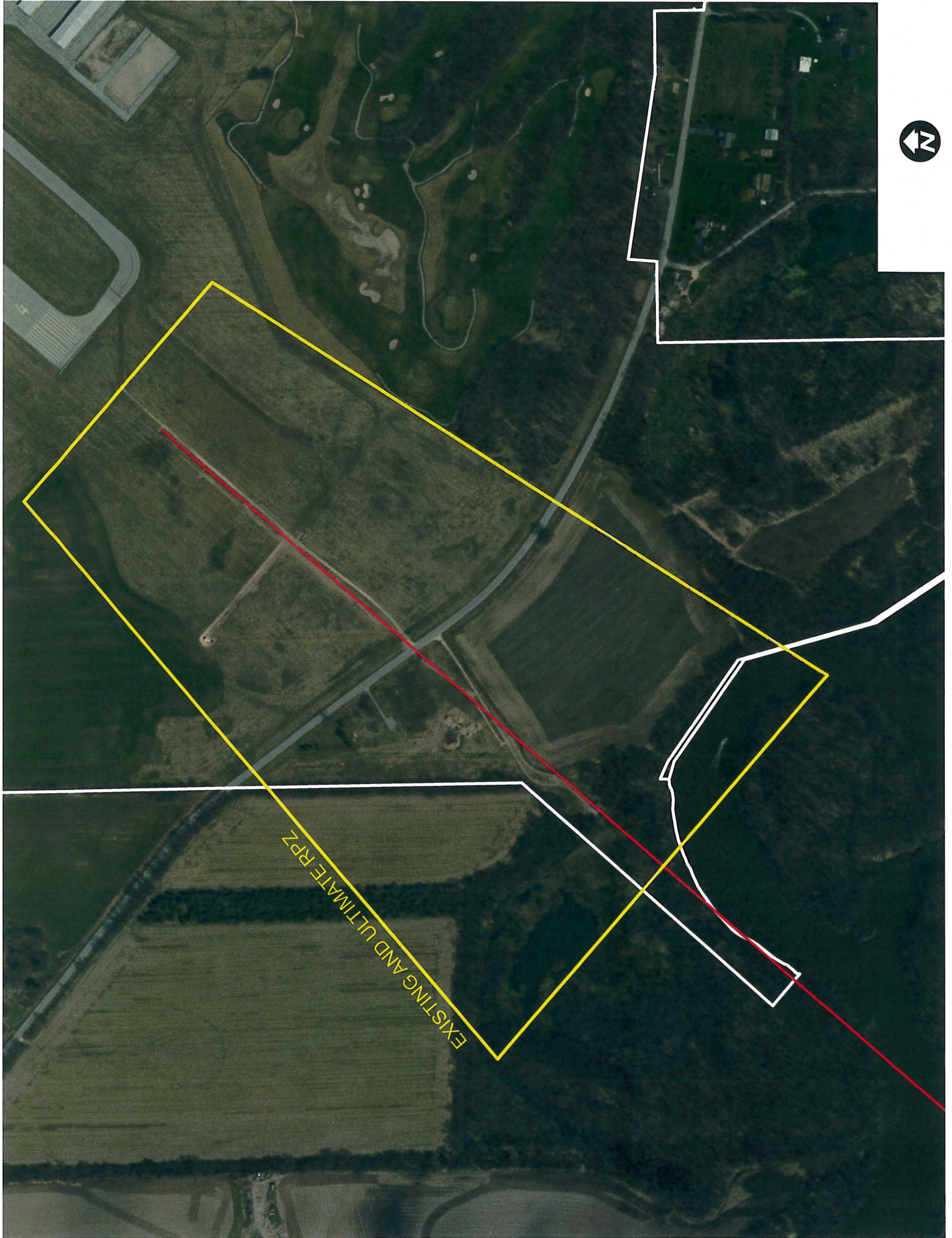
AIRPORT PROPERTY LINE

RPZ





EXISTING AND ULTIMATE RPZ



How are similar WI airports governed?

We asked Airport Directors/Managers:

1. How is your airport governed? i.e. County Board of Supervisors, City Council, Mayor, committee, etc.
2. Who is your boss or whom do you report too?
3. How many people work to operate your airport, including yourself (staff and full or part-time)?

Rhineland Airport (Part 139 w/Commercial Service)

- 1). Owned by City of Rhineland and County of Oneida. Run by 3 member airport commission. Commissioners have 6yr term and selections alternated between city & county.
- 2). Reports to commission
- 3). 1-Director 1-Asst. Director 5-full-time maintenance

Eau Claire Airport (Part 139 w/Commercial Service)

- 1). Owned by Counties of Eau Claire and Chippewa. Operated by 7- member Airport Commission between both counties; 1 County Board Supervisor each, 3 citizens of Eau Claire County, 2 citizens of Chippewa County.
- 2). Airport Director reports to commission Chair.
- 3). 1- Director 1-office assistant 1-Maintenance Supervisor 2-full-time/2-part-time maintenance

Oshkosh Airport (Part 139 only during EAA AirVenture)

- 1). Owned by Winnebago County. 5-member Aviation Committee oversees airport and makes recommendations to 36 County Board of Supervisors.
- 2). Airport Director reports to Winnebago County Executive.
- 3). 1- Director, 5 full-time maintenance staff

Waukesha County Airport

- 1). Owned by Waukesha County. Operated by 5-person Airport Commission: the Chair is County Board Supervisor, others may be other Supervisors or selected from general public.
- 2). Airport Manager reports to Public Works Director
- 3). 1- Manager, 1- Operations Manager, 1- Administrative Assistant

Sheboygan County Airport

- 1). Owned by Sheboygan County. County Transportation Committee has oversight. The committee consists of 5 County Board Supervisors and the Transportation Commissioner (Highway Commissioner) acts as Chair.
- 2). Airport Superintendent reports to the Transportation Commissioner (Highway Commissioner).
- 3). 3 full-time staff members: Superintendent and 2 – maintenance. 1 – Part-time maintenance for snow removal operations.

Kenosha Airport

- 1). City owned. Unknown board make-up
- 2). Airport Director reports to ??
- 3). 1- Airport Director, 1 – Operations Supervisor, 3- Part-time maintenance, 1- Part-time admin secretary

Wisconsin Rapids Airport

- 1). Owned by Wood County. Operated by Airport Commission of Wisconsin Rapids Mayor, Port Edwards non-elected public member, Nekoosa Alderman, and Grand Rapids Township Chair. They may serve up to 7 years on commission. Wisconsin Rapids Mayor is Chair.
- 2). Airport Manager reports to Chair.
- 3). Manager & 2 – Part-time maintenance

Title 14, Code of Federal Regulations, Part 139

Establishes certification requirements for airports serving scheduled and unscheduled air carrier aircraft with more than 30 seats; serve scheduled air carrier operations in aircraft with more than 9 seats but less than 31 seats; and does not apply to airports at which air carrier passenger operations are conducted only because the airport has been designated as an alternate airport.

To obtain a certificate, an airport must agree to certain operational and safety standard and provide for such things as firefighting and rescue equipment.

To ensure that airports with Airport Operating Certificates are meeting the requirements of Part 139, FAA Safety Inspectors conduct certification inspections. These typically occur yearly, but FAA can also make unannounced inspections. Inspections include: pre-inspection review, in-briefing with airport management, administrative inspection of files, movement area, aircraft rescue and firefighting, fueling facilities, night inspection and post inspection briefing with airport management.

If FAA finds that an airport is not meeting its obligations, it often imposes an administrative action. It can also impose a financial penalty for each day the airport continues to violate a Part 139 requirement. In extreme cases, FAA might revoke the airport's certificate.

Q&A with FAA and WI Bureau of Aeronautics (BOA)

Q1: Since JVL doesn't currently have any commercial flight operations (considered Part 121 or 380), can we request to cancel our Part 139?

A: Yes, make the request with our FAA Regional Flight District Office (FDO). The FAA will consider the request, ensuring that any safety-related corrective action is completed or scheduled for completion. The FAA will then decide on the surrender request.

Q2: How long would the request to surrender process take?

A: After initially sending the request to the ADO, approximately 30-45 days.

Q3: Can JVL re-apply for a Part 139 certificate should a commercial carrier commit to providing service to JVL in the future?

A: Yes. The FAA simply conducts a re-certification inspection (similar to the Periodic inspections JVL has undergone previously), and issues any corrective action along with the new certificate. The FAA inspector would work with Airport Manager and barring major issues, issue new certificate within a couple weeks.

Q4: Would JVL lose its status as a national Plan of Integrated Airport Systems (NPIAS) airport?

A: No. JVL will not lose its status on NPIAS report. JVL's Part 139 status has no bearing on any existing obligations or eligibility under the Airport Improvement Program (AIP). We wouldn't be penalized to receive AIP federal funds nor receive lower priority for future projects. This wouldn't be perceived negatively with state funds either.

Q5: Do non-Part 139 airports self-inspect?

A: Since the FAA wouldn't be inspecting, the state BOA would perform this function but less frequently. 3-5 years versus 12-24 months.

Q6: Do non-Part 139 airports typically continue to follow same standards?

A: Yes. Majority of non-139 airports continue to follow rules and guidelines established by the FAA and state. Airports still have a responsibility to maintain safe operating practices.

Q7: Would losing Part 139 status have any impact on Part 61, 91, 135, or 141 holders (flight schools or charter flight operators)?

A: No impact from FAA or state. Each certificate holder would have to answer that, but doubtful as many other non-Part 139 airports have those same entities without issue.

Q8: Would there be any negative impact to the Control Tower-Midwest ATC being funded through the FAA to operate?

A: No. There are federally funded Control Towers that operate at non-139 airports. Those airports are funded due to the number of operations not if the airport is 139 or not.

2016 Fuel Flow 100LL

Airport Facility Name:	Classification:	Was 100LL sold at the airport in 2016?	Who was the seller of the 100LL?	How many gallons of 100LL were sold in 2016?	Revenue Per Gallon
Fort Atkinson Municipal Airport	Medium General Aviation	Yes		5,001 - 10,000	\$0.06 - \$0.10
Stevens Point Municipal Airport	Large General Aviation	Yes	Airport	45,001 - 60,000	.00 - .00
Monroe Municipal Airport	Medium General Aviation	Yes	Airport	45,001 - 60,000	\$0.51 - \$0.75
Alexander Field- South Wood County Airport	Medium General Aviation	Yes	Airport	20,001 - 30,000	.00 - .00
Batten International Airport	Large General Aviation	Yes	Airport;FBO	30,001 - 45,000	.00 - .00
Chippewa Valley Regional Airport	Commercial Service	Yes	FBO	45,001 - 60,000	\$0.06 - \$0.10
Dane County Regional Airport	Commercial Service	Yes	FBO	150,001 - 300,000	\$0.06 - \$0.10
Green Bay-Austin Straubel International Airport	Commercial Service	Yes	FBO	60,001 - 80,000	\$0.06 - \$0.10
La Crosse Regional Airport	Commercial Service	Yes	FBO	30,001 - 45,000	\$0.06 - \$0.10
Appleton International Airport	Commercial Service	Yes	FBO	80,001 - 100,000	\$0.01 - \$0.05
Central Wisconsin Airport	Commercial Service	Yes	FBO	10,001 - 20,000	\$0.01 - \$0.05
Rhineland/Oneida County Airport	Commercial Service	Yes	FBO	10,001 - 20,000	\$0.01 - \$0.05
Kenosha Regional Airport	Large General Aviation	Yes	FBO	80,001 - 100,000	\$0.16 - \$0.20
Fond du Lac County Airport	Large General Aviation	Yes	FBO	30,001 - 45,000	\$0.11 - \$0.15
Sheboygan County Memorial Airport	Large General Aviation	Yes	FBO	45,001 - 60,000	\$0.11 - \$0.15
Rice Lake Regional Airport	Large General Aviation	Yes	FBO	20,001 - 30,000	\$0.06 - \$0.10
Southern Wisconsin Regional Airport	Large General Aviation	Yes	FBO	30,001 - 45,000	\$0.06 - \$0.10
Waukesha County Airport	Large General Aviation	Yes	FBO	100,001 - 150,000	\$0.06 - \$0.10
West Bend Municipal Airport	Large General Aviation	Yes	FBO	30,001 - 45,000	\$0.06 - \$0.10
Wittman Regional Airport	Large General Aviation	Yes	FBO	150,001 - 300,000	\$0.06 - \$0.10
East Troy Municipal Airport	Large General Aviation	Yes	FBO	20,001 - 30,000	\$0.01 - \$0.05
New Richmond Regional Airport	Large General Aviation	Yes	FBO	45,001 - 60,000	\$0.01 - \$0.05
Dodge County Airport	Medium General Aviation	Yes	FBO	30,001 - 45,000	\$0.06 - \$0.10
Portage Municipal Airport	Medium General Aviation	Yes	FBO	10,001 - 20,000	\$0.01 - \$0.05
Sawyer County Airport	Medium General Aviation	Yes	FBO	10,001 - 20,000	\$0.01 - \$0.05

Sorted first by classification and then by revenue per gallon high to low.

2016 Fuel Flow Jet A

Airport Facility Name:	Classification:	Was Jet A sold at the airport in 2016?	Who was the seller of the Jet A?	How many gallons of Jet A were sold in 2016?	Revenue Per Gallon
Fort Atkinson Municipal Airport	Medium General Aviation	No			
Portage Municipal Airport	Medium General Aviation	No			
Stevens Point Municipal Airport	Large General Aviation	Yes	Airport	75,001 - 100,000	\$0.06 - \$0.10
Alexander Field- South Wood County Airport	Medium General Aviation	Yes	Airport	10,001 - 25,000	.00 - .00
Monroe Municipal Airport	Medium General Aviation	Yes	Airport	10,001 - 25,000	More than \$1.00
Batten International Airport	Large General Aviation	Yes	Airport;FBO	100,001 - 200,000	.00 - .00
Chippewa Valley Regional Airport	Commercial Service	Yes	FBO	More than 1,500,000	\$0.06 - \$0.10
Dane County Regional Airport	Commercial Service	Yes	FBO	More than 1,500,000	\$0.06 - \$0.10
Green Bay-Austin Straubel International Airport	Commercial Service	Yes	FBO	400,001 - 800,000	\$0.06 - \$0.10
La Crosse Regional Airport	Commercial Service	Yes	FBO	800,001 - 1,250,000	\$0.06 - \$0.10
Appleton International Airport	Commercial Service	Yes	FBO	400,001 - 800,000	\$0.01 - \$0.05
Central Wisconsin Airport	Commercial Service	Yes	FBO	800,001 - 1,250,000	\$0.01 - \$0.05
Rhineland/Oneida County Airport	Commercial Service	Yes	FBO	100,001 - 200,000	\$0.01 - \$0.05
Kenosha Regional Airport	Large General Aviation	Yes	FBO	800,001 - 1,250,000	\$0.16 - \$0.20
Fond du Lac County Airport	Large General Aviation	Yes	FBO	200,001 - 400,000	\$0.11 - \$0.15
Sheboygan County Memorial Airport	Large General Aviation	Yes	FBO	400,001 - 800,000	\$0.11 - \$0.15
Rice Lake Regional Airport	Large General Aviation	Yes	FBO	100,001 - 200,000	\$0.06 - \$0.10
Southern Wisconsin Regional Airport	Large General Aviation	Yes	FBO	800,001 - 1,250,000	\$0.06 - \$0.10
Waukesha County Airport	Large General Aviation	Yes	FBO	800,001 - 1,250,000	\$0.06 - \$0.10
West Bend Municipal Airport	Large General Aviation	Yes	FBO	25,001 - 50,000	\$0.06 - \$0.10
Wittman Regional Airport	Large General Aviation	Yes	FBO	400,001 - 800,000	\$0.06 - \$0.10
East Troy Municipal Airport	Large General Aviation	Yes	FBO	10,001 - 25,000	\$0.01 - \$0.05
New Richmond Regional Airport	Large General Aviation	Yes	FBO	75,001 - 100,000	\$0.01 - \$0.05
Dodge County Airport	Medium General Aviation	Yes	FBO	25,001 - 50,000	\$0.06 - \$0.10
Sawyer County Airport	Medium General Aviation	Yes	FBO	100,001 - 200,000	\$0.06 - \$0.10

Sorted by airport classification and then by revenue per gallon highest to lowest

2016 Landing Fees

Airport Facility Name:	Classification:	Were landing fees charged in 2016?	Who charged the landing fees?	Landing fee for a Beechcraft King Air.	Landing fee for a Cessna Citation II.	Landing fee for a Bombardier CRJ-200.
East Troy Municipal Airport	Large General Aviation	No				
Fond du Lac County Airport	Large General Aviation	No				
Kenosha Regional Airport	Large General Aviation	No				
New Richmond Regional Airport	Large General Aviation	No				
Sheboygan County Memorial Airport	Large General Aviation	No				
Stevens Point Municipal Airport	Large General Aviation	No				
Waukesha County Airport	Large General Aviation	No				
Alexander Field- South Wood County Airport	Medium General Aviation	No				
Dodge County Airport	Medium General Aviation	No				
Fort Atkinson Municipal Airport	Medium General Aviation	No				
Monroe Municipal Airport	Medium General Aviation	No				
Portage Municipal Airport	Medium General Aviation	No				
Sawyer County Airport	Medium General Aviation	No				
La Crosse Regional Airport	Commercial Service	Yes	Airport	\$0.30	\$41.00	\$187.00
Dane County Regional Airport	Commercial Service	Yes	Airport	\$40.13	\$40.13	\$128.50
Central Wisconsin Airport	Commercial Service	Yes	Airport			\$107.00
Green Bay-Austin Straubel International Airport	Commercial Service	Yes	Airport;FBO			\$77.00
Chippewa Valley Regional Airport	Commercial Service	Yes	Airport			\$64.50
Appleton International Airport	Commercial Service	Yes	Airport			\$60.00
Rhineland/Oneida County Airport	Commercial Service	Yes	Airport			\$2.00
Batten International Airport	Large General Aviation	Yes	Airport;FBO	\$57.70	\$57.70	\$100.00
Southern Wisconsin Regional Airport	Large General Aviation	Yes	Airport			\$87.50
West Bend Municipal Airport	Large General Aviation	Yes	FBO	\$75.00	\$75.00	\$75.00
Wittman Regional Airport	Large General Aviation	Yes	FBO		\$11.00	\$55.00
Rice Lake Regional Airport	Large General Aviation	Yes	Airport;FBO	\$100.00	\$150.00	

Sorted by Airport Classification and then by landing fee for a Bombardier.

2016 Non Heated T-hangars

Airport Facility Name:	Classification:	Were non-heated T-hangars available to rent in 2016?	Who was the owner of the non-heated T-hangars?	Daily Rental Rate for a Cessna 172.	Monthly Rental Rate for a Cessna 172.
Dodge County Airport	Medium General Aviation	No			
Fort Atkinson Municipal Airport	Medium General Aviation	No			
Rhineland/Oneida County Airport	Commercial Service	No			
Sawyer County Airport	Medium General Aviation	No			
Sheboygan County Memorial Airport	Large General Aviation	No			
Dane County Regional Airport	Commercial Service	Yes	FBO		\$250.00
Fond du Lac County Airport	Large General Aviation	Yes	FBO		\$80.00
West Bend Municipal Airport	Large General Aviation	Yes			\$200.00
Kenosha Regional Airport	Large General Aviation	Yes	-BO; Private Owner(s)		\$275.00
Monroe Municipal Airport **	Medium General Aviation	Yes	Private Owner(s)		\$160.00
New Richmond Regional Airport	Large General Aviation	Yes	Private Owner(s)		\$150.00
Appleton International Airport	Commercial Service	Yes	Airport		
Green Bay-Austin Straubel International Airport	Commercial Service	Yes	Airport		\$241.00
Southern Wisconsin Regional Airport	Large General Aviation	Yes	Airport	\$10.00	\$216.00
Waukesha County Airport	Large General Aviation	Yes	Airport		\$199.00
Rice Lake Regional Airport	Large General Aviation	Yes	Airport		\$157.00
Wittman Regional Airport	Large General Aviation	Yes	Airport		\$154.00
Chippewa Valley Regional Airport	Commercial Service	Yes	Airport		\$150.00
Stevens Point Municipal Airport	Large General Aviation	Yes	Airport		\$135.00
Central Wisconsin Airport	Commercial Service	Yes	Airport		\$125.00
East Troy Municipal Airport	Large General Aviation	Yes	Airport		\$120.00
Alexander Field- South Wood County Airport	Medium General Aviation	Yes	Airport		\$111.00
Portage Municipal Airport	Medium General Aviation	Yes	Airport		\$110.00
La Crosse Regional Airport	Commercial Service	Yes	Airport		\$100.00
Monroe Municipal Airport **	Medium General Aviation	Yes	Airport		\$97.50
Batten International Airport	Large General Aviation	Yes	Airport;FBO		\$300.00

** Monroe has T-hangars owned by the airport and a private owner
Sorted by rate only

2016 Corporate Land Lease Rates

Airport Facility Name:	Classification:	Was airport property leased for corporate hangars in 2016?	How many corporate hangars were located on the airport in 2016?	Are additional corporate hangar lots available for immediate development on the airport?	What was the average annual lease rate for a corporate hangar ground lease per square foot?
Portage Municipal Airport	Medium General Aviation	No			
Rhinelander/Oneida County Airport	Commercial Service	Yes	1	Yes	\$0.05 - \$0.07
Dane County Regional Airport	Commercial Service	Yes	6	Yes	More than \$0.50
Chippewa Valley Regional Airport	Commercial Service	Yes	3	Yes	\$0.36 - \$0.50
La Crosse Regional Airport	Commercial Service	Yes	3	Yes	\$0.26 - \$0.35
Appleton International Airport	Commercial Service	Yes	2	Yes	\$0.21 - \$0.25
Central Wisconsin Airport	Commercial Service	Yes	3	Yes	\$0.17 - \$0.20
Green Bay-Austin Straubel International Airport	Commercial Service	Yes	6	Yes	\$0.17 - \$0.20
East Troy Municipal Airport	Large General Aviation	Yes	1	No	Less than \$0.05
Waukesha County Airport	Large General Aviation	Yes	3	Yes	\$0.26 - \$0.35
Fond du Lac County Airport	Large General Aviation	Yes	5	Yes	\$0.21 - \$0.25
Kenosha Regional Airport	Large General Aviation	Yes	7	Yes	\$0.21 - \$0.25
Stevens Point Municipal Airport	Large General Aviation	Yes	2	Yes	\$0.21 - \$0.25
Batten International Airport	Large General Aviation	Yes	10	Yes	\$0.17 - \$0.20
Sheboygan County Memorial Airport	Large General Aviation	Yes	10	Yes	\$0.14 - \$0.16
Wittman Regional Airport	Large General Aviation	Yes	6	Yes	\$0.14 - \$0.16
Southern Wisconsin Regional Airport	Large General Aviation	Yes	6	Yes	\$0.11 - \$0.13
West Bend Municipal Airport	Large General Aviation	Yes	4	Yes	\$0.11 - \$0.13
New Richmond Regional Airport	Large General Aviation	Yes	7	Yes	\$0.08 - \$0.10
Rice Lake Regional Airport	Large General Aviation	Yes	6	Yes	\$0.08 - \$0.10
Dodge County Airport	Medium General Aviation	Yes	7	Yes	\$0.14 - \$0.16
Fort Atkinson Municipal Airport	Medium General Aviation	Yes	2	Yes	\$0.11 - \$0.13
Sawyer County Airport	Medium General Aviation	Yes	1	No	\$0.11 - \$0.13
Alexander Field- South Wood County Airport	Medium General Aviation	Yes	1	Yes	\$0.08 - \$0.10
Monroe Municipal Airport	Medium General Aviation	Yes	5	Yes	\$0.08 - \$0.10

Sorted by Classification then by rate- highest to lowest

2016 Corporate Land Lease Rates

Airport Facility Name:	Classification:	Was airport property leased for corporate hangars in 2016?	How many corporate hangars were located on the airport in 2016?	Are additional corporate hangar lots available for immediate development on the airport?	What was the average annual lease rate for a corporate hangar ground lease per square foot?
Portage Municipal Airport	Medium General Aviation	No			
Dane County Regional Airport	Commercial Service	Yes	6	Yes	More than \$0.50
East Troy Municipal Airport	Large General Aviation	Yes	1	No	Less than \$0.05
Chippewa Valley Regional Airport	Commercial Service	Yes	3	Yes	\$0.36 - \$0.50
La Crosse Regional Airport	Commercial Service	Yes	3	Yes	\$0.26 - \$0.35
Waukesha County Airport	Large General Aviation	Yes	3	Yes	\$0.26 - \$0.35
Appleton International Airport	Commercial Service	Yes	2	Yes	\$0.21 - \$0.25
Fond du Lac County Airport	Large General Aviation	Yes	5	Yes	\$0.21 - \$0.25
Kenosha Regional Airport	Large General Aviation	Yes	7	Yes	\$0.21 - \$0.25
Stevens Point Municipal Airport	Large General Aviation	Yes	2	Yes	\$0.21 - \$0.25
Central Wisconsin Airport	Commercial Service	Yes	3	Yes	\$0.17 - \$0.20
Green Bay-Austin Straubel International Airport	Commercial Service	Yes	6	Yes	\$0.17 - \$0.20
Batten International Airport	Large General Aviation	Yes	10	Yes	\$0.17 - \$0.20
Sheboygan County Memorial Airport	Large General Aviation	Yes	10	Yes	\$0.14 - \$0.16
Wittman Regional Airport	Large General Aviation	Yes	6	Yes	\$0.14 - \$0.16
Dodge County Airport	Medium General Aviation	Yes	7	Yes	\$0.14 - \$0.16
Southern Wisconsin Regional Airport	Large General Aviation	Yes	6	Yes	\$0.11 - \$0.13
West Bend Municipal Airport	Large General Aviation	Yes	4	Yes	\$0.11 - \$0.13
Fort Atkinson Municipal Airport	Medium General Aviation	Yes	2	Yes	\$0.11 - \$0.13
Sawyer County Airport	Medium General Aviation	Yes	1	No	\$0.11 - \$0.13
New Richmond Regional Airport	Large General Aviation	Yes	7	Yes	\$0.08 - \$0.10
Rice Lake Regional Airport	Large General Aviation	Yes	6	Yes	\$0.08 - \$0.10
Alexander Field- South Wood County Airport	Medium General Aviation	Yes	1	Yes	\$0.08 - \$0.10
Monroe Municipal Airport	Medium General Aviation	Yes	5	Yes	\$0.08 - \$0.10
Rhineland/Oneida County Airport	Commercial Service	Yes	1	Yes	\$0.05 - \$0.07

2016 Private Land Lease Rates

Airport Facility Name:	Classification:	Was airport property leased for private hangars in 2016?	How many private hangars were located on the airport in 2016?	Are additional private hangar lots available for immediate development on the airport?	What was the average annual lease rate for a private hangar ground lease per square foot?
Central Wisconsin Airport	Commercial Service	No			
Dane County Regional Airport	Commercial Service	Yes	9	Yes	More than \$0.50
Chippewa Valley Regional Airport	Commercial Service	Yes	13	Yes	\$0.26 - \$0.35
La Crosse Regional Airport	Commercial Service	Yes	64	Yes	\$0.26 - \$0.35
Green Bay-Austin Straubel International Airport	Commercial Service	Yes	47	Yes	\$0.21 - \$0.25
Appleton International Airport	Commercial Service	Yes	22	Yes	\$0.14 - \$0.16
Rhineland/Oneida County Airport	Commercial Service	Yes	18	Yes	\$0.05 - \$0.07
East Troy Municipal Airport	Large General Aviation	Yes	52	No	Less than \$0.05
Kenosha Regional Airport	Large General Aviation	Yes	32	Yes	\$0.21 - \$0.25
Waukesha County Airport	Large General Aviation	Yes	47	Yes	\$0.21 - \$0.25
Batten International Airport	Large General Aviation	Yes	10	Yes	\$0.17 - \$0.20
Fond du Lac County Airport	Large General Aviation	Yes	35	Yes	\$0.17 - \$0.20
Stevens Point Municipal Airport	Large General Aviation	Yes	20	Yes	\$0.17 - \$0.20
Wittman Regional Airport	Large General Aviation	Yes	23	Yes	\$0.17 - \$0.20
Sheboygan County Memorial Airport	Large General Aviation	Yes	38	Yes	\$0.11 - \$0.13
Southern Wisconsin Regional Airport	Large General Aviation	Yes	5	Yes	\$0.11 - \$0.13
New Richmond Regional Airport	Large General Aviation	Yes	92	Yes	\$0.08 - \$0.10
Rice Lake Regional Airport	Large General Aviation	Yes	7	Yes	\$0.08 - \$0.10
West Bend Municipal Airport	Large General Aviation	Yes	23	Yes	\$0.08 - \$0.10
Portage Municipal Airport	Medium General Aviation	Yes	2	Yes	\$0.14 - \$0.16
Sawyer County Airport	Medium General Aviation	Yes	22	No	\$0.11 - \$0.13
Dodge County Airport	Medium General Aviation	Yes	33	Yes	\$0.08 - \$0.10
Fort Atkinson Municipal Airport	Medium General Aviation	Yes	22	Yes	\$0.08 - \$0.10
Monroe Municipal Airport	Medium General Aviation	Yes	20	Yes	\$0.08 - \$0.10
Alexander Field- South Wood County Airport	Medium General Aviation	Yes	22	Yes	\$0.05 - \$0.07

Sorted by Classification then by rate - highest to lowest

2016 Private Land Lease Rates

Airport Facility Name:	Classification:	Was airport property leased for private hangars in 2016?	How many private hangars were located on the airport in 2016?	Are additional private hangar lots available for immediate development on the airport?	What was the average annual lease rate for a private hangar ground lease per square foot?
Central Wisconsin Airport	Commercial Service	No			
Dane County Regional Airport	Commercial Service	Yes	9	Yes	More than \$0.50
East Troy Municipal Airport	Large General Aviation	Yes	52	No	Less than \$0.05
Chippewa Valley Regional Airport	Commercial Service	Yes	13	Yes	\$0.26 - \$0.35
La Crosse Regional Airport	Commercial Service	Yes	64	Yes	\$0.26 - \$0.35
Green Bay-Austin Straubel International Airport	Commercial Service	Yes	47	Yes	\$0.21 - \$0.25
Kenosha Regional Airport	Large General Aviation	Yes	32	Yes	\$0.21 - \$0.25
Waukesha County Airport	Large General Aviation	Yes	47	Yes	\$0.21 - \$0.25
Batten International Airport	Large General Aviation	Yes	10	Yes	\$0.17 - \$0.20
Fond du Lac County Airport	Large General Aviation	Yes	35	Yes	\$0.17 - \$0.20
Stevens Point Municipal Airport	Large General Aviation	Yes	20	Yes	\$0.17 - \$0.20
Wittman Regional Airport	Large General Aviation	Yes	23	Yes	\$0.17 - \$0.20
Appleton International Airport	Commercial Service	Yes	22	Yes	\$0.14 - \$0.16
Portage Municipal Airport	Medium General Aviation	Yes	2	Yes	\$0.14 - \$0.16
Sheboygan County Memorial Airport	Large General Aviation	Yes	38	Yes	\$0.11 - \$0.13
Southern Wisconsin Regional Airport	Large General Aviation	Yes	5	Yes	\$0.11 - \$0.13
Sawyer County Airport	Medium General Aviation	Yes	22	No	\$0.11 - \$0.13
New Richmond Regional Airport	Large General Aviation	Yes	92	Yes	\$0.08 - \$0.10
Rice Lake Regional Airport	Large General Aviation	Yes	7	Yes	\$0.08 - \$0.10
West Bend Municipal Airport	Large General Aviation	Yes	23	Yes	\$0.08 - \$0.10
Dodge County Airport	Medium General Aviation	Yes	33	Yes	\$0.08 - \$0.10
Fort Atkinson Municipal Airport	Medium General Aviation	Yes	22	Yes	\$0.08 - \$0.10
Monroe Municipal Airport	Medium General Aviation	Yes	20	Yes	\$0.08 - \$0.10
Rhineland/Oneida County Airport	Commercial Service	Yes	18	Yes	\$0.05 - \$0.07
Alexander Field- South Wood County Airport	Medium General Aviation	Yes	22	Yes	\$0.05 - \$0.07

Sorted by Rate only highest to lowest

2016 Commercial Rate

Airport Facility Name:	Classification:	Was airport property leased for commercial aeronautical use in 2016?	How many commercial aeronautical hangars were located on the airport in 2016?	Are additional commercial aeronautical use hangars lots available for immediate development on the airport?	What was the average annual ground lease rate for a commercial aeronautical hangar per square foot?
Chippewa Valley Regional Airport	Commercial Service	No			
East Troy Municipal Airport	Large General Aviation	No			
Green Bay-Austin Straubel International Airport	Commercial Service	No			
Kenosha Regional Airport	Large General Aviation	No			
Portage Municipal Airport	Medium General Aviation	No			
Rhineland/Oneida County Airport	Commercial Service	No			
Rice Lake Regional Airport	Large General Aviation	No			
Sawyer County Airport	Medium General Aviation	No			
Stevens Point Municipal Airport	Large General Aviation	No			
Dane County Regional Airport	Commercial Service	Yes	26	No	More than \$0.50
Central Wisconsin Airport	Commercial Service	Yes	2	Yes	\$0.26 - \$0.35
La Crosse Regional Airport	Commercial Service	Yes	5	Yes	\$0.26 - \$0.35
Appleton International Airport	Commercial Service	Yes	4	Yes	\$0.21 - \$0.25
Waukesha County Airport	Large General Aviation	Yes	9	Yes	\$0.26 - \$0.35
Fond du Lac County Airport	Large General Aviation	Yes	1	Yes	\$0.21 - \$0.25
Batten International Airport	Large General Aviation	Yes	4	Yes	\$0.17 - \$0.20
Wittman Regional Airport	Large General Aviation	Yes	7	Yes	\$0.17 - \$0.20
Southern Wisconsin Regional Airport	Large General Aviation	Yes	8	Yes	\$0.14 - \$0.16
Sheboygan County Memorial Airport	Large General Aviation	Yes	5	Yes	\$0.11 - \$0.13
West Bend Municipal Airport	Large General Aviation	Yes	13	Yes	\$0.11 - \$0.13
New Richmond Regional Airport	Large General Aviation	Yes	3	Yes	\$0.05 - \$0.07
Dodge County Airport	Medium General Aviation	Yes	1	No	\$0.14 - \$0.16
Fort Atkinson Municipal Airport	Medium General Aviation	Yes	2	Yes	\$0.08 - \$0.10
Monroe Municipal Airport	Medium General Aviation	Yes	2	Yes	\$0.08 - \$0.10
Alexander Field- South Wood County Airport	Medium General Aviation	Yes	2	Yes	\$0.05 - \$0.07

Sorted first by Classification then by cost high to low

2016 Commercial Rate

Airport Facility Name:	Classification:	Was airport property leased for commercial aeronautical use in 2016?	How many commercial aeronautical hangars were located on the airport in 2016?	Are additional commercial aeronautical use hangar lots available for immediate development on the airport?	What was the average annual ground lease rate for a commercial aeronautical hangar per square foot?
Chippewa Valley Regional Airport	Commercial Service	No			
East Troy Municipal Airport	Large General Aviation	No			
Green Bay-Austin Straubel International Airport	Commercial Service	No			
Kenosha Regional Airport	Large General Aviation	No			
Portage Municipal Airport	Medium General Aviation	No			
Rhineland/Oneida County Airport	Commercial Service	No			
Rice Lake Regional Airport	Large General Aviation	No			
Sawyer County Airport	Medium General Aviation	No			
Stevens Point Municipal Airport	Large General Aviation	No			
Dane County Regional Airport	Commercial Service	Yes	26	No	More than \$0.50
Central Wisconsin Airport	Commercial Service	Yes	2	Yes	\$0.26 - \$0.35
La Crosse Regional Airport	Commercial Service	Yes	5	Yes	\$0.26 - \$0.35
Waukesha County Airport	Large General Aviation	Yes	9	Yes	\$0.26 - \$0.35
Appleton International Airport	Commercial Service	Yes	4	Yes	\$0.21 - \$0.25
Fond du Lac County Airport	Large General Aviation	Yes	1	Yes	\$0.21 - \$0.25
Batten International Airport	Large General Aviation	Yes	4	Yes	\$0.17 - \$0.20
Wittman Regional Airport	Large General Aviation	Yes	7	Yes	\$0.17 - \$0.20
Southern Wisconsin Regional Airport	Large General Aviation	Yes	8	Yes	\$0.14 - \$0.16
Dodge County Airport	Medium General Aviation	Yes	1	No	\$0.14 - \$0.16
Sheboygan County Memorial Airport	Large General Aviation	Yes	5	Yes	\$0.11 - \$0.13
West Bend Municipal Airport	Large General Aviation	Yes	13	Yes	\$0.11 - \$0.13
Fort Atkinson Municipal Airport	Medium General Aviation	Yes	2	Yes	\$0.08 - \$0.10
Monroe Municipal Airport	Medium General Aviation	Yes	2	Yes	\$0.08 - \$0.10
New Richmond Regional Airport	Large General Aviation	Yes	3	Yes	\$0.05 - \$0.07
Alexander Field- South Wood County Airport	Medium General Aviation	Yes	2	Yes	\$0.05 - \$0.07

Sorted by cost only, high to low

2016 Agriculture

Airport Facility Name:	Classification:	Was airport property leased for agricultural use in 2016?	How many acres were leased for agricultural use in 2016?	What was the average annual lease rate per acre?	Are the agricultural leases competitively bid?	How often are the leases competitively bid?
Alexander Field- South Wood County Airport	Medium General Aviation	No				
Batten International Airport	Large General Aviation	No				
Chippewa Valley Regional Airport	Commercial Service	No				
East Troy Municipal Airport	Large General Aviation	No				
La Crosse Regional Airport	Commercial Service	No				
Portage Municipal Airport	Medium General Aviation	No				
Rhineland/Oneida County Airport	Commercial Service	No				
Sawyer County Airport	Medium General Aviation	No				
Stevens Point Municipal Airport	Large General Aviation	No				
Waukesha County Airport	Large General Aviation	No				
Dane County Regional Airport	Commercial Service	Yes	201 - 300	\$100.01 - \$150.00	Yes	Every 7 Years
Appleton International Airport	Commercial Service	Yes	301 - 500	\$50.01 - \$75.00	No	
Green Bay-Austin Straubel International Airport	Commercial Service	Yes	More than 1,000	\$50.01 - \$75.00	No	
Central Wisconsin Airport	Commercial Service	Yes	501 - 1,000	\$75.01 - \$100.00	No	
New Richmond Regional Airport	Large General Aviation	Yes	101 - 150	\$100.01 - \$150.00	No	
Fond du Lac County Airport	Large General Aviation	Yes	201 - 300	\$100.01 - \$150.00	Yes	Every 3 Years
West Bend Municipal Airport	Large General Aviation	Yes	26 - 50	\$100.01 - \$150.00	No	
Wittman Regional Airport	Large General Aviation	Yes	51 - 100	\$25.01 - \$50.00	No	
Sheboygan County Memorial Airport	Large General Aviation	Yes	301 - 500	\$50.01 - \$75.00	No	
Southern Wisconsin Regional Airport	Large General Aviation	Yes	301 - 500	\$50.01 - \$75.00	Yes	Every 3 Years
Rice Lake Regional Airport	Large General Aviation	Yes	501 - 1,000	\$50.01 - \$75.00	No	
Kenosha Regional Airport	Large General Aviation	Yes	151 - 200	\$75.01 - \$100.00	No	
Dodge County Airport	Medium General Aviation	Yes	201 - 300	\$150.01 - \$200.00	Yes	Every 4 Years
Monroe Municipal Airport	Medium General Aviation	Yes	51 - 100	\$150.01 - \$200.00	Yes	Every 5 Years
Fort Atkinson Municipal Airport	Medium General Aviation	Yes	26 - 50	More than \$250	Yes	Every 3 Years

Sorted by classification

2016 Self Sustainability

Airport Facility Name:	Classification:	Was the airport financially self-sustaining in 2016?	How much of the local tax levy was used to subsidize airport revenues in 2016?
Appleton International Airport	Commercial Service	Yes	
Central Wisconsin Airport	Commercial Service	Yes	
Dane County Regional Airport	Commercial Service	Yes	
Green Bay-Austin Straubel International Airport	Commercial Service	Yes	
La Crosse Regional Airport	Commercial Service	Yes	
Batten International Airport	Large General Aviation	Yes	
East Troy Municipal Airport	Large General Aviation	Yes	
New Richmond Regional Airport	Large General Aviation	Yes	
West Bend Municipal Airport	Large General Aviation	Yes	
Fort Atkinson Municipal Airport	Medium General Aviation	Yes	
Chippewa Valley Regional Airport	Commercial Service	No	\$250,000.01 - \$500,000.00
Rhinelander/Oneida County Airport	Commercial Service	No	\$250,000.01 - \$500,000.00
Southern Wisconsin Regional Airport	Large General Aviation	No	More than \$500,000
Wittman Regional Airport	Large General Aviation	No	More than \$500,000
Rice Lake Regional Airport	Large General Aviation	No	\$150,000.01 - \$250,000.00
Sheboygan County Memorial Airport	Large General Aviation	No	\$150,000.01 - \$250,000.00
Waukesha County Airport	Large General Aviation	No	\$150,000.01 - \$250,000.00
Stevens Point Municipal Airport	Large General Aviation	No	\$100,000.01 - \$150,000.00
Fond du Lac County Airport	Large General Aviation	No	\$25,000.01 - \$50,000.00
Kenosha Regional Airport	Large General Aviation	No	\$25,000.01 - \$50,000.00
Alexander Field- South Wood County Airport	Medium General Aviation	No	\$75,000.01 - \$100,000.00
Sawyer County Airport	Medium General Aviation	No	\$75,000.01 - \$100,000.00
Dodge County Airport	Medium General Aviation	No	\$100,000.01 - \$150,000.00
Monroe Municipal Airport	Medium General Aviation	No	\$100,000.01 - \$150,000.00
Portage Municipal Airport	Medium General Aviation	No	

Sorted first by classification and then by tax levy highest to lowest