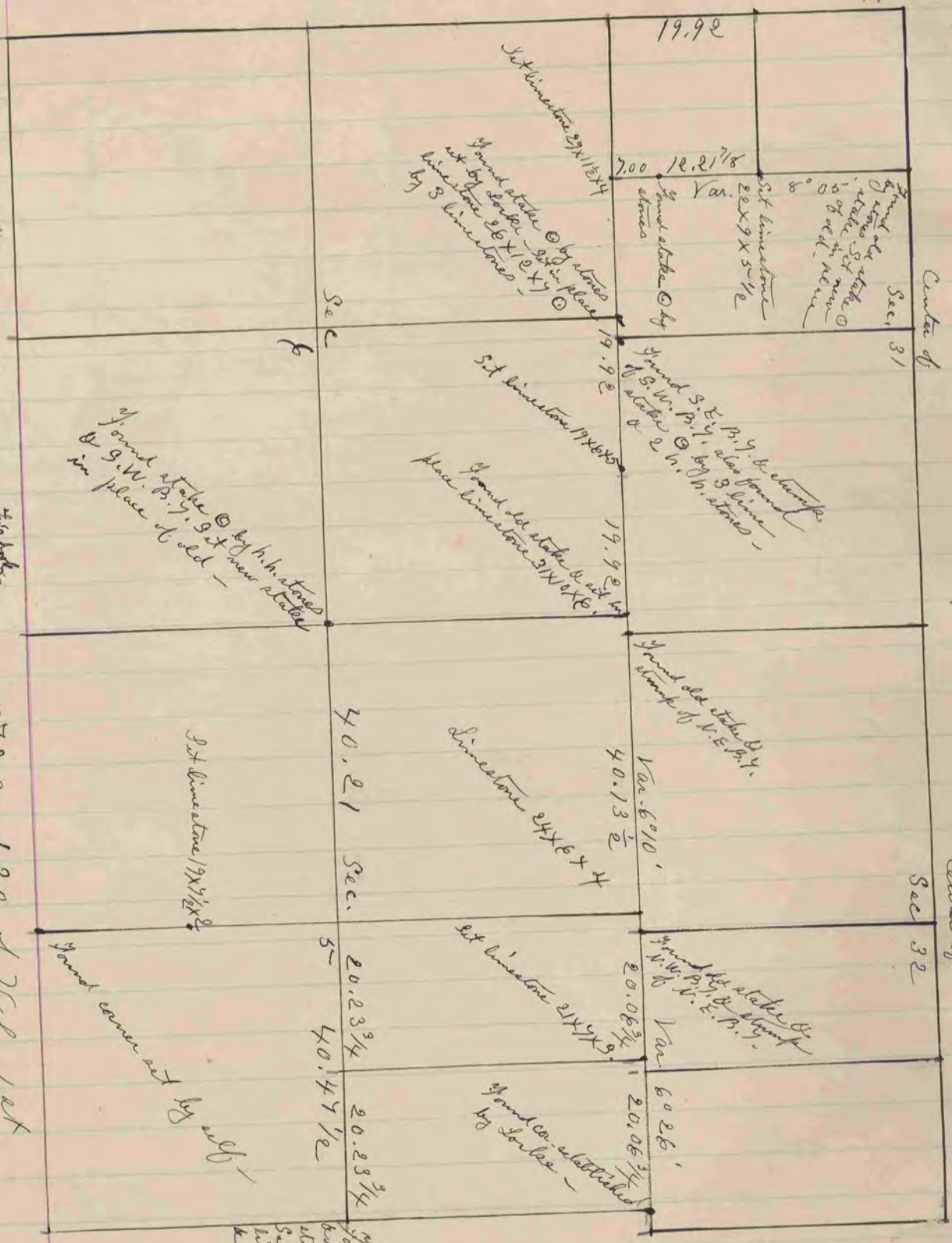


S. 1/2 limestone 18x11x4
& part limestone m. E. & W.

S. 1/2 limestone 22x11x6



See Page 47 & Pages 573 & 180 of Vol 1st

The above is a record & plat of a Survey made
by me on Sec - 5 & Spring Valley & 31 & 32 Mag-
nolia - Dec. 19. 21 - 1882