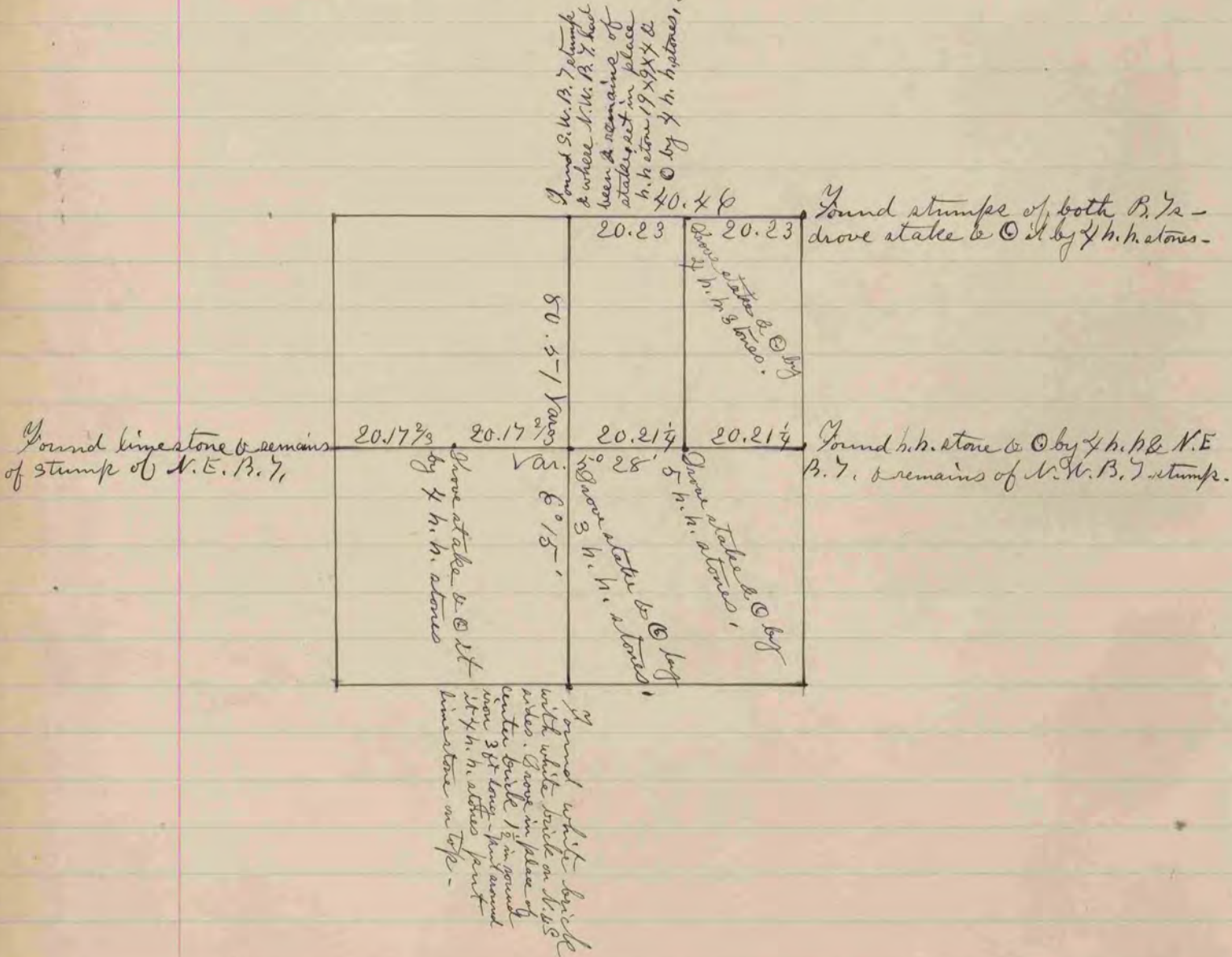


Found remains of both B. 7.  
stump & remains of old  
stake - Drove new stake  
by a lot of flinty  
h. h. stones -

The S.E. Cor. of Sec. 34 75. R. 12 is 32 lbs west of  
N.E. cor. of sec. 3 Fulton -  
The N. 7/4 cor. of sec. 3 Fulton is 1.25 - 2/4 ch  
E of the S 1/4 cor. of Sec. 34 75. R. 12 -

(See Page 31. of this book)

The above is a record & plat of a Survey made by me  
on Sec. 3 Fulton Aug 7<sup>th</sup> 1884



Found white boy's  
with white brick on N.W. B.  
center brick 1/2 in ground  
was 3 ft long - part  
of 4 h. h. stones part  
limestone on top -

The above is a record & plat of a Survey made by me on Sec 8, Jonesville  
April 21<sup>st</sup> 1884