

Found bases of old stake
of S.W. R. 7, had been
dug up - Set limestone
24x10x3 @ by 4 h. h. stones -

Found old stake & stump
of B. 7. Set limestone
24 long 5 in thick & 7
inch wide at top & 1/4
at bottom - @ by 4 h.
h. stones.

Set triangular h. h.
stone 21x7 @ it
by 4 h. h.

Found stake & stump of N.E. R. 7 -
where S.W. R. 7 had been dug up -
put in place of stake, limestone
30x7x4 @ by 4 h. h. stones,

Found remains of B. 7 stump
& where old stake was, set limestone
24x10x3 @ by 4 h. h.
stone stake.

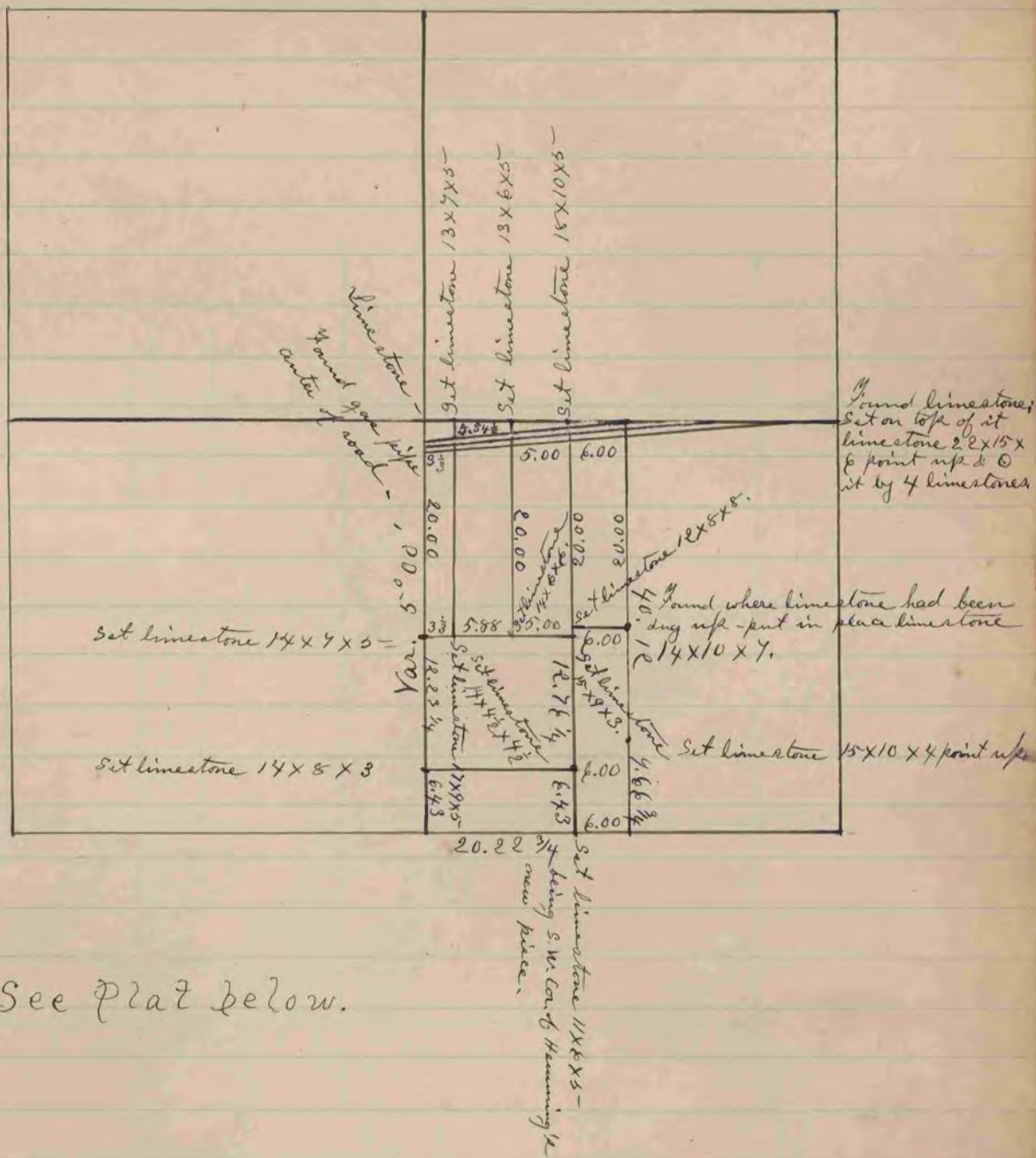
Found stake @
by 4 h. h. Set in place
limestone 20x6x3 @
by 4 h. h.

Found remains
of old stake & where
B. 7 had been dug up.
Set in place of old
stake h. h. stone
24x18x1/4 point
up.

Set limestone
22x7x3 @ put
h. h. stones on
E & W. sides.

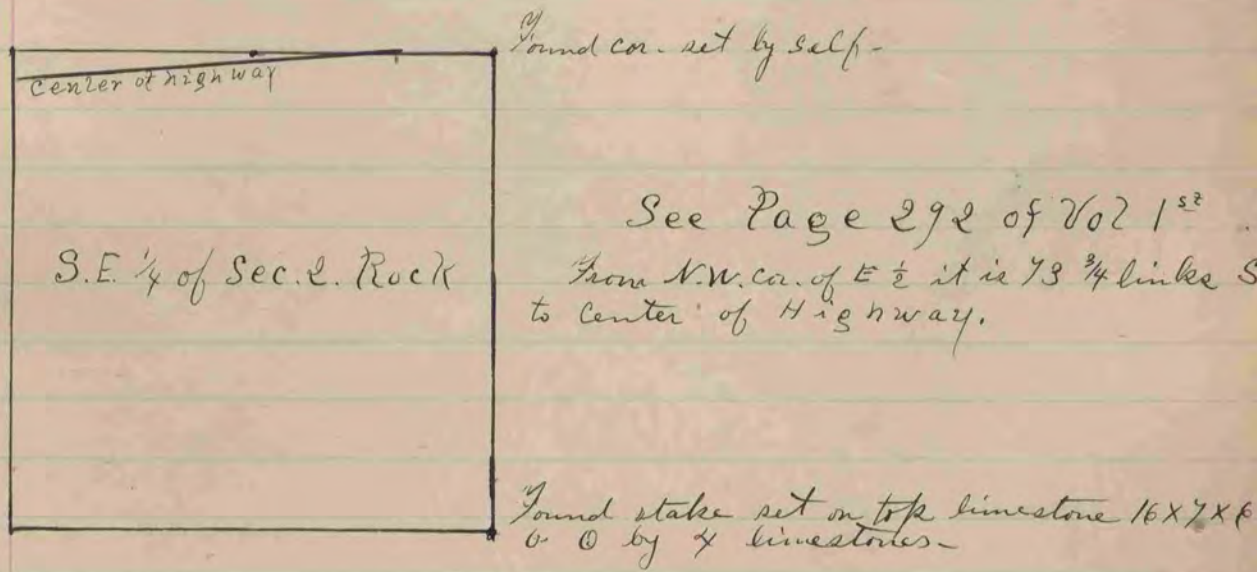
Found stake @
by 4 h. h. Set in place
limestone 20x6x3 @
by 4 h. h.

The above is a record & plat of a survey made
by on Sec 29 T. 1 N. 7 E. Oct 9, 1884



See Plat below.

The above is a record & plat of a survey made by me on Sec. 2, Rock, Oct. 3, 1884 & Oct. 7, 1884 -



The above is a record & plat of a survey made by me on Sec. 2, Rock July 2, 1883.