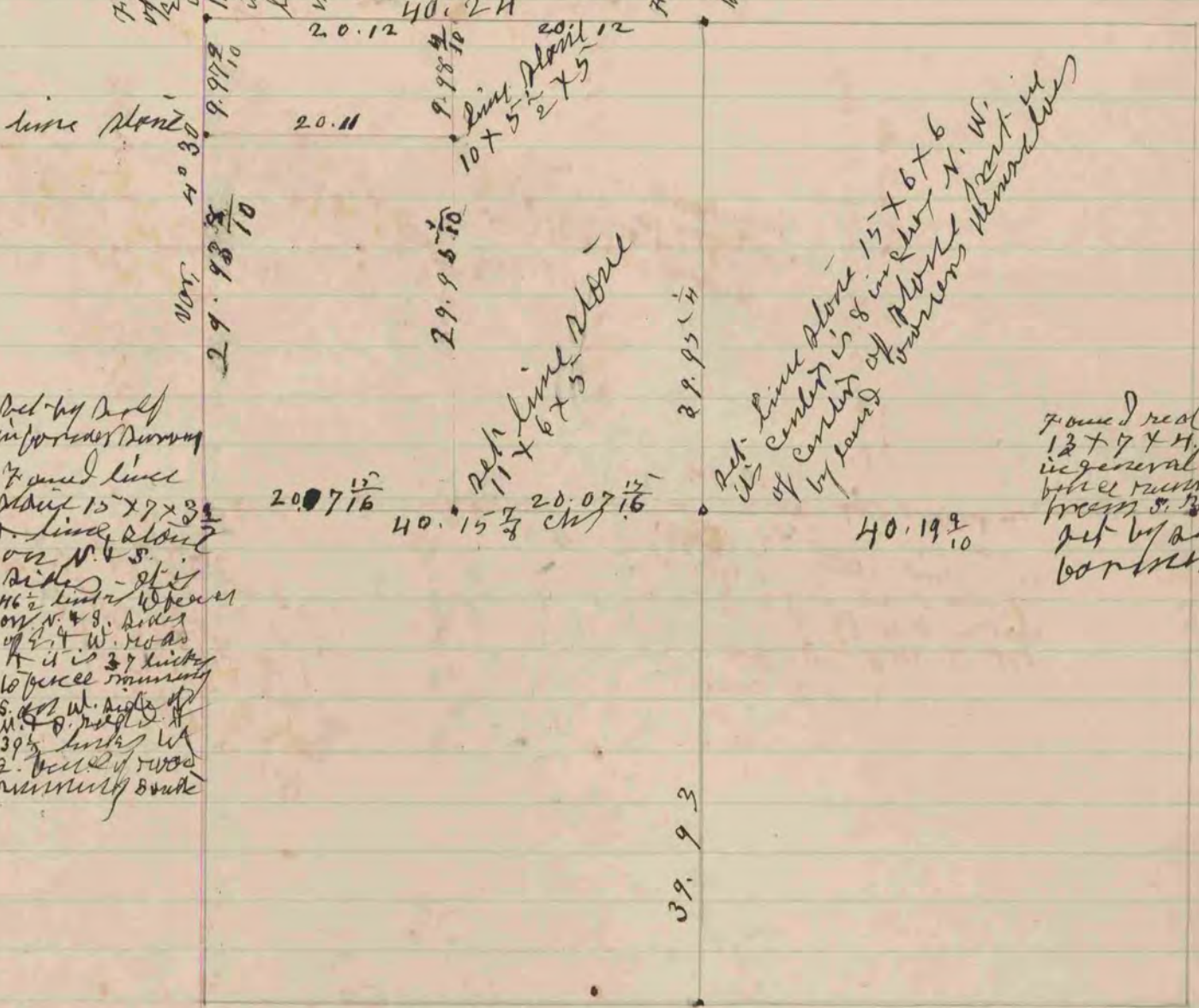


Found stake in ground line
of bridge runs N. 89.9
E. 4 W. 300 ft. to top of stake
depth 4 ft. finding top of stake
11 x 6 x 4 1/2. This corner is 7
inches N. of N. side of
large post at post; at
intersection of post and

Found line stone 16 x 8 x 5
set by self in former
survey -



Set by self
in former survey
Found line
stone 15 x 7 x 3 1/2
line stone
on N. & S.
sides - 8 1/2
46 1/2 line to post
on N. & S. sides
of 2 1/2 W. road
It is 37 inches
to piece running
S. of W. side of
N. & S. road
39 1/2 inches W.
2. Post of wood
running S. side

Set line stone 15 x 6 x 6
its center is 8 inches N. W.
of center of stone
by found corners (found)

Found real l.o.
12 x 7 x 4. It is
in general line
by former survey
from S. road
set by self in
former survey

The above is a record
of a survey made by
me on Dec 11 31
Johnston, for James
Mc Fay.
Jan 15 - 1905
Edward Rieger
Surveyor

Found line stone 5 x 10 x 15
on W. of stake along line
stone by 2 lines 2 h. h.
stones - set by self in
former survey

Set post post
15 1/2 inches
7 1/2 to 10 1/2

COUNTY SURVEYOR
RECORD 1859-1906