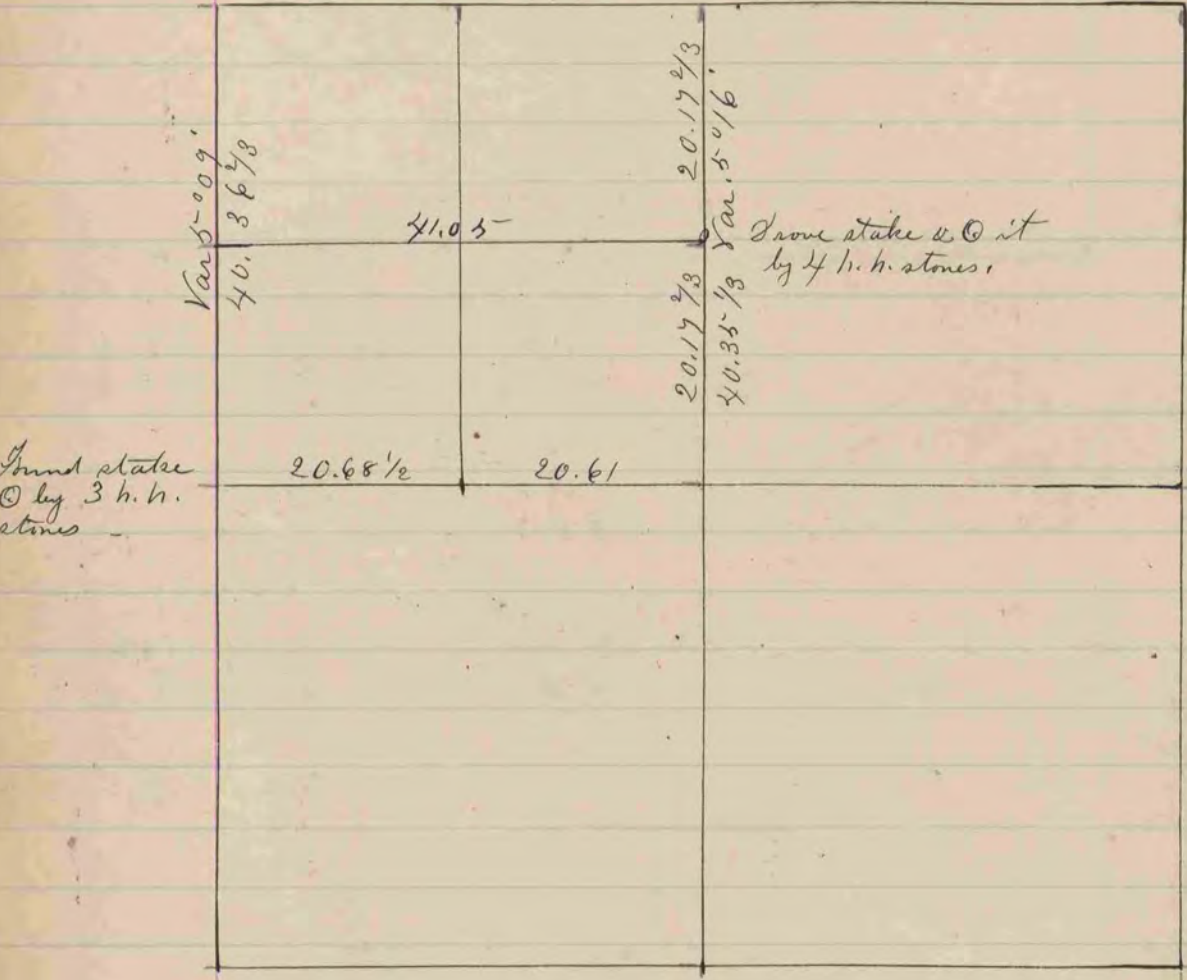


Found old stake set by Lorke
 also large h. h. stone by it -
 it agreed with old B. G. stump -
 left bottom of old stake in ground
 & set over it limestone $17\frac{1}{2} \times 8 \times 2\frac{1}{2}$
 & (C) by 4 large h. h. stones.



(See Page 127 of Vol 1st)

The above is a record & plat of a Survey made
 by me on Sec. 12 Spring Valley - May 24 1887

COUNTY SURVEYOR
 RECORD 1859-1906