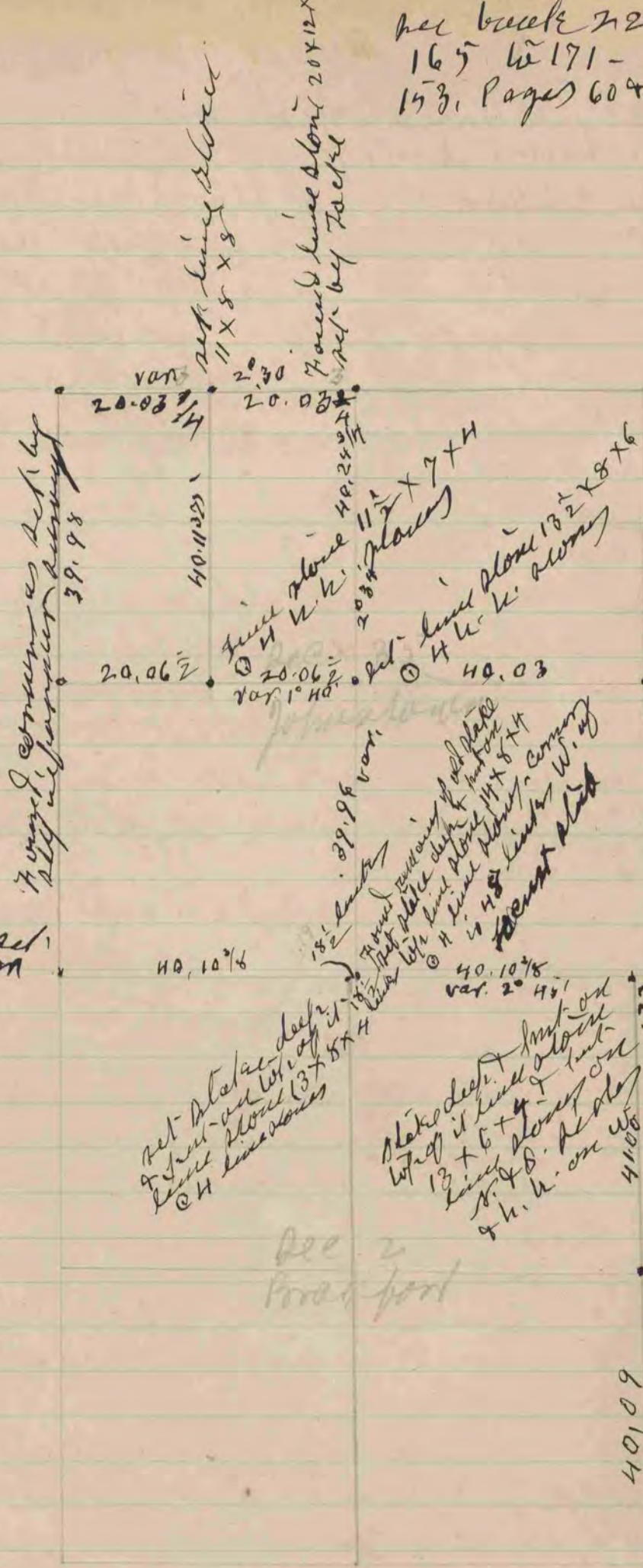


see back 22 pages  
165 to 171 - about book  
153. Pages 60 & 61

COUNTY SURVEYOR  
RECORD 1859-1906



Found corner as set by  
Wm. J. Johnson survey  
39.98

Found cor. as set  
by belt in former  
survey.

see field book 101  
pages 24 to 34  
in class

Set stake deep  
at front on lot of  
line about 13 x 8 x 4

Stake deep  
at front on lot of  
line about 13 x 8 x 4  
8.48. on  
h. h. on

Found remains  
of old stake  
about stake deep  
13 x 8 x 4  
on top

stake deep in  
face of old stake  
at front on lot of  
line about  
13 x 8 x 4  
small hole  
on N. E. corner

stake deep in  
face of old  
stake, front on  
lot of line  
about 14 x 8 x 4

This sheet is a survey made by  
me on sec. 25 Johnson. and  
Sec. 2 Bradford. Oct 4-1887  
and a survey made on sec. 35 Johnson  
Oct. 21- 1887

Edward Berger

Found old stake  
at front on lot of  
line about 13 x 8 x 4  
The corner of the  
lot of 2 x W. of N. 1/2  
of 2 x W. of N. 1/2