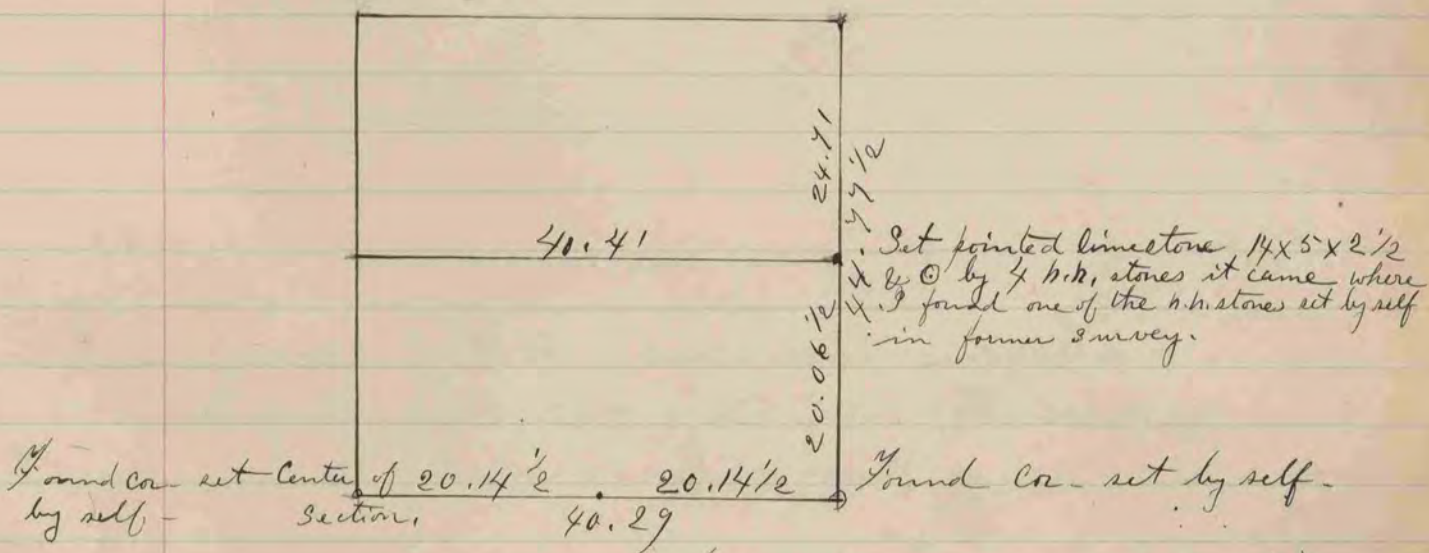


(See Page 293 of Vol 2nd)

The above is a record & plat of a survey made by me on the N.E. 1/4 of Sec. 10 Janesville Nov. 26th 1887



(See Page 775 of Vol 1st)

The above is a record & plat of a survey made by me on the N.E. 1/4 of Sec. 3 Janesville Dec. 11 & 12. 1886