

Paper weight-110# (minimum)

Black nonfading ink required

U.S. PUBLIC LAND SURVEY MONUMENT RECORD

For Public Land Survey Corners In:

WI ADMINISTRATIVE CODE A-E 7.08 REQUIREMENT

T. 4 N. R. 12 E. 4th P.M.

REV 10/23/2004

USMONREC.DWG

CORNER CODE INDEX

FULTON TWP
ROCK COUNTY WI

IF AVAILABLE
ROCK COUNTY COORDINATES PREFERRED

A	1	2	3	4	5	6	7	8	9	10	11	12	13	14	15	16	17	18	19	20	21	22	23	24	25	A
B		6				5				4				3				2			1					B
C																										C
D																										D
E																										E
F																										F
G																										G
H																										H
J																										J
K																										K
L																										L
M																										M
N																										N
O																										O
P																										P
Q																										Q
R																										R
S																										S
T																										T
U																										U
V																										V
W																										W
X																										X
Y																										Y
Z																										Z

North _____ Elev. _____

East _____

Hor. Datum _____ Vert. Datum _____

LATITUDE _____ ELLIPS. HT. _____

LONGITUDE _____

NAD83(91) _____ NETWORK ADJ. YR _____

GPS (X) _____ TRAVERSE (X) _____

BASED ON THE FOLLOWING CONTROL:

PLACE MONUMENT SYMBOL AT PROPER LOCATION ON ABOVE INDEX

CORNER MONUMENT

WITNESS MONUMENT

(a)

BEARINGS ARE BASED ON: _____

FIELD BOOK _____ PAGE # _____

SHEET 1 OF 3

SHOW A PLAN VIEW DRAWING DEPICTING THE CORNER MONUMENT AND SURROUNDING PHYSICAL FEATURES, INCLUDING THE EXCAVATION AREA AND DEPTH.

PLANNING & ZONING COMMITTEE ADOPTED THIS FORM ON 12/2/1982

CORNER CODE N-21

FU571 ^

(B) Describe any record evidence, monument evidence, occupational evidence, testimonial evidence or any other material evidence you considered, and whether the monument was found or placed.

- 1836 (JULY) BURNHAM NORTH BETWEEN SECTIONS 23 & 24
1282.38 BUR OAK 12 IN DIA
2640 SET ¼ SEC POST W. OAK 16 S28 ½W 50.82'? NO OTHER BEARING
NO STATIONS
5280 SET POST COR TO 13,14,23,24 BUR OAK 12 N5 ½E 25.08' BUR OAK 12 S14 ½W 16.5' FIRST RATE W. Y. & BUR OAK OPENINGS
- 1836 (JULY 10) BURNHAM NORTH BETWEEN SECTIONS 13 & 14
1667.82 BUR OAK 10 IN DIA
2343 TRAIL CROSSING NE & SW
2640 SET ¼ SEC POST BUR OAK 8 N25W 49.5' BUR OAK 10 S63W 56.1'
3383.82 BUR OAK 12 IN DI
5280 SET POST COR TO 11,12,13, &14 BUR OAK 12 S74 /12E 10.56' BUR OAK 12 N8W 33' FIRST RATE BUR OAK OPENINGS
- 1836 (JULY) BURNHAM EAST RANDOM BETWEEN SECS 14 & 23
2376 ENTER WILD MEADOW
2739 STREAM 13.2' S.W. & NW
3379.2 LEAVE WILD MEADOW
5240.4 INT EAST BOUNDY 9.9' N GODD SECOND RATE BUR OAK OPENINGS & WILD MEADOWS
WEST CORRECTED BETWEEN 14 & 23
NO STATION
2620.2 SET ¼ SEC POST WILLOW 6 S42 ½W 69.3' NO OTHER BEARING
5240.4 TO CORNERS
- 1836 (JULY 10) BURNHAM EAST RANDOM BETWN SEC 13 & 24 TAN R12E
5313 INT. RANGE LINE 54.12' SOUTH FIRST RATE W. Y. & BUR OAK OPENINGS
WEST CORRECTED BETWN 24 & 13
BUR OAK 12 IN DIA
2656.5 SET ¼ SEC POST BUR OAK 10 S3 ½E 19.8"? BUR OAK 8 N37W 19.8"?
NO STATIONS
5313 TO CORNERS
- JULY 10, 1836
- 1885 RUGER VOL 2 PG 383 FD LARGE POST ALSO FD SW BT VAR 5-32 2651.88 TO E ¼ COR SEC 23
- 188? RUGER #01332 DROVE POST & BEARING TREE. SOUTH 1339.14 TO 1/16TH COR A SANDSTONE 21X9X7 SURROUNDED BY 4 SMALL HH STONES, 3965.28 NORTH OF CENTER OF R/R. 11X9X6 L.S. ON NORTH SIDE OF R/R & 8X7X6 L.S. ON SOUTH SIDE OF R/R.
- 19?? ELY #1206 CALLS FOR COR BUT STATES NOTHING ABOUT IT SHOWS IT 68' WEST OF CENTER OF HWY
- 1938 DOT #11563,1564,7123,4721,5443,7124 STATES NOTHING ABOUT MON. SHOWS CENTER OF STH 51483' EAST OF SE COR SEC 14
- 1949 SUNNY #6548 & 1218 SET 2X36" PIPE 68.1 WEST OF CENTER OF RD. 2658 TO S ¼ COR SEC 14, 2660 TO E ¼ COR SEC 14, ANGLE 90-06-XX @ SE COR SEC 14 FROM S ¼ COR TO E ¼ CORNERS OF SEC 14
- 1975 NORTHROP CSM VOL 5 PG 165. FD 2" PIPE.
- 1975 NORTHROP #1202 FD 2" PIPE
- 1978 BARNES VOL 5 PG 486 FD 2X40 IP REPLACED WITH ALUM. 1.5' DEEP & REF. SAME. 6' WEST OF N/S FENCE & ON WEST SIDE OF RD.

Daniel Barnes

8-01-07

SHEET 1 OF 3
CORNER CODE N-21

FU571

1978 SCHROEDER CSM VOL 8 PG 166
STATES NOTHING ABOUT MON.

1990 BARNES VOL 6 PG 406 FD ALUM. MON. FROM NW COR SEC
24 S00-09-08W 1339.20 TO SANDSTONE & FROM NW COR
SEC 24 NB9-50-52W 2656.92 TO N 1/4 COR SEC 23.

FD ALUM. MON. 1.5' DEEP AND 3 REFERENCE PIPES. THE N/S
FENCE IS GONE & THE NORTHERN FARM FIELD ENTRANCE IS ALSO
GONE.

C) Was the corner restored through acceptance of (1) an obliterated evidence location, or, (2) a found perpetuated location?

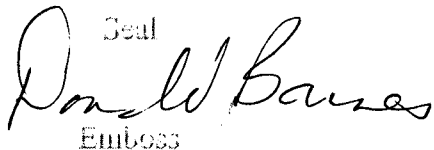
ACCEPTED FOUND PERPETUATED LOCATION.

D) Describe any material discrepancy between the location of the corner as restored or reestablished and the location of that corner as previously restored or reestablished by distance and direction. Show the discrepancy on the plan view drawing under (a), above. Show the distances between the corner as previously restored or reestablished and (1) the corner as restored or reestablished, and (2) to at least 4 of the witness monuments shown on the drawing in (a), above.

NONE

(E) Was the corner reestablished through lost corner proportionate methods? If so, show the method, including the directions and distances to other public land survey corners used as evidence or used for proportioning the corner location.

I, **Donald Barnes**, hereby certify that the corner location as identified by the corner code index was determined by me under my direction and control and that this U.S. Public Land Survey Monument Record is correct and complete to the best of my knowledge and belief.

Seal

Emboss

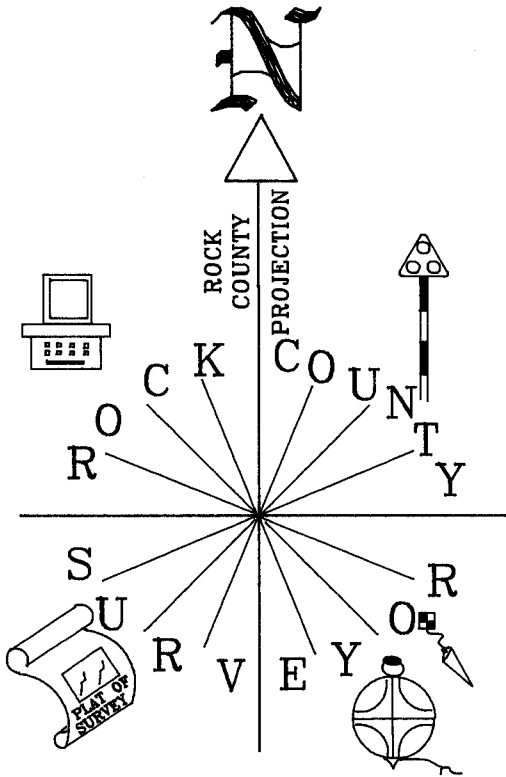
SHEET 2 OF 3

8-01-07

CORNER CODE

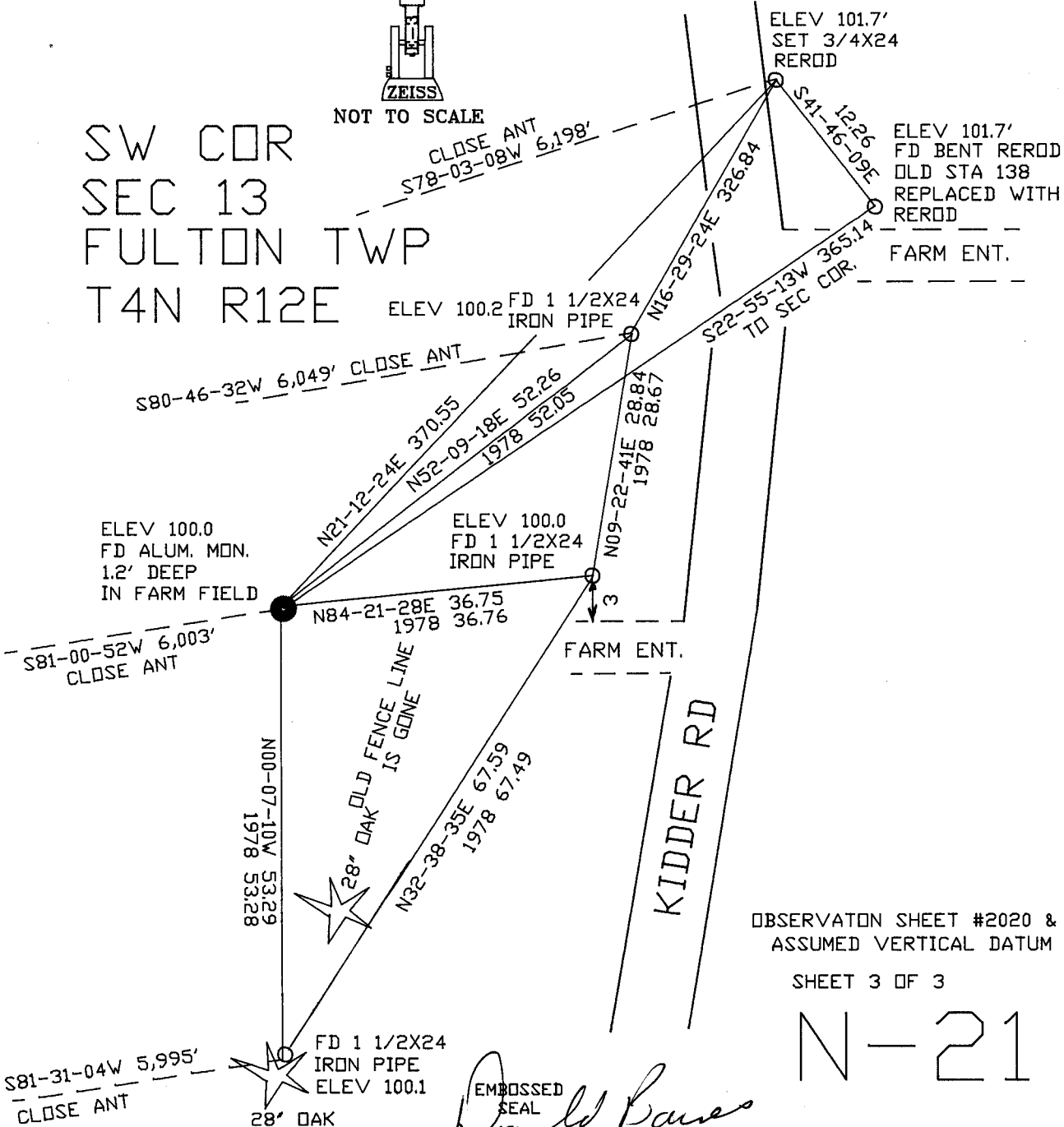
N-21

A.E. 7.08 REQUIREMENT



SW COR
 SEC 13
 FULTON TWP
 T4N R12E

NOT TO SCALE



OBSERVATION SHEET #2020 & #2021
 ASSUMED VERTICAL DATUM

SHEET 3 OF 3

N-21

Ronald Bauer
 EMBOSSED SEAL

2-01-07