

U.S. PUBLIC LAND SURVEY MONUMENT RECORD

For Public Land Survey Corners In:
T. 4 N. R. 12 E. 4th P.M.
CORNER CODE INDEX

WI ADMINISTRATIVE CODE A-E 7.08 REQUIREMENT
REV 10/23/2004 USMONREC.DWG

FULTON TWP

ROCK COUNTY WI

IF AVAILABLE
ROCK COUNTY COORDINATES PREFERRED

A	1	2	3	4	5	6	7	8	9	10	11	12	13	14	15	16	17	18	19	20	21	22	23	24	25	A
B																										B
C																										C
D																										D
E																										E
F																										F
G																										G
H																										H
J																										J
K																										K
L																										L
M																										M
N																										N
O																										O
P																										P
Q																										Q
R																										R
S																										S
T																										T
U																										U
V																										V
W																										W
X																										X
Y																										Y
Z																										Z

North _____ Elev. _____

East _____

Hor. Datum _____ Vert. Datum _____

LATITUDE _____ ELLIPS. HT. _____

LONGITUDE _____

NAD83(91) _____ NETWORK ADJ. YR _____

GPS (X) _____ TRAVERSE (X) _____

BASED ON THE FOLLOWING CONTROL:

PLACE MONUMENT SYMBOL AT PROPER LOCATION ON ABOVE INDEX

CORNER MONUMENT

WITNESS MONUMENT

BEARINGS ARE BASED ON: _____

FIELD BOOK _____ PAGE # _____

SHEET 1 OF 3

SHOW A PLAN VIEW DRAWING DEPICTING THE CORNER MONUMENT AND SURROUNDING PHYSICAL FEATURES, INCLUDING THE EXCAVATION AREA AND DEPTH.

PLANNING & ZONING COMMITTEE ADOPTED THIS FORM ON 12/2/1982

CORNER CODE L-21

FU559 ^

(B) Describe any record evidence, monument evidence, occupational evidence, testimonial evidence or any other material evidence you considered, and whether the monument was found or placed.

- 1836 (JULY 10) BURNHAM NORTH BETWEEN SECTIONS 13 & 14
1667.82 BUR OAK 10 IN DIA
2343 TRAIL CROSSING NE & SW
2640 SET 1/4 SEC POST BUR OAK 8 N25W 49.5' BUR OAK
10 S63W 56.1'
3383.82 BUR OAK 12 IN DI
5280 SET POST COR TO 11,12,13,&14
BUR OAK 12 S74 /12E 10.56' BUR OAK 12 NBW 33'
FIRST RATE BUR OAK OPENINGS
- 1949 SUNNY #1218 & 6548 SET 1 1/2" X 30" IRON PIPE. 2660.XX TO
SE COR SEC 14, ANGLE 90-06-XX @ SE COR SEC 14 FROM S
1/4 COR SEC 14 TO E 1/4 COR SEC 14, 2569 TO GEN SEC 14.
MAP SHOWS COR NEAR EAST EDGE OF RD.
- 1974 HELD #1205 FD PIPE 2654.39 TO NW COR SEC 13, 2684.74
TO GEN SEC 13, 5361.94 TO E 1/4 COR SEC 13, & ANGLE 88-
28-34 @ W 1/4 COR SEC 13 FROM NW COR SEC 13 TO E 1/4 COR
SEC 13.
- 1975 NORTROP CSM VOL 5 PG 165 FD 1 1/2" PIPE
1975 NORTROP #1202 1 1/2" IRON PIPE FOUND. SET 1" IRON
PIPE 717.23 (REC 717.4) SOUTH.
- 1979 SCHROEDER #1213 STATES NOTHING ABOUT MON. N88-44-
24E 1342.37 TO 1/16TH COR, SOUTH 2658.93 TO SW COR
SEC 13, & ANGLE 91-15-36 @ W 1/4 COR SEC 13 FROM 1/16TH
COR TO SW COR SEC 13, & ANGLE 88-41-XX @ SW COR SEC
13 FROM W 1/4 COR SEC 13 TO S 1/16TH COR OF SW 1/4 SEC 13
- 1981 SCHROEDER CSM VOL 10 PG 273 STATES NOTHING ABOUT
MON. 1027.23 NORTHERLY OF CENTER OF MERRIFIELD DR.
- 1984 SCHROEDER #13989 CALLS FOR E 1/4 COR SEC 14
BUT STATES NOTHING ABOUT IT.
- 1988 SHROEDER #12662 & 12594 CALLS FOR COR BUT STATES
NOTHING ABOUT IT. ANGLE 91-03-35 @ NW COR
SEC 13 FROM N 1/4 COR SEC 13 TO W 1/4 COR SEC 13.
- 1988 SCHROEDER #12596 & 12591 STATES NOTHING ABOUT TYPE
OF MON. 1377.37 TO S 1/16TH COR OF NW 1/4 OF SEC 13.
- 1995 LATHROP CSM VOL 18 PG 390 FD PIPE 2654.18 TO NE
COR SEC 14
- 1988 LATHROP #8183 FD PIPE. MAP SHOWS IT ABOUT 41.0 EAST
OF CENTER OF RD. 2522.60 TO MP @ LEFT BANK OF ROCK
RIVER ON E/W 1/4 LINE OF SEC 14

FD 2" IRON PIPE. SET CARSONITE POST 0.4' ON SE SIDE OF PIPE;
TREASPASSING SIGN 0.4' NORTH SIDE OF PIPE. 6' WEST OF N/S
SIDE OF FENCE.

C) Was the corner restored through acceptance of (1) an obliterated evidence location, or, (2) a found perpetuated location?

ACCEPTED FD PIPE.

D) Describe any material discrepancy between the location of the corner as restored or reestablished and the location of that corner as previously restored or reestablished by distance and direction. Show the discrepancy on the plan view drawing under (a), above. Show the distances between the corner as previously restored or reestablished and (1) the corner as restored or reestablished, and (2) to at least 4 of the witness monuments shown on the drawing in (a), above.

NONE

Donald B. Lucas

Aug 29, 2007

SHEET 1 OF 3

CORNER CODE L-21

FU559

(E) Was the corner reestablished through lost corner proportionate methods? If so, show the method, including the directions and distances to other public land survey corners used as evidence or used for proportioning the corner location.

NO

I, **Donald Barnes**, hereby certify that the corner location as identified by the corner code index was determined by me under my direction and control and that this U.S. Public Land Survey Monument Record is correct and complete to the best of my knowledge and belief.

Donald
Barnes
Aug 29, 2007
Seal
Emboss

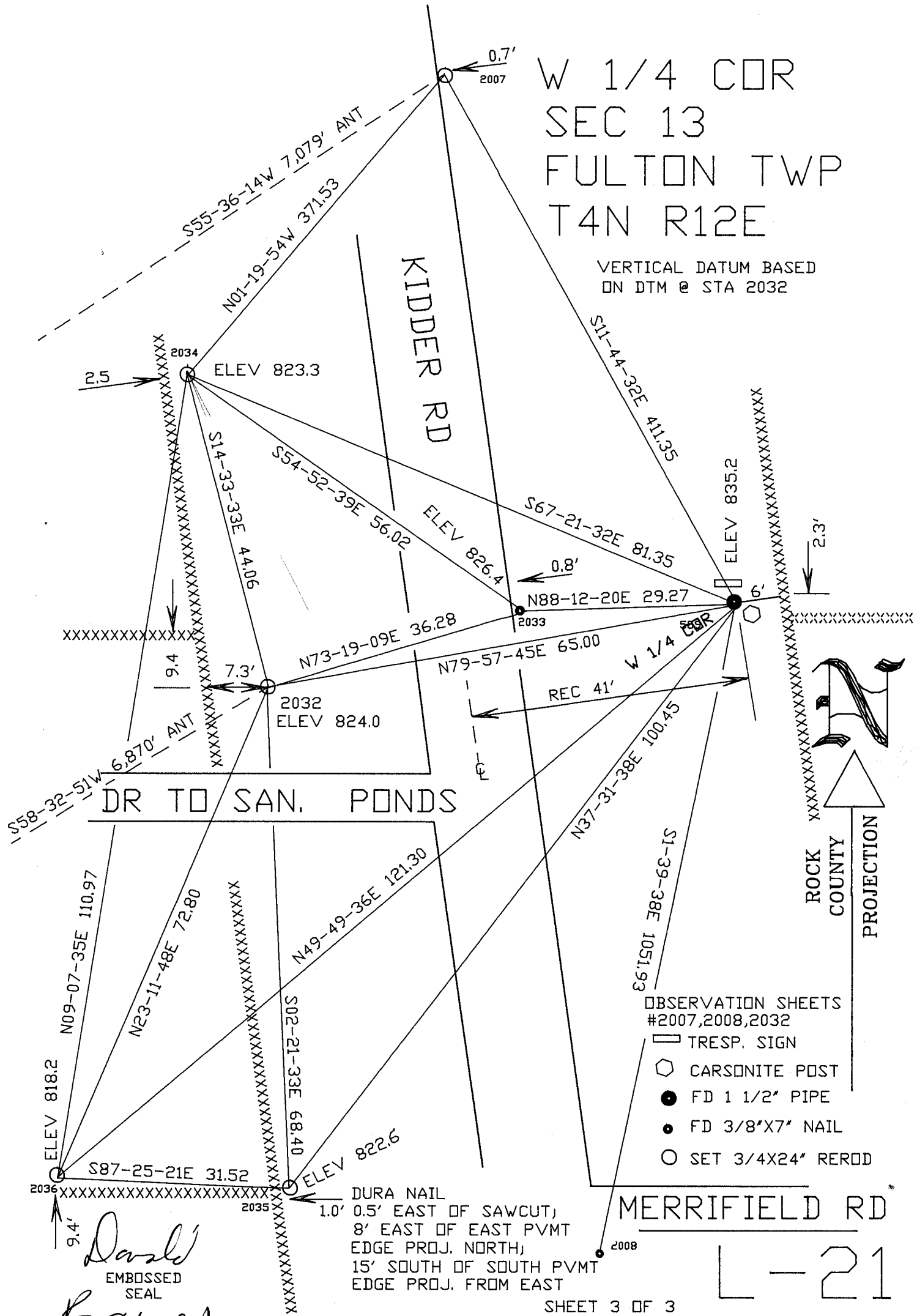
SHEET 2 OF 3

CORNER CODE **L-21**

A.E. 7.08 REQUIREMENT

W 1/4 COR
 SEC 13
 FULTON TWP
 T4N R12E

VERTICAL DATUM BASED
 ON DTM @ STA 2032



David
 EMBOSSED
 SEAL
Carver
 Aug 29, 2007

DURA NAIL
 0.5' EAST OF SAWCUT,
 8' EAST OF EAST PVMT
 EDGE PROJ. NORTH,
 15' SOUTH OF SOUTH PVMT
 EDGE PROJ. FROM EAST

MERRIFIELD RD

L-21