

# U.S. PUBLIC LAND SURVEY MONUMENT RECORD

For Public Land Survey Corners In:  
T. 4N. R. 12 E. 4th P.M.  
CORNER CODE INDEX

WI ADMINISTRATIVE CODE A-E 7.08 REQUIREMENT  
REV 10/23/2004 USMONREC.DWG

A	1	2	3	4	5	6	7	8	9	10	11	12	13	14	15	16	17	18	19	20	21	22	23	24	25	A
B																										B
C	6						5					4					3				2				1	C
D																										D
E																										E
F																										F
G	7						8					9					10				11				12	G
H																										H
J																										J
K	18						17					16					15				14				13	K
L																										L
M																										M
N																										N
O																										O
P	19						20					21					22				23				24	P
Q																										Q
R																										R
S																										S
T	30						29					28					27				26				25	T
U																										U
V																										V
W																										W
X	31						32					33					34				35				36	X
Y																										Y
Z																										Z

FULTON TWP  
ROCK COUNTY WI

IF AVAILABLE  
ROCK COUNTY COORDINATES PREFERRED

North \_\_\_\_\_ Elev. \_\_\_\_\_

East \_\_\_\_\_

Hor. Datum \_\_\_\_\_ Vert. Datum \_\_\_\_\_

LATITUDE \_\_\_\_\_ ELLIPS. HT. \_\_\_\_\_

LONGITUDE \_\_\_\_\_

NAD83(91) \_\_\_\_\_ NETWORK ADJ. YR \_\_\_\_\_

GPS (X) \_\_\_\_\_ TRAVERSE (X) \_\_\_\_\_

BASED ON THE FOLLOWING CONTROL:

PLACE MONUMENT SYMBOL  AT PROPER LOCATION ON ABOVE INDEX

CORNER MONUMENT

WITNESS MONUMENT

(a) BEARINGS ARE BASED ON: \_\_\_\_\_

FIELD BOOK \_\_\_\_\_ PAGE # \_\_\_\_\_

SHEET 1 OF 2

SHOW A PLAN VIEW DRAWING DEPICTING THE CORNER MONUMENT AND SURROUNDING PHYSICAL FEATURES, INCLUDING THE EXCAVATION AREA AND DEPTH.

PLANNING & ZONING COMMITTEE ADOPTED THIS FORM ON 12/2/1982

CORNER CODE 0/P-5

FU\_M.P.649

(B) Describe any record evidence, monument evidence, occupational evidence, testimonial evidence or any other material evidence you considered, and whether the monument was found or placed.

1834 (MAR/APR) HARRISON NORTH BETWEEN SECS 19 & 20  
3410.22 LEAVE ROCK RIVER AND SET MEANDER POST ON  
RIGHT BANK OF SAME. {WHITE O 20 N73W 145.86'  
BURR O 20 N4E 92.4'  
4950 TRAIL N.E.  
5280 SET COR TO SECS 17, 18, 19, 20  
RED O 18 S78W 33' BURR O 8 S30E 36.3' RED O 12  
N86E 33' BURR O 10 N14W 44.88' LAND ROLLING  
2<sup>ND</sup> RATE TIMBER RED O & BURR O ? GRASS &  
WEEDS  
1836 (AUG 2) BURNHAM NORTH BETWEEN SECS 19 & 20  
2772 TRAIL @ NE & SW  
2838 TO LEFT BANK OF ROCK RIVER 2,14'  
3476.88 INT. RIGHT BANK 213.84' ? W. OF THE M.P. FIRST  
RATE W, Y, & BUR OAK OPENINGS  
SOUTH CORRECTED BETWN SECS 20 & 19  
623.7 SET MP ON LEFT BANK BUR OAK 18 S65W 16.5' W  
OAK 16 S51E 83.16'  
836.88 SET 1/4 SEC POST Y OAK 12 N32 1/2E 16.5' Y OAK  
12 S25W 25.08'  
TO CORNERS AUG. 2 1836  
1949 SUNNY #1415,6565,6566 S3-37W 2862 TO NW COR SEC 29  
1971 LEE VOL 4 PG 536 CAPPED PIPE MEANDER 291,591.98;  
2,238,535.37 WP&L  
1975 WPL #1295 & VOL 6 PG 301 291,591.98; 2,238,535.37 NO-  
49-18E 671.57 TO MC., S2-50-37W 2861.20 TO SE COR SEC  
19  
1983 BARNES P-5 CAPPED IRON PIPE. 213.18 TO E 1/4 COR SEC 19  
& ON LINE WITH SE & E 1/4 CORNERS SEC 19.  
291,593.77; 2,238,535.96  
1997 LOGAN CSM VOL 20 PG 75 & BK 32 PG 357 "RIVER PINES  
SUB" FD CAPPED 2" PIPE 35' SOUTH OF RIVER BANK 213.13  
N4-09-24E OF W 1/4 COR SEC 20, & ANGLE 179-53-24 @ W 1/4  
COR SEC 20 FROM MP TO SW COR SEC 20

FD CAPPED GAS PIPE IN N/S FENCE. SET CARSONITE POST.

C) Was the corner restored through acceptance of (1) an obliterated evidence location, or, (2) a found perpetuated location?

ACCEPTED GAS PIPE

D) Describe any material discrepancy between the location of the corner as restored or reestablished and the location of that corner as previously restored or reestablished by distance and direction. Show the discrepancy on the plan view drawing under (a), above. Show the distances between the corner as previously restored or reestablished and (1) the corner as restored or reestablished, and (2) to at least 4 of the witness monuments shown on the drawing in (a), above.

NONE

(E) Was the corner reestablished through lost corner proportionate methods? If so, show the method, including the directions and distances to other public land survey corners used as evidence or used for proportioning the corner location.

NO

I, **Donald Barnes**, hereby certify that the corner location as identified by the corner code index was determined by me under my direction and control and that this U.S. Public Land Survey Monument Record is correct and complete to the best of my knowledge and belief.

Seal  


Emboss

3/22/06

SHEET 1 OF 2

CORNER CODE

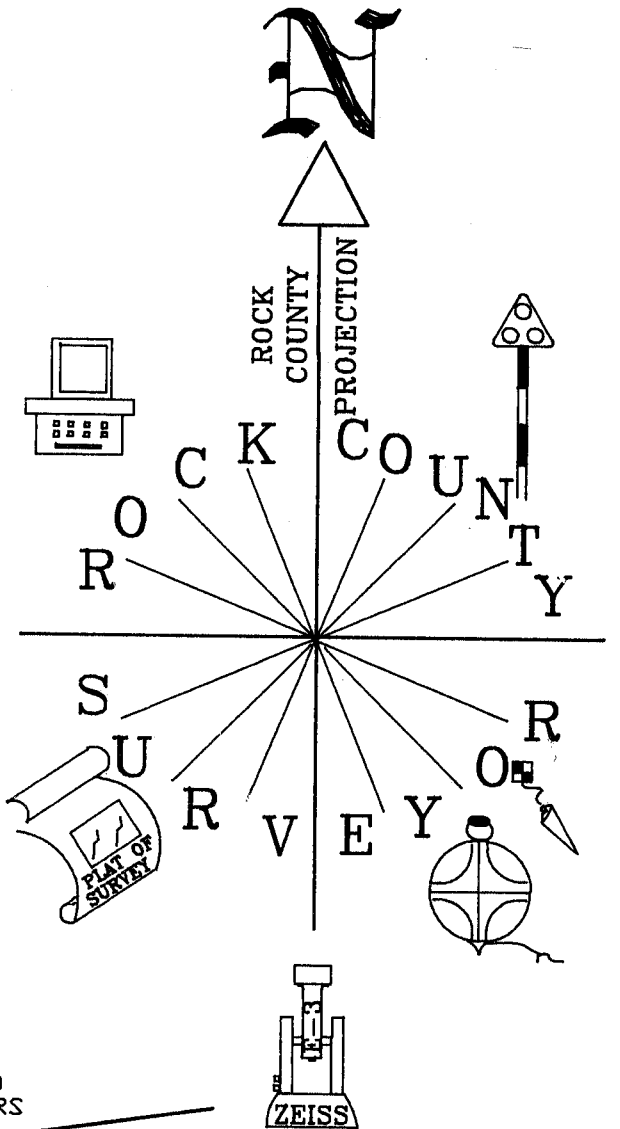
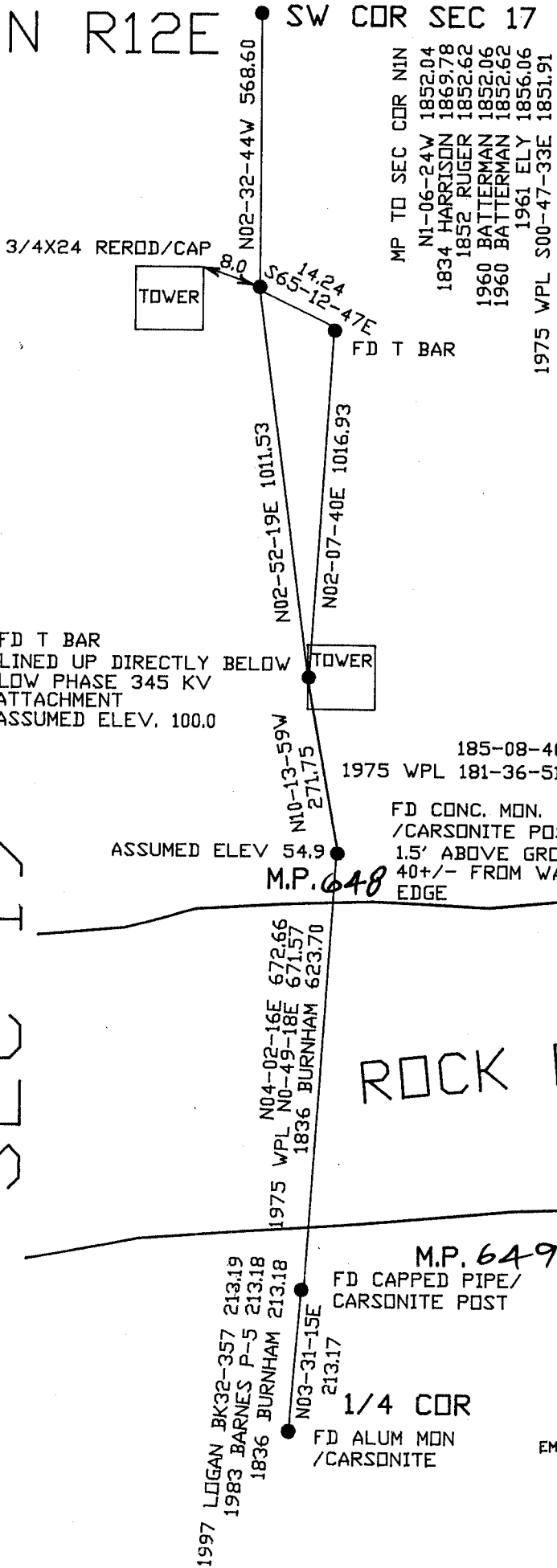
**O/P-5**

A.E. 7.08 REQUIREMENT

FULTON TWP CTH M  
T4N R12E SW COR SEC 17

SEC 19

SEC 20



NOT TO SCALE  
OBSERVATION SHEET #212

EMBOSSED SEAL

SHEET 2 OF 2

*Donald Barnes*  
3/22/06

O/P - S