

U.S. PUBLIC LAND SURVEY MONUMENT RECORD

For Public Land Survey Corners In:

WI ADMINISTRATIVE CODE A-E 7.08 REQUIREMENT

T. 4 N. R. 12 E. 4th P.M.

REV 10/23/2004

USMONREC.DWG

CORNER CODE INDEX

A	1	2	3	4	5	6	7	8	9	10	11	12	13	14	15	16	17	18	19	20	21	22	23	24	25	A
B																										B
C																										C
D																										D
E																										E
F																										F
G																										G
H																										H
J																										J
K																										K
L																										L
M																										M
N																										N
O																										O
P																										P
Q																										Q
R																										R
S																										S
T																										T
U																										U
V																										V
W																										W
X																										X
Y																										Y
Z																										Z

1 2 3 4 5 6 7 8 9 10 11 12 13 14 15 16 17 18 19 20 21 22 23 24 25
PLACE MONUMENT SYMBOL AT PROPER LOCATION ON ABOVE INDEX

FULTON TWP

ROCK COUNTY WI

IF AVAILABLE
ROCK COUNTY COORDINATES PREFERRED

North _____ Elev. _____

East _____

Hor. Datum _____ Vert. Datum _____

LATITUDE _____ ELLIPS. HT. _____

LONGITUDE _____

NAD83(91) _____ NETWORK ADJ. YR _____

GPS (X) _____ TRAVERSE (X) _____

BASED ON THE FOLLOWING CONTROL:

CORNER MONUMENT

WITNESS MONUMENT

(a) BEARINGS ARE BASED ON: _____

FIELD BOOK _____ PAGE # _____

SHEET 1 OF 4

SHOW A PLAN VIEW DRAWING DEPICTING THE CORNER MONUMENT AND SURROUNDING PHYSICAL FEATURES, INCLUDING THE EXCAVATION AREA AND DEPTH.

PLANNING & ZONING COMMITTEE ADOPTED THIS FORM ON 12/2/1982

CORNER CODE N-24

FU1562

(B) Describe any record evidence, monument evidence, occupational evidence, testimonial evidence or any other material evidence you considered, and whether the monument was found or placed.

1834 (APR) HARRISON WEST ON RANDOM BET 18 & 19
1773.42 ROAD N.E.
2467.08 TRAIL N
2640 TEMPY ¼ SEC COR & ENTER BOTTOM OF CREEK
3729 INT. LEFT BANK OF CATFISH CREEK SET GUIDE P
3861 LEAVE SAME SET GUIDE P & LEAVE BOTTOM
4712.4 TRAIL N.E.
5295.84 INT. WEST BDY 11.88' N OF P
LAND & SAME AS BEFORE
COR EAST BET 18 & 19
1419 SET MEAN POST RIGHT BANK OF CATFISH {BURR O
12 S44W 143.88' RED O 8 N20W 126.72'
1551 LEAVE SAME SET MEAND P. ON LEFT BANK {BURR O
18 S45E 143.88'
2655.84 QUARTER SEC. CORNER {BUR O 8 N9E 66' BURR O
12 S72E 126.72'
5295.84 INT. SEC COR.
1960 BATTERMAN VOL 4 PG 13 SET R.R SPIKE AT N.W. COR GOV'T
LOT 1, CALLS FOR 1319.30 TO CONC. MON AT N ¼ COR SEC
19, 1319.30 TO R.R SPIKE AT NE COR SEC 19. SET 1" PIPE 33
TO THE SOUTH AND PIPE 60 TO THE EAST. THE 2 REFERENCE
PIPES HAVE AN ANGLE OF 90-07 AT 1/16TH COR. NOTE:
11/20/1975 WPL COORDINATES 294,072.93'; 2,237,200.75'
DIAGRAM SHOWS CORNER IN CTH M
1960 BATTERMAN #1293 2638.60 FROM NE TO N ¼ COR SEC 19,
1960 ELY #1296 EAST OF STEEL SPIKE. 1319.30 TO NE COR
SEC 19
1961 ELY #1297 FROM NE COR SEC 19 SO-13W 1856.06 TO CONC.
MON. @ MP, N89-53E 1319.30 TO NE COR SEC 19
1966 BATTERMAN VOL 4 PG 293 1319.30' TO N ¼ COR SEC 19 &
1319.30 TO NE COR SEC 19.
1970 BATTERMAN VOL 4 PG 467 N.W. COR OF THE E ½ OF THE N.E.
¼ SEC 19-4012 ALSO N.W. COR OF GOV'T 1 R.R. SPIKE SET
3- 1" IRON PIPES TO THE SOUTH AND ON LINE ON WEST SIDE
OF GRAVEL DRIVE AND 5.7' EAST OF N/S FENCE. 1319.30' TO
THE N ¼ COR SEC 19. IN CTH M
1973 LEE #1286 2638.60 FROM SE COR SEC 18 TO S ¼ COR SEC
18
1975 WPL #1287,1306 & 1267 N88-09-49E 1319.32 TO SE COR
OF SEC 18, SO-47-33E 1851.91 FROM SE COR SEC 18 TO M.C
1982 SCHROEDER #1277 ANGLE 90-00-14 FROM S ¼ COR SEC
18 TO E ¼ COR SEC 18

FD C.I. PLUG IN CONCRETE & REFERENCE MONUMENTS. THE
FARTHEST SOUTH PIPE IS IN EXCELLENT CONDITION. THIS PIPE IS
NOT PINCHED. THE PINCHED PIPE IS LEANING. THE PIN IS
LEANING AND APPEARS TO BE A REPLACEMENT FOR THE PIPE OF
RECORD. I DID NOT FIND A RECORD OF THE CI PLUG BUT SINCE IT
IS NOT IN THE PAVEMENT IT MUST OF HAVE BEEN PLACED AFTER
THE RELOCATION OF CTH M.

SHEET 1 OF

CORNER CODE N-4

Dwight Barnes

12-16-05

FU1562

C) Was the corner restored through acceptance of (1) an obliterated evidence location, or, (2) a found perpetuated location?

I DID NOT ACCEPT THE FOUND PLUG. I ACCEPTED THE POSITION AS PERPETUATED BY THE REFERENCE MONUMENTS.

D) Describe any material discrepancy between the location of the corner as restored or reestablished and the location of that corner as previously restored or reestablished by distance and direction. Show the discrepancy on the plan view drawing under (a), above. Show the distances between the corner as previously restored or reestablished and (1) the corner as restored or reestablished, and (2) to at least 4 of the witness monuments shown on the drawing in (a), above.

THE C.I. PLUG IS NOT IN HARMONY WITH THE REFERENCE MONUMENTS.

(E) Was the corner reestablished through lost corner proportionate methods? If so, show the method, including the directions and distances to other public land survey corners used as evidence or used for proportioning the corner location.

NO

I, **Donald Barnes**, hereby certify that the corner location as identified by the corner code index was determined by me under my direction and control and that this U.S. Public Land Survey Monument Record is correct and complete to the best of my knowledge and belief.

Seal

SHEET 2 OF

Donald Barnes
12-16-05

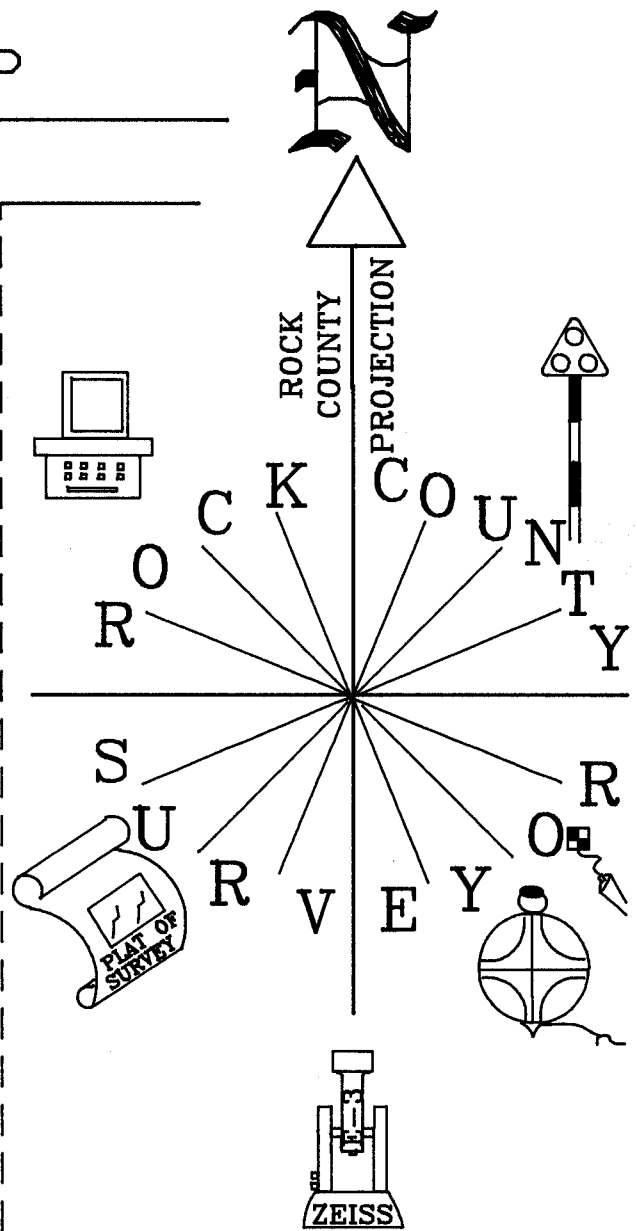
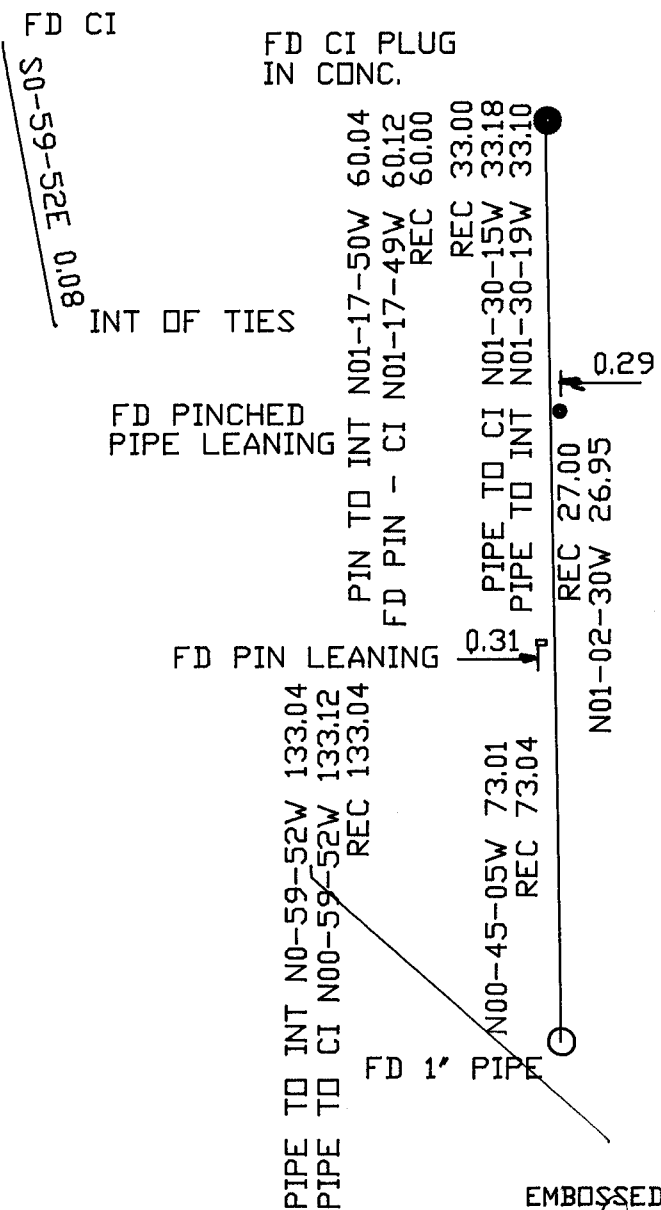
CORNER CODE

N-24

A.E. 7.08 REQUIREMENT

1/16TH COR
 SEC 18
 FULTON TWP

CTH M



EMBOSSSED SEAL
Donald Barnes
 12-16-05