

# U.S. PUBLIC LAND SURVEY MONUMENT RECORD

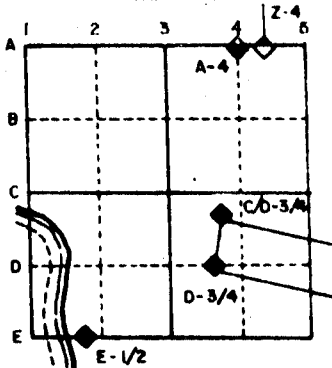
For Public Land Survey Corners in the  
T. 4 N., R. 12 E

## CORNER CODE INDEX

	1	2	3	4	5	6	7	8	9	10	11	12	13	14	15	16	17	18	19	20	21	22	23	24	25
A																									
B	6	5	4	3	2																				
C																									
D																									
E																									
F																									
G	7	8	9	10	11	12																			
H																									
I																									
J																									
K	18	17	16	15	14	13																			
L																									
M																									
N																									
O																									
P																									
Q	19	20	21	22	23	24																			
R																									
S																									
T	30	29	28	27	26	25																			
U																									
V																									
W																									
X																									
Y	31	32	33	34	35	36																			
Z																									

PLACE MONUMENT SYMBOL (◆) AT PROPER LOCATION ON ABOVE INDEX

### EXAMPLE



FULTON TWP  
ROCK COUNTY WI

IF AVAILABLE  
STATE PLANE COORDINATES

North (Y) \_\_\_\_\_ Eleve. (Z) \_\_\_\_\_  
 East (X) \_\_\_\_\_ Zone \_\_\_\_\_  
 Hor. Datum \_\_\_\_\_ Vert. Datum \_\_\_\_\_

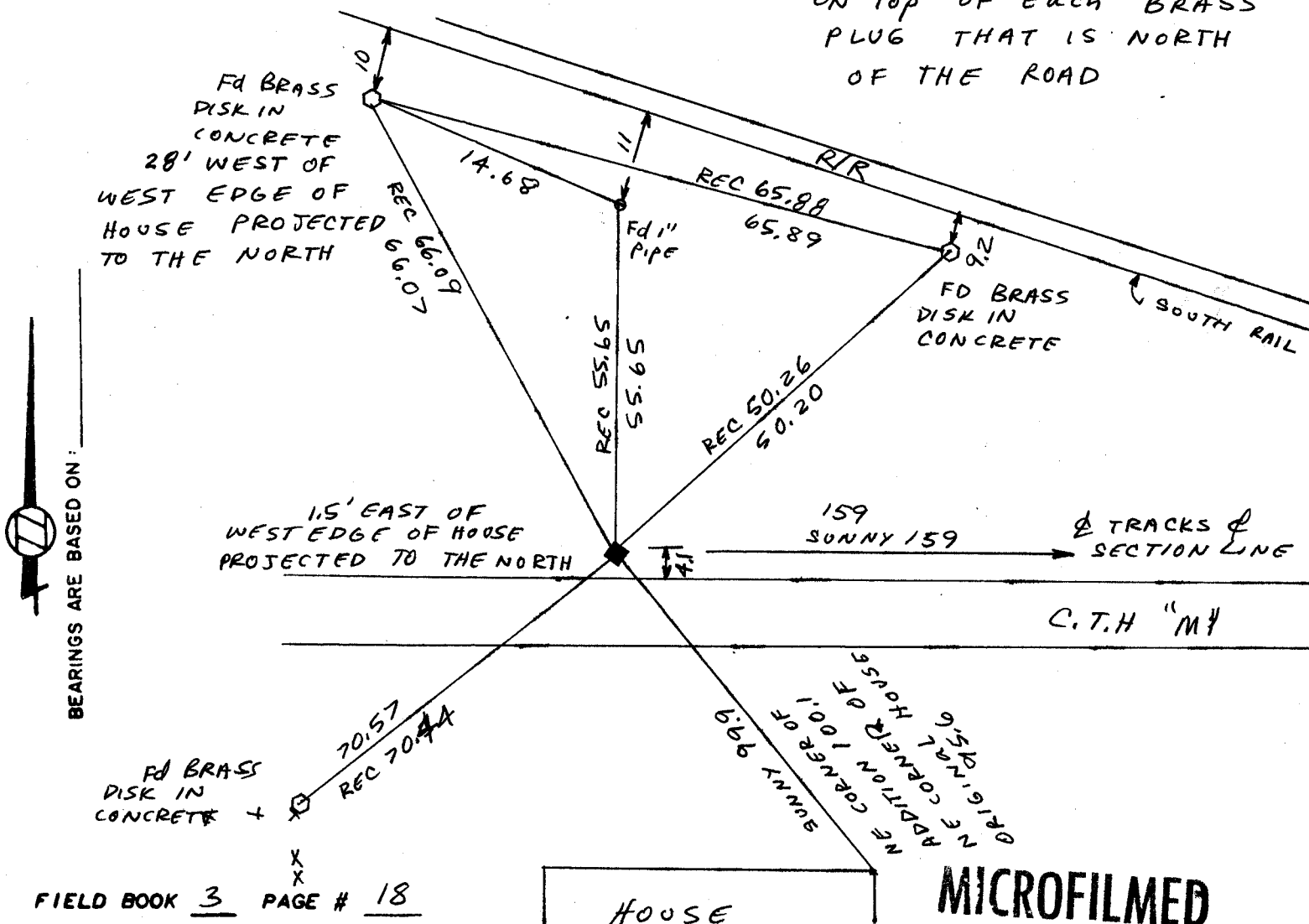
(a.)

◆ CORNER MONUMENT

○ WITNESS MONUMENT

ALUMINUM MONUMENT  
0.5' DEEP

PLACED R/R BASE PLATES  
ON TOP OF EACH BRASS  
PLUG THAT IS NORTH  
OF THE ROAD



FIELD BOOK 3 PAGE # 18

MICROFILMED

SHOW A PLAN VIEW DRAWING DEPICTING THE CORNER MONUMENT AND SURROUNDING PHYSICAL FEATURES, INCLUDING THE EXCAVATION AREA AND DEPTH. THE CORNER MONUMENT SHALL HAVE THE FOLLOWING CHARACTERISTICS: 1) HAVE AT LEAST TWO PREDETERMINED BREAK-OFF POINTS. 2) IF BROKEN, LEAVE A PERMANENTLY MAGNETIZED REMNANT AT THE ORIGINAL POINT. 3) MUST BE EXTENDABLE. 4) THE CAP IS INSCRIBED - ROCK COUNTY SURVEY MONUMENT - PENALTY FOR DISTURBING MARKER. 5) OR AN EXISTING CUT LIMESTONE. AN IRON PIPE 1 1/2" x 4'0" (MINIMUM) MAY BE USED IN AREAS WHERE GROUND WATER IS WITHIN ONE FOOT OF THE SURFACE. IF THE CORNER IS OCCUPIED BY AN IMPROVEMENT (MANHOLE, BURIED CABLE, ETC.) ANY DURABLE, DISTINCT MONUMENT MAY BE USED. CORNERS SHALL BE REFERENCED WITH AT LEAST 4 DURABLE WITNESS MONUMENTS. WITNESS MONUMENTS SHALL BE MADE OF CONCRETE, NATURAL STONE, IRON OR OTHER EQUALLY DURABLE MATERIAL, EXCEPT WOOD. DESCRIBE THE CORNER AND THE WITNESS MONUMENTS.

CORNER CODE:  
R 23

(b.) Describe any record evidence, monument evidence, occupational evidence, testimonial evidence or any other material evidence you considered, and whether the monument was found or placed.

1864 LOCKE VOL 1 PG 220 FOUND STUMPS OF B. TREE & OLD STAKE.  
SET PIECE OF R/R IRON (I RAIL) 20" LONG.  
18?? BLEEDHORN VOL 2 PG 501 MAPS SHOWS A I RAIL 20" LONG.  
1938 SUNNY VOL 3 PG 395 FOUND 4 1/2" RAIL AT CORNER 24"  
LOW. SET 1"X 24" PIPE ON TOP.  
1940 SUNNY VOL 3 PG 395 SET A 1 /2"x24" CAPPED PIPE ON TOP FOR  
CORNER.  
1969 BECKER (DOT) VOL 5 PG 513 NOTES A 1/2" CAPPED IRON PIPE  
WITH REFERENCE MONUMENTS.  
1970 BATTERMAN JR. VOL 4 PG 333 FOUND CAPPED 1 1/5" PIPE BY  
SUNNY AND IS REFERENCED.  
I FOUND A 1" PIPE 0.5' DEEP AND REFERENCE MONUMENTS.  
REPLACED PIPE WITH AN ALUMINUM MONUMENT.

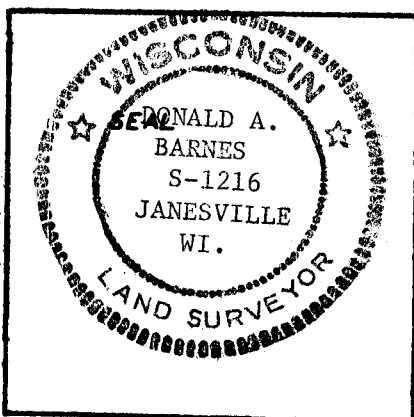
(c.) Was the corner restored through acceptance of (1) an obliterated evidence location, or, (2) a found perpetuated location?

CORNER WAS RESTORED THROUGH ACCEPTANCE OF FOUND PERPETUATED LOCATION.

(d.) Describe any material discrepancy between the location of the corner as restored or reestablished and the location of that corner as previously restored or reestablished by distance and direction. Show the discrepancy on the plan view drawing under (a), above. Show the distances between the corner as previously restored or reestablished and (1) the corner as restored or reestablished, and (2) to at least 4 of the witness monuments shown on the drawing in (a), above.

(e.) Was the corner reestablished through lost corner proportionate methods? If so, show the method, including the directions and distances to other public land survey corners used as evidence or used for proportioning in determining the corner location.

I, Ronald Barnes, hereby certify that the corner points as identified by the corner code index were, in a field survey on May 16, 1988, established, re-established, monumented, re-monumented, recovered or restored as expressed below and in conformance with the regulations and rules as required in the current manual of survey instructions of the United States Department of Interior, Bureau of Land Management.



COUNTY SURVEYOR FILING DATA

Date of Computer Entry \_\_\_\_\_

Date Received \_\_\_\_\_

Date Microfilmed \_\_\_\_\_

Treasurer's Receipt No. \_\_\_\_\_

Number of Included Sheets \_\_\_\_\_

AFFIX YOUR LAND SURVEYOR SEAL.

CORNER CODE R23