

Paper weight-110# (minimum)

Black nonfading ink required

# U.S. PUBLIC LAND SURVEY MONUMENT RECORD

For Public Land Survey Corners In:

WI ADMINISTRATIVE CODE A-E 7.08 REQUIREMENT

T. 4 N. R. 12 E. 4th P.M.

REV 10/23/2004

USMONREC.DWG

### CORNER CODE INDEX

1	2	3	4	5	6	7	8	9	10	11	12	13	14	15	16	17	18	19	20	21	22	23	24	25	
A																									A
B	6					5					4				3					2				1	B
C																									C
D																									D
E																									E
F																									F
G	7					8				9				10					11				12		G
H																									H
J																									J
K																									K
L	18					17				16				15					14				13		L
M																									M
N																									N
O																									O
P	19					20				21				22					23				24		P
Q																									Q
R																									R
S																									S
T	30					29				28				27					26				25		T
U																									U
V																									V
W																									W
X	31					32				33				34					35				36		X
Y																									Y
Z																									Z

FULTON TWP  
ROCK COUNTY WI

IF AVAILABLE  
ROCK COUNTY COORDINATES PREFERRED

North \_\_\_\_\_ Elev. \_\_\_\_\_

East \_\_\_\_\_

Hor. Datum \_\_\_\_\_ Vert. Datum \_\_\_\_\_

LATITUDE \_\_\_\_\_ ELLIPS. HT. \_\_\_\_\_

LONGITUDE \_\_\_\_\_

NAD83(91) \_\_\_\_\_ NETWORK ADJ. YR \_\_\_\_\_

GPS (X) \_\_\_\_\_ TRAVERSE (X) \_\_\_\_\_

BASED ON THE FOLLOWING CONTROL:

PLACE MONUMENT SYMBOL  AT PROPER LOCATION ON ABOVE INDEX

CORNER MONUMENT

WITNESS MONUMENT

BEARINGS ARE BASED ON: (a) \_\_\_\_\_

FIELD BOOK \_\_\_\_\_ PAGE # \_\_\_\_\_

SHEET 1 OF 4

SHOW A PLAN VIEW DRAWING DEPICTING THE CORNER MONUMENT AND SURROUNDING PHYSICAL FEATURES, INCLUDING THE EXCAVATION AREA AND DEPTH.

PLANNING & ZONING COMMITTEE ADOPTED THIS FORM ON 12/2/1982

CORNER CODE 5-23

FU552^

(B) Describe any record evidence, monument evidence, occupational evidence, testimonial evidence or any other material evidence you considered, and whether the monument was found or placed.

- 1836 JULY BURNHAM EAST RANDOM BET SECS 12 & 13  
2211 TRAIL @N.E.  
5313 INT. EAST BOUNDRY 26.4' NORTH  
FIRST RATE W.Y. & BUR OAK OPENINGS  
WEST CORRECTED BETWN 13 & 12  
2656.5 SET 1/4 SEC POST BUR O. 10 S60W 34.98'; BUR O.  
12 N5W 29.7'  
?????? YELLOW OAK 14 IN. DIA.  
5213 TO CORNERS
- 1961 BATTERMAN #1165 CALLS FOR THE N/S CENTERLINE OF SEC  
12 AS A MEAN LINE BETWEEN E & W SEC LINES. ANGLE 90-  
26-50 @ N 1/4 FROM N/W CENTER LINE SEC 12 TO NW COR SEC  
12.
- 1971 LEE VOL 4 PG 538 SET 1"X24" IRON PIPE MIDWAY & ON  
LINE BETWEEN THE SE & SW COR OF SEC 12. REF. SAME. 14'  
WEST OF WEST PVMT EDGE OF I-90. 2682.47 TO SW COR SEC  
12. CALLS FOR A PROPERTY COR 1405.67 FROM THE S 1/4  
COR SEC 12 AND 1276.78 FROM THE SW COR SEC 12.
- 1971 BATTERMAN #1161, #1180 FD PIPE @ S 1/4 COR SEC 12 &  
PIPE @ SW COR SEC 12. @ SW COR SEC 12 CALLS FOR I PIN  
0.45 EAST OF COR. POB @ SW COR SEC 12 THENCE N89-10-  
20E 1276.78 TO PIPE; THENCE N89-10-20E 1405.69 TO S 1/4  
COR SEC 12. @ SW COR SEC 12 THENCE N00-19-08E  
1903.47 TO PIPE; THENCE N0-23-06E 733.86 TO W 1/4 COR  
SEC 12; THENCE N00-09-21E 251.20 TO PIPE; THENCE N00-  
09-21E 714.78 TO PIPE THENCE N00-09-21E 240.58 TO PIPE;  
THENCE N00-09-21E 34.65 TO PIPE.
- 1971 SHARKEY #1161&1184 FD PIPE. 2682.47 TO SW COR  
SEC 12 & ANGLE 88-51-12 @ SW COR SEC 12 FROM W 1/4  
COR SEC 12 TO S 1/4 COR SEC 12. SEC LINE IS 3' NORTH  
OF NORTH R/W LINE OF KNUDSEN RD.  
COMMENCING @ SW COR SEC 12 THENCE N89-10-20E  
1276.78 TO A PIPE; THENCE N89-10-20E 1405.69 TO S 1/4  
COR SEC 12. 2682.47 FROM SW COR TO S 1/4 COR SEC 12.
- 1971 COMBS CSM VOL 2 PG 171 FD PIPE. COMMENCING @ N 1/4  
COR SEC 13 THENCE EAST 334.52 TO PIPE; THENCE SOUTH  
33.00 TO PIPE WHICH IS THE NW COR OF LOT; THENCE EAST  
166.27 TO PIPE IN CENTER OF NEWVILLE RD; THENCE N65-  
28W 36.27 TO PIPE ON NORTH LINE OF SEC 13
- 1973 SCHROEDER CSM VOL 3 PG 193 STATES NOTHING ABOUT  
MON. 41.5 EAST OF PIPE. 1/4 COR IS ABOUT 30-40 EAST  
OF N/S FENCE.
- 1974 HELD CSM VOL 3 PG 193 COMMENCING AT S 1/4 COR SEC 12  
THENCE WEST 41.05 TO PIPE; 277.40 WEST TO PIPE; THENCE  
N00-52E 1189.14 TO A PIPE; THENCE S89-51E 57.30 TO A  
PIPE; THENCE S09-39E 1206.00 TO THE POB.
- 1974 HELD #1205 FD IP @ N 1/4 COR SEC 13. POB @ NW SEC 13  
THENCE N88-46-25E 1341.09 TO SET PIPE; THENCE N88-46-  
25E 1341.09 TO N 1/4 COR SEC 13. S0-10-00E 2654.39 FROM  
NW COR SEC 13 TO W 1/4 COR SEC 13.
- 1974 KIENBAUM CSM VOL 4 PG 87 FD 1" PIPE
- 1974 RGP "WI ROCK RIVER LEISURE ESTATES" BK 27 PG 22  
STATES NOTHING ABOUT MON.
- 1976 LIGHT #1190 USED S 1/4 COR SEC 12 FOR SURVEY NEAR N 1/4  
COR SEC 12
- 1977 SCHROEDER CSM VOL 7 PG 7 STATES NOTHING ABOUT  
MON.
- 1979 HELD #1205 FD IP. 2682.18 TO NW COR SEC 13 &  
ANGLE 91-03-35 @ NW COR SEC 13 FROM N 1/4 COR SEC  
13 TO W 1/4 COR SEC 13.

Donald Barnes

8-01/07

SHEET 1 OF 4  
CORNER CODE J-23

FU552

- 1979 COMBS #1182 SET PIPE @ S 1/16<sup>TH</sup> COR OF SE 1/4 SEC 12. @ SE COR SEC 12 (CUT STONE) THENCE S88-27-20W 1336.25 TO 1/16<sup>TH</sup> COR. @ SE COR SEC 12 THENCE N00-02-30W 2641.73 TO E 1/4 COR SEC 12.
- 1979 WOODMAN CSM VOL 9 PG 21 FD PIPE
- 1979 WOODMAN CSM VOL 9 PG 53 FD PIPE 2671.98 TO NE COR SEC 13. ANGLE 89-04-16 @ NE COR SEC 13 FROM E 1/4 COR SEC 13 TO N 1/4 COR SEC 13.
- 1980 COMBS CSM VOL 10 PG 96 SET ALUM. THENCE EAST 171.75 TO PIPE ON EAST R/W LINE OF I-90; THENCE EAST 318.87 TO PIPE IN CENTER OF RD. PIPE IN CENTER OF R/W IS 38.47 EAST OF PIPE @ PROPERTY COR.
- 1987 NORTHROP #12855 USED N/S 1/4 LINE SEC 13 TO LOCATE BOUNDARY OF LOT 1 CSM 4 PG 193 & ENCROACHMENT OVER LOT.
- 1988 SCHROEDER #12662 CALLS FOR COR BUT STATES NOTHING ABOUT IT. CALLS FOR N 1/4 COR SEC 13 BUT STATES NOTHING ABOUT IT. ANGLE 91-03-35 @ NW COR SEC 13 FROM N 1/4 COR SEC 13 TO W 1/4 COR SEC 13.
- 1988 SCHROEDER #12441 CALLS FOR COR BUT STATES NOTHING ABOUT IT. 1341.24 TO N 1/16<sup>TH</sup> COR OF NW 1/4 OF SEC 13.
- 1988 SCHROEDER CSM VOL 13 PG 212 STATES NOTHING ABOUT MON 41.05 EAST OF PIPE WHICH IS ON THE WEST SIDE OF THE WEST R/W FENCE FOR I-90
- 1989 SCHROEDER @12408 STATES NOTHING ABOUT MON. ANGLE 88-29-20 FROM N 1/4 COR SEC 13 TO SE COR SEC 13 @ S 1/4 COR SEC 13
- 1989 SCHROEDER #12299 FD PIN ON NORTH LINE SEC 13 & USED FOR SURVEY ON SOUTH SIDE OF KNUDSEN RD NEAR 1/16<sup>TH</sup> COR. CALLS FOR PIN AS N 1/16<sup>TH</sup> OF NW 1/4 OF SEC 13. PIN IS ABOUT 1340.4 EAST OF NW COR SEC 13
- 1992 COMBS CSM VOL 18 PG 155 ALUM. 2671.98 TO CUT STONE @ NE COR SEC 13.
- 2000 NORTHROP #7563 FD 1" PIPE 2682.47 TO SW COR SEC 12
- 2005 COMBS CSM VOL 29 PG 182 FD ALUM. 2672.08 TO FD CUT STONE @ NE COR SEC 13 & NB9-59-25E 1156.97' TO FD CUT STONE

FD ALUM MON WITH TOP BROKE OFF THAT COMBS PLACED IN 1980 COMBS PER CSM VOL 10 PG 96. FD 1" PIPE 0.8' DEEP & REFERENCE TIES THAT LEE PLACED. THE ORIGINAL WITNESS TREE - BUR O. 10" S60W 34.98' MAY BE THE ONE THAT IS ON THE SOUTH EDGE OF THE FOUND PIPE WHICH IS S89-45-09W 41.1' OF BATTERMAN'S PIPE.

C) Was the corner restored through acceptance of (1) an obliterated evidence location, or, (2) a found perpetuated location?

AT THIS TIME I DID NOT ACCEPT NOR REJECT EITHER MONUMENT.

D) Describe any material discrepancy between the location of the corner as restored or reestablished and the location of that corner as previously restored or reestablished by distance and direction. Show the discrepancy on the plan view drawing under (a), above. Show the distances between the corner as previously restored or reestablished and (1) the corner as restored or reestablished, and (2) to at least 4 of the witness monuments shown on the drawing in (a), above.

FD A DISCREPANCY WITH THE MONUMENTS. THE ALUM. MONUMENT THAT COMBS PLACED IS IN HARMONY WITH LEE'S INTENT TO PLACE IT MIDWAY AND ON LINE WITH THE SW AND SE CORNERS OF SEC 12. LEE'S PIPE IS IN HARMONY WITH HIS 3 REFERENCE PIPES, THE FD PIPE THAT IS S89-07-10W 1405.65', THE DISTANCE/BEARING TO THE

*Donald Funes*

81-01/07

SHEET 2 OF 4  
CORNER CODE J-23

FU552

SW COR OF SEC 12, AND THE 1971 RECORD DISTANCE OF 41.05' TO THE FD PROPERTY PIPE @ THE R/W LINE. ASSUMING THE SE COR (CUT LIMESTONE) IS IN THE SAME POSITION AS IN 1971 THEN IT APPEARS LEE MAY NOT HAVE PLACED THE PIPE AS HE INTENDED DUE TO A BLUNDER IN FIELD MEASUREMENTS AND OR CALCULATIONS.

MY 1983 MILTON REMONUMENTATION PROJECT BEARING AND DISTANCE FROM THE SW COR SEC 7 TO THE S ¼ COR SEC 7 IS 17.78' LONGER THAN RUGER'S REMON DISTANCE WHEREAS IN THAT VICINATY MY MEASUREMENTS ARE LONGER THAN HIS BY 2.0', 3.66' AND 4.56. THIS LARGE DISCREPANCY OF 17.78' MAY INDICATE THE CUT LIMESTONE THAT I FOUND AND LEE FOUND AT THE SE COR OF SEC 12 MAY HAVE NOT BE IN DIFFERENT LOCATIONS. IN WHICH CASE HIS CALLS WOULD BETTER LOCATE THE SE CORNER OF SEC 12 AND BE MORE IN HARMONY WITH RUGER'S MILTON TWP REMONUMENTATION DISTANCE.

THE BATTERMAN COMPANY HAS BEEN CONTACTED ABOUT LOCATING ANY FIELD NOTES OR CALCULATIONS THAT CAN RESOLVE THIS ISSUE.

*(E) Was the corner reestablished through lost corner proportionate methods? If so, show the method, including the directions and distances to other public land survey corners used as evidence or used for proportioning the corner location.*

YES

I, **Donald Barnes**, hereby certify that the corner location as identified by the corner code index was determined by me under my direction and control and that this U.S. Public Land Survey Monument Record is correct and complete to the best of my knowledge and belief.

Seal

*Donald Barnes*  
Embloss

8-01-07

SHEET 3 OF 4

CORNER CODE J-23

A.E. 7.08 REQUIREMENT

*Donald Barnes*  
 8-1-07

EMbossed SEAL

1971 SHARKEY 88-51-12  
 FD PIPE 88-49-46  
 FD ALUM 88-49-46  
 1971 S89-10-20V 1276.78  
 FD PIPE N89-06-43E 1276.71  
 REC S89-10-20V 1276.78  
 N89-06-47E 5354.80  
 FD ALUM N89-06-43E 2677.32  
 FD PIPE N89-06-57E 2682.36  
 2000 NORTROP 2682.47  
 1974 HELD 2682.18  
 1971 LEE 2682.47  
 1836 BURNHAM 2656.50  
 REC N89-10-20E 1405.69  
 REC N89-07-10E 1405.65  
 FD PIPE N89-06-43E 1400.61  
 ALUM N89-06-43E 1400.61

LOCATION OF PIPE  
 RESPECT TO SEC  
 LINE  
 PIPE N89 013 NORTH  
 PIPE N89 013 NORTH

1974 HELD CSM3-193 227.40  
 N89-06-22E 277.84  
 1971 CSM 2-212 227.40

E. KNUDSEN RD

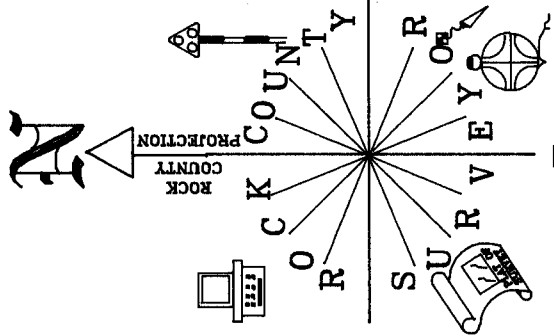
S 1/4 COR  
 SEC 12  
 FULTON TWP  
 T4N R12E

SHEET 4 OF 4

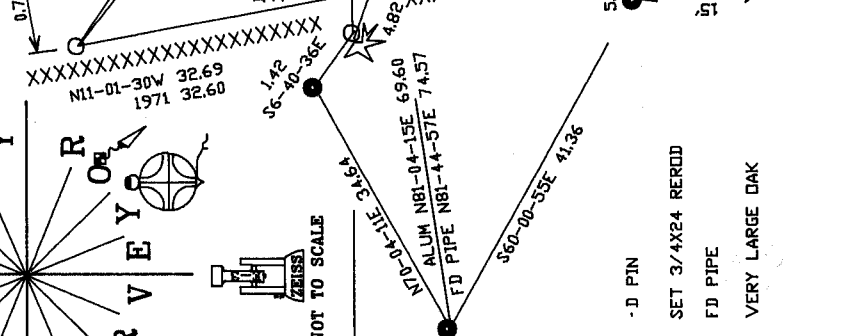
J-23

OBSERVATION SHEETS 552 & 2016

FD PIPE IS 0.13' SOUTH OF LINE SW-SE CORNERS  
 FD ALUM IS 0.05' NORTH OF LINE SW-SE CORNERS



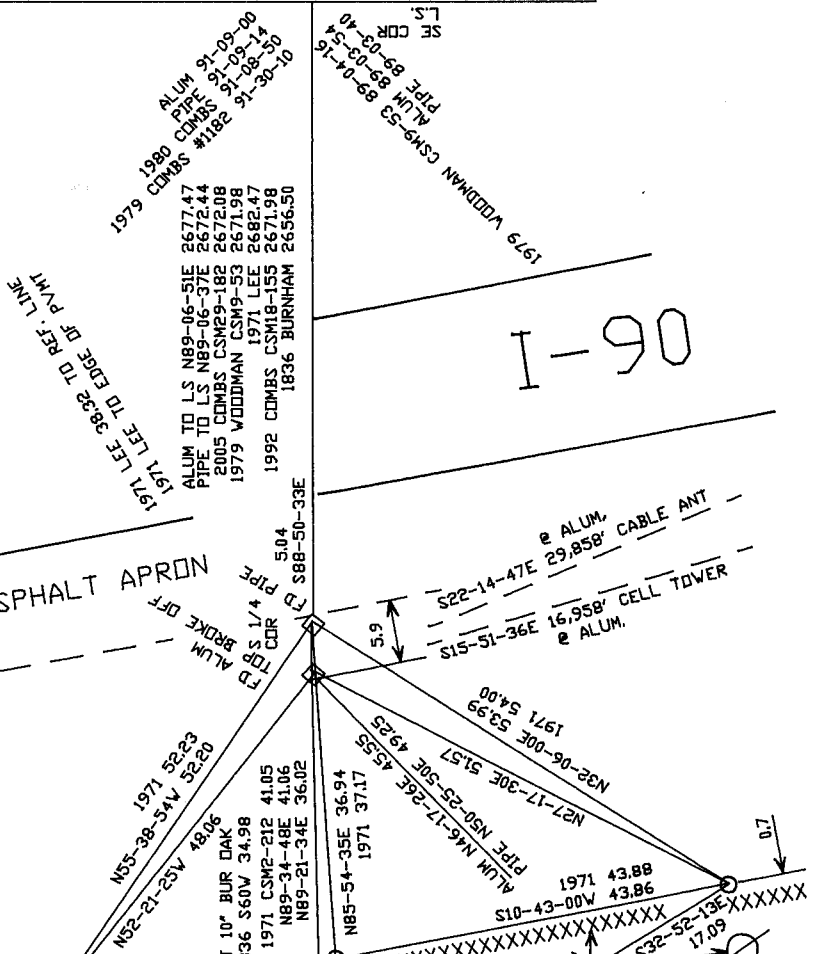
NOT TO SCALE



- ⊙ - D PIN
- SET 3/4X24 REERID
- FD PIPE
- ★ VERY LARGE DAK

ASPHALT APRON

I-90



1971 LEE 38.32 TO REF. LINE  
 ALUM TO LS N89-06-51E 2677.47  
 PIPE TO LS N89-06-37E 2672.44  
 2005 COMBS CSM29-182 2672.08  
 1979 WOODMAN CSM9-53 2671.98  
 1971 LEE 2682.47  
 1971 LEE 2682.47  
 1836 BURNHAM 2656.50  
 1979 COMBS #1182 91-30-10  
 ALUM 91-09-00  
 PIPE 91-09-00  
 1980 COMBS #1182 91-30-10  
 1979 WOODMAN CSM9-53 2671.98  
 ALUM 89-03-54  
 PIPE 89-03-40  
 SE CDR

5.04  
 S88-50-33E  
 5.9  
 S22-14-47E e ALUM. 29.858' CABLE ANT  
 S15-15-15-36E 16.958' CELL TOWER  
 e ALUM.

N32-06-00E 53.99  
 1971 54.00  
 N27-17-30E 51.57  
 ALUM N6-17-26E 43.55  
 PIPE N50-25-50E 49.25

N7-10-10W 43.88  
 N89-34-48E 41.06  
 N89-21-34E 36.02  
 N89-54-35E 36.94  
 1971 37.17  
 ALUM N6-17-26E 43.55  
 PIPE N50-25-50E 49.25

1971 43.88  
 N10-43-00W 43.86  
 N32-21-23W 42.06  
 1971 43.88  
 N89-34-48E 41.06  
 N89-21-34E 36.02  
 N89-54-35E 36.94  
 1971 37.17  
 ALUM N6-17-26E 43.55  
 PIPE N50-25-50E 49.25

N7-10-10W 43.88  
 N89-34-48E 41.06  
 N89-21-34E 36.02  
 N89-54-35E 36.94  
 1971 37.17  
 ALUM N6-17-26E 43.55  
 PIPE N50-25-50E 49.25

N7-10-10W 43.88  
 N89-34-48E 41.06  
 N89-21-34E 36.02  
 N89-54-35E 36.94  
 1971 37.17  
 ALUM N6-17-26E 43.55  
 PIPE N50-25-50E 49.25

N7-10-10W 43.88  
 N89-34-48E 41.06  
 N89-21-34E 36.02  
 N89-54-35E 36.94  
 1971 37.17  
 ALUM N6-17-26E 43.55  
 PIPE N50-25-50E 49.25

N7-10-10W 43.88  
 N89-34-48E 41.06  
 N89-21-34E 36.02  
 N89-54-35E 36.94  
 1971 37.17  
 ALUM N6-17-26E 43.55  
 PIPE N50-25-50E 49.25

N7-10-10W 43.88  
 N89-34-48E 41.06  
 N89-21-34E 36.02  
 N89-54-35E 36.94  
 1971 37.17  
 ALUM N6-17-26E 43.55  
 PIPE N50-25-50E 49.25

N7-10-10W 43.88  
 N89-34-48E 41.06  
 N89-21-34E 36.02  
 N89-54-35E 36.94  
 1971 37.17  
 ALUM N6-17-26E 43.55  
 PIPE N50-25-50E 49.25

N7-10-10W 43.88  
 N89-34-48E 41.06  
 N89-21-34E 36.02  
 N89-54-35E 36.94  
 1971 37.17  
 ALUM N6-17-26E 43.55  
 PIPE N50-25-50E 49.25

N7-10-10W 43.88  
 N89-34-48E 41.06  
 N89-21-34E 36.02  
 N89-54-35E 36.94  
 1971 37.17  
 ALUM N6-17-26E 43.55  
 PIPE N50-25-50E 49.25

N7-10-10W 43.88  
 N89-34-48E 41.06  
 N89-21-34E 36.02  
 N89-54-35E 36.94  
 1971 37.17  
 ALUM N6-17-26E 43.55  
 PIPE N50-25-50E 49.25