

# U.S. PUBLIC LAND SURVEY MONUMENT RECORD

For Public Land Survey Corners in: WI ADMINISTRATIVE CODE A-E 7.08 REQUIREMENT  
T.04 N., R. 11 E 4th P.M.

### CORNER CODE INDEX

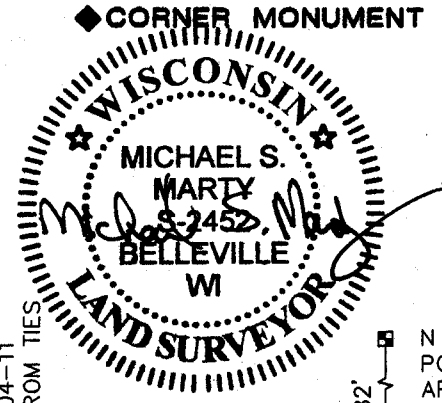
	2	3	4	5	6	7	8	9	10	11	12	13	14	15	16	17	18	19	20	21	22	23	24	25
A	6	5	4	3	2	1																		
B																								
C	1	8	9	10	11	12																		
D																								
E	18	17	16	15	14	13																		
F																								
G	19	20	21	22	23	24																		
H																								
I	30	29	28	27	26	25																		
J																								
K	31	32	33	34	35	36																		
L																								
M																								
N																								
O																								
P																								
Q																								
R																								
S																								
T																								
U																								
V																								
W																								
X																								
Y																								
Z																								

Porter TWP  
ROCK COUNTY, WI  
IF AVAILABLE  
ROCK COUNTY COORDINATES PREFERRED

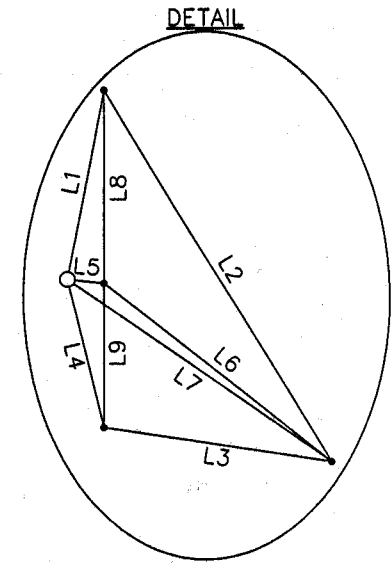
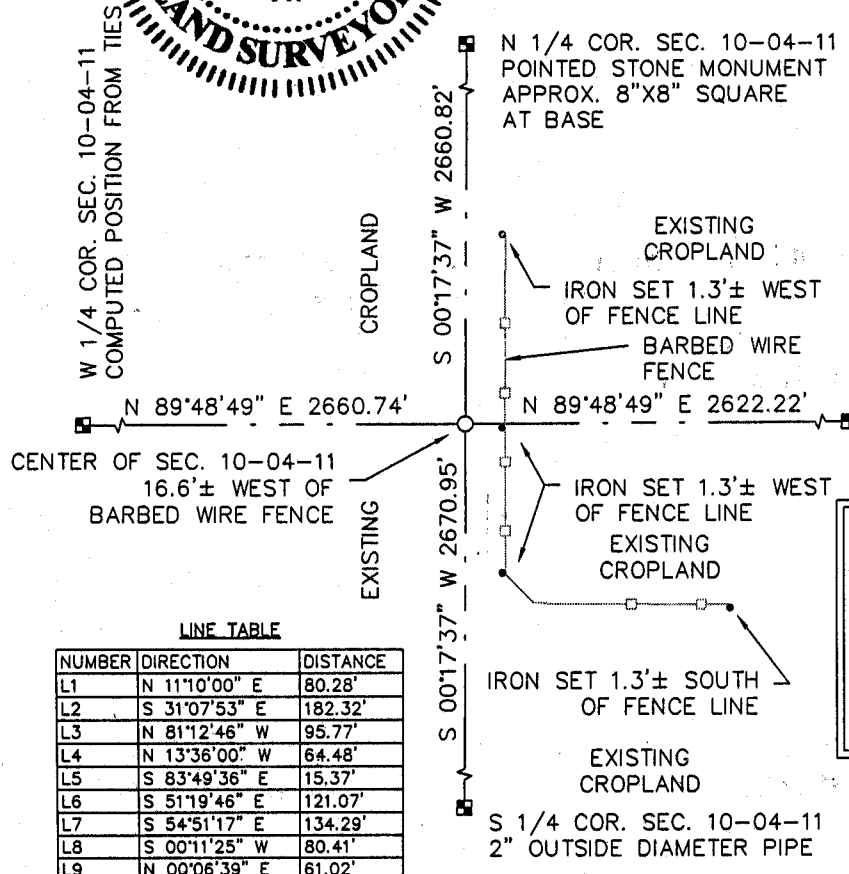
North \_\_\_\_\_ Elev. \_\_\_\_\_  
 East \_\_\_\_\_  
 Hor. Datum \_\_\_\_\_ Vert. Datum \_\_\_\_\_  
 LATITUDE \_\_\_\_\_ ELLIPS. HT. \_\_\_\_\_  
 LONGITUDE \_\_\_\_\_  
 ELLIPS. DATUM \_\_\_\_\_  
 NAD83(91) \_\_\_\_\_ COUNTY \_\_\_\_\_ LIST \_\_\_\_\_  
 GPS (X) \_\_\_\_\_ TRAVERSE (X) \_\_\_\_\_  
 BASED ON THE FOLLOWING CONTROL:

PLACE MONUMENT SYMBOL  $\blacklozenge$  AT PROPER LOCATION ON ABOVE INDEX

(a)



BEARINGS ARE BASED ON: ASSUMED



LINE TABLE

NUMBER	DIRECTION	DISTANCE
L1	N 11°10'00" E	80.28'
L2	S 31°07'53" E	182.32'
L3	N 81°12'46" W	95.77'
L4	N 13°36'00" W	64.48'
L5	S 83°49'36" E	15.37'
L6	S 51°19'46" E	121.07'
L7	S 54°51'17" E	134.29'
L8	S 00°11'25" W	80.41'
L9	N 00°06'39" E	61.02'

LEGEND

- $\circ$  1-1/4" X 30" SOLID IRON RE-ROD SET, WT. 4.30 lbs./ft.
- $\bullet$  3/4" X 24" SOLID IRON RE-ROD SET
- $\blacksquare$  SECTION CORNER (TYPE NOTED)

NOTES:  
 1. Sketch and detail not to scale.  
 2. See Detail for line table information.

FIELD BOOK \_\_\_\_\_ PAGE # \_\_\_\_\_ SHEET 1 OF 1

SHOW A PLAN VIEW DRAWING DEPICTING THE CORNER MONUMENT AND SURROUNDING PHYSICAL FEATURES, INCLUDING THE EXCAVATION AREA AND DEPTH.

PLANNING & ZONING COMMITTEE ADOPTED THE ABOVE FORM ON 12/2/1982

CORNER CODE G-15

B) Describe any record evidence, monument evidence, occupational evidence, testimonial evidence or any other material evidence you considered, and whether the monument was found or placed.

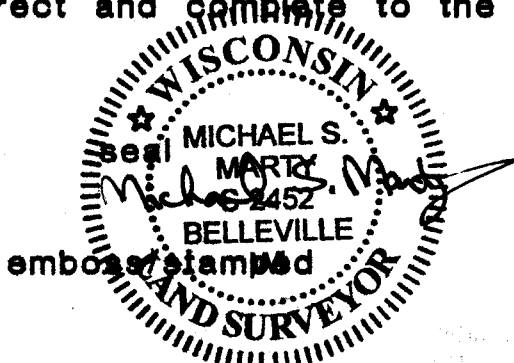
I tied into the North, South, West and East Quarter corner of Section 10 as referenced herein, and placed a monument at the intersection of the North - South, East - West Quarter lines.

C) Was the corner restored through acceptance of (1) an obliterated evidence location, or, (2) a found perpetuated location?

D) Describe any material discrepancy between the location of the Corner as restored or reestablished and the location of that corner as previously restored or reestablished by distance and direction. Show the discrepancy on the plan view drawing under (a), above. Show the distances between the corner as previously restored or reestablished and (1) the corner as restored or reestablished, and (2) to at least 4 of the witness monuments shown on the drawing in (a), above.

E) Was the corner reestablished through lost corner proportionate methods? If so, show the method, including the directions and distances to other public land survey corners used as evidence or used for proportioning the corner location.

I, Michael S. Marty, hereby certify that the corner location as identified by the corner code index was determined by me under by direction and control and that this U.S. Public Land Survey Monument Record is correct and complete to the best of my knowledge and belief.



Number of included sheets \_\_\_\_\_

A-E 7.08 REQUIREMENT CORNER CODE G-15