

Paper weight-110# (minimum)

Black nonfading ink required

U.S. PUBLIC LAND SURVEY MONUMENT RECORD

For Public Land Survey Corners In:

WI ADMINISTRATIVE CODE A-E 7.08 REQUIREMENT

T. 4N. R. 11E. 4th P.M.

REV 10/23/2004

USMONREC.DWG

CORNER CODE INDEX

PORTER TWP

ROCK COUNTY WI

IF AVAILABLE

ROCK COUNTY COORDINATES PREFERRED

	1	2	3	4	5	6	7	8	9	10	11	12	13	14	15	16	17	18	19	20	21	22	23	24	25		
A																											A
B																											B
C																											C
D																											D
E																											E
F																											F
G																											G
H																											H
J																											J
K																											K
L																											L
M																											M
N																											N
O																											O
P																											P
Q																											Q
R																											R
S																											S
T																											T
U																											U
V																											V
W																											W
X																											X
Y																											Y
Z																											Z
	1	2	3	4	5	6	7	8	9	10	11	12	13	14	15	16	17	18	19	20	21	22	23	24	25		

North _____ Elev. _____

East _____

Hor. Datum _____ Vert. Datum _____

LATITUDE _____ ELLIPS. HT. _____

LONGITUDE _____

NAD83(91) _____ NETWORK ADJ. YR _____

GPS (X) _____ TRAVERSE (X) _____

BASED ON THE FOLLOWING CONTROL:

PLACE MONUMENT SYMBOL AT PROPER LOCATION ON ABOVE INDEX

CORNER MONUMENT

WITNESS MONUMENT

BEARINGS ARE BASED ON: _____

FIELD BOOK _____ PAGE # _____

SHEET 1 OF 3

SHOW A PLAN VIEW DRAWING DEPICTING THE CORNER MONUMENT AND SURROUNDING PHYSICAL FEATURES, INCLUDING THE EXCAVATION AREA AND DEPTH.

PLANNING & ZONING COMMITTEE ADOPTED THIS FORM ON 12/2/1982

CORNER CODE R-5

PO583

NECORSEC30

(B) Describe any record evidence, monument evidence, occupational evidence, testimonial evidence or any other material evidence you considered, and whether the monument was found or placed.

1833 HARRISON (NOV 3RD) T4N R11E 4TH MER. NORTH
BET. 29 & 30

1935.12 RED OAK 24 IN DIAM.
2640.0 QUARTER SEC COR.
BURR OAK 12 N11E 16.5'
BURR OAK 10 S60E 21.12'
{BURR OAK 12; BURR OAK 10} MARKED
3911.82 BURR OAK 18 IN DIAM.
5280.0 SET COR TO SECS 19,20,29,30
{WHITE OAK 10 S75W 17.82'; WHITE OAK
24 S41E 67.32'; BURR OAK 10 N75E
43.56'; BURR OAK 15 N52W 112.20'
LAND ROLLING 2ND RATE TIMBER MOSTLY
RED, BURR OAK. ????????

1833 HARRISON (NOV 3RD) T4N R11E 4TH MER. EAST ON RAND.
BET. 20 & 19

2640.0 TEMPY 1/4 SEC COR
5299.80 INT. E BDY 39.60' NORTH OF POST
LAND & SAME
WEST COR. WEST BET SECS 20 & 29
2649.90 QUARTER SEC COR. {BURR OAK 14 S81W
54.12'; BURR OAK 18 N20E 33.00'
BURR OAK 14; BURR OAK 18} MARKED
5299.80 SEC COR

1833 (NOV) HARRISON T4N R11E 4TH MER. WEST BET SECS 19
& 30

2640.0 QUARTER SEC COR. {BURR O 12 S3W 35.64';
BURR OAK 18 NORTH 73.26' {BURR O 12; BURR
O 18} MARKED
5181.00 INT. W. BDYT 39.60' NORTH OF POST {BURR
OAK 10 S82E 52.8'; BURR O 18 N62E 81.18'
{BURR OAK 10; BURR OAK 18} MARKED
LAND @ ? SAME.

1833 HARRISON (NOV) T4N R11E 4TH MER. NORTH
BET. 19 & 20

1307.46 BURR OAK 12 IN DIAM
2640.0 QUARTER SEC COR {BURR OAK 12 N5W 24.42';
BURR OAK 12; BURR OAK 10} MARKED
4418.04 BURR OAK 12 IN DIAM
5280.0 COR TO SECS 17,18,19,20 {BURR OAK 12 S34E
27.72'; BURR OAK 18 N30W 60.72'; BURR OAK
18 S62W 116.82'; BURR OAK 18 N22E 60.72'
LAND ROLLING 2ND RATE L?? MOSTLY RED &
BURR OAK ?? GRASS & WEEDS

1871 RUGER VOL 2 PG 68 FD OLD STAKE & ALSO SW & SE BTS
STUMPS OF NW & NE BTS DROVE STAKE SURROUNDED IT
WITH 4 HH TONES & PUT FLAT HH STONE ON TOP OF IT. VAR
6-47 2654.52 TO N 1/4 COR SEC 29

1874 RUGER VOL 2 PG 179 FD COR EST BY SELF SEE PAGE 41,
2658.48 TO E 1/4 COR SEC 30.

1899 BROWN VOL 2 PG 510 FD POST SURROUNDED BY 3 HH.
2673.99 TO E 1/4 COR SEC 19

1977 BARNES VOL 5 PG 264 & 275 DUG & FD NOTHING.
OCCUPATION AGREED WITH RECORD DISTANCE TO THE
NORTH AND THE EAST. SET ALUM. MON & REFERENCED
SAME. ON SE CORNER OF FENCE POST @ FENCE INT.
2674.X. TO W 1/4 COR SEC 20 2657.X TO S 1/4 COR SEC 20

SHEET 1 OF 3
CORNER CODE R-5

Donald Barnes
6-10-2009

PO583 NECORSEC30

2000 NORTHROP GSM VOL 24 PG 79 STATES NOTHING ABOUT
MON S00-04-22E 2663.25 TO W 1/4 COR SEC 29

2003 COMBS GSM VOL 26 PG 209 ALUM. S89-43-56W 2656.72
TO CI @ S 1/4 COR SEC 20

FD ALUM. MON & TIES AS CALLED FOR IN VOL 5 PG 275

C) Was the corner restored through acceptance of (1) an obliterated evidence location, or, (2) a found perpetuated location?

**ACCEPTED ALUM. MON. THICK HEAVY WOODS ON THE NW SIDE.
FARM FIELDS TO THE SW, SE, & NE OF CORNER. THE DISTANCES TO
THE SOUTH, NORTH, & EAST ARE IN HARMONY WITH THE LATE 1800
RECORD DISTANCES.**

D) Describe any material discrepancy between the location of the corner as restored or reestablished and the location of that corner as previously restored or reestablished by distance and direction. Show the discrepancy on the plan view drawing under (a), above. Show the distances between the corner as previously restored or reestablished and (1) the corner as restored or reestablished, and (2) to at least 4 of the witness monuments shown on the drawing in (a), above.

NONE

(E) Was the corner reestablished through lost corner proportionate methods? If so, show the method, including the directions and distances to other public land survey corners used as evidence or used for proportioning the corner location.

NO

I, **Donald Barnes**, hereby certify that the corner location as identified by the corner code index was determined by me under my direction and control and that this U.S. Public Land Survey Monument Record is correct and complete to the best of my knowledge and belief.

Seal

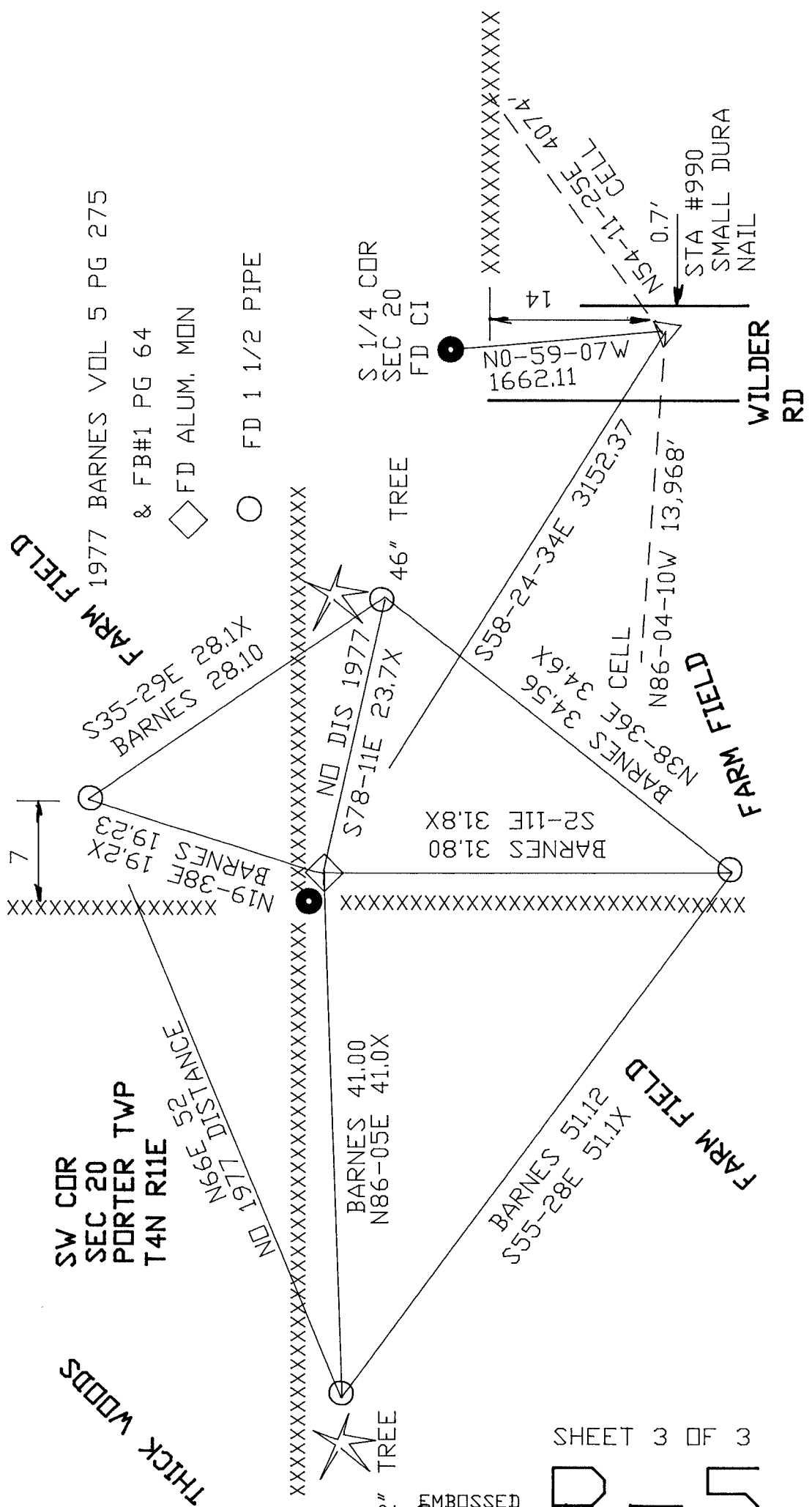
SHEET 2 OF 3

Emboss

CORNER CODE **R-5**

A.E. 7.08 REQUIREMENT

Donald Barnes
6-10-2009



SHEET 3 OF 3

EMBOSSED SEAL
Grad Barnes
 06-10-09

R-5