

Paper weight-110# (minimum)

Black nonfading ink required

U.S. PUBLIC LAND SURVEY MONUMENT RECORD

For Public Land Survey Corners In:

T. 4 N. R. 11 E. 4th P.M.

WI ADMINISTRATIVE CODE A-E 7.08 REQUIREMENT

REV 10/23/2004 USMONREC.DWG

CORNER CODE INDEX

	1	2	3	4	5	6	7	8	9	10	11	12	13	14	15	16	17	18	19	20	21	22	23	24	25
A																									
B																									
C																									
D																									
E																									
F																									
G																									
H																									
J																									
K																									
L																									
M																									
N																									
O																									
P																									
Q																									
R																									
S																									
T																									
U																									
V																									
W																									
X																									
Y																									
Z																									

PORTER TWP

ROCK COUNTY WI

IF AVAILABLE
ROCK COUNTY COORDINATES PREFERRED

North _____ Elev. _____

East _____

Hor. Datum _____ Vert. Datum _____

LATITUDE _____ ELLIPS. HT. _____

LONGITUDE _____

NAD83(91) _____ NETWORK ADJ. YR _____

GPS (X) _____ TRAVERSE (X) _____

BASED ON THE FOLLOWING CONTROL:

PLACE MONUMENT SYMBOL AT PROPER LOCATION ON ABOVE INDEX

CORNER MONUMENT

WITNESS MONUMENT

BEARINGS ARE BASED ON: _____

FIELD BOOK _____ PAGE # _____

SHEET 1 OF 2

SHOW A PLAN VIEW DRAWING DEPICTING THE CORNER MONUMENT AND SURROUNDING PHYSICAL FEATURES, INCLUDING THE EXCAVATION AREA AND DEPTH.

PLANNING & ZONING COMMITTEE ADOPTED THIS FORM ON 12/2/1982

CORNER CODE N-15

PO568

N1/4CORSEC22

(B) Describe any record evidence, monument evidence, occupational evidence, testimonial evidence or any other material evidence you considered, and whether the monument was found or placed.

1833 HARRISON (NOV 2ND) T4N R11E 4TH MER. EAST ON RAND.
BET. 15 & 22

2640.0 TEMPY 1/4 SEC COR
4521.0 BROOK 5.28' CRS NORTH
5330.16 INT E BDY 26.40' NORTH OF POST LAND
GENTLY ROLLING PRAIRIE DESCENDING E
TO BROOK GROWTH GRASS & WEEDS
WEST COR. WEST
2665.08 QUARTER SEC COR {POST & RAISED
MOUND OF EARTH & SOD
5330.16 SEC COR

1878 RUGER VOL 2 PG 241 FD 2 HH STONES, ONE ON TOP OF
THE OTHER & REMAINS OF OLD STAKE UNDER THEM. SET
HH STONE 22X10X8 SURROUNDED IT BY 4 HH STONES.
USED TO SUBDIVIDE SEC 22

1965 BATTERMAN VOL 4 PG 236 FD STONE OF RECORD AT NORTH
END OF N/S FENCE & EAST END OF E/W FENCE

1975 COMBS CSM VOL 4 PG 345 & CSM VOL 5 PG 343 FD STONE
SO-50W TO FD STONE @ CENTER OF SEC 22.

1976 COMBS CSM VOL 5 PG 343 SO-50W TO FD STONE @
CENTER OF SEC 22.

1998 COMBS #8358 FD ALUM. MON 5310.04 TO ALUM @ S 1/4
COR SEC 22

2000 COMBS #7655 ALUM MON. S1-19-50W TO SET PIN @
CENTER OF SEC 22; S1-19-50W

2001 LATHROP CSM VOL 24 PG 312 ALUM. 2656.99 TO FD
STONE @ CENTER OF SEC 22. THERE IS A FD IP SOUTH
23.5X OF STONE

FD POLY MON. WITH TOP BROKE OFF. SET CARSONITE ON NE SIDE.

C) Was the corner restored through acceptance of (1) an obliterated evidence location, or, (2) a found perpetuated location?

ACCEPTED FD POLY. I DID NOT FIND MY RECORD OF REPLACING THE
REC STONE WITH THIS POLY. SINCE IT IS A POLY, IT PROBABLY IS
ONE THAT I PLACED AND I PROBABLY REPLACED THE REC. STONE.

D) Describe any material discrepancy between the location of the corner as restored or reestablished and the location of that corner as previously restored or reestablished by distance and direction. Show the discrepancy on the plan view drawing under (a), above. Show the distances between the corner as previously restored or reestablished and (1) the corner as restored or reestablished, and (2) to at least 4 of the witness monuments shown on the drawing in (a), above.

NONE

(E) Was the corner reestablished through lost corner proportionate methods? If so, show the method, including the directions and distances to other public land survey corners used as evidence or used for proportioning the corner location.

I, **Donald Barnes**, hereby certify that the corner location as identified by the corner code index was determined by me under my direction and control and that this U.S. Public Land Survey Monument Record is correct and complete to the best of my knowledge and belief.

Seal

6-9-09

Encl

Donald Barnes

SHEET 1 OF 2

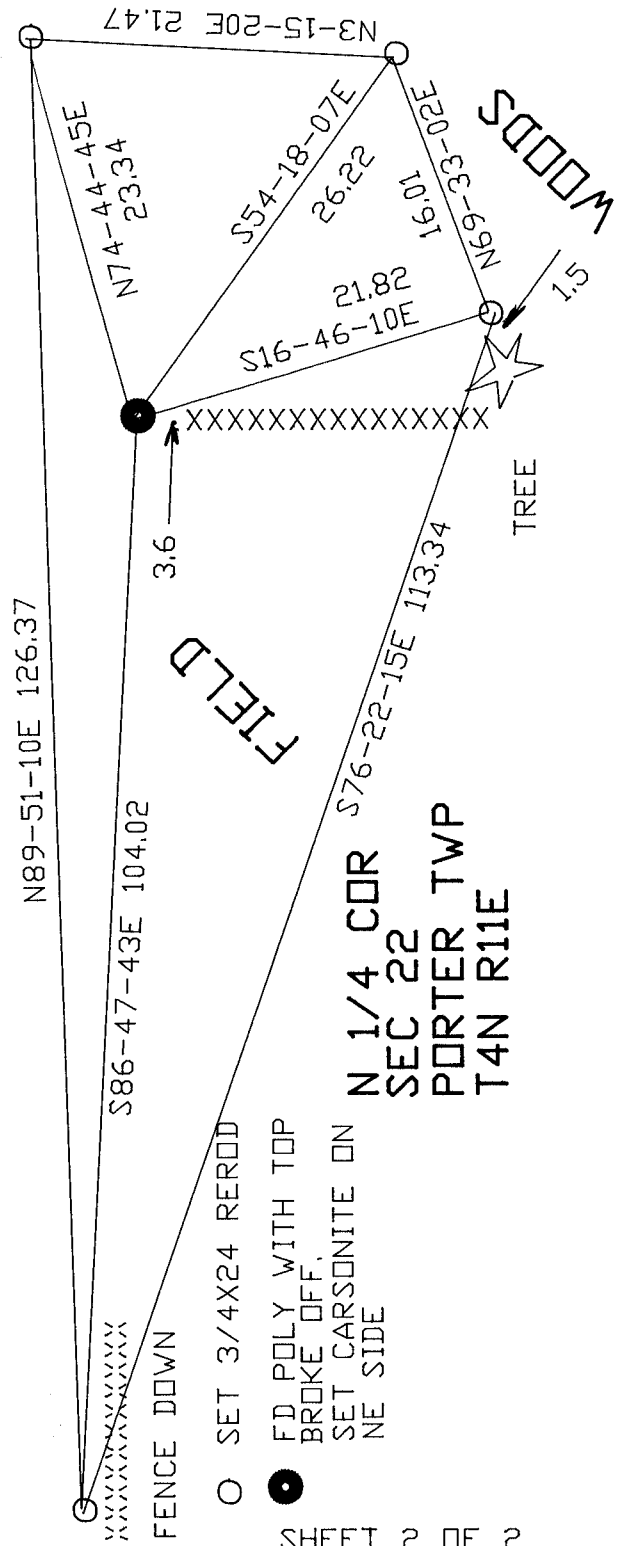
CORNER CODE **N-15**

A.E. 7.08 REQUIREMENT

EMBOSSSED SEAL
Donald Barnes
6-09-09

SHEET 2 OF 2
N-15

WET - LOW LAND



N 1/4 COR
SEC 22
PORTER TWP
T4N R11E

O SET 3/4X24 REROD
● FD POLY WITH TOP BROKE OFF, SET CARSONITE ON NE SIDE

