

# U.S. PUBLIC LAND SURVEY MONUMENT RECORD

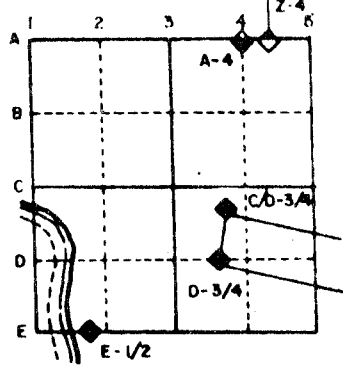
For Public Land Survey Corners in the  
T. 4 N., R. 11 E.

## CORNER CODE INDEX

	1	2	3	4	5	6	7	8	9	10	11	12	13	14	15	16	17	18	19	20	21	22	23	24	25
A																									
B																									
C	6																								
D																									
E																									
F																									
G	7																								
H																									
I																									
J																									
K																									
L	18																								
M																									
N																									
O																									
P	19																								
Q																									
R																									
S																									
T	30																								
U																									
V																									
W																									
X																									
Y	31																								
Z																									

PLACE MONUMENT SYMBOL (◆) AT PROPER LOCATION ON ABOVE INDEX

### EXAMPLE



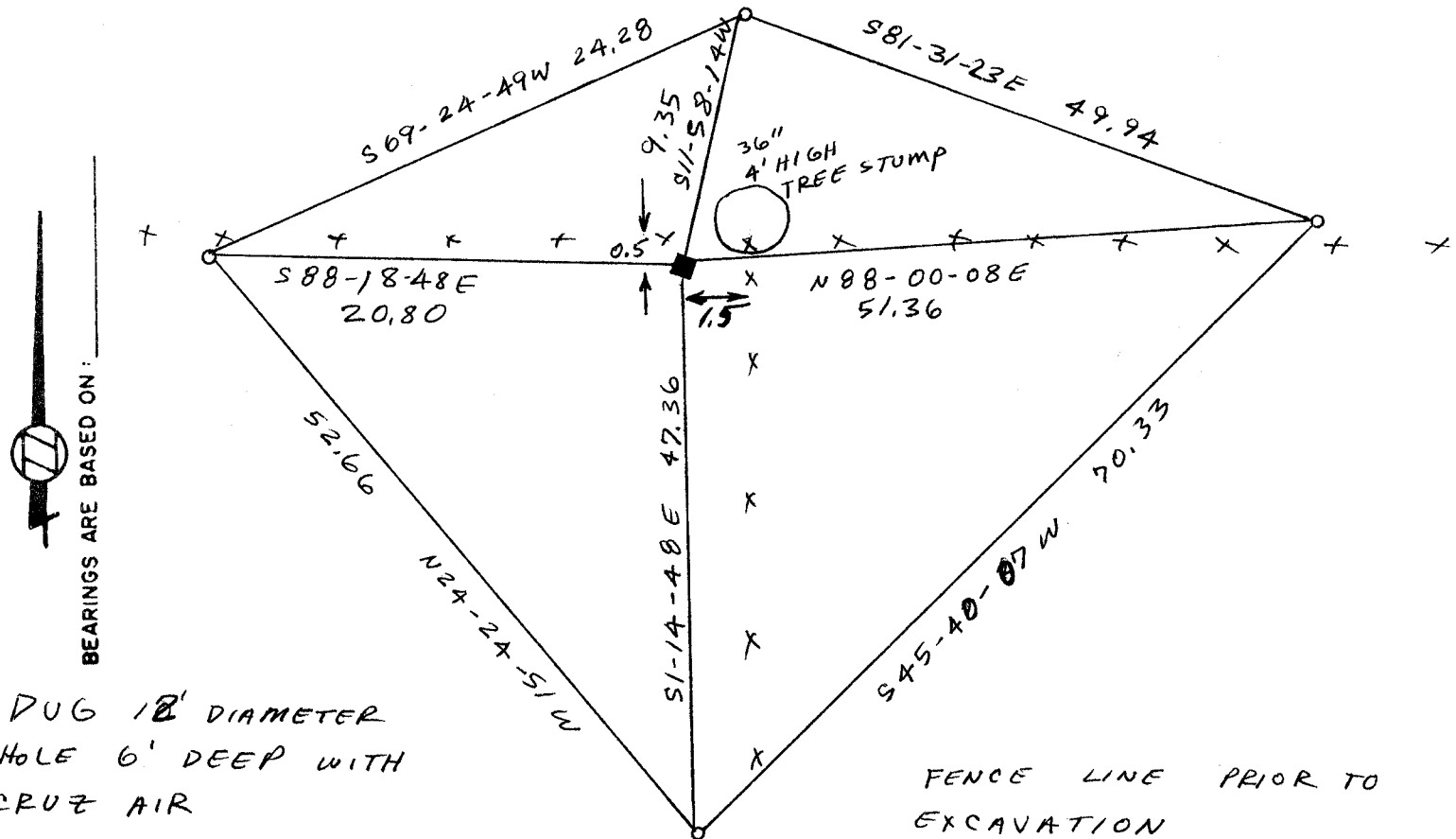
PORTER TWP  
ROCK COUNTY WI

IF AVAILABLE  
STATE PLANE COORDINATES

North (Y) \_\_\_\_\_ Eleve. (Z) \_\_\_\_\_  
 East (X) \_\_\_\_\_ Zone \_\_\_\_\_  
 Hor. Datum \_\_\_\_\_ Vert. Datum \_\_\_\_\_

- (a.) ◆ CORNER MONUMENT  
 POLY MONUMENT WITH WHITE PLASTIC POST ON EAST SIDE

○ WITNESS MONUMENT  $\frac{1}{2}$ " X 24" RE ROD



DUG 18' DIAMETER  
HOLE 6' DEEP WITH  
CRUZ AIR

FIELD BOOK 2 PAGE # 55, 59

12" TREE

FENCE LINE PRIOR TO  
EXCAVATION

MICROFILMED

SHOW A PLAN VIEW DRAWING DEPICTING THE CORNER MONUMENT AND SURROUNDING PHYSICAL FEATURES, INCLUDING THE EXCAVATION AREA AND DEPTH. THE CORNER MONUMENT SHALL HAVE THE FOLLOWING CHARACTERISTICS: 1) HAVE AT LEAST TWO PREDETERMINED BREAK-OFF POINTS. 2) IF BROKEN, LEAVE A PERMANENTLY MAGNETIZED REMNANT AT THE ORIGINAL POINT. 3) MUST BE EXTENDABLE. 4) THE CAP IS INSCRIBED ROCK COUNTY SURVEY MONUMENT - PENALTY FOR DISTURBING MARKER. 5) OR AN EXISTING CUT LIMESTONE. AN IRON PIPE  $1\frac{1}{2}$ " X 4'0" (MINIMUM) MAY BE USED IN AREAS WHERE GROUND WATER IS WITHIN ONE FOOT OF THE SURFACE. IF THE CORNER IS OCCUPIED BY AN IMPROVEMENT (MANHOLE, BURIED CABLE, ETC.) ANY DURABLE, DISTINCT MONUMENT MAY BE USED. CORNERS SHALL BE REFERENCED WITH AT LEAST 4 DURABLE WITNESS MONUMENTS. WITNESS MONUMENTS SHALL BE MADE OF CONCRETE, NATURAL STONE, IRON OR OTHER EQUALLY DURABLE MATERIAL, EXCEPT WOOD. DESCRIBE THE CORNER AND THE WITNESS MONUMENTS.

CORNER CODE: J5

(b.) Describe any record evidence, monument evidence, occupational evidence, testimonial evidence or any other material evidence you considered, and whether the monument was found or placed.

1833 GEORGE HARRISON ORIGINAL NOTES. PLACED ~~POST~~ & RAISED A MOUND OF EARTH & SOD. PLACED NO B.T.s

1870 RUGER VOL 2 PG 25 FOUND HARDHEADSTONE AT CORNER, USED THIS CORNER AND THE SE CORNER SECTION 8 TO ESTABLISH THE S 1/4 CORNER OF SECTION 8 WHICH HE DECLARED LOST. SHOWS A DISTANCE OF 2685.71' TO THE S 1/4 CORNER OF SECTION 8 AND 2685.71 FROM THE S 1/4 CORNER TO THE SE CORNER OF SECTION 8.

1892 BLEEDHORN VOL 2 PG 468 FOUND REMAINS OF OLD STAKE & CORNER SET BY RUGER. SET HH SURROUNDED IT BY 4HHS. FOUND SOUTH 1/4 CORNER OF SECTION 8 AS PLACED BY RUGER. PLACED HH 1308.05' EAST OF THIS CORNER. SHOWS A DISTANCE OF 2664.09 TO W 1/4 CORNER OF 8

1895 BROWN VOL 2 PG 496 STATES NOTHING ABOUT CORNER. PLACED HH 13X12X6 AT MID POINT BETWEEN THE N 1/4 CORNER OF SEC 17 AND THIS CORNER. SHOWS A DISTANCE OF 1342.66

1892 UNKNOWN FIELD BOOK 2 PG 116, 118 SHOWS DISTANCE OF 2684.88 TO S 1/4 CORNER OF SEC 8. STATES NOTHING ABOUT CORNER.

DUG 12' DIAMETER HOLE 6' DEEP WITH CRUZ AIR AND FOUND NOTHING. PLACED POLY MONUMENT AT OCCUPATION. THIS IS IN HARMONY WITH BLEEDHORN'S DISTANCE TO THE W 1/4 CORNER OF

(c.) <sup>SEE (D)</sup> Was the corner restored through acceptance of (1) an obliterated evidence location, or (2) a found perpetuated location?

ACCEPTED FOUND PERPETUATED LOCATION

(d.) Describe any material discrepancy between the location of the corner as restored or reestablished and the location of that corner as previously restored or reestablished by distance and direction. Show the discrepancy on the plan view drawing under (b), above. Show the distances between the corner as previously restored or reestablished and (1) the corner as restored or reestablished, and (2) to at least 4 of the witness monuments shown on the drawing in (b), above.

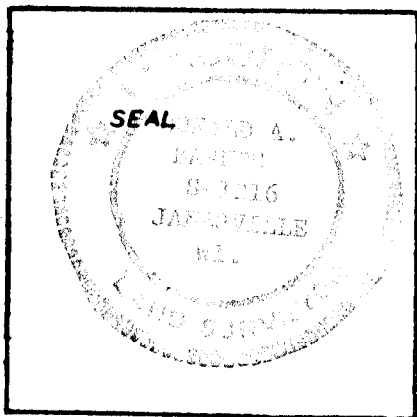
CONTINUATION OF (B)

SECTION 8 AND RECORD DISTANCES TO THE SOUTH QUARTER CORNER OF SECTION 8 AND THE OCCUPATION LINES BETWEEN THIS AND THE SOUTH 1/4 CORNER OF SECTION 8. RUGER ESTABLISHED THE S 1/4 CORNER OF SECTION 8 MIDWAY ON LINE WITH THE SW & SE CORNERS OF SECTION 8, WHICH IS IN HARMONY WITH THIS LOCATION.

(e.) Was the corner reestablished through lost corner proportionate methods? If so, show the method, including the directions and distances to other public land survey corners used as evidence or used for proportioning in determining the corner location.

NO

I, Donald Barnes, hereby certify that the corner points as identified by the corner code index were, in a field survey on JANUARY 18, 1988, established, re-established, monumented, re-monumented, recovered or restored as expressed below and in conformance with the regulations and rules as required in the current manual of survey instructions of the United States Department of Interior, Bureau of Land Management.



COUNTY SURVEYOR FILING DATA  
Date of Computer Entry \_\_\_\_\_  
Date Received \_\_\_\_\_  
Date Microfilmed \_\_\_\_\_  
Treasurer's Receipt No. \_\_\_\_\_  
Number of Included Sheets 1

AFFIX YOUR LAND SURVEYOR SEAL. CORNER CODE J5

# U.S. PUBLIC LAND SURVEY MONUMENT RECORD

For Public Land Survey Corners in the

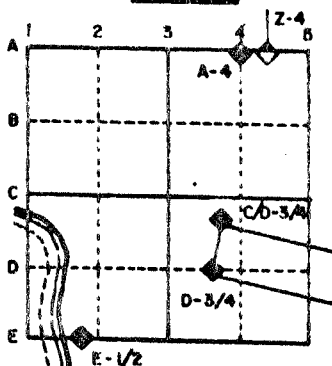
T. 4 N., R. 11 E.

## CORNER CODE INDEX

	1	2	3	4	5	6	7	8	9	10	11	12	13	14	15	16	17	18	19	20	21	22	23	24	25
A																									
B																									
C																									
D																									
E																									
F																									
G																									
H																									
I																									
J																									
K																									
L																									
M																									
N																									
O																									
P																									
Q																									
R																									
S																									
T																									
U																									
V																									
W																									
X																									
Y																									
Z																									

PLACE MONUMENT SYMBOL (◆) AT PROPER LOCATION ON ABOVE INDEX

### EXAMPLE



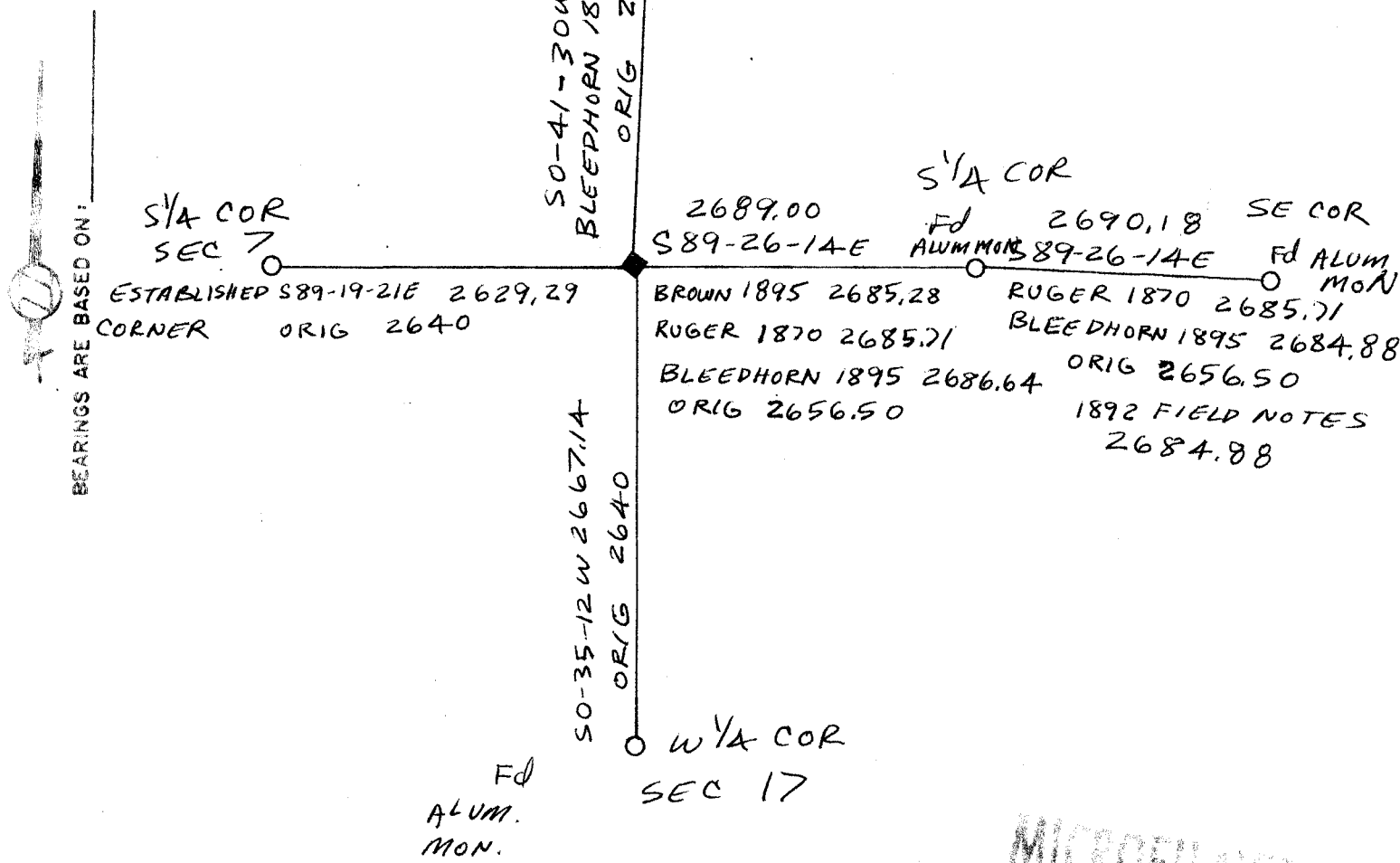
PORTER TWP  
ROCK COUNTY WI

### IF AVAILABLE STATE PLANE COORDINATES

North (Y) \_\_\_\_\_ Eleve. (Z) \_\_\_\_\_  
 East (X) \_\_\_\_\_ Zone \_\_\_\_\_  
 Hor. Datum \_\_\_\_\_ Vert. Datum \_\_\_\_\_

◆ CORNER MONUMENT

○ WITNESS MONUMENT



MICROFILMED