

Paper weight-110# (minimum)

Black nonfading ink required

U.S. PUBLIC LAND SURVEY MONUMENT RECORD

For Public Land Survey Corners In:

WI ADMINISTRATIVE CODE A-E 7.08 REQUIREMENT

T. 4 N. R. 11 E. 4th P.M.

REV 10/23/2004

USMONREC.DWG

CORNER CODE INDEX

PORTER TWP

ROCK COUNTY WI

IF AVAILABLE

ROCK COUNTY COORDINATES PREFERRED

A	1	2	3	4	5	6	7	8	9	10	11	12	13	14	15	16	17	18	19	20	21	22	23	24	25	A
B																										B
C																										C
D																										D
E																										E
F																										F
G																										G
H																										H
J																										J
K																										K
L																										L
M																										M
N																										N
O																										O
P																										P
Q																										Q
R																										R
S																										S
T																										T
U																										U
V																										V
W																										W
X																										X
Y																										Y
Z																										Z

North _____ Elev. _____

East _____

Hor. Datum _____ Vert. Datum _____

LATITUDE _____ ELLIPS. HT. _____

LONGITUDE _____

NAD83(91) _____ NETWORK ADJ. YR _____

GPS (X) _____ TRAVERSE (X) _____

BASED ON THE FOLLOWING CONTROL:

PLACE MONUMENT SYMBOL AT PROPER LOCATION ON ABOVE INDEX

CORNER MONUMENT

WITNESS MONUMENT

BEARINGS ARE BASED ON: _____

FIELD BOOK _____ PAGE # _____

SHEET 1 OF 2

SHOW A PLAN VIEW DRAWING DEPICTING THE CORNER MONUMENT AND SURROUNDING PHYSICAL FEATURES, INCLUDING THE EXCAVATION AREA AND DEPTH.

PLANNING & ZONING COMMITTEE ADOPTED THIS FORM ON 12/2/1982

CORNER CODE J-15

PO548 S1/4CORSEC10

(B) Describe any record evidence, monument evidence, occupational evidence, testimonial evidence or any other material evidence you considered, and whether the monument was found or placed.

1833 HARRISON (NOV 2ND) T4N R11E 4TH MER. EAST ON RAND.
BET. 10 & 15

2640.0 TEMPY 1/4 SEC COR.

5290.56 INT. E BDY 39.6' NORTH OF POST
LAND ROLLING 1ST RATE PRAIRIE GROWTH
GRASS & WEEDS

WEST COR. WEST BET 10 & 15

2645.28 QUARTER SEC COR. {SET POST & RAISED A
MOUND OF EARTH & SOD

5290.56 INT. SEC COR

1965 BATTERMAN VOL 4 PG 236 DUG HOLE 18X6X7 FD NOTHING
AT N 1/4 COR SEC 15, RESET COR ACCORDING TO GOV
RULES (SINGLE PORP. MEASUREMENT AND ON A STRAIGHT
LINE) REFERENCED SAME. 9' NORTH OF NORTH PVMT
EDGE. 2645.30 TO NE & NW CORNERS OF SEC 15

1973 COMBS CSM VOL 3 PG 178 FD 2" PIPE

1993 KREBS CSM VOL 17 PG 59 FD PIPE 2644.64 TO FD R/R @
SE COR SEC 10

1989 LEE #12002 FD 2" IP N89-37-00E TO FD RR @ NE COR SEC
15

2000 LATHROP #7625 FD IRON PIPE EAST 2644.77 TO FD PK @
SE COR SEC 10

2002 MARTY #14357, #14329, & 14358 FD 2" IP. S89-40-49W
2644.58 TO ALUM MON @ SW COR SEC 10, N89-40-49E
2644.58 TO PK @ SE COR SEC 10.

FD 2 1/2 PIPE IN ENT. TO GEMETARY.

C) Was the corner restored through acceptance of (1) an obliterated evidence location, or, (2) a found perpetuated location?

ACCEPTED FD PIPE

D) Describe any material discrepancy between the location of the corner as restored or reestablished and the location of that corner as previously restored or reestablished by distance and direction. Show the discrepancy on the plan view drawing under (a), above. Show the distances between the corner as previously restored or reestablished and (1) the corner as restored or reestablished, and (2) to at least 4 of the witness monuments shown on the drawing in (a), above.

NONE

(E) Was the corner reestablished through lost corner proportionate methods? If so, show the method, including the directions and distances to other public land survey corners used as evidence or used for proportioning the corner location.

YES. BATTERMAN SET IT.

I, **Donald Barnes**, hereby certify that the corner location as identified by the corner code index was determined by me under my direction and control and that this U.S. Public Land Survey Monument Record is correct and complete to the best of my knowledge and belief.

Seal

Donald

Barnes

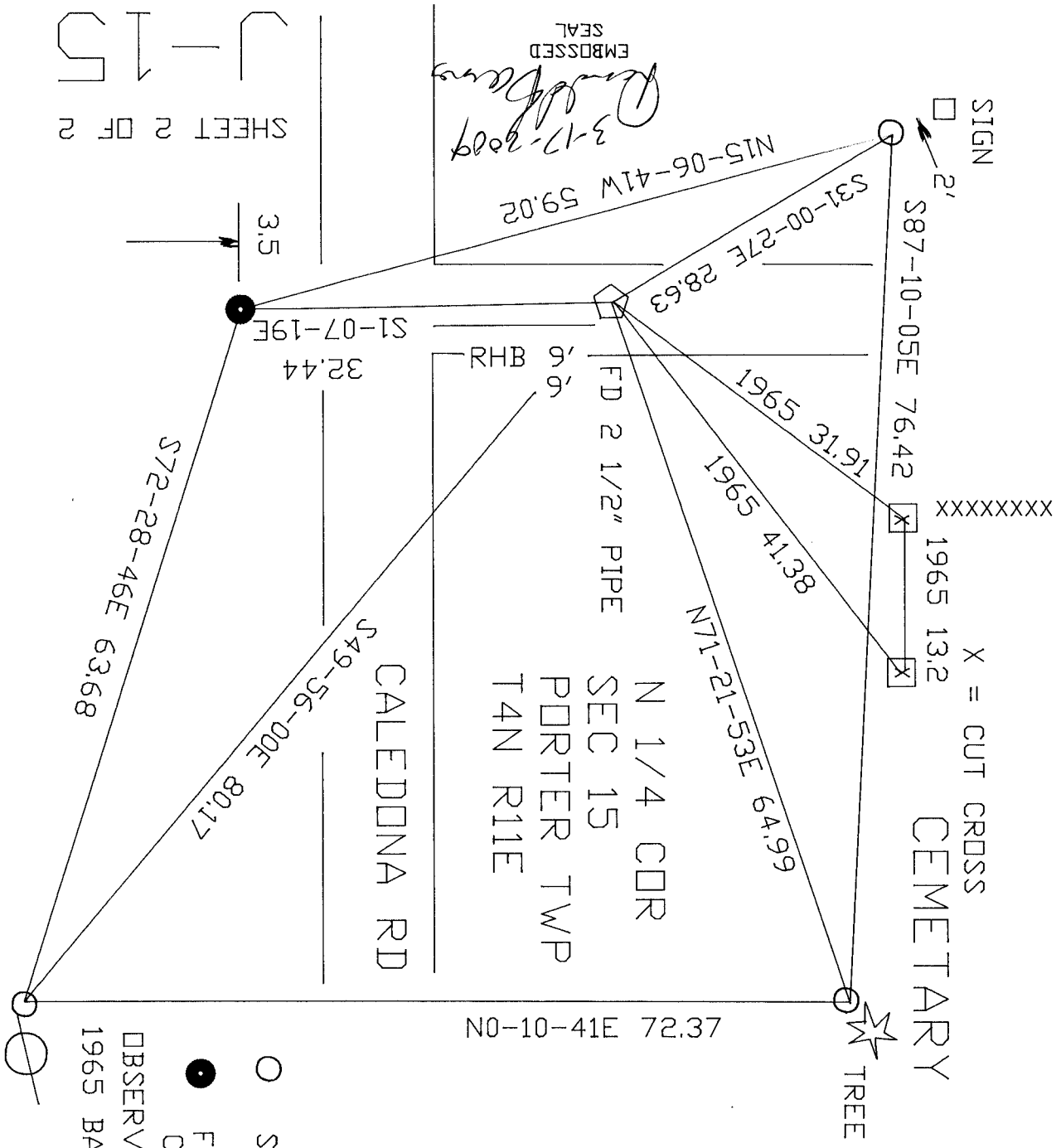
Barnes

3-17-2007

SHEET 1 OF 2

CORNER CODE **J-15**

A.E. 7.08 REQUIREMENT



SHEET 2 OF 2

- SET 3/4X24 RERDD
- FD RERDD PAINTED CP 2
- OBSERVATION SHEET #373 & 548
- 1965 BATTERMAN VOL 4 PG 236

NOT TO SCALE

ROCK COUNTY
 PROJECTION 2009 ADJ
 PLANNING & SURVEY
 ZEISS