

Paper weight-110# (minimum)

Black nonfading ink required

# U.S. PUBLIC LAND SURVEY MONUMENT RECORD

For Public Land Survey Corners In:  
T. 4 N. R. 11 E. 4th P.M.

WI ADMINISTRATIVE CODE A-E 7.08 REQUIREMENT  
REV 10/23/2004 USMONREC.DWG

### CORNER CODE INDEX

	1	2	3	4	5	6	7	8	9	10	11	12	13	14	15	16	17	18	19	20	21	22	23	24	25		
A																											A
B																											B
C																											C
D																											D
E																											E
F																											F
G																											G
H																											H
J																											J
K																											K
L																											L
M																											M
N																											N
O																											O
P																											P
Q																											Q
R																											R
S																											S
T																											T
U																											U
V																											V
W																											W
X																											X
Y																											Y
Z																											Z

PLACE MONUMENT SYMBOL  AT PROPER LOCATION ON ABOVE INDEX

PORTER TWP  
ROCK COUNTY WI

IF AVAILABLE  
ROCK COUNTY COORDINATES PREFERRED

North \_\_\_\_\_ Elev. \_\_\_\_\_

East \_\_\_\_\_

Hor. Datum \_\_\_\_\_ Vert. Datum \_\_\_\_\_

LATITUDE \_\_\_\_\_ ELLIPS. HT. \_\_\_\_\_

LONGITUDE \_\_\_\_\_

NAD83(91) \_\_\_\_\_ NETWORK ADJ. YR \_\_\_\_\_

GPS (X) \_\_\_\_\_ TRAVERSE (X) \_\_\_\_\_

BASED ON THE FOLLOWING CONTROL:  
\_\_\_\_\_

CORNER MONUMENT

WITNESS MONUMENT

(a)

BEARINGS ARE BASED ON: \_\_\_\_\_

FIELD BOOK \_\_\_\_\_ PAGE # \_\_\_\_\_

SHEET 1 OF 2

SHOW A PLAN VIEW DRAWING DEPICTING THE CORNER MONUMENT AND SURROUNDING PHYSICAL FEATURES, INCLUDING THE EXCAVATION AREA AND DEPTH.

PLANNING & ZONING COMMITTEE ADOPTED THIS FORM ON 12/2/1982

CORNER CODE P-5

PO575

E1/4CORSEC19

(B) Describe any record evidence, monument evidence, occupational evidence, testimonial evidence or any other material evidence you considered, and whether the monument was found or placed.

- 1833 HARRISON (NOV) T4N R11E 4<sup>TH</sup> MER. NORTH  
BET. 19 & 20  
1307.46 BURR OAK 12 IN DIAM  
2640.0 QUARTER SEC COR {BURR OAK 12 N5W 24.42';  
BURR OAK 12; BURR OAK 10} MARKED  
4418.04 BURR OAK 12 IN DIAM  
5280.0 COR TO SECS 17,18,19,20 {BURR OAK 12 S34E  
27.72'; BURR OAK 18 N30W 60.72'; BURR OAK  
18 S62W 116.82'; BURR OAK 18 N22E 60.72'  
LAND ROLLING 2<sup>ND</sup> RATE L?? MOSTLY RED &  
BURR OAK ?? GRASS & WEEDS
- 1868 LOCKE VOL 1 PG 329 & #3607 FD N.BT AND STUMP OF S BT  
AND OLD STAKE. SET BR OAK STAKE WITH HARD HEAD ON  
N.S.E. & W N. BT SHOULD BE N45W AND S. BT SHOULD BE  
S38E. VAR 8-04' OF E/W 1/4 LINE SEC 19. USED TO  
SUBDIVIDE SEC 19
- 1870 PORTER TWP RD REC BK 3 PG 2 COMMENCING AT THE  
QUARTER POST ON THE WEST SIDE OF SEC 20; THENCE  
RUNNING EAST ON LAND OWNER BY W. DRUMMOND OR AS  
MUCH THEREOF AS SHALL BE DEEMED UNNECESSARY FOR  
PUBLIC USE. FOR HIGHWAY TO BE DISCONTINUED AS  
FOLLOWS: COMMENCING AT THE QUARTER POST ON THE  
WEST SIDE OF SEC 20 AND RUNNING EAST ON LAND OWNED  
BY W. DRUMMOND, SUCH PORTION OF SAID ROAD TO BE  
DISCONTINUED.  
COMMENCING AT THE QUARTER POST ON SEC 20 EAST SIDE  
AND RUNNING EAST ON LAND OWNED BY W. DRUMMOND TO  
THE HOUSE OWNED BY MRS. E.A. RICHARDSON.
- 1899 BROWN VOL 2 PG 510 SET LIMESTONE 7X7X24  
SURROUNDED BY 4 HH 2673.99 TO NE & SE CORNERS OF  
SEC 19, 2661.12 TO CENTER OF SEC 19
- 1977 BARNES VOL 5 PF 264 FD 7X7X26 LIMESTONE  
SURROUNDED BY 1 HH & 3 FENCE POSTS. SET ALUM. MON  
& REFERENCED SAME. 2674 TO SW COR SEC 20. EAST SIDE  
OF FENCE POST @ FENCE INT.
- 1977 BARNES VOL 5 PG 275 2674 TO SW COR SEC 29
- 1977 COMBS CSM VOL 6 PG 292 ALUM MON SOUTH ALONG THE  
SEC LINE, S89-45E ALONG THE E/W 1/4 LINE OF SEC 20
- 1980 COMBS CSM VOL 10 PG 105 ALUM. MON. S89-45E 2665.11  
TO SET RR @ CENTER OF SEC 20.
- 1985 BARNES VOL 6 PG 346 SHOWS REC DISTANCES

**FD ALUM. MON. & REFERENCE PIPES.**

C) Was the corner restored through acceptance of (1) an obliterated evidence location, or, (2) a found perpetuated location?

**ACCEPTED FD ALUM. IN HARMONY WITH RECORD DISTANCES.**

D) Describe any material discrepancy between the location of the corner as restored or reestablished and the location of that corner as previously restored or reestablished by distance and direction. Show the discrepancy on the plan view drawing under (a), above. Show the distances between the corner as previously restored or reestablished and (1) the corner as restored or reestablished, and (2) to at least 4 of the witness monuments shown on the drawing in (a), above.

**NONE**

(E) Was the corner reestablished through lost corner proportionate methods? If so, show the method, including the directions and distances to other public land survey corners used as evidence or used for proportioning the corner location. **NO**

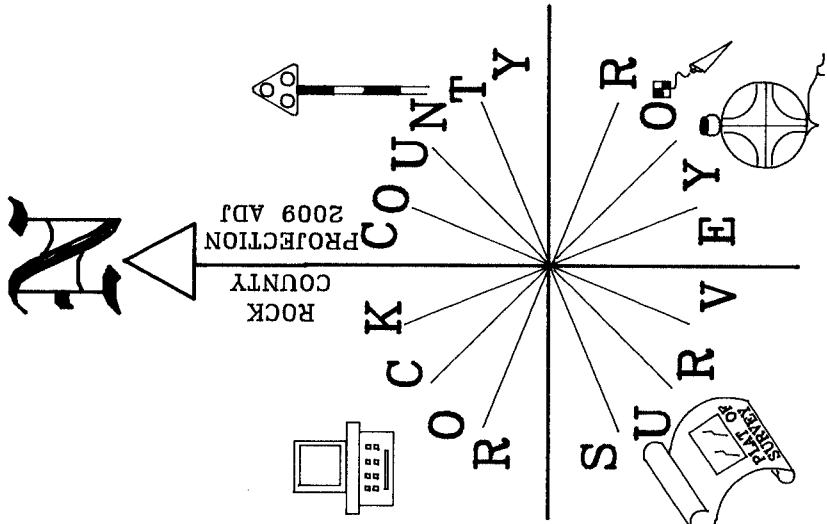
I, **Donald Barnes**, hereby certify that the corner location as identified by the corner code index was determined by me under my direction and control and that this U.S. Public Land Survey Monument Record is correct and complete to the best of my knowledge and belief.

Seal  
Emboss  
*Donald Barnes*

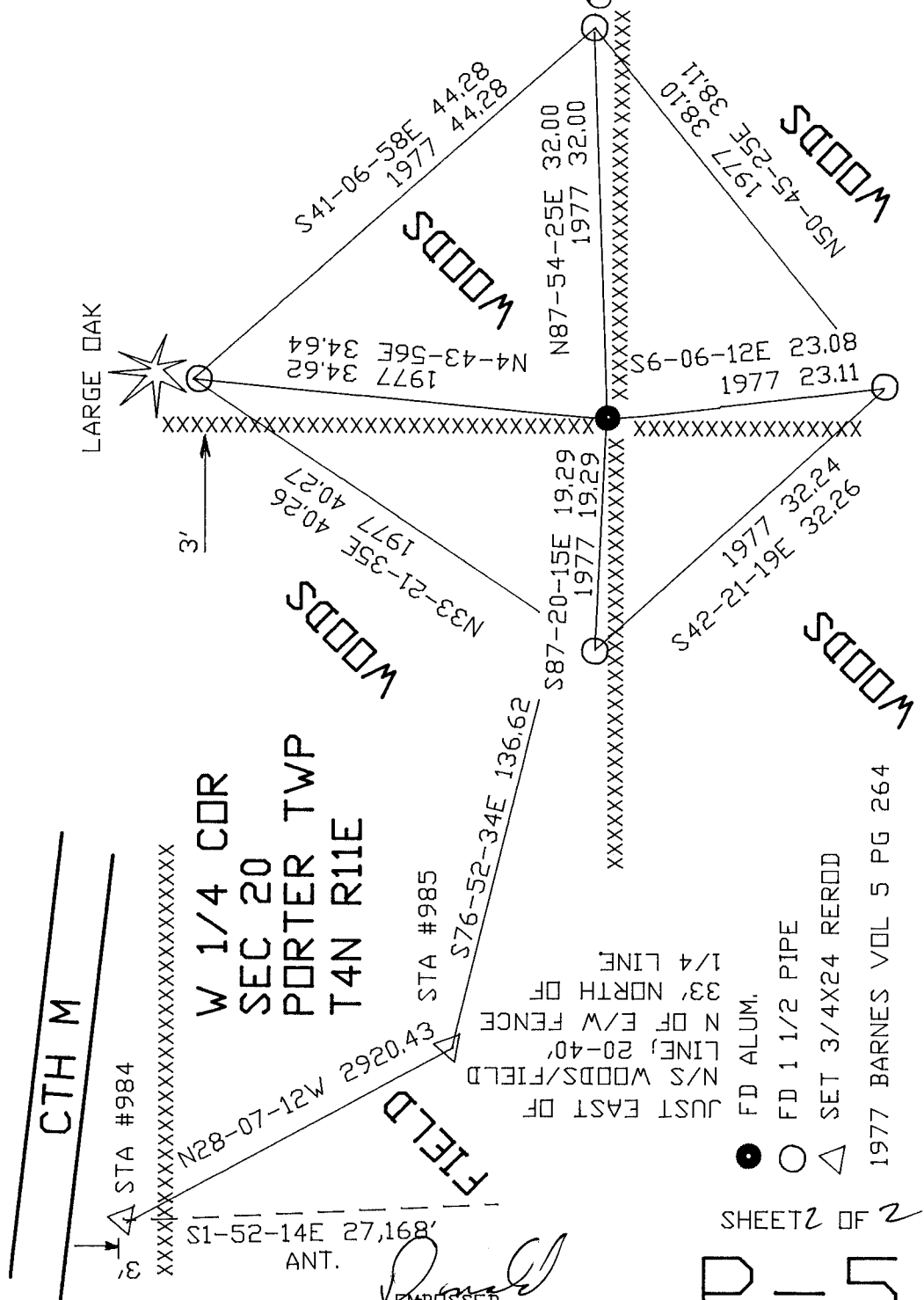
SHEET 1 OF 2

6-09-09

CORNER CODE **P-35**



ZEISS  
NOT TO SCALE



CTH M

STA #984

W 1/4 CDR  
SEC 20  
PORTER TWP  
T4N R11E

STA #985

JUST EAST OF  
N/S WOODS/FIELD  
LINE, 20-40'  
N OF E/W FENCE  
33' NORTH OF  
1/4 LINE

● FD ALUM.  
○ FD 1 1/2 PIPE  
△ SET 3/4X24 REROD

1977 BARNES VOL 5 PG 264

SHEET 2 OF 2

P-5

EMBLISHED  
SEAL  
*Barnes*  
6-9-09