

Paper weight-110# (minimum)

Black nonfading ink required

# U.S. PUBLIC LAND SURVEY MONUMENT RECORD

For Public Land Survey Corners In:

WI ADMINISTRATIVE CODE A-E 7.08 REQUIREMENT

T. 4 N. R. 11 E. 4th P.M.

REV 10/23/2004

USMONREC.DWG

### CORNER CODE INDEX

A	1	2	3	4	5	6	7	8	9	10	11	12	13	14	15	16	17	18	19	20	21	22	23	24	25	A	
B		6					5								4						3					2	B
C																											C
D																											D
E																											E
F																											F
G																											G
H																											H
J																											J
K																											K
L																											L
M																											M
N																											N
O																											O
P																											P
Q																											Q
R																											R
S																											S
T																											T
U																											U
V																											V
W																											W
X																											X
Y																											Y
Z																											Z

Porter TWP  
ROCK COUNTY WI

IF AVAILABLE  
ROCK COUNTY COORDINATES PREFERRED

North \_\_\_\_\_ Elev. \_\_\_\_\_

East \_\_\_\_\_

Hor. Datum \_\_\_\_\_ Vert. Datum \_\_\_\_\_

LATITUDE \_\_\_\_\_ ELLIPS. HT. \_\_\_\_\_

LONGITUDE \_\_\_\_\_

NAD83(91) \_\_\_\_\_ NETWORK ADJ. YR \_\_\_\_\_

GPS (X) \_\_\_\_\_ TRAVERSE (X) \_\_\_\_\_

BASED ON THE FOLLOWING CONTROL:

PLACE MONUMENT SYMBOL  AT PROPER LOCATION ON ABOVE INDEX

CORNER MONUMENT

WITNESS MONUMENT

BEARINGS ARE BASED ON: \_\_\_\_\_

FIELD BOOK \_\_\_\_\_ PAGE # \_\_\_\_\_

SHEET 1 OF 2

SHOW A PLAN VIEW DRAWING DEPICTING THE CORNER MONUMENT AND SURROUNDING PHYSICAL FEATURES, INCLUDING THE EXCAVATION AREA AND DEPTH.

PLANNING & ZONING COMMITTEE ADOPTED THIS FORM ON 12/2/1982

CORNER CODE L-5

PO555 E-1/4-COR-SEC18

(B) Describe any record evidence, monument evidence, occupational evidence, testimonial evidence or any other material evidence you considered, and whether the monument was found or placed.

1833 HARRISON (NOV) T4N R11E 4<sup>TH</sup> MER. NORTH  
BET. 17 & 18  
1558.26 BURR OAK 12 IN DIAM.  
2640.00 QUARTER SEC COR {BURR OAK 18  
N31W 10.56'; BURR OAK 12 N60E 27.06' BURR  
OAK 18; BURR OAK 12} MARKED  
2640 QUARTER SEC COR. { BUR O. 18 N31W 10.56';  
BURR O 12 N60E 27.06' BURR O 18, BURR O  
12} MARKED  
2739.0 ENTER PRAIRIE  
2842.62 ROAD E & W  
5280.0 SET COR TO SECS 7,8,17,18 SET POST AND  
RAISED MOUND OF EARTH & SOD LAND 1<sup>BT</sup> 1/2  
MILE SAME 2<sup>ND</sup> 1/2 ROLLING PRAIRIE 1<sup>BT</sup> RATE  
GROWTH GRASS & WEEDS.  
1895 BROWN VOL 2 PG 496 SET HH 26X10X10 SURROUNDED BY  
4 HH. 1337.49 TO LIMESTONE 20X14X5 @ N 1/16TH COR  
OF SW 1/4 SEC 17, 2674.98 TO CENTER OF SEC 17,  
5373.72 TO E 1/4 COR SEC 17  
1978 THOM CSM 8-212 FD ALUM. N89-48-48E 2675.00 TO SET IP  
@ CENTER OF SEC 17, N89-48-48E 5372.92 TO FD ALUM. @  
E 1/4 COR SEC 17  
1978 BARNES VOL 5 PG 495 FD POINTED HH 9X10X26  
SURROUNDED BY 4 HH. REPLACED WITH ALUM.  
1978 LEE CSM 8-379 FD ALUM. MON. SOUTHERLY 172.92 ALONG  
SEC LINE TO SET PIN.  
1986 BARNES VOL 6 PG 360 FD ALUM. NO-31-12E 2667.14 TO  
NE COR SEC 18, S89-27-55E 5372.62 TO E 1/4 COR SEC  
17, S0-39-47W 2661.97 TO SE COR SEC 18, & N89-40-29W  
5165.84 TO W 1/4 COR SEC 18.  
1988 BARNES J-5 FD ALUM. NO-35-21E 2667.14 TO NE COR SEC  
18.  
1999 COMBS #7496 ALUM. MON. EAST 5339.78 TO E 1/4 COR  
SEC 17  
2000 COMBS #07642 FD ALUM. EAST 5372.78 TO SET PIN @ E  
1/4 COR SEC 17.  
2003 KARNs #14565 ROCK COUNTY SURVEY COR FOUND. N89-  
48-48E TO ROCK COUNTY SURVEY COR FOUND @ E 1/4 COR  
SEC 17.  
2003 LATHROP CSM 26-224 FD ALUM. S1-15-24W 2629.09 TO CI  
@ SE COR SEC 18.

FD ALUM/ CARSONITE POST. REFERENCED ALUM.

C) Was the corner restored through acceptance of (1) an obliterated evidence location, or, (2) a found perpetuated location?

ACCEPTED FD ALUM.

D) Describe any material discrepancy between the location of the corner as restored or reestablished and the location of that corner as previously restored or reestablished by distance and direction. Show the discrepancy on the plan view drawing under (a), above. Show the distances between the corner as previously restored or reestablished and (1) the corner as restored or reestablished, and (2) to at least 4 of the witness monuments shown on the drawing in (a), above.

NONE

I, Donald Barnes, hereby certify that the corner location as identified by the corner code index was determined by me under my direction and control and that this U.S. Public Land Survey Monument Record is correct and complete to the best of my knowledge and belief.

Seal  
Donald  
Barnes  
Embloss

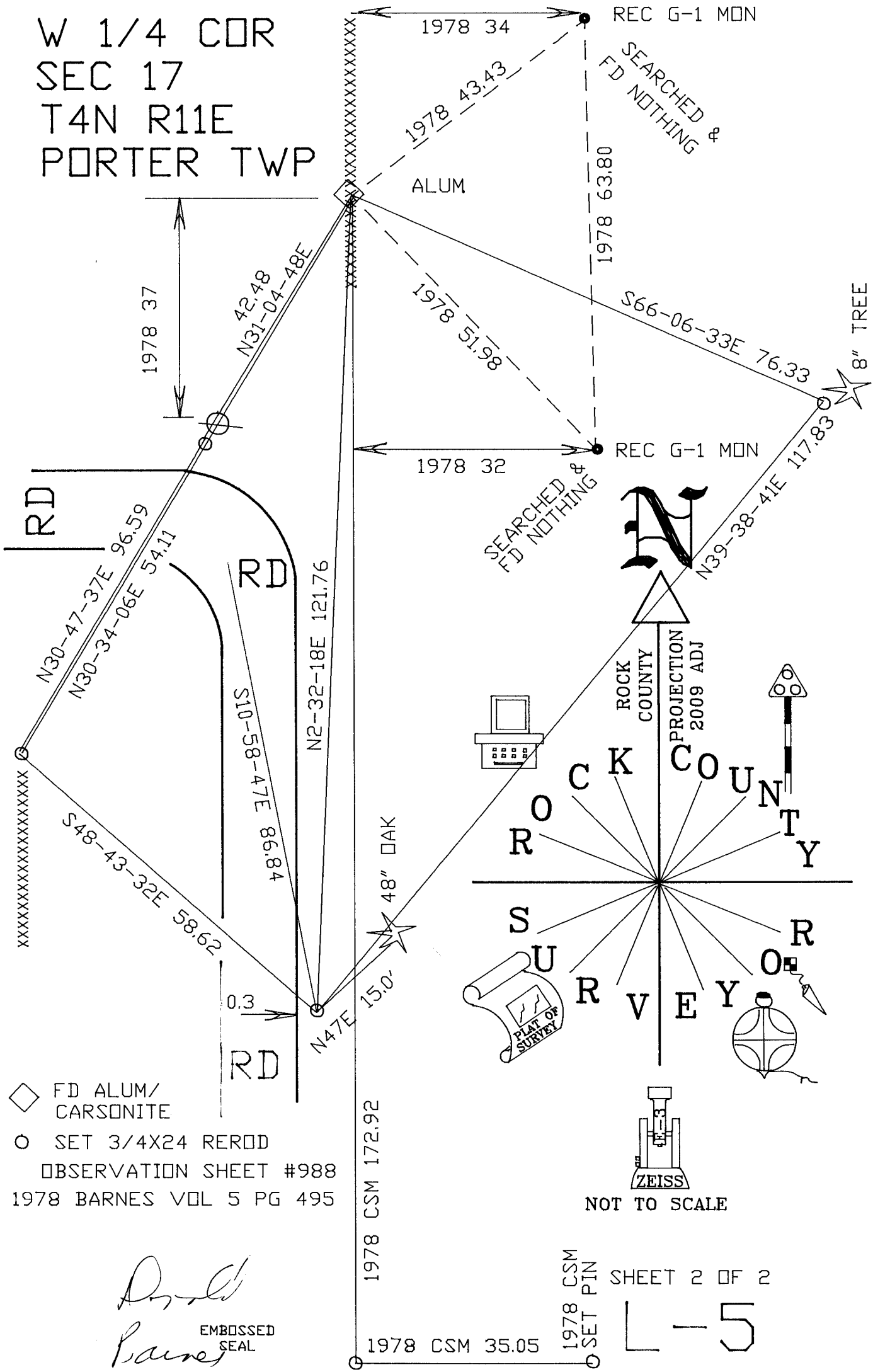
SHEET 1 OF 2

CORNER CODE L-5

A.E. 7.08 REQUIREMENT

Nov 5 2009

W 1/4 COR  
 SEC 17  
 T4N R11E  
 PORTER TWP



- ◇ FD ALUM/  
CARSONITE
- SET 3/4X24 REROD  
OBSERVATION SHEET #988  
1978 BARNES VOL 5 PG 495

ROCK COUNTY  
 PROJECTION  
 2009 ADJ

ROCK COUNTY  
 SURVEYOR

NOT TO SCALE

*Donald Barnes*  
 EMBOSSED SEAL  
 NOV 5 2009

1978 CSM  
 SET PIN SHEET 2 OF 2  
 L-5