

# PLAT AND RECORD

Of a Survey on Section 25 T 3 R 13 E. of the 4 P. M. in Harmony Township

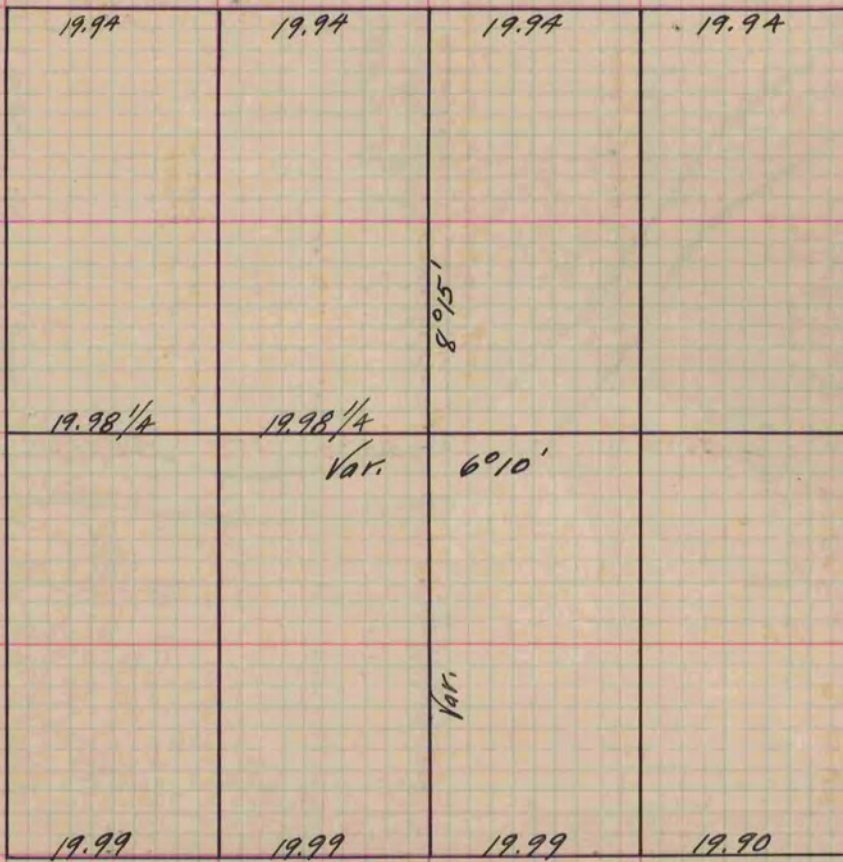
Rock County, Wisconsin, made February the 20<sup>th</sup> 1860

I hereby certify that the following is a correct record of said survey as made by me.

COUNTY BUILDING  
IN CITY OF BELOIT

(Signed) Edward Ruger  
ERM

County Surveyor.



*Copied From Page 133 Vol. 1. Original County Surveyor's Record.*