

PLAT AND RECORD

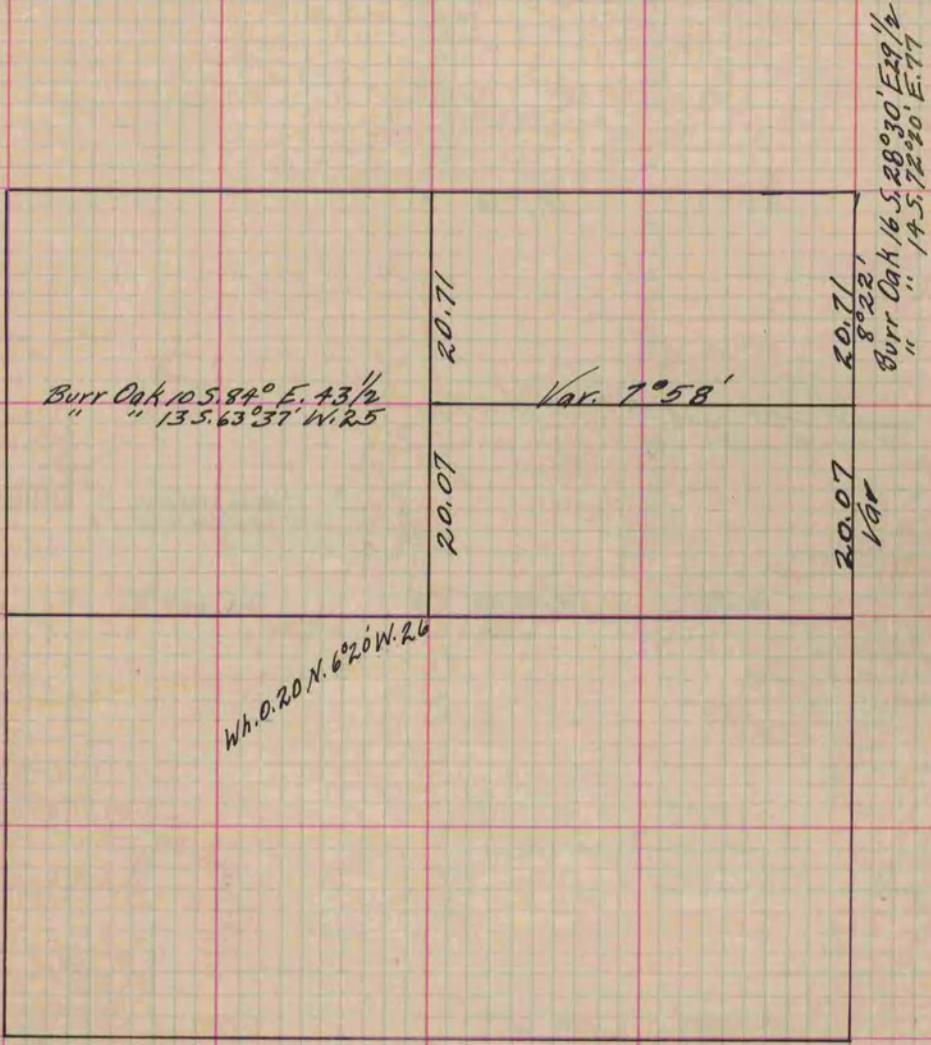
Of a Survey on Section 5 T 3 R 12 E. of the 4 P. M. in Janesville Township
Rock County, Wisconsin, made October the 8th 1860

I hereby certify that the following is a correct record of said survey as made by me.

COUNTY BUILDING
IN CITY OF БЕЛОIT

(Signed) Edward Ruger
ERT

County Surveyor.



Copied from Page 151 Vol. 1 Original County Surveyor's Record.