

PLAT AND RECORD

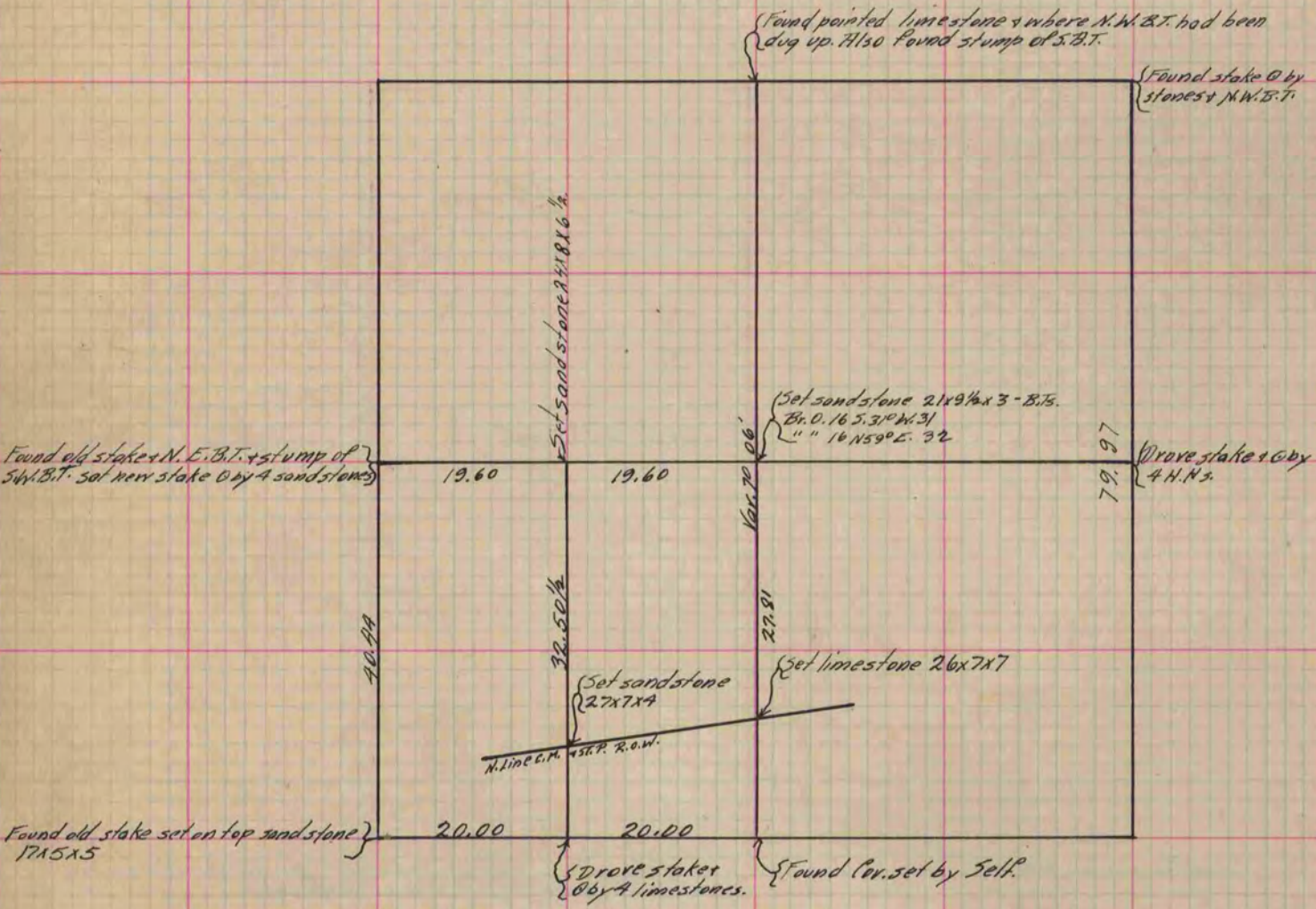
Of a Survey on Section 15 T 2 R 10 E. of the 4 P. M. in Spring Valley Township
Rock County, Wisconsin, made Dec. the 12 1882

I hereby certify that the following is a correct record of said survey as made by me.

COUNTY BUILDING
IN CITY OF БЕЛОIT

(Signed) Edward Ruger.
RMR

County Surveyor.



Copied from T. 322 Vol. 2 County Surveyor's Record.