

PLAT AND RECORD

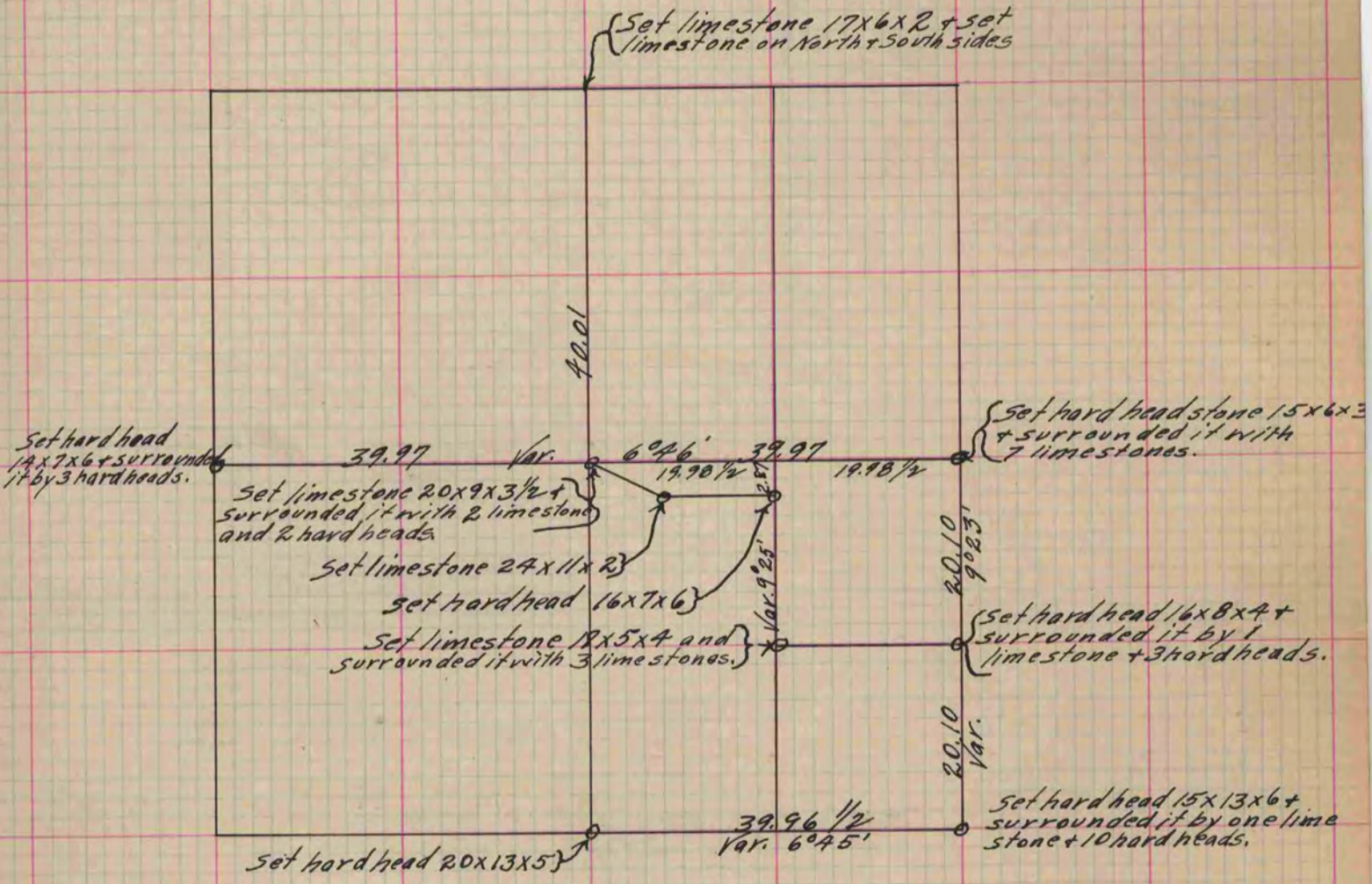
Of a Survey on Section 25 T 2 R 14 E. of the 4 P. M. in Bradford Township
Rock County, Wisconsin, made October the 18th 19

I hereby certify that the following is a correct record of said survey as made by me.

COUNTY BUILDING
IN CITY OF BELOIT

(Signed) Edward Ruger

County Surveyor.



Copied from Page 154 Vol. 1. Original County Surveyor's Record.