

# PLAT AND RECORD

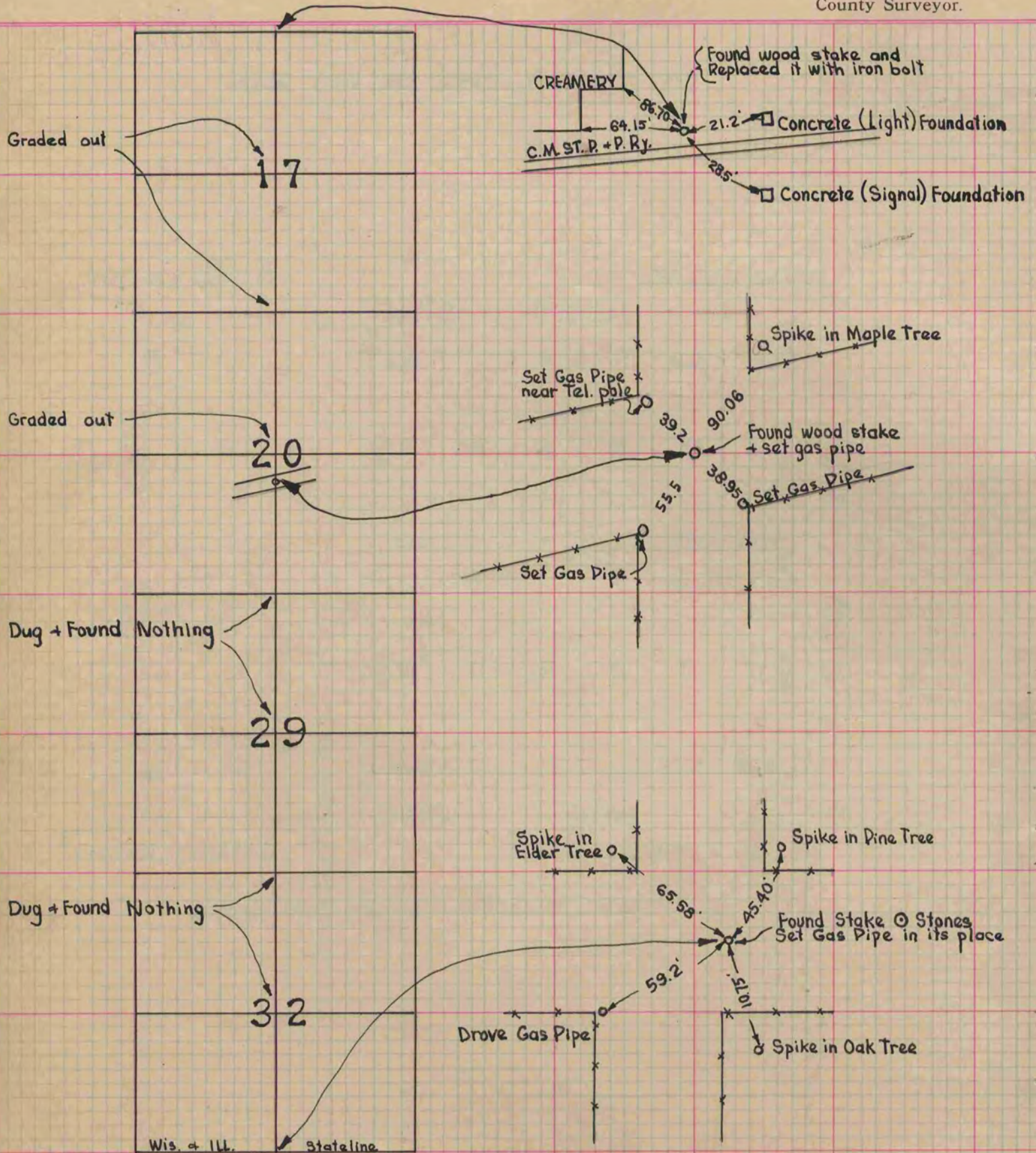
Of a Survey on Section 17-20-29-32T 1 R 14 E. of the 4 P. M. in Clinton Township

Rock County, Wisconsin, made August the 6, 7, 8<sup>th</sup> 1930

County Building  
IN CITY OF BELOIT  
I hereby certify that the following is a correct record of said survey as made by me.

R H B

County Surveyor.



#1803  
53/38-42