

PLAT AND RECORD

Of a Survey on Section 17 T 3 R 12 E. of the 4 P. M. in Janesville Township

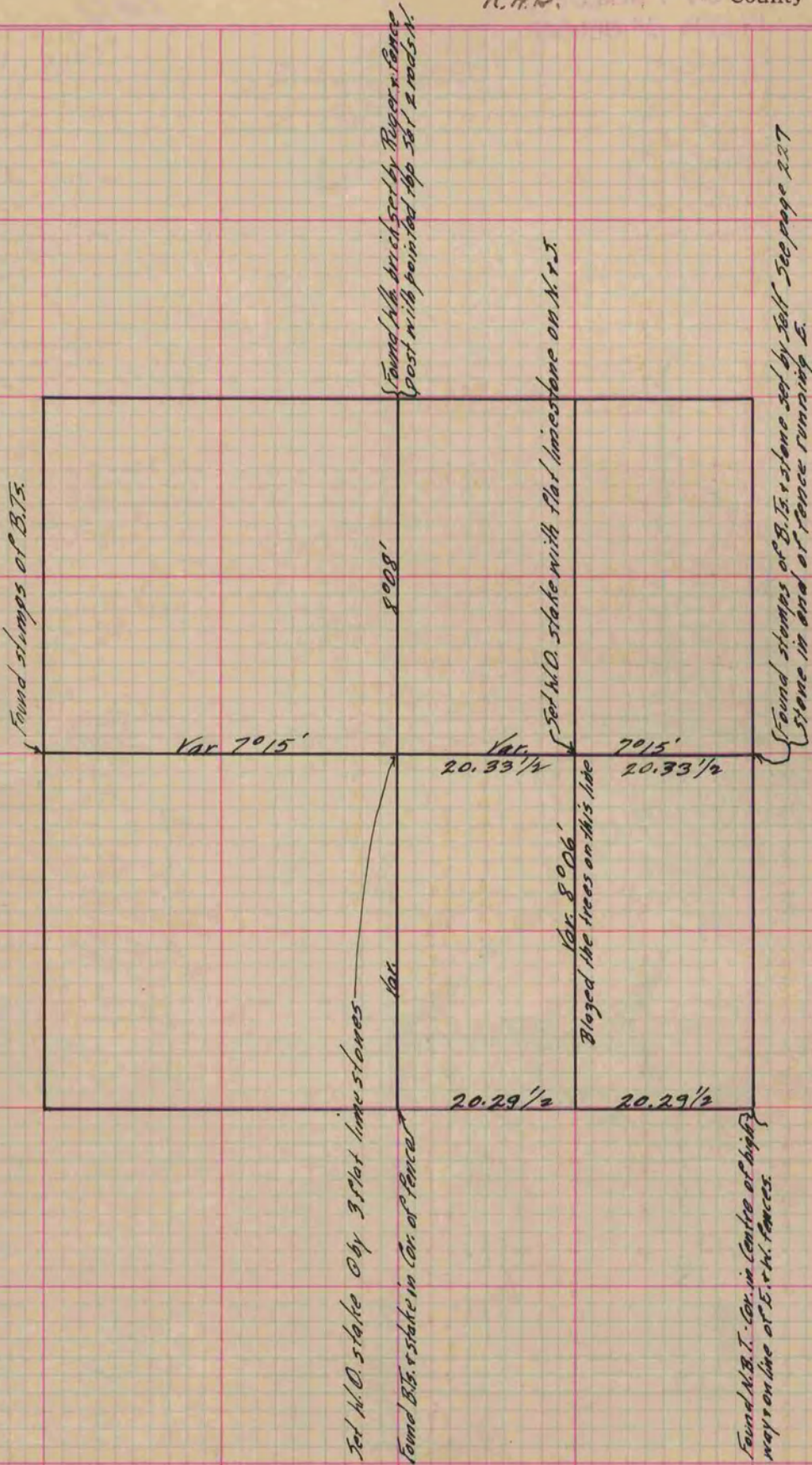
Rock County, Wisconsin, made January the 21 1868

I hereby certify that the following is a correct record of said survey as made by me.

COUNTY BUILDING
IN CITY OF БЕЛОIT

(Signed) S. D. Locke
R. H. B.

County Surveyor.



Copied from P. 260 Vol. 1 Original County Surveyor's Record.