

PLAT AND RECORD

12/12/75 DAB

S.W. 1/4 OF
N.W. 1/4 OF
Sec. 19

Of a Survey on Section Sec. 19 T 2 N R 11 E. of the 4 P. M. in Plymouth Township

Rock County, Wisconsin, made February the 25, 1932

I hereby certify that the following is a correct record of said survey as made by me.

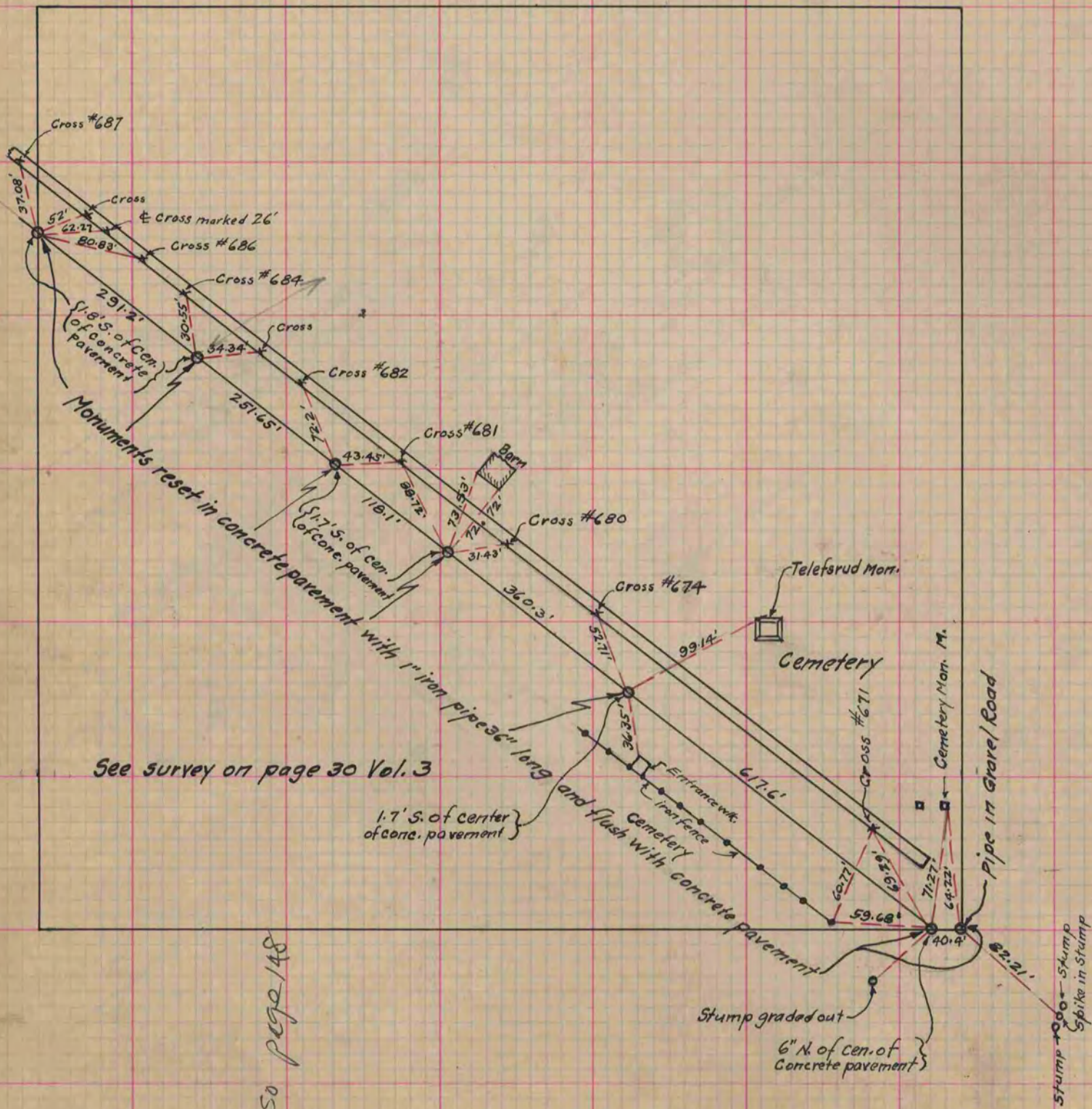
COUNTY BUILDING
IN CITY OF БЕЛОIT

B. Bunny
County Surveyor.

NOTE:

These monuments were referenced by R. H. Batterman April 7, 1930, preparatory to paving Highway #92, and reset by me as shown.

S.W. 1/4 OF N.W. 1/4 OF SEC. 19



See survey on page 30 Vol. 3

Also page 14