

PUBLIC LAND SURVEY MONUMENT RECORD

For Public Land Survey Corners in the

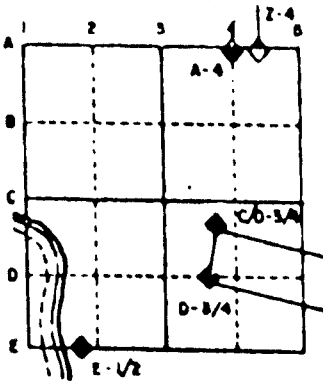
T. 1 N., R. 13 E.

CORNER CODE INDEX

	1	2	3	4	5	6	7	8	9	10	11	12	13	14	15	16	17	18	19	20	21	22	23	24	25
A																									
B																									
C																									
D																									
E																									
F																									
G																									
H																									
I																									
J																									
K																									
L																									
M																									
N																									
O																									
P																									
Q																									
R																									
S																									
T																									
U																									
V																									
W																									
X																									
Y																									
Z																									

PLACE MONUMENT SYMBOL (●) AT PROPER LOCATION ON ABOVE INDEX

EXAMPLE



TURTLE TWP
ROCK COUNTY WI

IF AVAILABLE
STATE PLANE COORDINATES

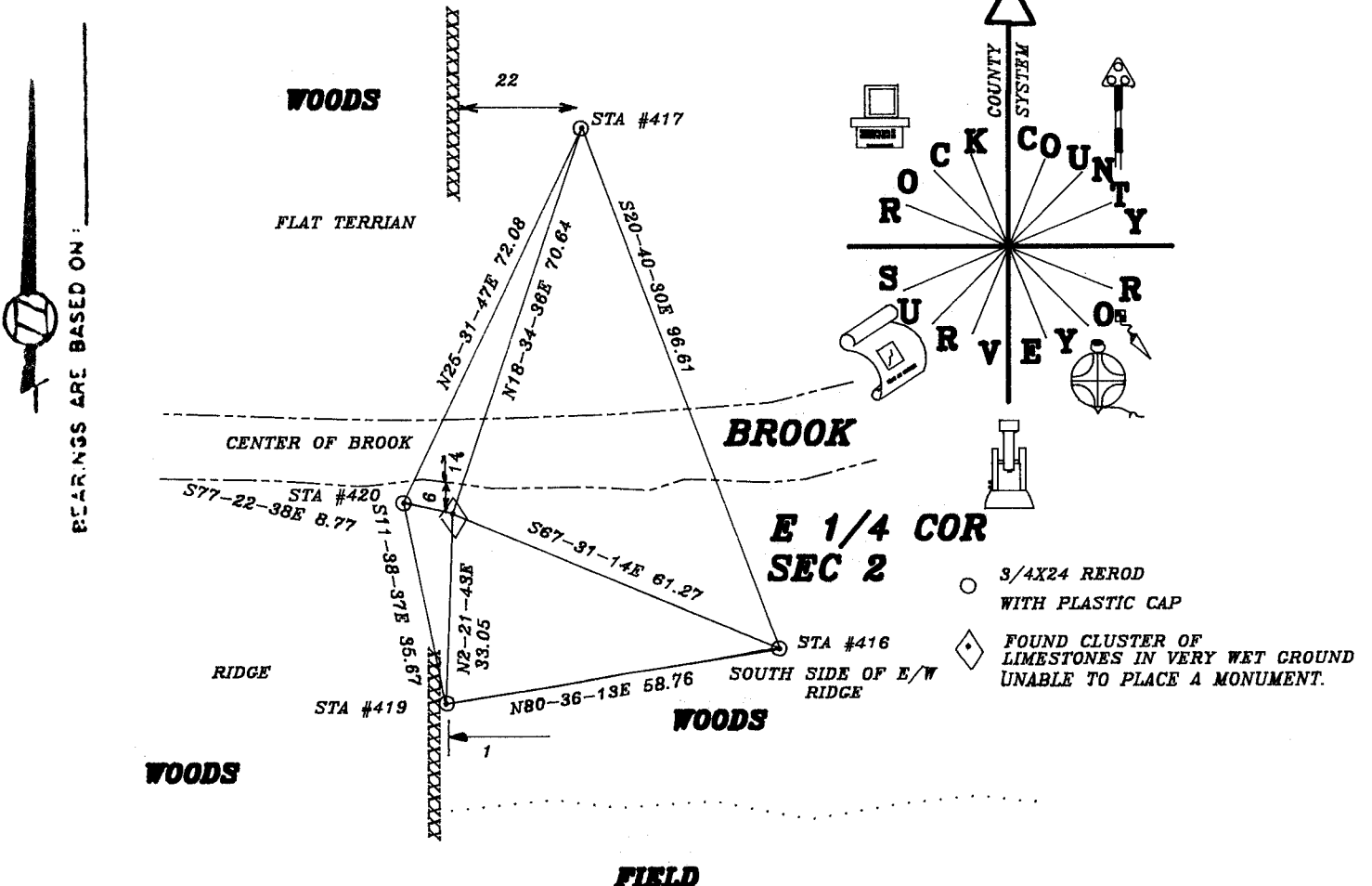
North (Y) 229,721.02 Eleve. (Z) _____

East (X) 522,696.93 Zone _____

Hor. Datum COUNTY Vert. Datum _____

◆ CORNER MONUMENT

○ WITNESS MONUMENT



TU519

(B) Describe any record evidence, monument evidence, occupational evidence, testimonial evidence or any other material evidence you considered, and whether the monument was found or placed.

1836 ORIGINAL FIELD NOTES. SET QUARTER POST ON SOUTH BANK OF BROOK 8 LINKS (5.28') WIDE ? WEST. IRON WOOD 7S25E 16' LYNN 12 S32W 11'

1864 RUGER VOL 1 PG 151 CALLS FOR VAR 7-16 TO SE, VAR 7-54 2921.82 TO NE, 2644.29 TO CENTER OF SECTION 2. WESTERLY 1025.14 TO LS 10X5X4 SURROUNDED BY 3 HH. W 1/4 CORNER TO CENTER OF SECTION 2 IS 2644.29. AT THE CENTER OF SECTION 2 IS A LS 24X9X3 1/2.

1867 LOCKE VOL 1 PG 294 FOUND CORNER AS SET BY RUGER & OLD BTs (STAKE) SURROUNDED BY 3 STONES. 2649.24 TO CENTER OF SECTION 1.

1876 RUGER VOL 2 PG 202 FOUND OLD STAKE & STONES. SET LS 16X8X4 IN PLACE. 2645.94 TO CENTER OF SECTION 2.

1882 HOLMES VOL 2 PG 354 FOUND STONE SET BY RUGER 2650.56 TO SW & 2654.52 TO CENTER OF SECTION 1.

19?? KERCH CALLS FOR AN ANGLE OF 92-06 AT THE E 1/4 COR OF SEC 1 FROM THE SE CORNER TO W 1/4 CORNERS OF SEC 1. ALSO CALLS FOR AN ANGLE OF 87-51 AT THE CENTER OF SEC 1 FROM THE E 1/4 COR TO S 1/4 CORNERS OF SEC 1.

1970 BATTERMAN JR. SEARCHED AND FOUND NOTHING.

USED ORIGINAL GOVERNMENT NOTES CALL DISTANCE TO BROOK, RUGER'S DISTANCES IN SEC 2, OCCUPATION, & KERCH'S ANGLES AND DISTANCES TO ESTABLISH POSITION. DID NOT PLACE A MONUMENT BECAUSE OF GROUND WATER.

C) Was the corner restored through acceptance of (1) an obliterated evidence location, or, (2) a found perpetuated location?

RESTORED CORNER THROUGH ACCEPTANCE OF OBLITERATED EVIDENCE LOCATION.

D) Describe any material discrepancy between the location of the corner as restored or reestablished and the location of that corner as previously restored or reestablished by distance and direction. Show the discrepancy on the plan view drawing under (a), above. Show the distances between the corner as previously restored or reestablished and (1) the corner as restored or reestablished, and (2) to at least 4 of the witness monuments shown on the drawing in (a), above.

(E) Was the corner reestablished through lost corner proportionate methods? If so, show the method, including the directions and distances to other public land survey corners used as evidence or used for proportioning the corner location.

NO

I, Donald Barnes, hereby certify that the corner points as identified by the corner code index were, in a field survey on, 1995, established, re-established, monumented, re-monumented, recovered or restored as expressed below and in conformance with the regulations and rules as required in the current manual of survey instructions of the United States Department of Interior, Bureau of Land Management.

seal

Donald Barnes
6/13/95

COUNTY SURVEYOR FILING DATA

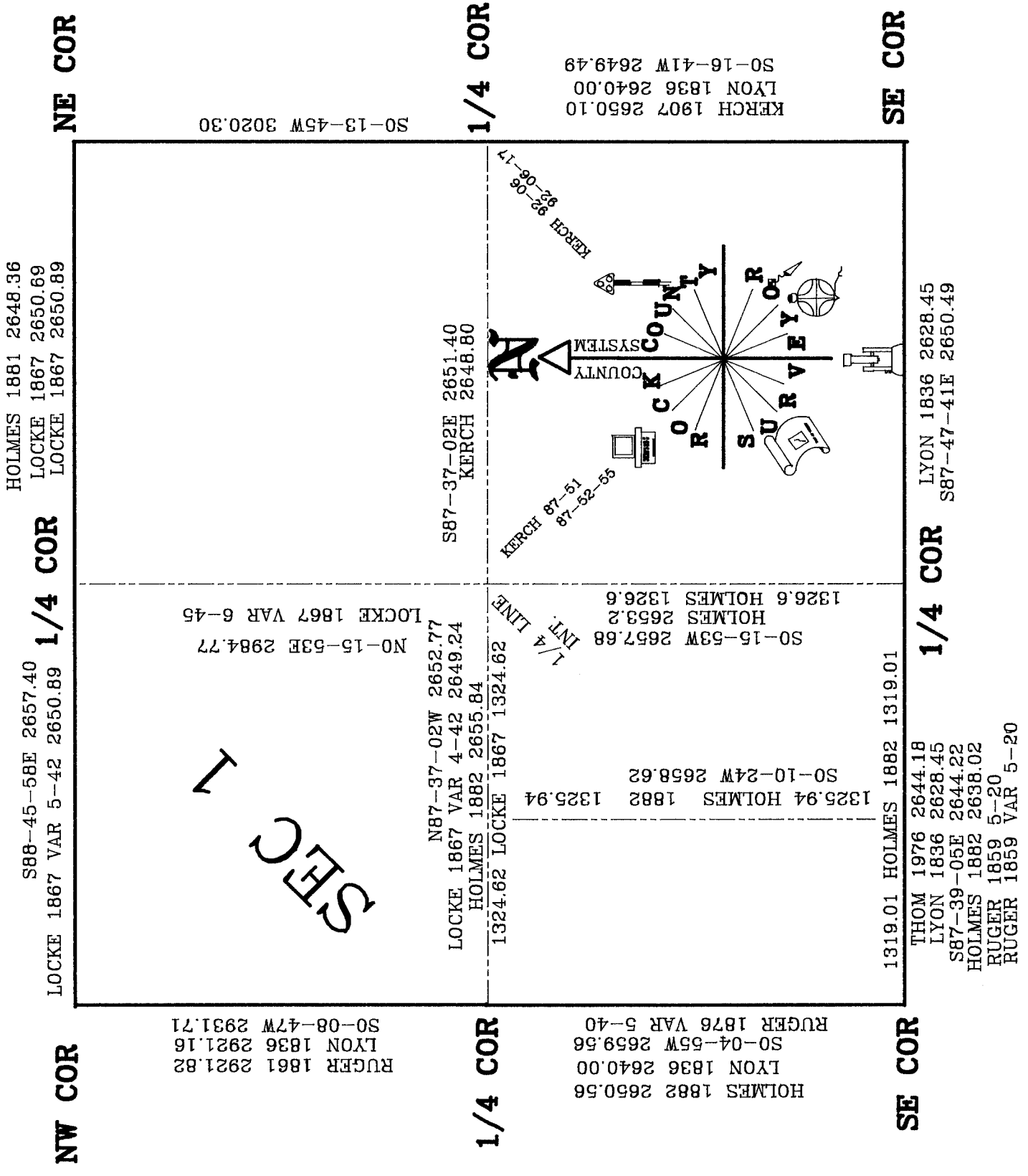
Date of computer entry _____

Date microfilmed _____

Number of included sheets _____
CORNER CODE

AFFIX YOUR LAND SURVEYOR SEAL

Daniel Barnes
6/9/95



120