

U.S. PUBLIC LAND AND SURVEY MONUMENT RECORD

For Public Land Survey Corners in the
T. 7 N., R. 13 E.

TURTLE TWP
ROCK COUNTY WI

CORNER CODE INDEX


A	1	2	3	4	5	6	7	8	9	10	11	12	13	14	15	16	17	18	19	20	21	22	23	24	25	26	27	28	29	30	31	32	33	34	35	36				
B																																								
C																																								
D																																								
E																																								
F																																								
G																																								
H																																								
I																																								
J																																								
K																																								
L																																								
M																																								
N																																								
O																																								
P																																								
Q																																								
R																																								
S																																								
T																																								
U																																								
V																																								
W																																								
X																																								
Y																																								
Z																																								

IF AVAILABLE
ROCK COUNTY COORDINATES PERFORMED

North 205,840.67 Elev. _____
East 522,619.97
Hor. Datum COUNTY Vert. Datum _____

GPS (X) _____ TRAVERSE (X)

BASED ON THE FOLLOWING CONTROL:

PLACE MONUMENT SYMBOL  AT PROPER LOCATION ON ABOVE INDEX

 CORNER MONUMENT

WITNESS MONUMENT

(a)

SEARINGS ARE BASED ON:

FIELD BOOK _____ PAGE # _____

SHOW A PLAN VIEW DRAWING DEPICTING THE CORNER MONUMENT AND SURROUNDING PHYSICAL FEATURES, INCLUDING THE EXCAVATION AREA AND DEPTH. THE CORNER MONUMENT SHALL HAVE THE FOLLOWING CHARACTERISTICS: 1) HAVE A LEAST TWO PREDETERMINED BREAK-OFF POINTS. 2) IF BROKEN LEAVE A PERMANENTLY MAGNETIZED REMNANT AT THE ORIGINAL POINT. 3) MUST BE EXTENDABLE. 4) THE CAP IS DISCRIMINATED. ROCK COUNTY SURVEY MONUMENT - PENALTY FOR DISTURBING MARKER \$100 OR AN EXISTING CUT LIMESTONE. AN IRON PIPE 1 1/2" DIAMETER MAY BE USED IN AREAS WHERE GROUND WATER IS WITHIN ONE FOOT OF THE SURFACE. IF THE CORNER IS OCCUPIED BY AN IMPROVEMENT DIAPHRAGM BURIED CARBON AND DURABLE, DISTINCT MATERIAL MAY BE USED. CORNERS SHALL BE DEPENDENT WITH AT LEAST 4 DURABLE WITNESS MONUMENTS. WITNESS MONUMENTS SHALL BE MADE OF CONCRETE, NATURAL STONE, IRON OR OTHER EQUALLY DURABLE MATERIAL EXCEPT WOOD. DESCRIBE THE CORNER AND THE WITNESS MONUMENTS.

SHEET 1 OF 2

PLANNING & ZONING COMMITTEE ADOPTED THE ABOVE FORM ON 12/2/1992
WI ADMINISTRATIVE CODE A-E 709 REQUIREMENT

CORNER CODE

V21

TU611

(B) Describe any record evidence, monument evidence, occupational evidence, testimonial evidence or any other material evidence you considered, and whether the monument was found or placed.

- 1836 LYON SET POST CORNER TO SECTIONS 25,26,35,&36. BUR OAK 12 S35E 13.2' & BUR OAK 13 N61W 49.5'
- 1861 HOBART VOL 1 PG 157 STATES NOTHING ABOUT CORNER. CALLS FOR 2643.96 TO N 1/4 COR SEC 36.
- 1961 BATTERMAN JR. VOL 4 PG 88 FOUND 1" PIPE & USED IT TO ESTABLISH THE N 1/4 CORNER OF SEC 35 AT SINGLE PROPORTIONATE DISTANCE. CALLS FOR 2663.20 TO N 1/4 COR SEC 35.
- 1962 BATTERMAN JR. VOL 4 PG 64 FOUND 1" PIPE & REFERENCED SAME.
- 1979 BARNES VOL 5 PG 533 CALLS FOR 2653.57 TO W 1/4 COR SEC 36.
- 1980 BARNES VOL 6 PG 78. FOUND PIPE. CALLS FOR 2652 TO W 1/4 COR SEC 25,2643.96 TO S 1/4 COR SEC 25,& AN ANGLE OF 92-05-00 FROM W 1/4 COR OF SEC 25 TO S 1/4 COR SEC 25.

FOUND 1" PIPE & 2 RECORD REFERENCE PIPES.

C) Was the corner restored through acceptance of (1) an obliterated evidence location, or, (2) a found perpetuated location?
ACCEPTED FOUND PERPETUATED LOCATION.

D) Describe any material discrepancy between the location of the corner as restored or reestablished and the location of that corner as previously restored or reestablished by distance and direction. Show the discrepancy on the plan view drawing under (a), above. Show the distances between the corner as previously restored or reestablished and (1) the corner as restored or reestablished, and (2) to at least 4 of the witness monuments shown on the drawing in (a), above.

(E) Was the corner reestablished through lost corner proportionate methods? If so, show the method, including the directions and distances to other public land survey corners used as evidence or used for proportioning the corner location.
NO

I, Donald Barnes, hereby certify that the corner points as identified by the corner code index were, in a field survey on,1994, established, re-established, monumented, re-monumented, recovered or restored as expressed below and in conformance with the regulations and rules as required in the current manual of survey instructions of the United States Department of Interior, Bureau of Land Management.

seal

COUNTY SURVEYOR FILING DATA

Date of computer entry _____

Date microfilmed _____

Number of included sheets _____
CORNER CODE

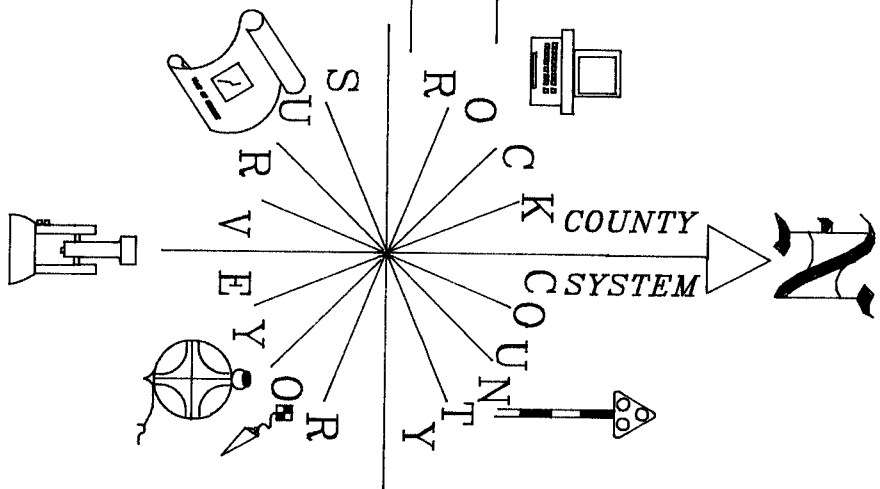
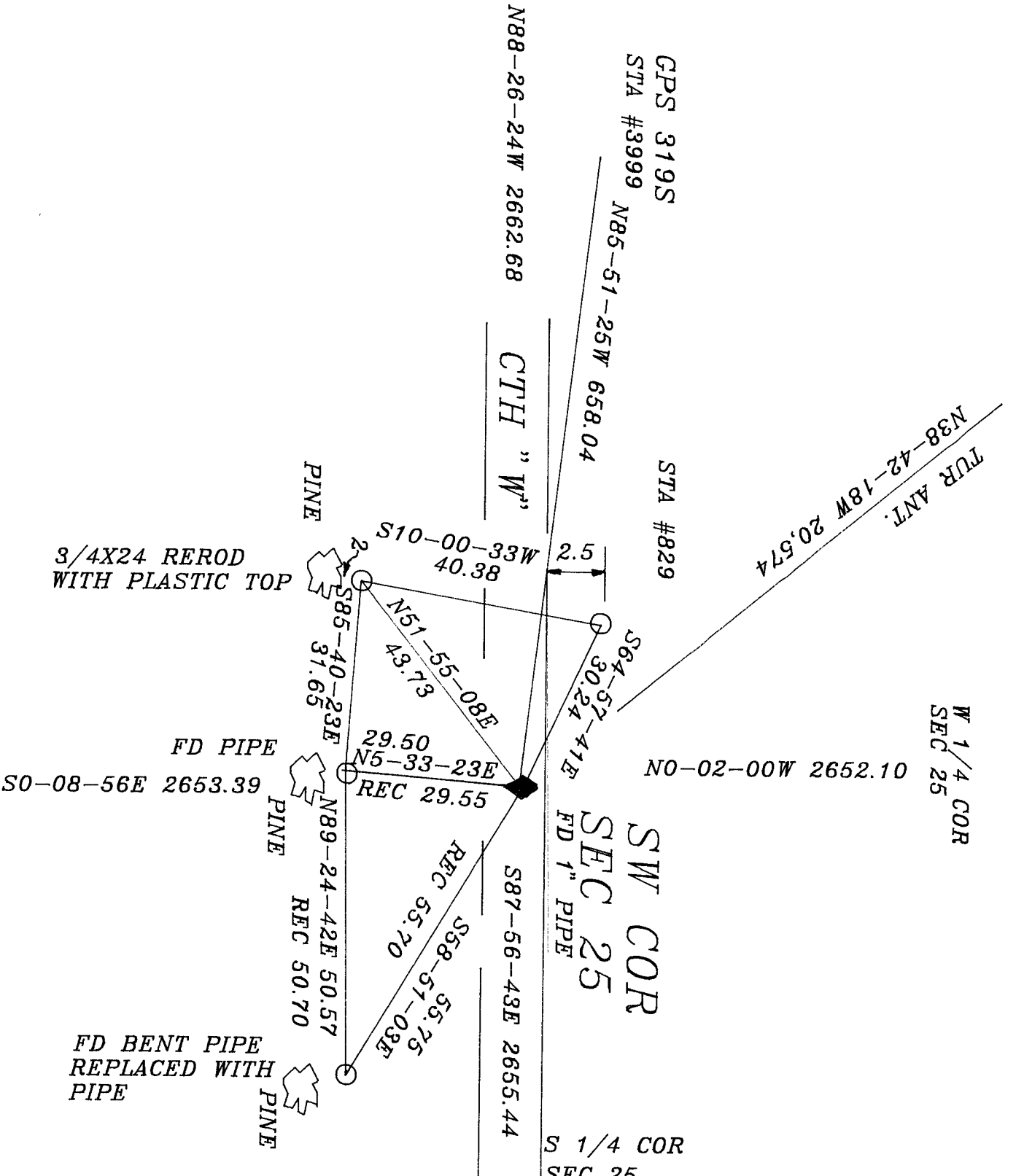
Donald Barnes
6/13/95

S 1/4 COR
SEC 26

W 1/4 COR
SEC 25

S 1/4 COR
SEC 25

W 1/4 COR 36



David J. Barnes
6-12-95