

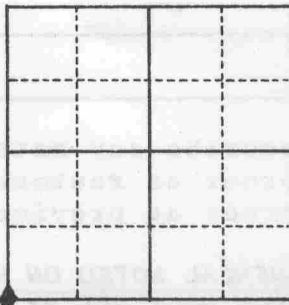
U.S. PUBLIC LAND SURVEY MONUMENT RECORD

For Public Land Survey Corners in the
BELOIT T. 1 N., R. 12 E.

For Miscellaneous Corners within Sec.
36, T. 1 N., R. 12 E.

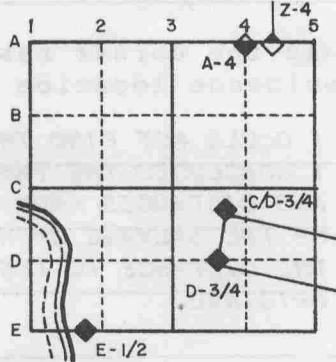
CORNER CODE INDEX

	1	2	3	4	5	6	7	8	9	10	11	12	13	14	15	16	17	18	19	20	21	22	23	24	25
A																									
B																									
C	6																								
D		5																							
E			4																						
F				3																					
G					2																				
H																									
I																									
J																									
K																									
L																									
M																									
N																									
O																									
P																									
Q																									
R																									
S																									
T																									
U																									
V																									
W																									
X																									
Y																									
Z																									



1. Above code numbers are positioned Meander, Claim, or Fractional corners of the section.
2. Township corner code numbers shall be applied to the corners of above typical section.

EXAMPLE



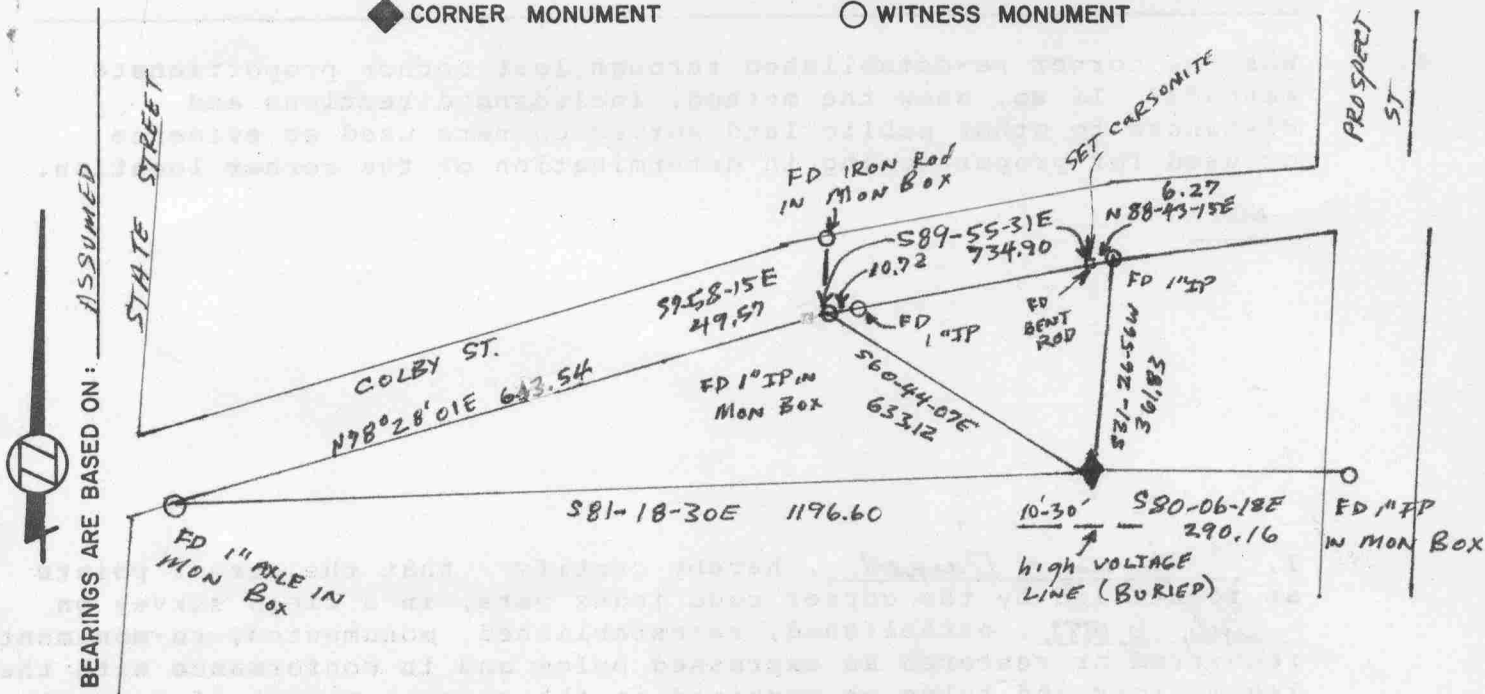
PLACE MONUMENT SYMBOL (◆) AT PROPER LOCATION ON ABOVE INDEX

IF AVAILABLE
STATE PLANE COORDINATES

North (Y) _____ Eleve. (Z) _____
 East (X) _____ Zone _____
 Hor. Datum _____ Vert. Datum _____

◆ CORNER MONUMENT

○ WITNESS MONUMENT



MICROFILMED

SHOW A PLAN VIEW DRAWING DEPICTING THE CORNER MONUMENT AND SURROUNDING PHYSICAL FEATURES, INCLUDING THE EXCAVATION AREA AND DEPTH. THE CORNER MONUMENT SHALL HAVE THE FOLLOWING CHARACTERISTICS: 1) HAVE AT LEAST TWO PREDETERMINED BREAK-OFF POINTS. 2) IF BROKEN, LEAVE A PERMANENTLY MAGNETIZED REMNANT AT THE ORIGINAL POINT. 3) MUST BE EXTENDABLE. 4) THE CAP IS INSCRIBED: ROCK COUNTY SURVEY MONUMENT - PENALTY FOR DISTURBING MARKER. 5) OR AN EXISTING CUT LIMESTONE. AN IRON PIPE 1 1/2" x 4'0" (MINIMUM) WITH AT LEAST 4 DURABLE WITNESS MONUMENTS MAY BE USED IN AREAS WHERE GROUND WATER IS WITHIN 1.0' OF THE SURFACE. IF THE CORNER IS OCCUPIED BY AN IMPROVEMENT (MANHOLE, BURIED CABLE, ETC.), ANY DURABLE, DISTINCT MONUMENT MAY BE USED AND REFERENCED WITH AT LEAST 4 DURABLE WITNESS MONUMENTS.

CORNER CODE : Z-21

1. Describe any record evidence, monument evidence, occupational evidence, testimonial evidence or any other material evidence you considered and whether the monument was found or set.

CORNER IS IN SALVAGE YARD. DUG 12' TO NATURAL GROUND & 2' IN NATURAL GROUND. AND FOUND NOTHING. IN 1946 SHIMEAL FOUND A BROKEN LIMESTONE 2'X25'X1.5' IN NATURAL GROUND, WHICH WAS 8.5' BELOW SURFACE OF GROUND. HE SET A 1"X8' ROD.

2. Describe any material discrepancy between the location of the corner as restored or re-established and the location of that corner as previously restored or re-established.

SHIMEAL NOTED ON HIS SURVEY THE STONE WAS 10.56' EAST & 5.70' NORTH OF THE IRON BOLT SET BY BATTERMAN. BATTERMAN SET THE BOLT FROM TIES TAKEN FROM ALLEN, A SURVEYOR IN SOUTH BELOIT, IN ABOUT 1910.

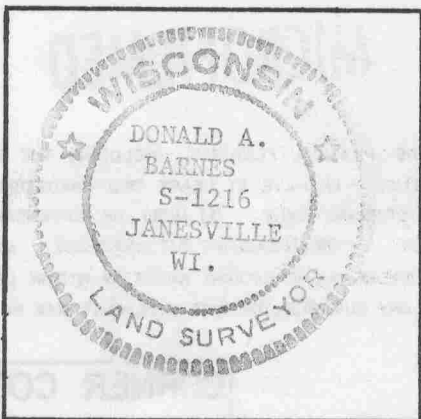
3. Was the corner restored through acceptance of an obliterated evidence location or a found perpetuated location.

I COULD NOT FIND THE IRON ROD. DUE TO THE DEPTH AND NATURE OF THE FILL I CONCLUDED THE ROD WAS DESTROYED. I SET THE CORNER USING THE BEARINGS AND DISTANCES FROM SHIMEAL'S MONUMENTS. NOTHING WAS PHYSICALLY SET BECAUSE OF THE SALVAGE OPERATION. THE DISTANCE TO THE S1/4 COR OF SEC 36 (2644.70 REC) IS IN HARMONY WITH THE ORIGINAL.

4. Was the corner re-established through lost corner proportionate methods? If so, show the method, including directions and distances to other public land survey corners used as evidence or used for proportioning in determination of the corner location.

NO

I, Donald Barnes, hereby certify that the corner points as identified by the corner code index were, in a field survey on July 6, 1982, established, re-established, monumented, re-monumented, recovered or restored as expressed below and in conformance with the regulations and rules as required in the current manual of survey instructions of the United States Department of Interior, Bureau of Land Management.



COUNTY SURVEYOR FILING DATA

Date of Computer Entry _____

Date Received _____

Date Microfilmed Nov 2 1984

Treasurer's Receipt No. _____

Number of Included Sheets 0

AFFIX YOUR LAND SURVEYOR SEAL.

ZZI