

Describe any record evidence, monument evidence, occult evidence, testimonial evidence or any other material evidence you considered, and whether the monument was found or placed.

- 1836 LYON SET QUARTER SECTION POST. BEARING TREES: WHITE OAK 32 S25E 21.12', BUR OAK 9 N50 1/2E 14.52'
- 1840 HOPKINS BK 1 PG 1B. NORTH ONE AND 3/4 DEGREES EAST TO THE QUARTER STAKE BETWEEN SECTIONS, ON THIS COURSE IT IS EIGHT CHAINS, ONE LINK (528.66), TO THE SOUTH SIDE OF RACE STREET.
- 1882 RUGER VOL 2 PG 406 FOUND STONE MONUMENT & NE BT AND WHERE STUMPS OF SE BT HAD DECAYED TOOK NEW BTS: HICKORY 5 S39E 32, BR OAK 7 S46W 18 1/2, HICKORY 6 S64 1/2W 49. CALLS FOR 2630.1 TO THE NW CORNER OF SECTION 36.
- 19?? R.H. BATTERMAN FIELD BOOK. CALLS FOR THE W 1/4 CORNER OF SECTION 36 AND SHOWS TIES TO THE WINDOW CORNERS AS SHOWN IN DIAGRAM.
- 1965 LEE CSM VOL 1 PG 112 & 119 SHOWS COURSE AND DISTANCE TO CORNER.

FOUND PIECE OF WOOD HUB. USED TIES TO PLACE POLY MONUMENT.

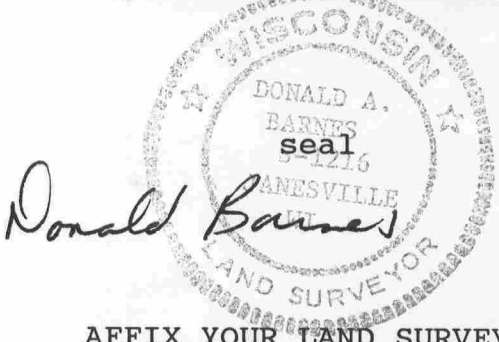
C) Was the corner restored through acceptance of (1) an obliterated evidence location, or, (2) a found perpetuated location?

ACCEPTED FOUND PERPETUATED LOCATION.

D) Describe any material discrepancy between the location of the corner as restored or reestablished and the location of that corner as previously restored or reestablished by distance and direction. Show the discrepancy on the plan view drawing under (a), above. Show the distances between the corner as previously restored or reestablished and (1) the corner as restored or reestablished, and (2) to at least 4 of the witness monuments shown on the drawing in (a), above.

(E) Was the corner reestablished through lost corner proportionate methods? If so, show the method, including the directions and distances to other public land survey corners used as evidence or used for proportioning the corner location.

I, Donald Barnes, hereby certify that the corner points as identified by the corner code index were, in a field survey on, JULY 6, 1992, established, re-established, monumented, re-monumented, recovered or restored as expressed below and in conformance with the regulations and rules as required in the current manual of survey instructions of the United States Department of Interior, Bureau of Land Management.



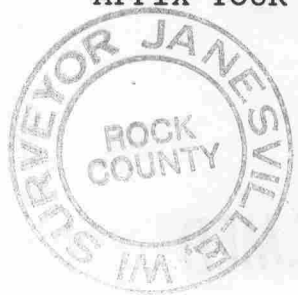
COUNTY SURVEYOR FILING DATA

Date of computer entry _____

Date microfilmed _____

Number of included sheets 1 / X-2 / CORNER CODE

AFFIX YOUR LAND SURVEYOR SEAL



sheet 1 of 2

15-X



◇ W 1/4 COR SEC 25

NO-11-18E 2641.25
RUGER 1882 2630.1

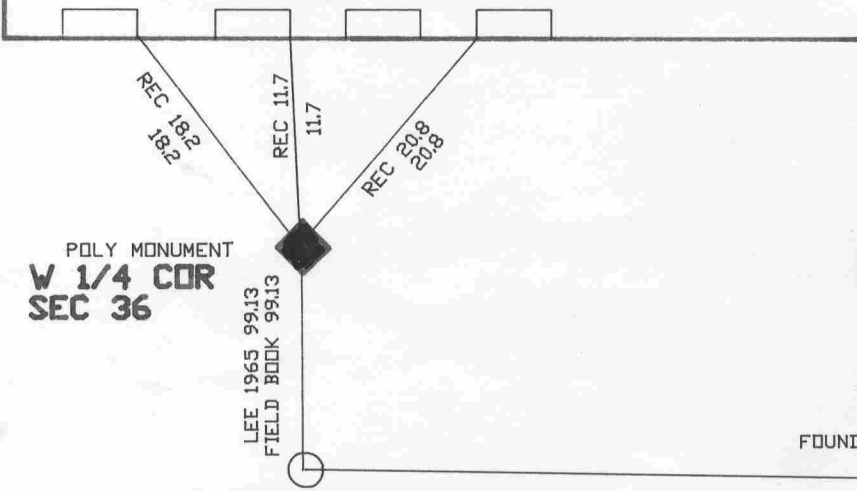
◇ NW COR SEC 36

NO-27-36E 2631.76
RUGER 1882 2630.10

PEARSONS HALL

CLARY ST

1ST WINDOW 2ND WINDOW 3RD WINDOW 4TH WINDOW



POLY MONUMENT
W 1/4 COR
SEC 36

LEE 1965 99.13
FIELD BOOK 99.13

FOUND 1' PIPE LAYING
HORIZONTALLY. POSITION FALLS
IN RETAINING WALL.

COLLEGE ST

PARK AVE.

FOUND 1/2' PIN

NO-00-13E 1137.49
NO-00-13E VOL 1 PG 112,119 1137.70

LEE 1965 CSM
NE COR
OF INT.

FOUND 1' PIPE

FOUND 2' PIPE
NE COR
OF INT.

BATTERMAN FIELD BOOK
LEE 1965 90-18-12
90-18-30
90-18-01

FIELD BOOK 741.98
N89-42-12E 742.12

CHAPIN ST

LEE 1965 CSM VOL 1 PG 1965 1379.35

NO-11-22E 2638.27

◇ SW COR SEC 36

SHEET 2 OF 2

X 21