

U.S. PUBLIC LAND SURVEY MONUMENT RECORD

For Public Land Survey Corners in:

WI ADMINISTRATIVE CODE A-E 7.08 REQUIREMENT

T. 1N., R. 12E

CORNER CODE INDEX

A	1	2	3	4	5	6	7	8	9	10	11	12	13	14	15	16	17	18	19	20	21	22	23	24	25
B																									
C	6	5	4	3	2	1																			
D																									
E																									
F	7	8	9	10	11	12																			
G																									
H																									
J																									
K	18	17	16	15	14	13																			
L																									
M																									
N																									
O																									
P	19	20	21	22	23	24																			
Q																									
R																									
S	30	29	28	27	26	25																			
T																									
U																									
V																									
W																									
X	31	32	33	34	35	36																			
Y																									
Z																									

BELoit TWP
ROCK COUNTY WI

IF AVAILABLE
ROCK COUNTY COORDINATES PREFERRED

North 216,899.09 Elev. _____

East 491,025.25

Hor. Datum COUNTY Vert. Datum _____

LATITUDE _____ ELLIPS. HT. _____

LONGITUDE _____

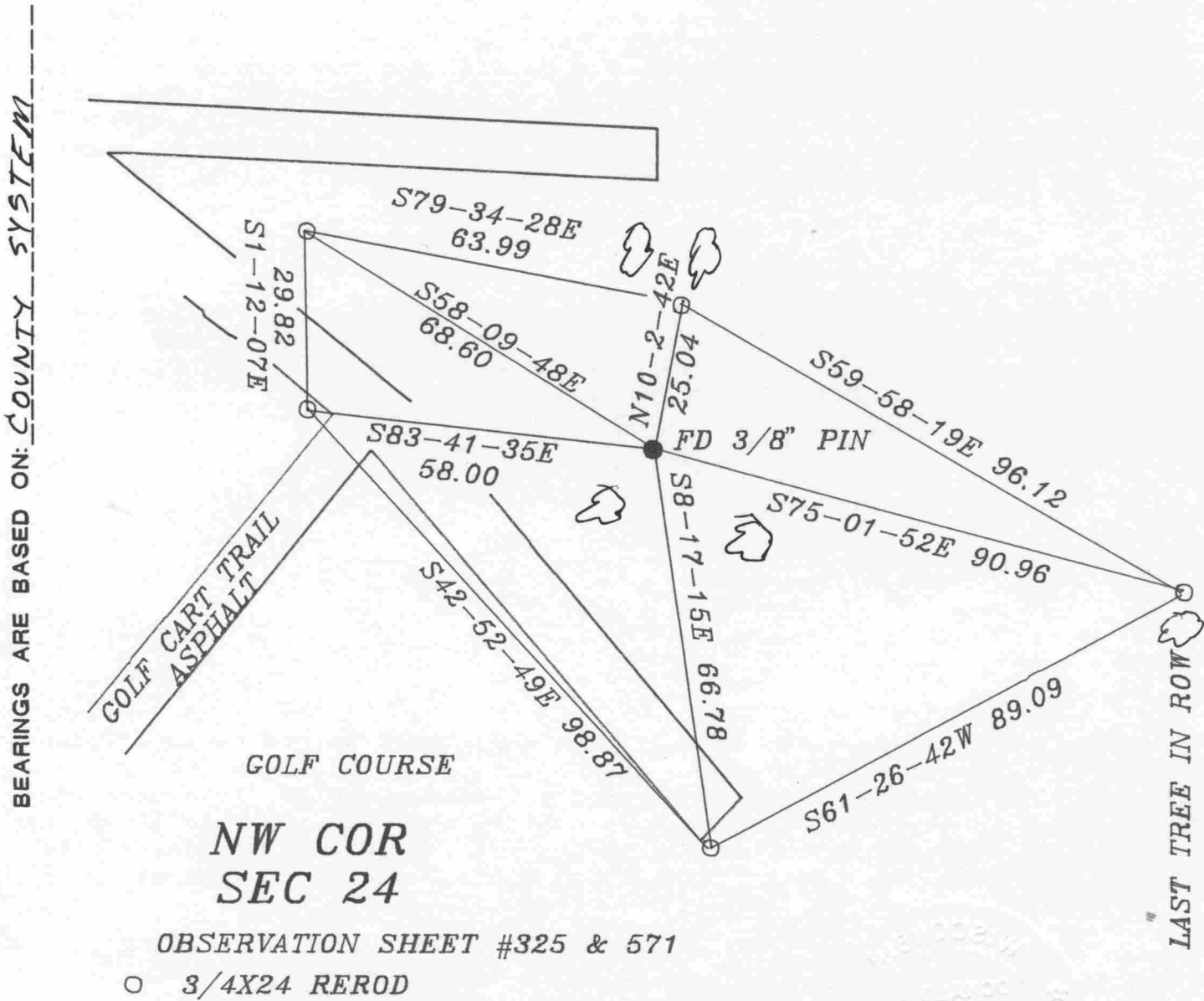
GPS (X) _____ TRAVERSE (X) _____

BASED ON THE FOLLOWING CONTROL:

PLACE MONUMENT SYMBOL  AT PROPER LOCATION ON ABOVE INDEX

 CORNER MONUMENT  WITNESS MONUMENT

(a)



FIELD BOOK _____ PAGE # _____

SHEET 1 OF 1

SHOW A PLAN VIEW DRAWING DEPICTING THE CORNER MONUMENT AND SURROUNDING PHYSICAL FEATURES, INCLUDING THE EXCAVATION AREA AND DEPTH.

PLANNING & ZONING COMMITTEE ADOPTED THE ABOVE FORM ON 12/2/1982

CORNER CODE N-21

BE571

(B) Describe any record evidence, monument evidence, occupational evidence, testimonial evidence or any other material evidence you considered, and whether the monument was found or placed.

1878 RUGER VOL 2 PG 239 2143.68 VAR 4-00 TO MEANDER POST TO THE WEST.

1956 BATTERMAN MAP #3495 FOUND PIN BY LIMESTONE.

1964 LEE MAP #382 FOUND PIN

1966 LEE CSM V1 PG 126 CONNECTED TO SURVEY

1971 BATTERMAN CSM V2 PG 188 FOUND PIN

1972 LEE CSM V2 PG 304 CONNECTED TO SURVEY

1993 JOHNS MAP #10202 FOUND 3/8" REBAR

1993 JOHNS MAP #10203 FOUND 3/8" IRON PIN

FOUND 3/8" IRON PIN

C) Was the corner restored through acceptance of (1) an obliterated evidence location, or, (2) a found perpetuated location?

ACCEPTED FOUND PERPETUATED LOCATION

D) Describe any material discrepancy between the location of the corner as restored or reestablished and the location of that corner as previously restored or reestablished by distance and direction. Show the discrepancy on the plan view drawing under (a), above. Show the distances between the corner as previously restored or reestablished and (1) the corner as restored or reestablished, and (2) to at least 4 of the witness monuments shown on the drawing in (a), above.

(E) Was the corner reestablished through lost corner proportionate methods? If so, show the method, including the directions and distances to other public land survey corners used as evidence or used for proportioning the corner location.

NO

I, Donald Barnes, hereby certify that the corner points as identified by the corner code index were, in a field survey on, MAY 9, 1998, established, re-established, monumented, re-monumented, recovered or restored as expressed below and in conformance with the regulations and rules as required in the current manual of survey instructions of the United States Department of Interior, Bureau of Land Management.

Donald Barnes
1/20/98

COUNTY SURVEYOR FILING DATA

Date of computer entry _____

Date microfilmed _____

Number of included sheets 1

CORNER CODE

EMBOSS LAND SURVEYOR SEAL

A-E 7.08 REQUIREMENT

N-21