

U.S. PUBLIC LAND SURVEY MONUMENT RECORD

For Public Land Survey Corners in:

WI ADMINISTRATIVE CODE A-E 7.08 REQUIREMENT

T. 1 N., R. 12 E 4th P.M.

BELOIT TWP TWP

CORNER CODE INDEX

ROCK COUNTY, WI

IF AVAILABLE
ROCK COUNTY COORDINATES PREFERRED

A	1	2	3	4	5	6	7	8	9	10	11	12	13	14	15	16	17	18	19	20	21	22	23	24	25
B	6																								
C																									
D																									
E																									
F	7	8	9	10	11	12																			
G																									
H																									
J																									
K	18	17	16	15	14	13																			
L																									
M																									
N																									
O	19	20	21	22	23	24																			
P																									
Q																									
R																									
S	30	29	28	27	26	25																			
T																									
U																									
V																									
W																									
X	31	32	33	34	35	36																			
Y																									
Z																									

North _____ Elev. _____

East _____

Hor. Datum _____ Vert. Datum _____

LATITUDE _____ ELLIPS. HT. _____

LONGITUDE _____

ELLIPS. DATUM
NAD83(91) _____ COUNTY _____ LIST _____

GPS (X) _____ TRAVERSE (X) _____

BASED ON THE FOLLOWING CONTROL:

PLACE MONUMENT SYMBOL  AT PROPER LOCATION ON ABOVE INDEX

 CORNER MONUMENT

WITNESS MONUMENT

(a)

BEARINGS ARE BASED ON: _____

FIELD BOOK _____ PAGE # _____

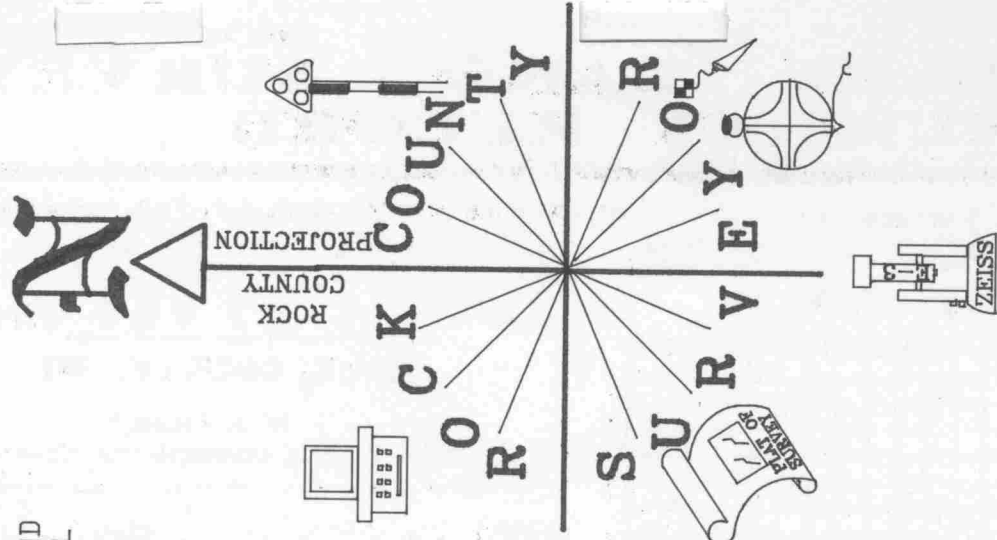
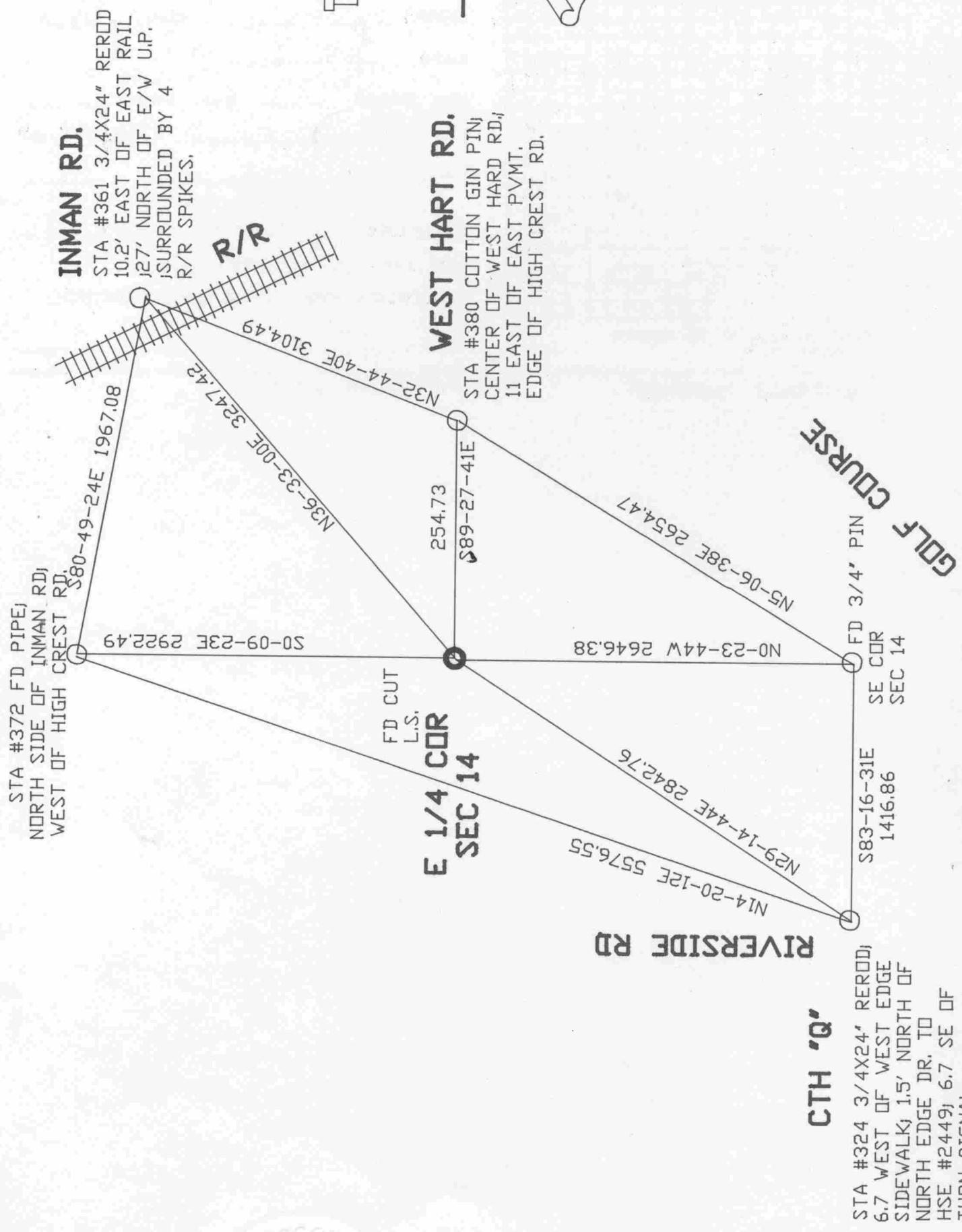
SHEET 2 OF 2

SHOW A PLAN VIEW DRAWING DEPICTING THE CORNER MONUMENT AND SURROUNDING PHYSICAL FEATURES, INCLUDING THE EXCAVATION AREA AND DEPTH.

PLANNING & ZONING COMMITTEE ADOPTED THE ABOVE FORM ON 12/2/1982

CORNER CODE L-2521

Donald Barnes
Oct 9, 1998



1-21

BE559

(B) Describe any record evidence, monument evidence, occupational evidence, testimonial evidence or any other material evidence you considered, and whether the monument was found or placed.

- 1834 LYONS NORTH BETWEEN SECTIONS 13 & 14
1518 LEFT PRAIRIE & ENTERED TIMBER
2640 SET QUARTER SECTION POST & LEFT TIMBER
{B. OAK 5 S82E 20.46'; B. OAK 9 N75 1/2W 112.2'
5280 SET POST CORNER TO SECTIONS 11,12,13,14
& MADE MOUND OF EARTH & SOD 4' FEET SQUARE & 2 1/2 FEET HIGH.
LAND ROLLING & FIRST RATE THE FIRST 1518' ON THE FIRST ? IS
PRAIRIE. THE LAST 1122 THINLY TIMBERED WITH WHITE & BLACK OAK
UNDER GROWTH GAPS.
- 1878 RUGER VOL 2 PG 239 FD STAKE ALSO FD NW BT & STUMP OF SE BT 2650.64
TO NE COR SEC 14.
- 1933 BATTERMAN MAP 328 FOUND LIMESTONE SURROUNDED BY 4 HARDHEADS.
1948 SHIMEALL SUBDIVISION PLAT BK 15 PG 13 FOUND STONE
1954 BATTERMAN SUBDIVISION PLAT BK 16 PG 24 FOUND STONE
1955 BATTERMAN MAP #327 FOUND STONE.
1956 BATTERMAN SUBDIVISION PLAT BK 18 PG 17 FOUND 6X6 STONE
1957 BATTERMAN MAP 373 FOUND MONUMENT BUT STATES NOTHING ABOUT IT.
1960 BATTERMAN CSM V1 PG 43 FOUND STONE
1964 BATTERMAN SUBDIVISION BK 22 PG 28 FOUND 6X6 STONE
1967 LEE SUBDIVISION BK 24 PG 2 FOUND STONE
1968 BATTERMAN CSM V1 PG 156 CONNECTED TO SURVEY
1970 SHARKEY CSM V1 PG 300 CONNECTED TO SURVEY
1983 COMBS CSM V11 PG 386 CONNECTED TO SURVEY
1990 LEE CSM V14 PG 250 FOUND CI
1994 KREBS SUBDIVISION BK 32 PG 240 FOUND CUT STONE 2649.76 TO NE COR
SEC 14

FOUND CUT LIMESTONE.

C) Was the corner restored through acceptance of (1) an obliterated evidence location, or, (2) a found perpetuated location?
ACCEPTED FOUND PERPETUATED LOCATION.

D) Describe any material discrepancy between the location of the corner as restored or reestablished and the location of that corner as previously restored or reestablished by distance and direction. Show the discrepancy on the plan view drawing under (a), above. Show the distances between the corner as previously restored or reestablished and (1) the corner as restored or reestablished, and (2) to at least 4 of the witness monuments shown on the drawing in (a), above.

(E) Was the corner reestablished through lost corner proportionate methods? If so, show the method, including the directions and distances to other public land survey corners used as evidence or used for proportioning the corner location.
NO

I, Donald Barnes, hereby certify that the corner points as identified by the corner code index were, in a field survey on, established, re-established, monumented, re-monumented, recovered or restored as expressed below and in conformance with the regulations and rules as required in the current manual of survey instructions of the United States Department of Interior, Bureau of Land Management.

COUNTY SURVEYOR FILING DATA

seal

Donald Barnes
Oct 9 1998

Date of computer entry _____

Date microfilmed _____

Number of included sheets _____

CORNER CODE

EMBOSS LAND SURVEYOR SEAL A-E 7.08 REQUIREMENT

L-21