

U.S. PUBLIC LAND SURVEY MONUMENT RECORD

For Public Land Survey Corners in:

WI ADMINISTRATIVE CODE A-E 7.08 REQUIREMENT

T. 1 N., R. 12 E

CORNER CODE INDEX

A	1	2	3	4	5	6	7	8	9	10	11	12	13	14	15	16	17	18	19	20	21	22	23	24	25
B	6																								
C		5																							
D			4																						
E				3																					
F					2																				
G						1																			
H	7	8	9	10	11	12																			
I																									
J																									
K																									
L	18	17	16	15	14	13																			
M																									
N																									
O																									
P	19	20	21	22	23	24																			
Q																									
R																									
S	30	29	28	27	26	25																			
T																									
U																									
V																									
W																									
X	31	32	33	34	35	36																			
Y																									
Z																									

BELOIT TWP
ROCK COUNTY WI

IF AVAILABLE
ROCK COUNTY COORDINATES PREFERRED

North 222,194.67 Elev. _____

East 491,054.10

Hor. Datum Country Vert. Datum _____

LATITUDE _____ ELLIPS. HT. _____

LONGITUDE _____

GPS (X) _____ TRAVERSE (X) _____

BASED ON THE FOLLOWING CONTROL:

PLACE MONUMENT SYMBOL  AT PROPER LOCATION ON ABOVE INDEX

 CORNER MONUMENT

WITNESS MONUMENT

(a)

BEARINGS ARE BASED ON:

FIELD BOOK _____ PAGE # _____

SHEET 1 OF 3

SHOW A PLAN VIEW DRAWING DEPICTING THE CORNER MONUMENT AND SURROUNDING PHYSICAL FEATURES, INCLUDING THE EXCAVATION AREA AND DEPTH.

PLANNING & ZONING COMMITTEE ADOPTED THE ABOVE FORM ON 12/2/1982

CORNER CODE J-21

BE551

(B) Describe any record evidence, monument evidence, occupational evidence, testimonial evidence or any other material evidence you considered, and whether the monument was found or placed.

- 1836 LYON NORTH BETWEEN SECTIONS 13 & 14
1518 LEFT PRAIRIE & ENTERED TIMBER
2640 SET QUARTER SECTION POST & LEFT ?
 B. OAK 5S82E 31
 B. OAK 9 N75 1/2W 170
- 5280 SET POST CORNER TO SECTIONS 11,12,13,&14 & MADE MOUND OF EARTH & SOD 4' SQUARE 2 1/2 FEET HIGH LAND ROLLING & FIRST RATE. THE FIRST 23 CHAINS ON THE FIRST ? IS PRAIRIE THE LAST 17 CHAINS THINLY TIMBER AND WITH WHITE & BLACK OAK UNDER GROWTH GR??
 EAST BETWEEN SECTIONS 12 & 13
- 1617 TO AN INDIAN TRAIL N & S
5311.68 INTERSECTED RANGE LINE 7.26' NORTH OF POST. LAND LEVEL & FIRST RATE.
 WEST CORRECTED BETWEEN SECTIONS 1 & 12
- 2655.84 SET QUARTER SECTION POST & MADE MOUND OF EARTH & SOD 4 FEET SQUARE & 2 1/2 FEET HIGH
5311.68 SECTION CORNER.
 WEST TRUE LINE BETWEEN SECTIONS 11 & 14
- 1650 LEFT PRAIRIE
2112 ENTERED ROCK RIVER BOTTOM
2277 INDIAN TRAIL N & S
2408.34 TO ROCK RIVER CRS S.S.E & SET POST ON LEFT BANK CORNER TO SEC 11 & 14.
 BTS WHITE OAK 22 S71E 95
 WHITE OAK 22 N57 1/2E 76
- 3076.26 POST ON RIGHT BANK OF ROCK RIVER. FIRST 25 CHAINS LEVEL PRAIRIE 7 FIRST RATE LAND. LAST 11 CHAINS ROLLING & 2ND RATE TIMBER.
 NORTH BETWEEN 11 & 12
- 2640 SET QUARTER SECTION POST & MADE MOUND OF EARTH & SOD
4620 LEFT PRAIRIE & ENTERED SCATTERING TIMBER
5280 SET POST & MADE MOUND CORNER TO SECTIONS 1,2, 11 & 12.
- 1878 RUGER VOL 2 PG 239 2650.64 TO W 1/4 COR SEC 13, 2408.34 WEST TO MEANDER POST, 2650.64 TO W 1/4 COR SEC 12.
- 1907 KERCH VOL 3 PG 45 112.4 NORTH OF GAS PIPE,706.6 SOUTH OF GAS PIPE,1762.2 SOUTH OF STAKE & STUMPS OF BT, 2649.8 NORTH OF W 1/4 COR SEC 13 (SAND STONE),
- 1956 SHIMEALL SUBDIVISION PLAT BK 17 PG 33 CALLS FOR 2" PIPE
1957 JENSEN SUBDIVISION PLAT BK 19 PG 3 CONNECTED TO PLAT
1958 " " BK 19 PG 26 "
1959 " BK 19 PG 35
1960 " BK 20 PG 20
1964 " BK 22 PG 23
1966 " BK 23 PG 23
1969 " BK 25 PG 25
- 1994 KREBS SUBDIVISION PLAT BK 32 PG 240 2649.76 TO E 1/4 COR SEC 14
1970 JENSEN CSM V1 PG 272 CONNECTED TO SURVEY TO CORNER.

FOUND 2" PIPE 1.8' DEEP & 7.8' NORTH OF HOUSE #747. THIS IS IN HARMONY WITH CALL DISTANCES TO W 1/4 COR SEC 12 & W 1/4 COR SEC 13.

C) Was the corner restored through acceptance of (1) an obliterated evidence location, or, (2) a found perpetuated location?
ACCEPTED FOUND PERPETUATED LOCATION.

Donald Barnes
2/4/98

J-21

D) Describe any material discrepancy between the location of the corner as restored or reestablished and the location of that corner as previously restored or reestablished by distance and direction. Show the discrepancy on the plan view drawing under (a), above. Show the distances between the corner as previously restored or reestablished and (1) the corner as restored or reestablished, and (2) to at least 4 of the witness monuments shown on the drawing in (a), above.

NONE.

(E) Was the corner reestablished through lost corner proportionate methods? If so, show the method, including the directions and distances to other public land survey corners used as evidence or used for proportioning the corner location.

NO

I, Donald Barnes, hereby certify that the corner points as identified by the corner code index were, in a field survey on, MAY 22, 1997, established, re-established, monumented, re-monumented, recovered or restored as expressed below and in conformance with the regulations and rules as required in the current manual of survey instructions of the United States Department of Interior, Bureau of Land Management.

COUNTY SURVEYOR FILING DATA

seal

Date of computer entry _____

Date microfilmed _____

Number of included sheets _____

CORNER CODE

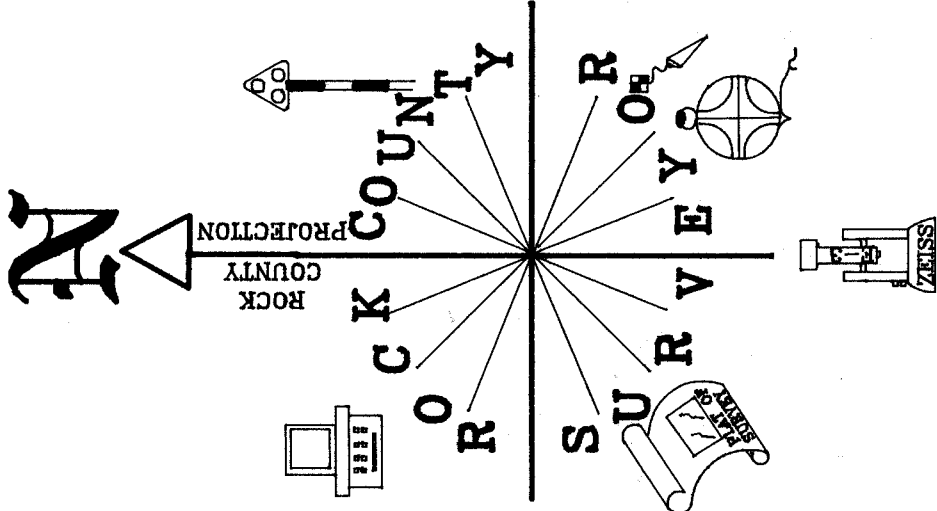
Donald Barnes

EMBOSS LAND SURVEYOR SEAL

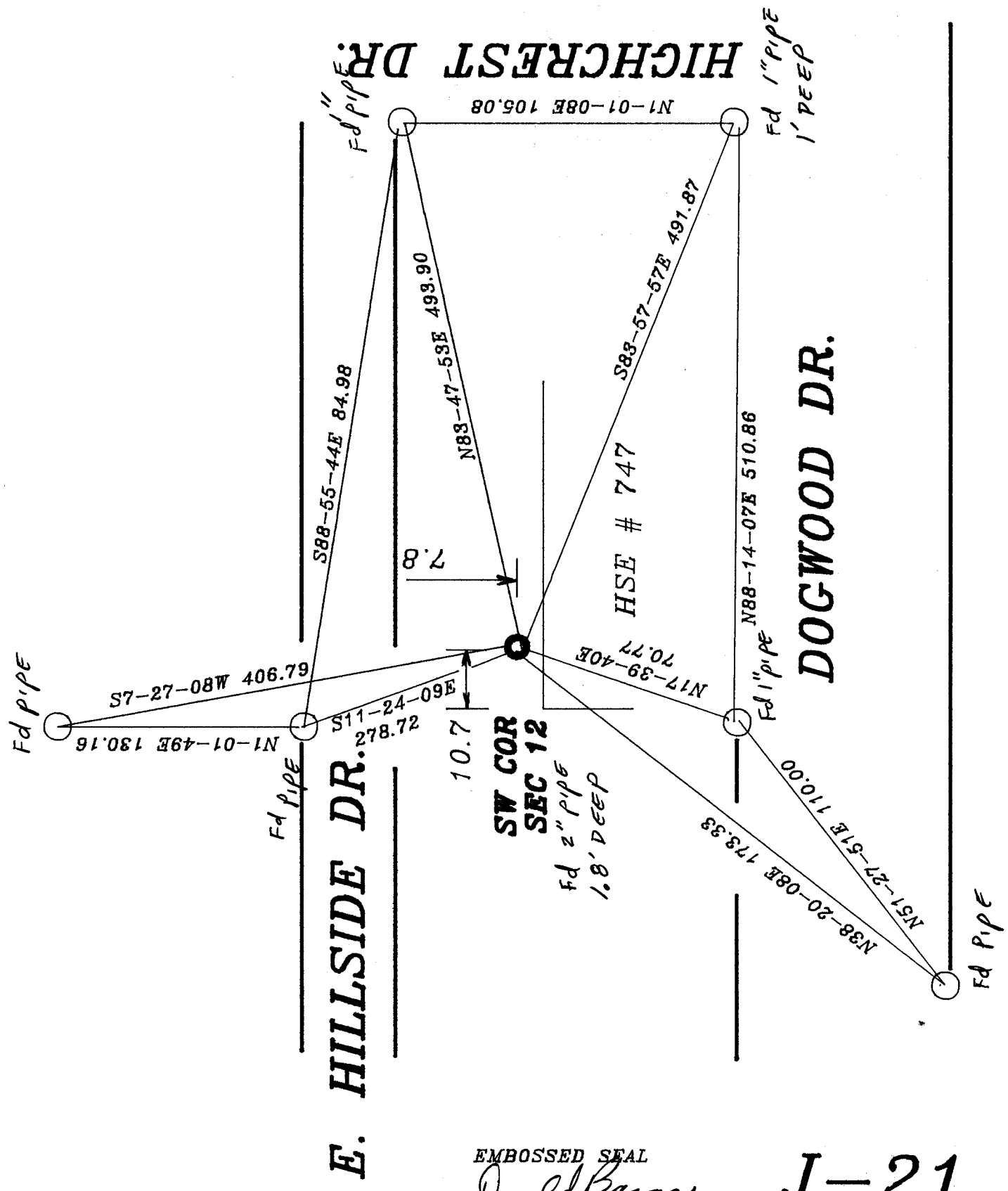
A-E 7.08 REQUIREMENT

2/A 198

5-21



OBSERVATION SHEET #133,369, & 372



EMBOSSSED SEAL
 Donald Barnes
 2/4/98

J-21