

U.S. PUBLIC LAND SURVEY MONUMENT RECORD

For Public Land Survey Corners in:

WI ADMINISTRATIVE CODE A-E 7.08 REQUIREMENT

T. 1N., R. 12E

CORNER CODE INDEX

A	1	2	3	4	5	6	7	8	9	10	11	12	13	14	15	16	17	18	19	20	21	22	23	24	25
B	6																								
C		5																							
D			4																						
E				3																					
F					2																				
G	1																								
H		8																							
I			9																						
J				10																					
K					11																				
L	18																								
M		17																							
N			16																						
O				15																					
P					14																				
Q	19																								
R		20																							
S			21																						
T				22																					
U					23																				
V						24																			
W							25																		
X								26																	
Y									27																
Z										28															
											29														
												30													
													31												
														32											
															33										
																34									
																	35								
																		36							

BELOIT TWP

ROCK COUNTY WI

IF AVAILABLE
ROCK COUNTY COORDINATES PREFERRED

North 227,498.73 Elev. _____

East 488,533.28

Hor. Datum _____ Vert. Datum _____

LATITUDE _____ ELLIPS. HT. _____

LONGITUDE _____

GPS (X) _____ TRAVERSE (X) _____

BASED ON THE FOLLOWING CONTROL:

PLACE MONUMENT SYMBOL AT PROPER LOCATION ON ABOVE INDEX

CORNER MONUMENT

WITNESS MONUMENT

(a)

BEARINGS ARE BASED ON: _____

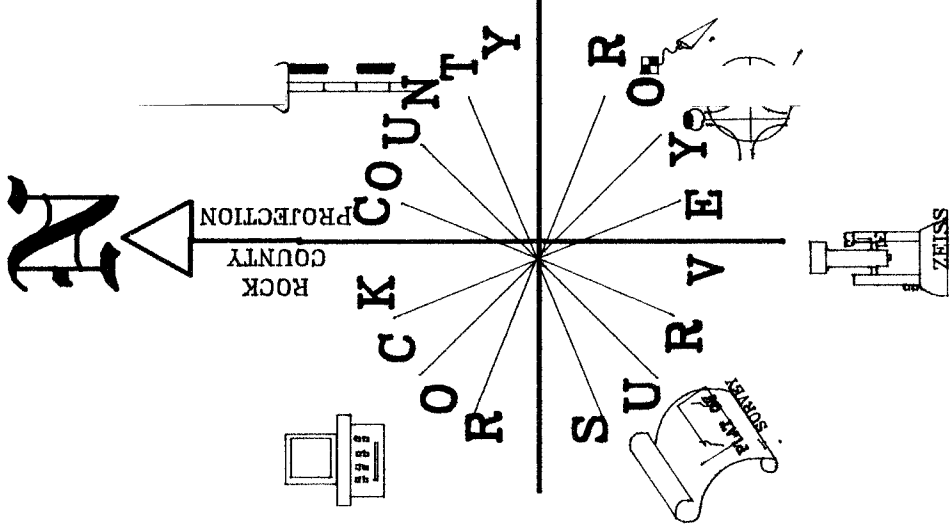
FIELD BOOK _____ PAGE # _____

SHEET 1 OF 2

SHOW A PLAN VIEW DRAWING DEPICTING THE CORNER MONUMENT AND SURROUNDING PHYSICAL FEATURES, INCLUDING THE EXCAVATION AREA AND DEPTH.

PLANNING & ZONING COMMITTEE ADOPTED THE ABOVE FORM ON 12/2/1982

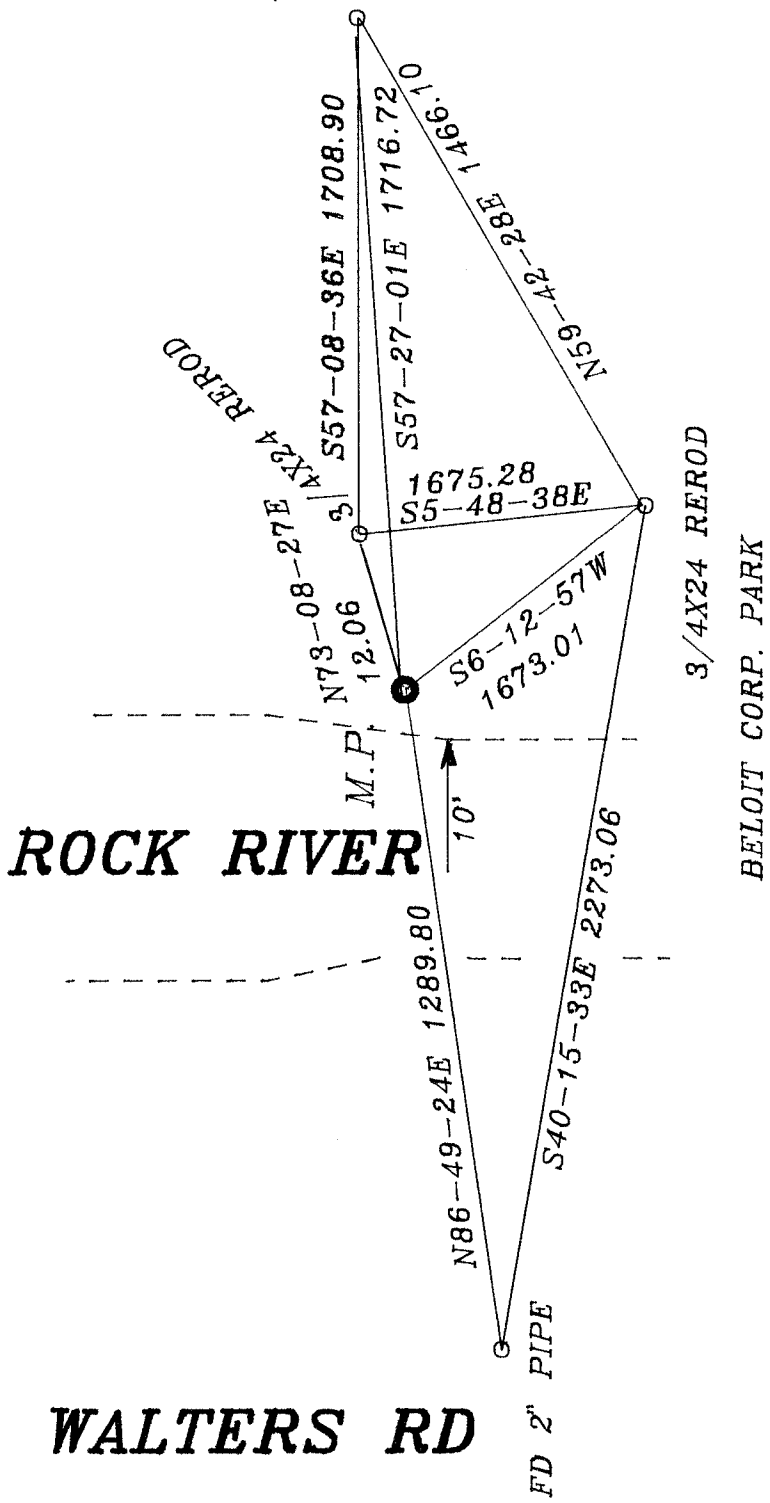
CORNER CODE E 19/20



10.5' NORTH OF
E/W FENCE; 8'
WEST OF WEST EDGE
PAVEMENT

3/4X24 REROD

STH 51



OBSERVATION SHEETS 304, 399, 395, & 400

EMBOSSSED SEAL

Donald Barnes
2/2/98

E-19/20

BE4094

(B) Describe any record evidence, monument evidence, occupational evidence, testimonial evidence or any other material evidence you considered, and whether the monument was found or placed.

1836 LYON WEST BETWEEN SECTIONS 2 & 11

2640 SET QUARTER SECTION POST

BUR OAK 20 N46E 266

BUR OAK 17 S11 1/4W 309

2758.8 TO ROCK RIVER CRS S.S.E.W SET POST ON LEFT BANK

BUR OAK 17 S14E 317

BUR OAK 20 N64E 410

3036 POST ON RIGHT BANK LAND DESCENDING WEST NEARLY LEVEL & 2ND RATE.

1878 RUGER VOL 2 PG 239 VAR 4-00 2640 TO NE COR SEC 11. FOUND REMAINS OF BOTH B.T.S STUMPS. THE SAME TREES WERE TAKEN FOR BOTH SECTION & MEANDER CORNS. THE DISTANCES & BEARINGS TO THE NE B.T JUST AGREE THE DISTANCE TO THE S.B.T. AGREE & AND THE BEARING FROM THE MEANDER CORNER AGREES, BUT THE BEARING FROM THE N 1/4 COR IS S17 1/4W INSTEAD OF S 11 1/4W

1946 BATTERMAN #261 SET PIPE & CALLS FOR 2566.22 TO NE COR SEC 11

ORIGINAL N 1/4 COR OF SEC 11 AND MEANDER CORNERS ARE NOW IN THE RIVER. FOUND 3/4" PIPE WITH FLAGGING IN HARMONY WITH BATTERMAN'S ANGLE AT THE NE COR SEC 11. THE PIPE IS 10 EAST OF THE EAST EDGE OF THE RIVER.

C) Was the corner restored through acceptance of (1) an obliterated evidence location, or, (2) a found perpetuated location?
ACCEPTED NEW MEANDER CORNER ESTABLISHED BY BATTERMAN.

D) Describe any material discrepancy between the location of the corner as restored or reestablished and the location of that corner as previously restored or reestablished by distance and direction. Show the discrepancy on the plan view drawing under (a), above. Show the distances between the corner as previously restored or reestablished and (1) the corner as restored or reestablished, and (2) to at least 4 of the witness monuments shown on the drawing in (a), above.

(E) Was the corner reestablished through lost corner proportionate methods? If so, show the method, including the directions and distances to other public land survey corners used as evidence or used for proportioning the corner location.

I, Donald Barnes, hereby certify that the corner location as identified by the corner code index was determined by me under my direction and control and that this U.S. Public Land Survey Monument Record is correct and complete to the best of my knowledge and belief.

seal

Donald Barnes

2/4/98

emboss

Number of included sheets _____

A-E 7.08 REQUIREMENT

CORNER CODE

E 19/20